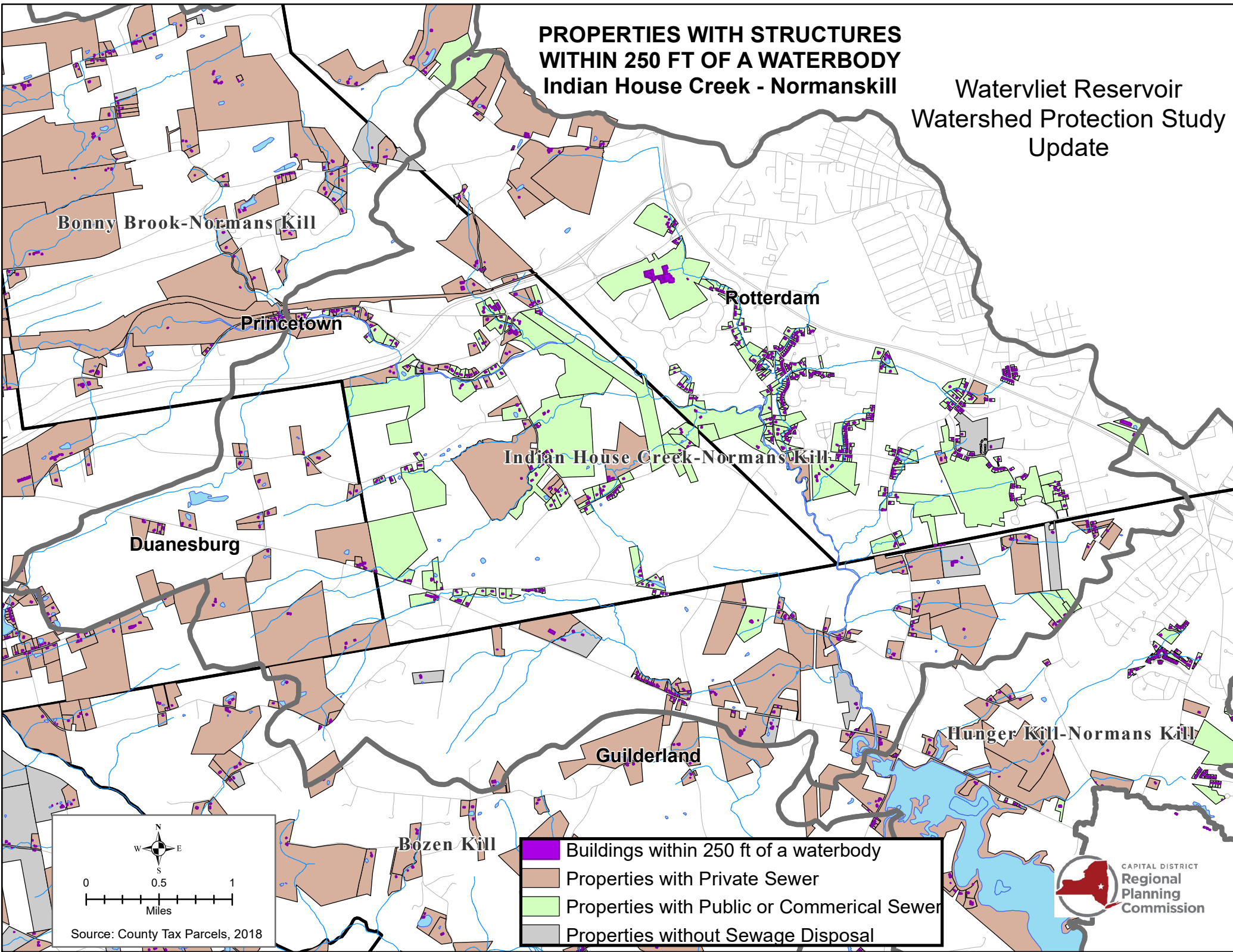






PROPERTIES WITH STRUCTURES WITHIN 250 FT OF A WATERBODY Indian House Creek - Normanskill

Watervliet Reservoir Watershed Protection Study Update



-  Buildings within 250 ft of a waterbody
-  Properties with Private Sewer
-  Properties with Public or Commerical Sewer
-  Properties without Sewage Disposal

0 0.5 1
Miles
Source: County Tax Parcels, 2018

