

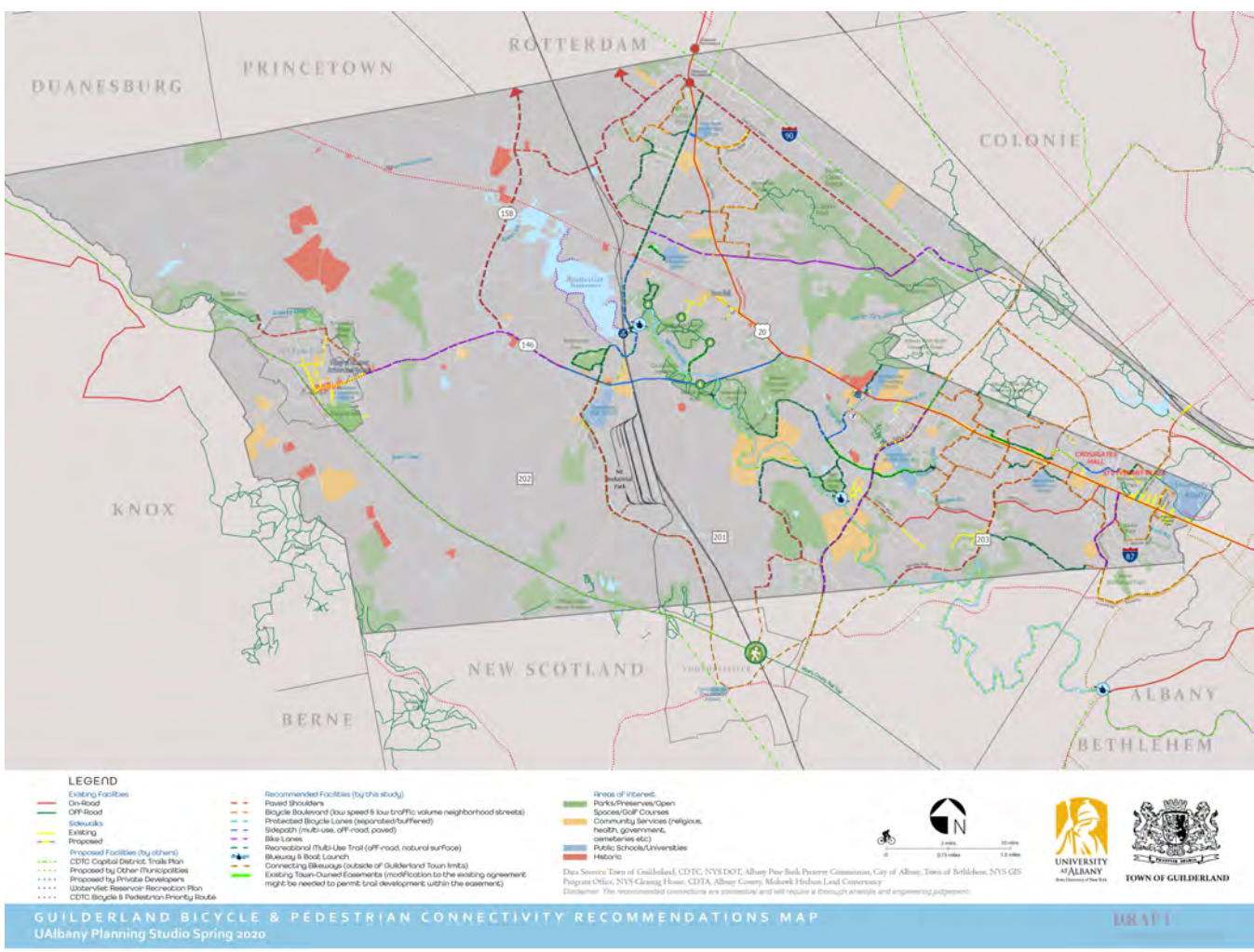
- Completed with Graduate planning students with Kate Maynard, AICP as Instructor.

COMMUNITY ENGAGEMENT



- Community Engagement including stakeholder interviews and well attended public meeting - This collective effort helped inspire this plan’s recommendations that will address the needs of the community.

CONNECTIVITY RECOMMENDATIONS



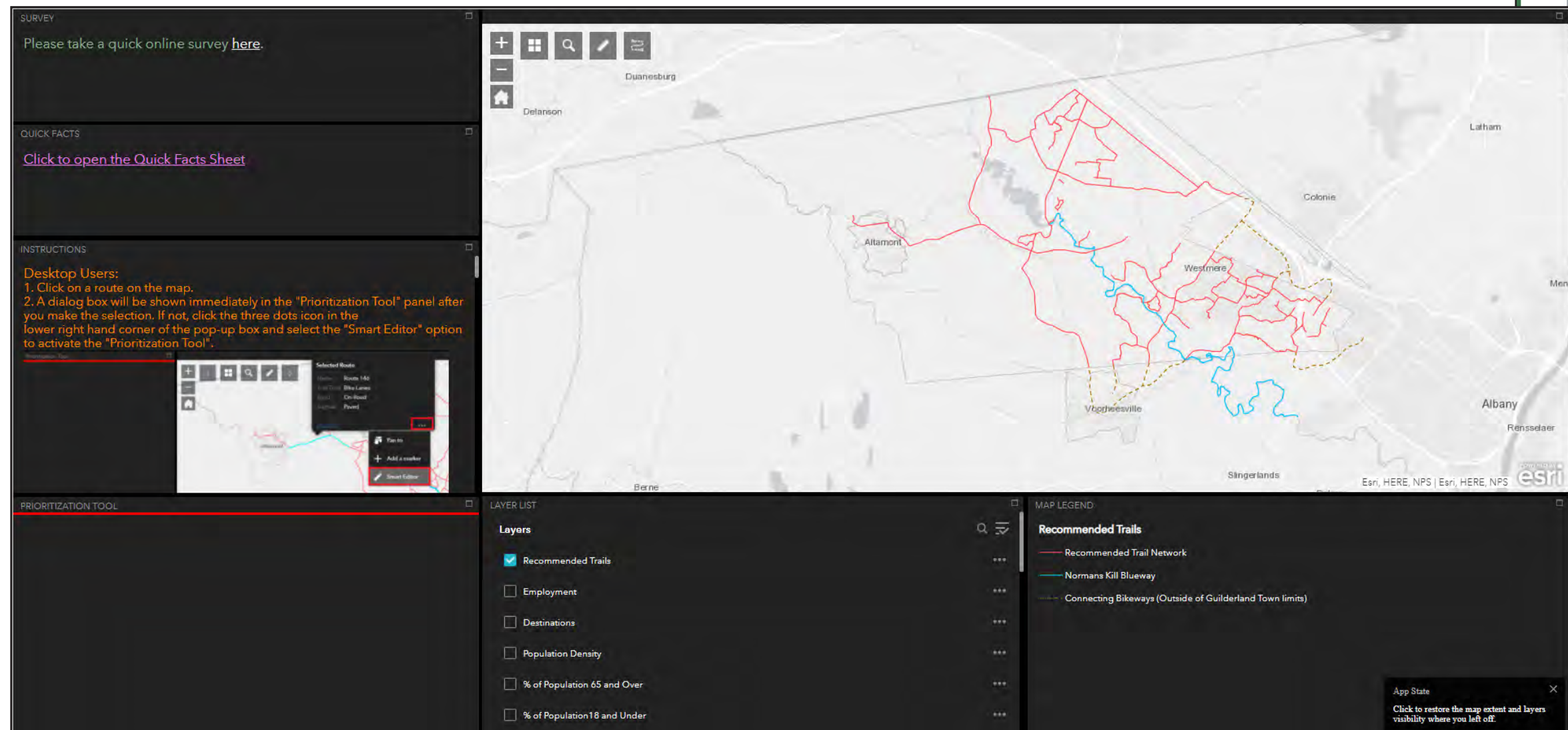
- Feedback from the community/stakeholder interviews,
- Recommendations from the past plans and studies,
- Proposed & planned trails and bikeways by a range of agencies, organizations, municipalities and private entities

FURTHER DEVELOPMENT OF THE DRAFT PLAN

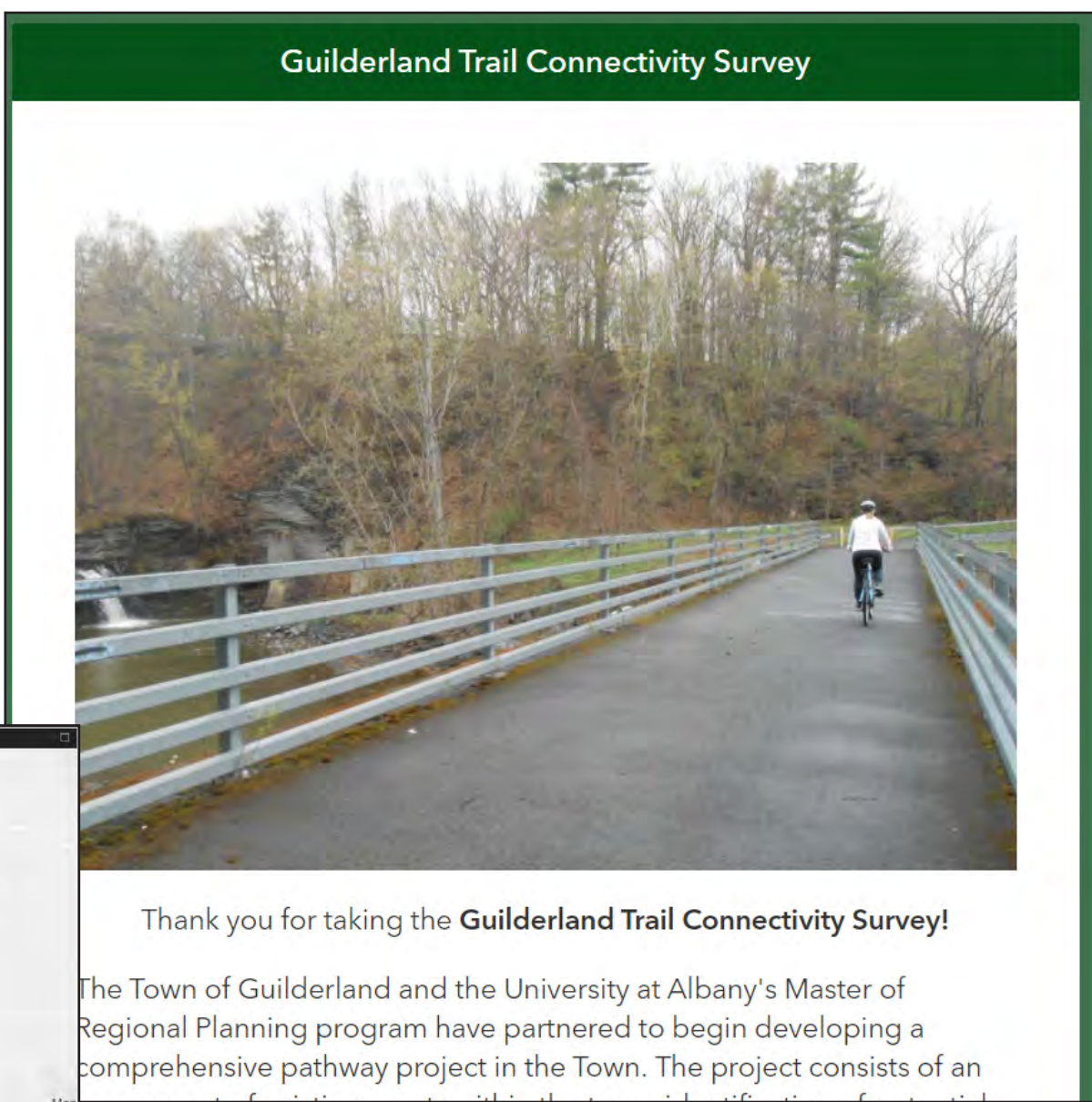
- The results of the public survey and prioritization tool
- Development of design guidelines
- Cost estimation of prioritized trail segments

PRIORITIZATION TOOL & PUBLIC SURVEY

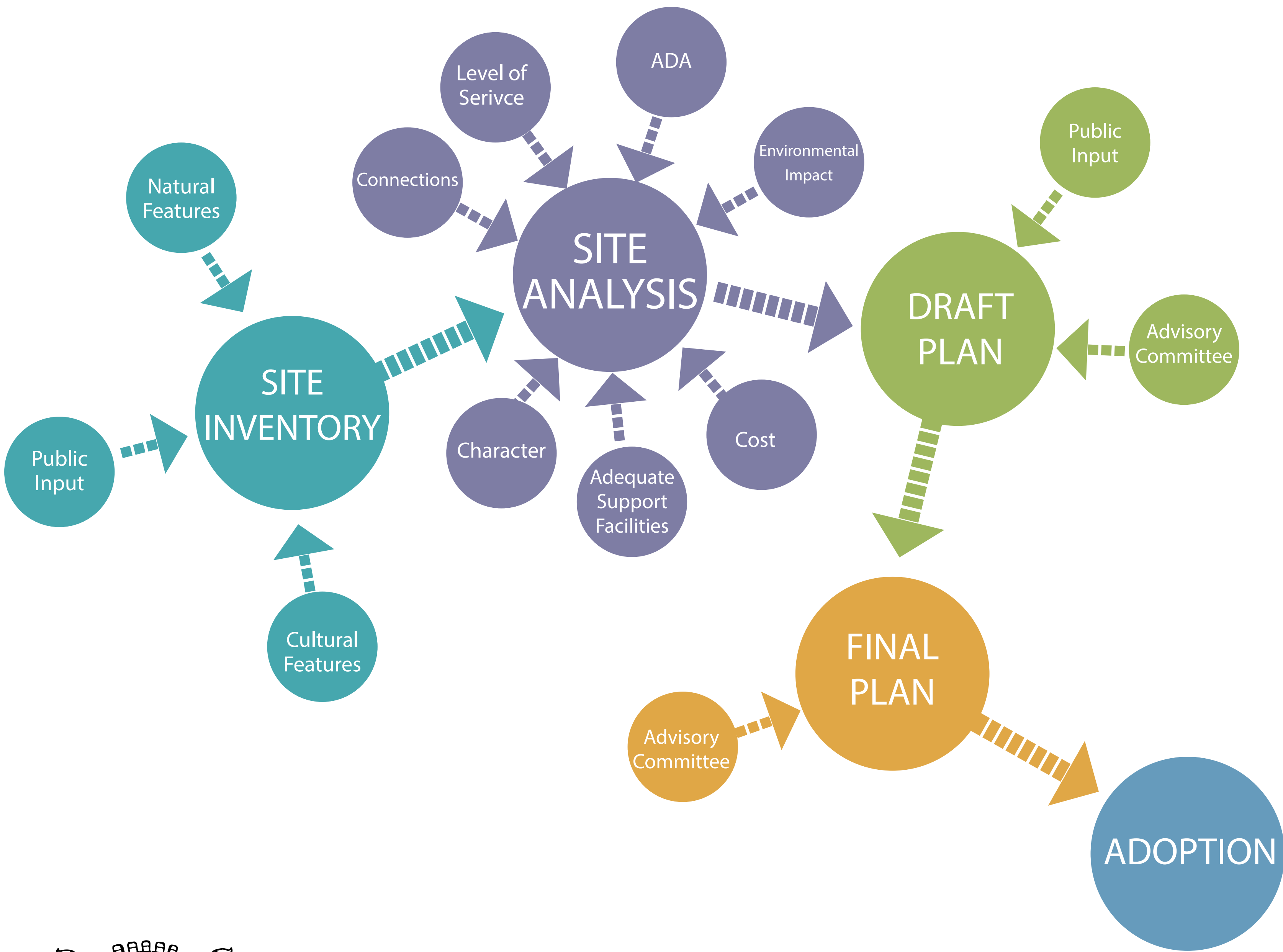
- The prioritization framework is a flexible approach, intended to provide clear direction for seeking project funds and completing design and engineering of the most critical projects, while still allowing for opportunistic implementation of the entire network



<https://cutt.ly/TOG-publicinput>



<https://cutt.ly/TOG-publicsurvey>



TOWN OF GUILDERLAND



# IDENTIFYING AREAS TO PRESERVE

- Protection of natural areas and wildlife habitat/corridors: sensitive environmental areas, wetlands, steep slopes, floodplains, water quality, scenic features
- Recreational opportunities: identify needs of local area, access to parcels, trail construction (low impact usages)
- Safe travel corridors: Ped/Bike, connections to link residential dense area to recreation (e.g. Crossgates Mall - Watervliet Reservoir)
- Usage of a good solid plan as a flexible tool to help in the identification of parcels

Protection/efficient use of natural resources are promoted in the Guilderland Town Code. Examples include but not limited to:

...

§ 280-35A(1) Reduce adverse impacts of growth on surface water and groundwater quality

§ 280-35A(2) Provide incentives for publicly accessible and open space resources and recreation lands

§ 280-35A(3) Protect contiguous open space areas and corridors

§ 280-35A(7) Protect important views, as well as steep slopes, hillsides, and ridges

§ 280-35A(8) Protect historic, archeological, and cultural features

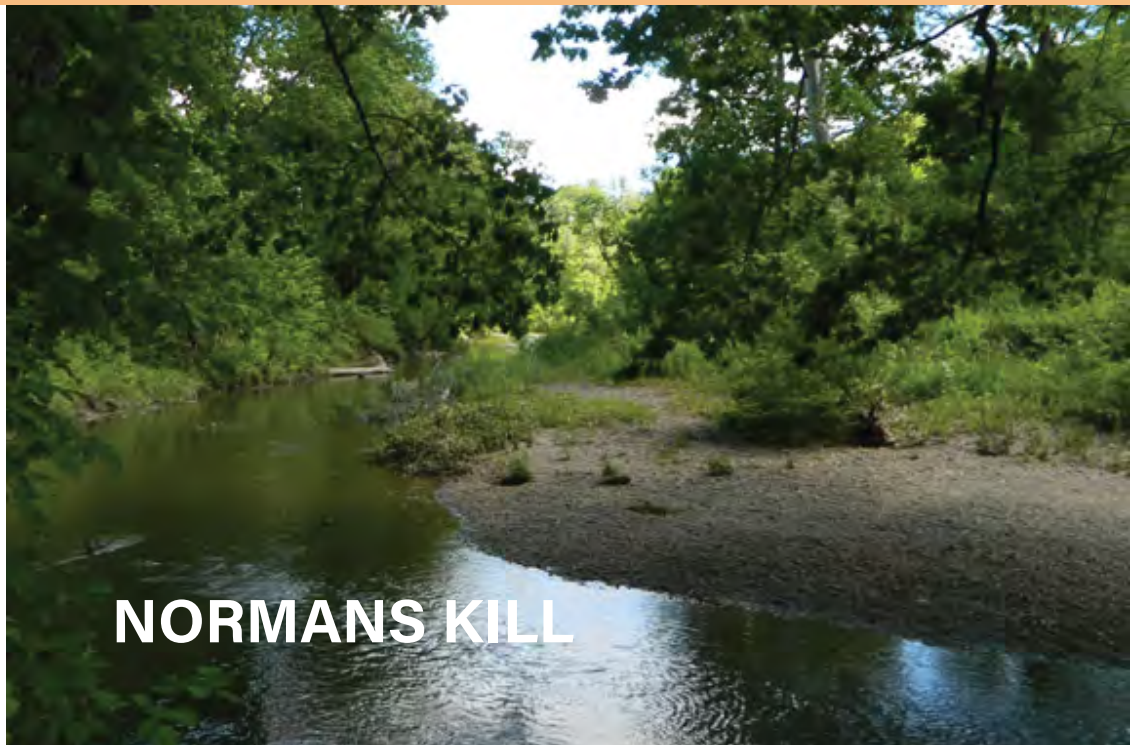
§ 280-35A(9) Protect valuable wildlife and habitat areas

...

## Importance of Trails and Corridor Conservation

- Trails as gateways: Wildlife viewing, physical exercise, destination connectors, fishing, boating, photography, hiking as a type of meditation, ever changing with each step
- Impossible to know the value of a trail until you have walked through wilderness without one. If given a cloudy day with no other cue or compass, a person will not travel the length of a football field without circling
- 85% of Native American trails have been paved

Source: "On Trails" by Robert Moor



NORMANS KILL



WATERVLIT RESERVOIR  
(primary public drinking water source for the Town)



WETLANDS



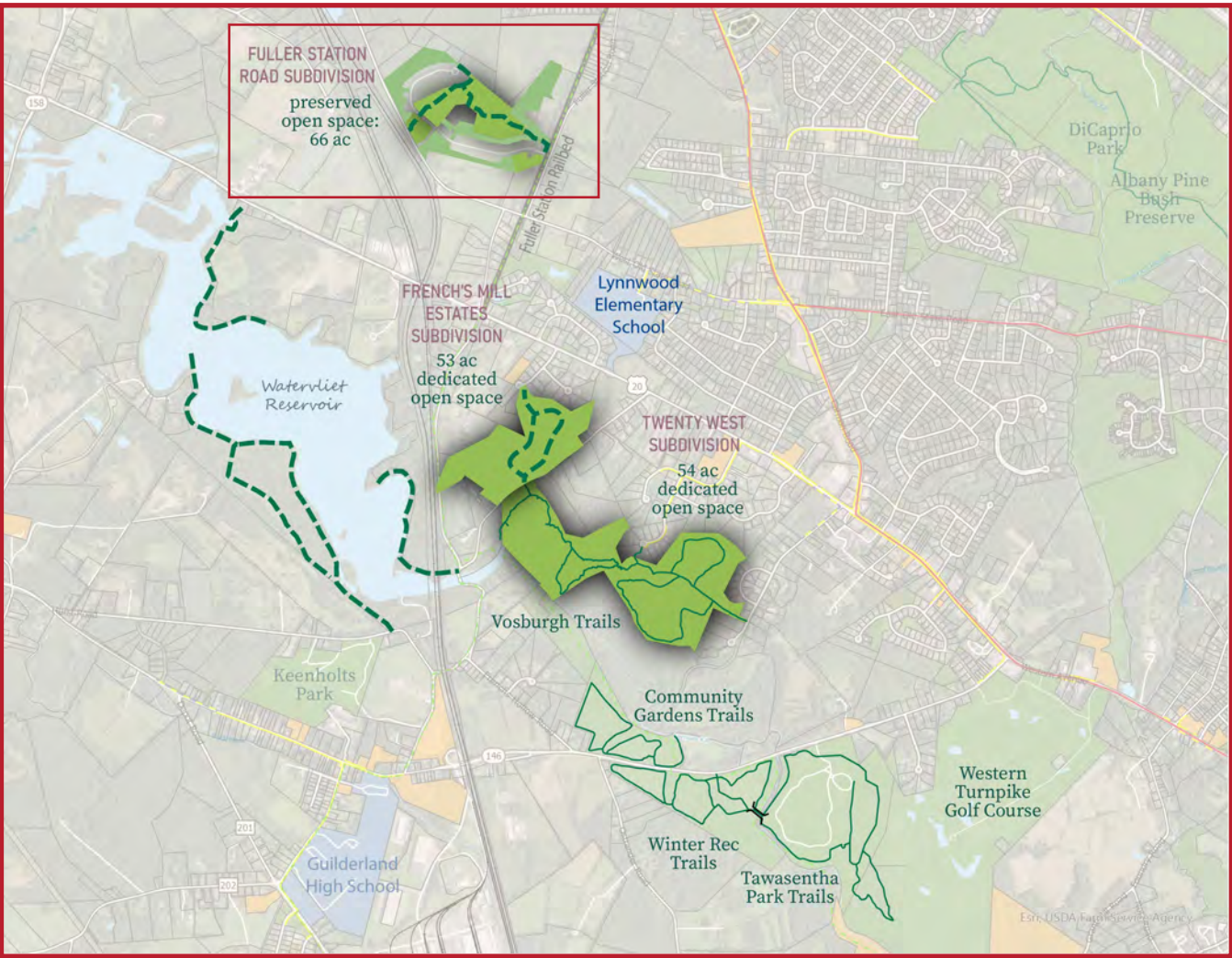
RARE HABITAT



# CURRENT CONSERVATION/TRAIL DEVELOPMENT EFFORTS

## FULLER STATION ROAD SUBDIVISION TRAIL DEVELOPMENT (proposed)

Fort Hunter Transportation Study Bicycle System recommendation:  
“Approximately three east west bicycle routes, one each through the northern, central and southern sections of the neighborhood.”

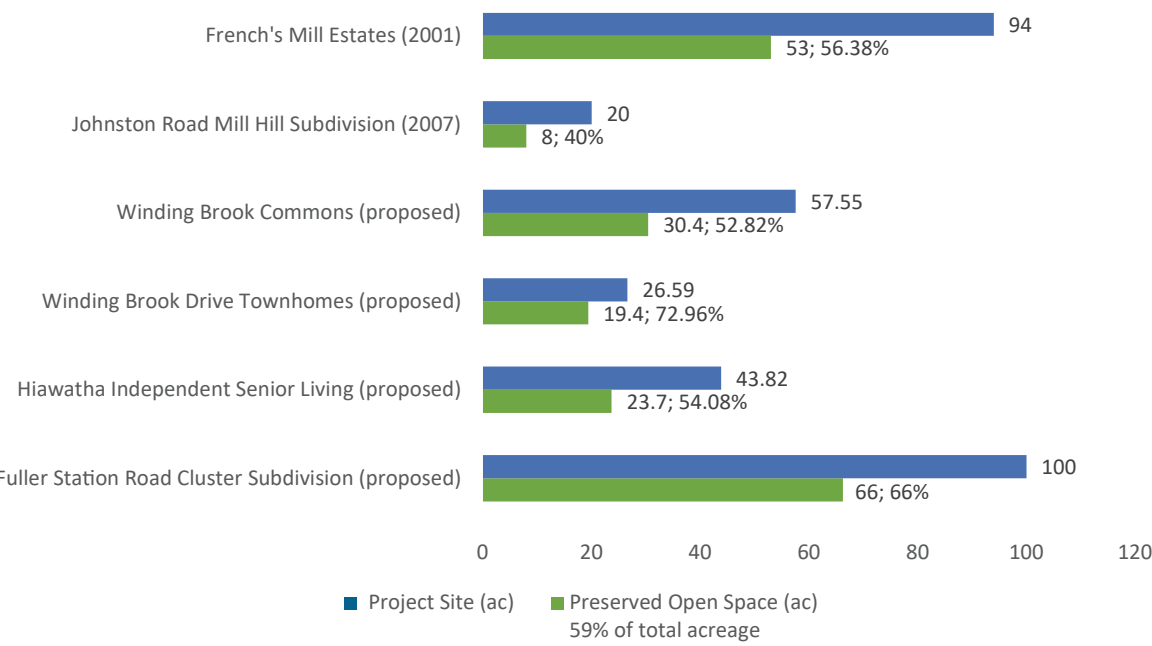


## WINDING BROOK DRIVE PROJECTS



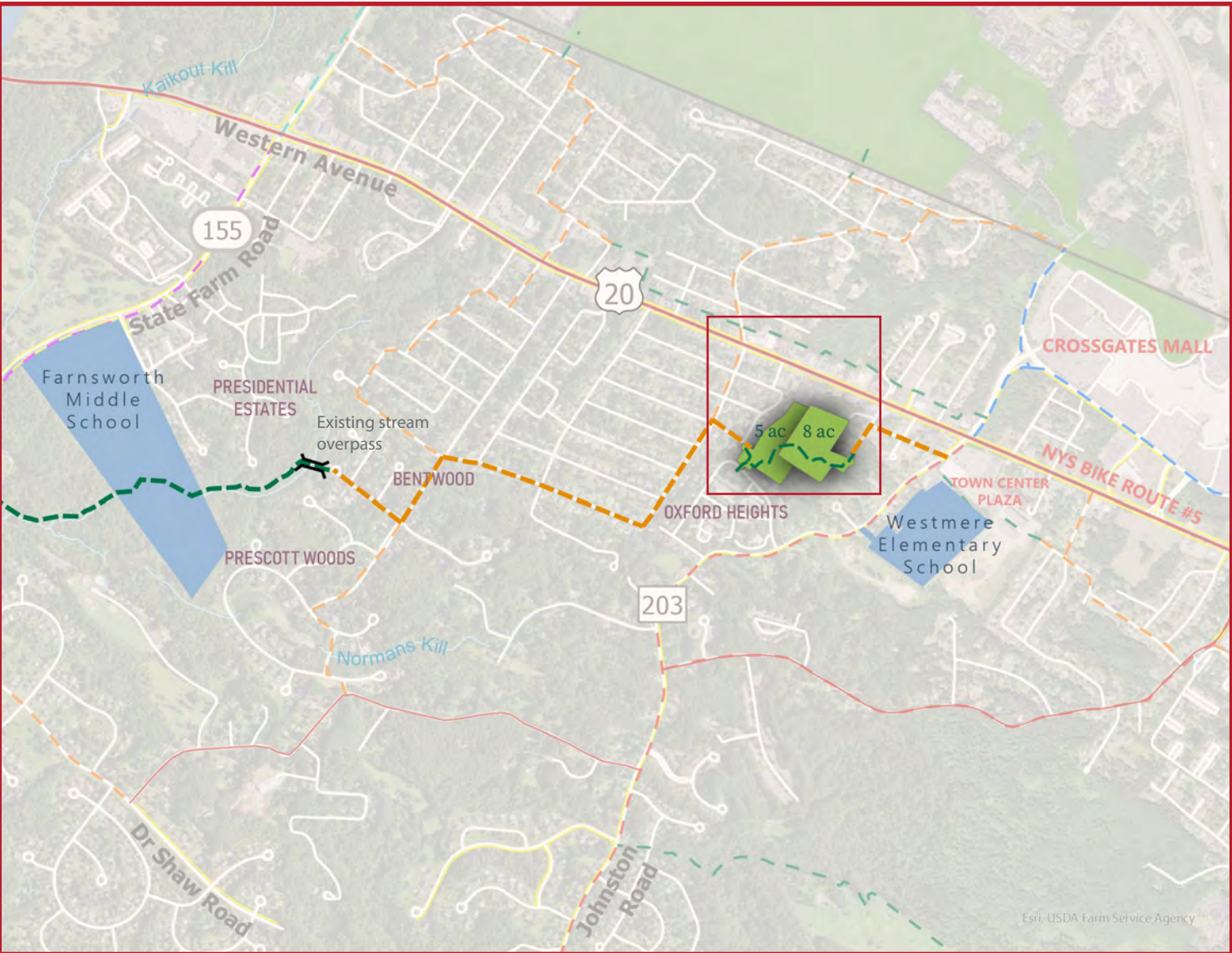
## WATERVLIET RESERVOIR RECREATION PLAN (proposed)

The Town is working with the City of Watervliet, and DEC on a recreation plan for the Watervliet Reservoir including non-motorized boat access and hiking links to the Vosburgh Trails area.



## VOSBURGH FUTURE LOOP (ongoing)

A loop trail is planned on the 53 acres Town-owned open space in the French's Mill Estates Subdivision. The loop trail would connect the existing Vosburgh Trail system and Lynnwood Elementary School as well as lay the groundwork to create a bike/ped connection to the Fort Hunter neighborhood.



## JOHNSTON ROAD MILL HILL TRAIL (ongoing)

This trail would connect Westmere Elementary School/Town Center Plaza/Crossgates Mall and Farnsworth Middle School and its surrounding neighborhoods while serving as a neighborhood resting area with benches and picnic tables in the busiest part of the Town.

## Town’s Growth management tools to encourage trail connectivity & public access to open spaces/conservation areas:

### Guiderland Zoning Code Sections:

§ 280-14D(10) of Town Code states that a CH District shall include a publicly accessible trail network and/or sidewalks connecting the development to surrounding areas.

§ 280-35D(3)(c) of Town Code states that where the general public is granted access to conservation areas or there is a linking of open space or trail corridors through the site existing/proposed publically accessible trails or open space networks, the development may be awarded a ten-percent-unit count bonus.

§ 280-39E(4) of Town Code states that pedestrian walkways, marked crosswalks and multi-use paths should be used to connect buildings to one another, to parking areas, and to public streets and sidewalks.

§ 280-39E(4) of Town Code states that facilities for pedestrian and bicycle circulation within the site, and connection of such facilities to adjoining properties and facilities, are encouraged.

### Guiderland Subdivision Code Sections:

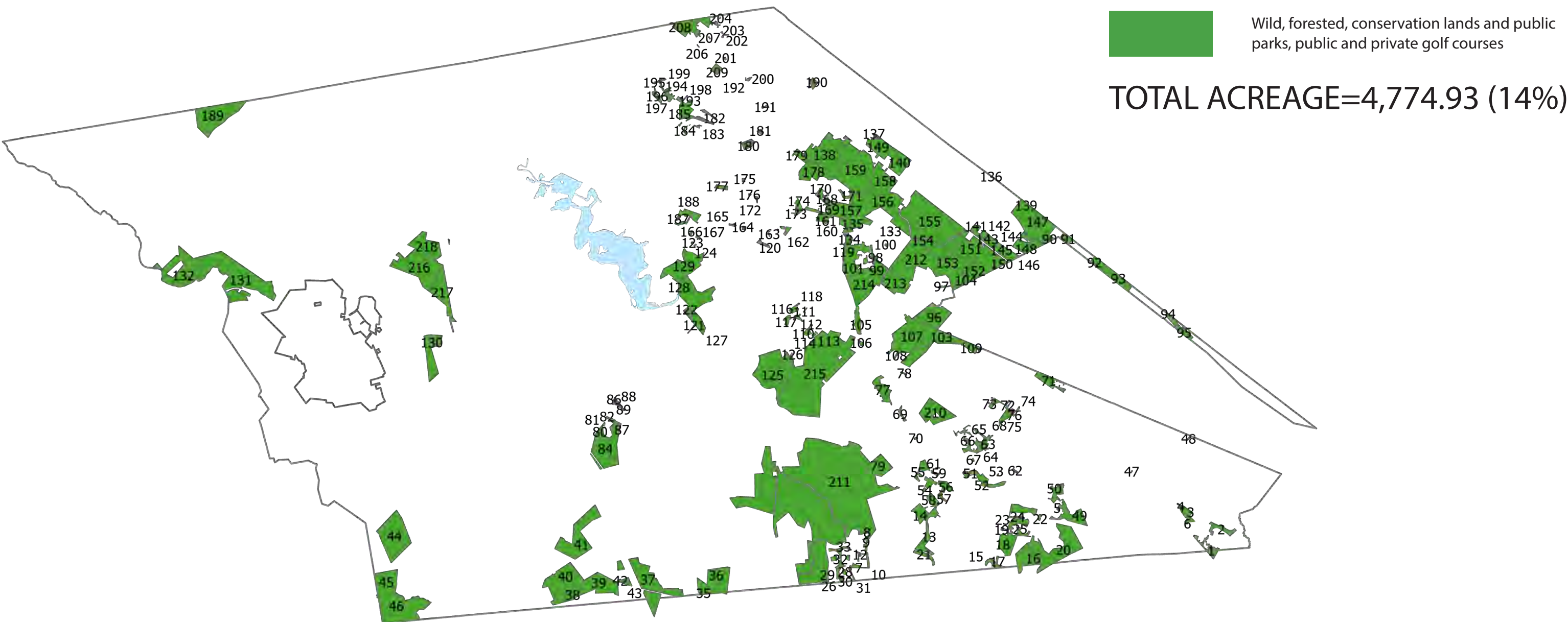
§ 247-25A(7) of Town Code promotes connecting neighboring developments by bicycle/pedestrian paths or greenways, in order to promote and support the objectives of the Town's bicycle path master plan, and provide safe nonmotorized access between the development and neighboring developments and possible future developments and parks, recreational sites and school playgrounds.

§ 247-25A(7) of Town Code states that lands comprising of at least 5% but not to exceed 10% of the total area to be subdivided shall be reserved for park purposes in a location with suitable public access.

**NEXT STEP...**  
**Rezoning of open spaces and parklands to Open Space (OS) Zoning District.**



REZONING PARKLANDS/OPEN SPACES TO OPEN SPACE (OS) ZONING DISTRICT




ID Number	PrintKey	OwnrName	PropC	Site Property_D	Acres	Zoningwith
1	63.12-7-31	Woodscape Homeowners	970	Other Wild Or Conservation Lands	11.48	TH
2	63.08-6-27	Woodscape Homeowners	970	Other Wild Or Conservation Lands	9.52	R15
3	63.07-2-1.2	Town of Guilderland	963	City/Town/Village Public Parks & Recreation Areas	7.2	OS
4	63.07-2-1.1	Strawberry Lane Community	970	Other Wild Or Conservation Lands	1.1	R15
5	63.05-1-11	Canterbury Park	970	Other Wild Or Conservation Lands	0.62	TH
6	63.00-2-2.5	Town of Guilderland	970	Other Wild Or Conservation Lands	2.7	RO30
7	62.09-2-19.2	Weatherfield Park II	970	Other Wild Or Conservation Lands	2.1	PUD
8	62.09-1-45	Weatherfield Park Phase I	970	Other Wild Or Conservation Lands	3.77	PUD
9	62.09-1-46	State of New York	970	Other Wild Or Conservation Lands	2.05	PUD
10	62.09-2-19.1	Chesterfield Homeowners	970	Other Wild Or Conservation Lands	2.72	PUD
11	62.09-2-9.2	Weatherfield Park II	970	Other Wild Or Conservation Lands	2.81	PUD
12	62.09-2-9.1	Chesterfield Homeowners	970	Other Wild Or Conservation Lands	0.49	PUD
13	62.06-1-87	Town of Guilderland	970	Other Wild Or Conservation Lands	20.8	R20
14	62.06-1-88	Town of Guilderland	970	Other Wild Or Conservation Lands	13.1	RA3
15	62.00-2-62	Gibson, David M	970	Other Wild Or Conservation Lands	4.9	R20
16	62.00-2-67	Moak, David B	971	Wetlands, Either Privately or Governmentally Owned	14.5	RA3
17	62.00-2-49.21	Town of Guilderland	970	Other Wild Or Conservation Lands	1.47	R20
18	62.00-2-113	Saddlebrook Of Guilderland	970	Other Wild Or Conservation Lands	51.9	RO40
19	62.00-2-115	Saddlebrook Of Guilderland	970	Other Wild Or Conservation Lands	1.63	RO40
20	62.00-2-66.1	Covington Woods	970	Other Wild Or Conservation Lands	98	RA3
21	62.00-1-50	Woodland By Mitchell Ltd	970	Other Wild Or Conservation Lands	5.7	R20
22	62.00-2-44.1	Saddlebrook Of Guilderland	970	Other Wild Or Conservation Lands	0.63	R20
23	62.00-2-117	Saddlebrook Of Guilderland	970	Other Wild Or Conservation Lands	1.31	RO40
24	62.00-2-114	Saddlebrook Of Guilderland	970	Other Wild Or Conservation Lands	0.88	RO40
25	62.00-2-116	Saddlebrook Of Guilderland	970	Other Wild Or Conservation Lands	1.3	RO40
26	61.16-1-67.1	Weatherfield Park III	970	Other Wild Or Conservation Lands	4.8	PUD
27	61.16-1-65	Weatherfield Park III	970	Other Wild Or Conservation Lands	0.2	PUD
28	61.16-1-66	Weatherfield Park III	970	Other Wild Or Conservation Lands	1.2	PUD
29	61.16-1-68	Weatherfield Park III	970	Other Wild Or Conservation Lands	1.5	PUD
30	61.16-1-69.3	Kent, Robert A	970	Other Wild Or Conservation Lands	0.03	PUD
31	61.16-1-64	Weatherfield Park III	970	Other Wild Or Conservation Lands	1.5	PUD
32	61.12-2-41	Weatherfield Park II	970	Other Wild Or Conservation Lands	6.9	PUD
33	61.12-1-6	Weatherfield Park II	970	Other Wild Or Conservation Lands	1.9	PUD
34	61.12-1-12	Weatherfield Park II	970	Other Wild Or Conservation Lands	1.28	PUD
35	61.00-1-46	State of New York	971	Wetlands, Either Privately or Governmentally Owned	13.3	RA3
36	61.00-1-31.2	New York State	970	Other Wild Or Conservation Lands	38.1	RA3
37	60.00-2-25	New York State	971	Wetlands, Either Privately or Governmentally Owned	64.6	RA3
38	60.00-2-12	New York State	971	Wetlands, Either Privately or Governmentally Owned	21	RA3
39	60.00-2-15.2	State of New York	971	Wetlands, Either Privately or Governmentally Owned	46.83	RA3
40	60.00-2-11.1	State of New York	970	Other Wild Or Conservation Lands	66.3	RA3
41	60.00-2-1.8	Town of Guilderland	970	Other Wild Or Conservation Lands	73.4	RA3
42	60.00-2-27	New York State	971	Wetlands, Either Privately or Governmentally Owned	2.73	RA3
43	60.00-2-26.2	New York State	971	Wetlands, Either Privately or Governmentally Owned	3.5	RA3
44	59.00-1-1	State of New York	910	Private Wild & Forest Lands (Except for Private Hunting & Fishing Clubs)	80.4	RA5
45	59.00-1-26	New York State	961	State Owned Public Parks, Recreation Areas & Other Multiple Uses	128.4	RA5
46	59.00-1-26	New York State	961	State Owned Public Parks, Recreation Areas & Other Multiple Uses	128.4	RA5
47	52.18-3-2	Town of Guilderland	970	Other Wild Or Conservation Lands	0.12	R15
48	52.15-2-23	Town of Guilderland	970	Other Wild Or Conservation Lands	0	R10
49	52.03-3-2.1	Canterbury Park	970	Other Wild Or Conservation Lands	25	TH
50	52.03-3-8	Canterbury Park	970	Other Wild Or Conservation Lands	11	TH
51	51.19-1-58.2	Town of Guilderland	970	Other Wild Or Conservation Lands	1.2	R15
52	51.19-1-58.3	Prescott Woods Homeowners	970	Other Wild Or Conservation Lands	1.51	R15
53	51.19-1-58.1	Prescott Woods Homeowners	970	Other Wild Or Conservation Lands	14	R15
54	51.18-1-80	Vale At Normanskill	970	Other Wild Or Conservation Lands	0.72	RO40
55	51.18-1-81	Vale At Normanskill	970	Other Wild Or Conservation Lands	8.22	RO40
56	51.18-2-29	Vale At Normanskill	970	Other Wild Or Conservation Lands	7.2	RO40
57	51.18-2-28	Vale At Normanskill	970	Other Wild Or Conservation Lands	2.4	RO40
58	51.18-1-84	Town of Guilderland	970	Other Wild Or Conservation Lands	6.8	RO40
59	51.18-1-83	Town of Guilderland	970	Other Wild Or Conservation Lands	0.71	RO40
60	51.18-1-82	Vale At Normanskill	970	Other Wild Or Conservation Lands	5.7	RO40
61	51.18-1-58	Vale At Normanskill	970	Other Wild Or Conservation Lands	1.39	RO40
62	51.16-1-41	Town of Guilderland	970	Other Wild Or Conservation Lands	0.16	RO40
63	51.15-2-21.2	Newkirk, Deborah A	970	Other Wild Or Conservation Lands	0.81	R15
64	51.15-3-13	Kavanaugh, John H	970	Other Wild Or Conservation Lands	1.3	R15
65	51.15-2-21.1	Little Falls LLC	970	Other Wild Or Conservation Lands	4.4	R15
66	51.15-1-41	Presidential Estates	970	Other Wild Or Conservation Lands	12.6	R15
67	51.15-3-27	Dura, Michael F	970	Other Wild Or Conservation Lands	0.3	R15
68	51.12-3-47	Town of Guilderland	970	Other Wild Or Conservation Lands	0.31	R15
69	51.10-1-11	Town of Guilderland	970	Other Wild Or Conservation Lands	2.1	R15
70	51.10-2-27	Town of Guilderland	970	Other Wild Or Conservation Lands	0.4	R15
71	51.08-6-1	Fort Orange Manor	970	Other Wild Or Conservation Lands	15.7	TH
72	51.07-3-18	Highwood Village	970	Other Wild Or Conservation Lands	1.04	TH
73	51.07-3-21	Highwood Village	970	Other Wild Or Conservation Lands	5.3	TH
74	51.02-3-28	Ruggaber, Anthony	970	Other Wild Or Conservation Lands	2.1	R10
75	51.02-3-8	Ruggaber, Anthony	970	Other Wild Or Conservation Lands	6.3	R15
76	51.02-3-7	Town of Guilderland	970	Other Wild Or Conservation Lands	1.16	R15
77	51.00-1-21.52	Town of Guilderland	970	Other Wild Or Conservation Lands	19.38	
78	51.00-1-4.3	Town of Guilderland	970	Other Wild Or Conservation Lands	0.5	R15
79	51.00-2-11	Town of Guilderland	963	City/Town/Village Public Parks & Recreation Areas	36.2	OS
80	49.00-3-111	Town of Guilderland	970	Other Wild Or Conservation Lands	3.39	RA3
81	49.00-3-109	Homeowners Association At	970	Other Wild Or Conservation Lands	0.44	RA3
82	49.00-3-105	Homeowners Association At	970	Other Wild Or Conservation Lands	0.34	RA3
83	49.00-3-60	Town of Guilderland	970	Other Wild Or Conservation Lands	1.98	RA3
84	49.00-3-10.11	Homeowners Association At	970	Other Wild Or Conservation Lands	67.33	RA3
85	49.00-3-95	Homeowners Association At	970	Other Wild Or Conservation Lands	0.76	RA3
86	49.00-3-94	Town of Guilderland	970	Other Wild Or Conservation Lands	0.7	RA3
87	49.00-3-73	Town of Guilderland	970	Other Wild Or Conservation Lands	1.21	RA3
88	49.00-3-63	Town of Guilderland	970	Other Wild Or Conservation Lands	1.85	RA3
89	49.00-3-50	Homeowners Association At	970	Other Wild Or Conservation Lands	0.26	RA3
90	41.00-1-1	New York State	970	Other Wild Or Conservation Lands	3.3	IN
91	41.00-1-3.2	State of New York	970	Other Wild Or Conservation Lands	6	IN
92	41.00-1-14	State of New York	970	Other Wild Or Conservation Lands	9.5	IN
93	41.00-1-5	Nature Conservancy	970	Other Wild Or Conservation Lands	16.6	IN
94	41.00-1-10	State of New York	920	Private Hunting & Fishing Clubs	5.5	IN
95	41.00-1-13	Town of Guilderland	970	Other Wild Or Conservation Lands	6.2	IN
96	40.14-1-9	Nature Conservancy	910	Private Wild & Forest Lands (Except for Private Hunting & Fishing Clubs)	37.88	RA0
97	40.10-2-10.1	Town of Guilderland	970	Other Wild Or Conservation Lands	1.4	R20
98	40.05-2-1	Town of Guilderland	970	Other Wild Or Conservation Lands	1.44	RA0
99	40.05-1-39	Country Village Townhouse	970	Other Wild Or Conservation Lands	1.91	TH
100	40.05-2-26	Marini Robert Bldrs Inc	970	Other Wild Or Conservation Lands	0.45	RA0
101	40.05-1-40	Country Village Townhouse	970	Other Wild Or Conservation Lands	49.8	TH
102	40.05-1-28	Country Village Townhouse	970	Other Wild Or Conservation Lands	0.7	TH
103	40.00-2-6.1	New York State Of	970	Other Wild Or Conservation Lands	46.1	R15
104	40.00-1-1.2	New York State	970	Other Wild Or Conservation Lands	2.7	RA0
105	40.00-1-16	Town of Guilderland	971	Wetlands, Either Privately or Governmentally Owned	18.4	AGR
106	40.00-1-17	Town of Guilderland	970	Other Wild Or Conservation Lands	1	RO40
107	40.00-2-2.1	Nature Conservancy	970	Other Wild Or Conservation Lands	93	R15
108	40.00-2-4	Nature Conservancy	970	Other Wild Or Conservation Lands	0.37	R15
109	40.00-2-13	Nature Conservancy	910	Private Wild & Forest Lands (Except for Private Hunting & Fishing Clubs)	7.7	BNRP

Number	PrintKey	OwnrName	PropC	Site Property_D	Acres	Zoningwith
110	39.15-1-69	Srb Developer Inc	970	Other Wild Or Conservation Lands	0.05	R20
111	39.15-1-68	Windmill Estates	970	Other Wild Or Conservation Lands	0.53	R20
112	39.15-1-59	Windmill Estates	970	Other Wild Or Conservation Lands	0.3	R20
113	39.15-1-54	Windmill Estates	970	Other Wild Or Conservation Lands	0.16	R20
114	39.15-1-53	Windmill Estates	970	Other Wild Or Conservation Lands	0.64	R20
115	39.15-1-48	Windmill Estates	970	Other Wild Or Conservation Lands	2.6	R20
116	39.15-1-34	Windmill Estates	970	Other Wild Or Conservation Lands	2.2	R20
117	39.15-1-16	Windmill Estates	970	Other Wild Or Conservation Lands	3.3	R20
118	39.15-1-4	Windmill Estates	970	Other Wild Or Conservation Lands	3.5	R20
119	39.08-3-51	Town of Guilderland	970	Other Wild Or Conservation Lands	4.5	R20
120	39.07-1-1	Town of Guilderland	970	Other Wild Or Conservation Lands	2.7	R20
121	39.00-2-72	Adirondack Development	970	Other Wild Or Conservation Lands	0.77	R20
122	39.00-2-80	Aucumpaugh, Derek W	970	Other Wild Or Conservation Lands	3.5	R20
123	39.00-1-27	Town of Guilderland	970	Other Wild Or Conservation Lands	0.22	RO40
124	39.00-1-29	Town of Guilderland	970	Other Wild Or Conservation Lands	0.25	RO40
125	39.00-3-38	Town of Guilderland	963	City/Town/Village Public Parks & Recreation Areas	95	OS
126	39.00-3-67	Town of Guilderland	970	Other Wild Or Conservation Lands	1.8	R15
127	39.00-2-73	Adirondack Development	970	Other Wild Or Conservation Lands	17.09	R20
128	39.00-2-66.4	Town of Guilderland	970	Other Wild Or Conservation Lands	54.34	RA3
129	39.00-1-13.1	Town of Guilderland	970	Other Wild Or Conservation Lands	52.7	RO40
130	37.00-3-20.2	Town of Guilderland	970	Other Wild Or Conservation Lands	36.5	RA3
131	36.00-1-12.2	Mohawk Hudson Land Conservancy	970	Other Wild Or Conservation Lands	140.7	RA5
132	36.00-1-58	Mohawk Hudson Land Conservancy	970	Other Wild Or Conservation Lands	72	RA5
133	28.17-4-22	Town of Guilderland	970	Other Wild Or Conservation Lands	0.67	R40
134	28.17-3-36	Old State Road	970	Other Wild Or Conservation Lands	5	TH
135	28.17-1-1	Old State Road, Homeowners Assoc Inc	970	Other Wild Or Conservation Lands	8	R20
136	28.15-1-1.2	Nature Conservancy	970	Other Wild Or Conservation Lands	0.37	R40
137	28.05-2-7.13	Town of Guilderland	970	Other Wild Or Conservation Lands	0.36	R15
138	28.00-3-1.1	Town of Guilderland	970	Other Wild Or Conservation Lands	81.82	RO30
139	28.00-1-43.1	Nature Conservancy	920	Private Hunting & Fishing Clubs	35.7	R40
140	28.00-2-2.2	State of New York	970	Other Wild Or Conservation Lands	30.3	R40
141	28.00-2-15	New York State Dept Of	970	Other Wild Or Conservation Lands	6.3	R40
142	28.00-2-16	New York State Dept Of	970	Other Wild Or Conservation Lands	4.1	R40
143	28.00-2-17	New York State Dept Of	970	Other Wild Or Conservation Lands	3.9	R40
144	28.00-2-18	New York State Dept Of	970	Other Wild Or Conservation Lands	6.2	R40
145	28.00-2-19	New York State Dept Of	970	Other Wild Or Conservation Lands	9.5	R40
146	28.00-2-20	New York State Dept Of	970	Other Wild Or Conservation Lands	6	R40
147	28.00-1-56	New York State Of	970	Other Wild Or Conservation Lands	52.3	R40
148	28.00-1-55.2	State of New York	910	Private Wild & Forest Lands (Except for Private Hunting & Fishing Clubs)	15.7	R40
149	28.00-2-1.6	Town of Guilderland	963	City/Town/Village Public Parks & Recreation Areas	28.61	OS
150	28.00-3-23	State of New York	970	Other Wild Or Conservation Lands	3	R40
151	28.00-3-20	State of New York	970	Other Wild Or Conservation Lands	31	R40
152	28.00-3-22	State of New York	970	Other Wild Or Conservation Lands	57.8	R40
153	28.00-3-19	State of New York	970	Other Wild Or Conservation Lands	30.29	R40
154	28.00-3-18	State of New York	970	Other Wild Or Conservation Lands	46.8	R40
155	28.00-3-17	State of New York	970	Other Wild Or Conservation Lands	169.73	R40
156	28.00-3-14.1	State of New York	970	Other Wild Or Conservation Lands	101.8	R40
157	28.00-3-13	State of New York	970	Other Wild Or Conservation Lands	26.3	RO30
158	28.00-3-7.1	Town of Guilderland	970	Other Wild Or Conservation Lands	44.29	R40
159	28.00-3-8.1	Town of Guilderland	963	City/Town/Village Public Parks & Recreation Areas	108.3	OS
160	27.20-2-14	Polisnelli, Frederico Giovanni	970	Other Wild Or Conservation Lands	8.4	R15
161	27.20-2-15	Polisnelli, Frederico Giovanni	970	Other Wild Or Conservation Lands	8	R15
162	27.19-3-25	Nathaniel Place	970	Other Wild Or Conservation Lands	3	R20
163	27.19-3-36	Nathaniel Place	970	Other Wild Or Conservation Lands	0.24	R20
164	27.18-2-35	Town of Guilderland	970	Other Wild Or Conservation Lands	1.02	R20
165	27.18-2-32	Armstrong, Marvin	970	Other Wild Or Conservation Lands	1	R20
166	27.17-1-32	Town of Guilderland	970	Other Wild Or Conservation Lands	0.53	R20
167	27.17-1-30	Town of Guilderland	970	Other Wild Or Conservation Lands	0.74	R20
168	27.16-3-21.107	Pine Bush Manor Homeowner Asso	970	Other Wild Or Conservation Lands	0.66	RO30
169	27.16-2-46	Homeowners Associates Inc, Pine Bush Man	970	Other Wild Or Conservation Lands	10.1	R15
170	27.16-1-37	Serafini-Spawm Hollow	970	Other Wild Or Conservation Lands	3.1	R15
171	27.16-3-21.101	Town of Guilderland	970	Other Wild Or Conservation Lands	5.5	RO30
172	27.15-1-51.1	Town of Guilderland	970	Other Wild Or Conservation Lands	0.67	R15
173	27.15-4-11	Town of Guilderland	970	Other Wild Or Conservation Lands	2.2	RO30
174	27.15-4-16	Larapa LLC	970	Other Wild Or Conservation Lands	4.6	RO30
175	27.14-1-39	Town of Guilderland	970	Other Wild Or Conservation Lands	0.75	R15
176	27.14-3-1	Kemper Building Group Inc	970	Other Wild Or Conservation Lands	0.65	R15
177	27.14-2-1	Albany County Land Bank Corp	971	Wetlands, Either Privately or Governmentally Owned	3.5	R15
178	27.12-1-32	Town of Guilderland	970	Other Wild Or Conservation Lands	31.1	RO30
179	27.12-1-31	Town of Guilderland	963	City/Town/Village Public Parks & Recreation Areas	8.3	RO30
180	27.11-1-23	Gables At Mallard's Pond	970	Other Wild Or Conservation Lands	6.7	MR
181	27.07-4-59	Town of Guilderland	970	Other Wild Or Conservation Lands	1.69	RO30
182	27.06-2-45	Georgetown Square	970	Other Wild Or Conservation Lands	2.27	TH
183	27.05-1-42.1	Serafini Anthony Builder Inc	970	Other Wild Or Conservation Lands	2.83	R20
184	27.05-1-41	Comparetta, Guy F	970	Other Wild Or Conservation Lands	0.63	R20
185	27.05-3-36	Georgetown Square	970	Other Wild Or Conservation Lands	16.2	TH
186	27.05-3-37	Ismail, Khalil	970	Other Wild Or Conservation Lands	2.7	R20
187	27.00-1-43.13	Town of Guilderland	970	Other Wild Or Conservation Lands	0.89	R40
188	27.00-1-43.1	Spring Farm Estates	970	Other Wild Or Conservation Lands	12.8	R40
189	24.00-1-16	Niskayuna Forest Fish & Game	920	Private Hunting & Fishing Clubs	75	RA5
190	15.20-1-1	Town of Guilderland	970	Other Wild Or Conservation Lands	6.5	R15
191	15.19-5-63	Town of Guilderland	970	Other Wild Or Conservation Lands	1.29	RO30
192	15.18-3-45	Town of Guilderland	970	Other Wild Or Conservation Lands	0.09	R15
193	15.17-1-100	Town of Guilderland	970	Other Wild Or Conservation Lands	2.1	R40
194	15.17-1-47	Logan Manor Of Guilderland	970	Other Wild Or Conservation Lands	1.5	R20
195	15.17-1-42	Logan Manor Of Guilderland	970	Other Wild Or Conservation Lands	0.25	R20
196	15.17-1-33	Logan Manor Of Guilderland	970	Other Wild Or Conservation Lands	3.2	R20
197	15.17-1-80	Logan Manor Of Guilderland	970	Other Wild Or Conservation Lands	5.9	R20
198	15.17-1-19	Town of Guilderland	970	Other Wild Or Conservation Lands	2.2	R20
199	15.17-1-1	Logan Manor Of Guilderland	970	Other Wild Or Conservation Lands	0.27	R20
200	15.15-1-31	Manchester Assoc Ltd	970	Other Wild Or Conservation Lands	0.07	R15
201	15.14-2-67	Town of Guilderland	970	Other Wild Or Conservation Lands	0.31	R15
202	15.10-4-19	Rosedale Meadows	970	Other Wild Or Conservation Lands	0.77	TH
203	15.10-4-51	Rosedale Meadows	970	Other Wild Or Conservation Lands	7.8	TH
204	15.10-4-45	Rosedale Meadows	970	Other Wild Or Conservation Lands	0	TH
205	15.10-4-41	Rosedale Meadows	970	Other Wild Or Conservation Lands	0.38	TH
206	15.10-5-9	Stevens Farm Homeowners	970	Other Wild Or Conservation Lands	0.1	R40
207	15.10-5-41	Stevens Farm Homeowners	970	Other Wild Or Conservation Lands	0.17	R40
208	15.09-1-11	Stevens Farm Homeowners	970	Other Wild Or Conservation Lands	23.9	R40
209	15.14-3-13	Town of Guilderland	822	Water Supply	5.4	OS
210	51.00-1-13.2	Hiawatha Trails LLC	552	Public Golf Courses	40.7	RO40
211	50.00-3-10.1	Albany Country Club	553	Private Golf Country Clubs	844.23	PUD, RA3
212	40.00-1-1.1	Pinehaven Country Club Inc	553	Private Golf Country Clubs	125.9	R40
213	40.00-1-2	Pinehaven Country Club Inc	553	Private Golf Country Clubs	34.1	R40
214	40.00-1-14	Pinehaven Golf & C C Inc	552	Public Golf Courses	72.3	R40
215	39.00-3-56.1	Town of Guilderland	552	Public Golf Courses	285.9	RO40
216	37.00-2-2.11	Orchard Creek Realty LLC	552	Public Golf Courses	66	RA3
217	37.00-2-27	Orchard Creek Realty LLC	552	Public Golf Courses	41	RA3
218	25.00-2-34.12	Orchard Creek Realty LLC	552	Public Golf Courses	44	RA3



# BRANDING, PROMOTIONS & PROGRAMMING

- Branding program initiatives:
  - “Hike Guilderland”
  - “Get Out and Walk This Winter”
- Fall photo contest
- Trail Bingo
- School District Community Calendar
- Mass e-mails, socail media, websites
- Additional signage on main highways
- Scout projects and yearly cleaning up
- Currently working on publicizing suggested routes incorporating sidewalks with trail system




Guilderland Parks & Recreation

etter understand the purpose or a page. See actions taken by the people who manage and post content.

Page created – 18 March 2019

Page manager location: United States


Related Pages



Westmere Fire Departme...

Fire station


Like



Guiderland Farmer's Ma...

Farmers' market

Like



Western Turnpike Golf C...

Golf course & country club

Like

Add your business to Facebook

Showcase your work, create ads and connect with customers or supporters.

Create Page

17

1 comment

Like

Comment

Share

Most relevant

Write a comment...

Jennifer Craft Hogan

My kids always love going to your summer camp but they had THE BEST TIME last year!! While I hope you can

Guiderland Parks & Recreation

26 May 2020

Entries for Scavenger Hunt BINGO keep coming in! Grab your hiking buddy and check out the trails - We will pick our raffle winner on Monday, June 1st!

Information and BINGO board can be found here: [https://www.townofguilderland.org/.../guilderland\\_parks...](https://www.townofguilderland.org/.../guilderland_parks...)

Guiderland Parks & Recreation Parks and Trails BINGO Scavenger Hunt Directions

Spring is here, and it's the perfect time to get out and enjoy nature! Whether you are a seasoned Town of Guilderland hiker, or a newbie, we have a fun activity for you to do solo or with family. You have from now until Monday, June 1st to participate!

included is a BINGO sheet, and each column is a different trail in Town. The goal is to head to a listed trail, and look out for all the clues while you hike so you get all 5 items in the column! Take a selfie with each item, and submit your completed BINGO card and photos to the Guiderland Parks & Recreation Facebook page - you can Facebook message us the card and photos as attachments.

FALL PHOTO CONTEST

HOSTED BY GUILDERLAND PARKS & RECREATION AND THE NINES AT WESTERN TURNPIKE

HOW TO PARTICIPATE:

Starting October 1st, visit any of our parks and trails, and take a fall-themed photo! Send us your digital photo by messaging Guiderland Parks & Recreation on Facebook!

We will accept photo submissions until Friday, October 23rd! The last week of October, all photo-submissions will be shared in an album on our Facebook, and the photo with the most likes will win a gift card to The Nines at Western Turnpike!

Questions? Call the Rec Office at 518-456-3150!

## HIKE GUILDERLAND: <https://cutt.ly/HikeGuilderland>

Hiike Guilderland!

No issues detected

Home page

Welcome

The Town is pleased to offer a new interactive mapping of hiking trails located within the Town of Guilderland. In addition to the Town's hiking trails at Tawasentha Park and Vosburgh Open Space, there are also hiking trails managed by the Albany Pine Bush Preserve Commission, DEC (Black Creek Marsh Wildlife Management Area), and Mohawk Hudson Land Conservancy (Bozen Kill Preserve). Using the interactive map, you can zoom to a specific trail for detailed information including a trail description, length, and trailhead locations, and general information useful for hikers, runners, cyclists, and winter sports enthusiasts. Below are summaries of these hiking options:

Tawasentha Main Park Trails

Winter Recreation Trails

Community Gardens Trails

Vosburgh Trails

Bozen Kill Preserve Trails

Black Creek M...

Overview Map

## SCHOOL DISTRICT COMMUNITY CALENDAR: <https://www.guiderlandschools.org/calendar/>

Guiderland

CENTRAL SCHOOL DISTRICT

Home Contact Us Directions Staff Resources Search

Altamont Elementary Guiderland Elementary Lyndwood Elementary Pine Bush Elementary Westmere Elementary Fairweather MS Guiderland HS

About Us Academics Athletics Board of Education Budget & Taxes District Services News

Home > Calendar

Calendar

March - April, 2021

Monday, March 22, 2021 - Friday, March 26, 2021  
FMS School Spirit Week

Tuesday, March 23, 2021  
Superintendent's draft budget presentation and budget Q&A

Monday, March 22, 2021 - Friday, March 26, 2021  
FMS School Spirit Week

Monday, March 22, 2021 - Friday, March 26, 2021  
FMS School Spirit Week

Additional Calendars

Google Calendar

The calendar automatically defaults to an "agenda" view. To view this calendar in "month" or "week" format, go to the [Guiderland Google calendar page](#).

2020-21 Calendar at a Glance

[Download the 2020-21 calendar poster for the 2020-21 academic year or download a PDF poster.](#)

OTHER GREAT GUILDERLAND HIKES

Guiderland's hiking trails are a great way to enjoy the outdoors. The trails are also popular for mountain biking and cross-country skiing.

The Guiderland Hikes Trail: The Preserve has 10 miles of hand-marked multiple-use trails. The trails are considered easy to moderate, mostly flat and gentle slopes, with sandy trails and scattered potholes.

Guiderland's Hikes Trail: The Preserve has 10 miles of hand-marked multiple-use trails. The trails are considered easy to moderate, mostly flat and gentle slopes, with sandy trails and scattered potholes.

Guiderland's Hikes Trail: The Preserve has 10 miles of hand-marked multiple-use trails. The trails are considered easy to moderate, mostly flat and gentle slopes, with sandy trails and scattered potholes.

Boy Scouts and adult leaders from Guiderland Boy Scout Troops 24, 50, 83, and 264 participated in the 11th Annual Community Service Work Day at Tawasentha Park. The Scouts worked on improving drainage at several wet spots in the Park's trail network and performed required maintenance work on the trail along the Normanskill Creek.

With the help of 11 Boy Scout Troop 3050 members, Jesse Bulla completed his Eagle Scout project by Eagle Scout Project constructing and installing an informational kiosk at the Vosburgh Road trail-head.

Scouts in Guiderland's Troop 50 pose on a bridge at Tawasentha Park that they helped Matt Hesler construct for his Eagle project.

Members of the Altamont Reformed Church and the Niskayuna Reformed Church after spring clean-up at the Community Gardens.