

P.L. 94-171 VOTING DISTRICT/STATE LEGISLATIVE DISTRICT OUTLINE MAP (CENSUS 2000)

**GEOGRAPHIC AREAS LEGEND**

SYMBOL	NAME STYLE
*****	INTERNATIONAL
*****	AIR (FEDERAL)
*****	AIR (State)
*****	TDSA
///////	STATE
	COUNTY
	MINOR CIVIL DIV <sup>1</sup>
	Incorporated Place <sup>1</sup>
	Census Designated Place <sup>1</sup>
—————	Voting District <sup>2</sup>
●●●●●	SLD-Senate
▲▲▲▲▲	SLD-House
□□□□□	Minority <sup>2</sup>
□□□□□	Inset
□□□□□	Out Area

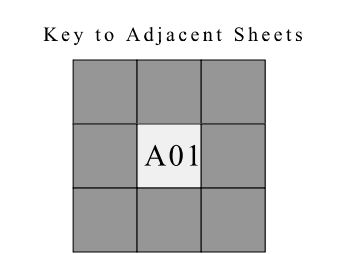
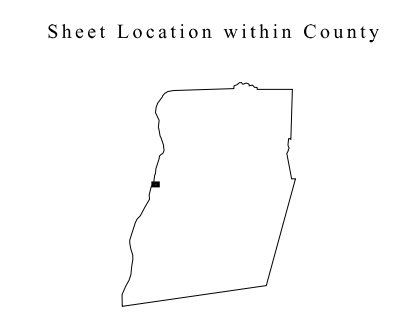
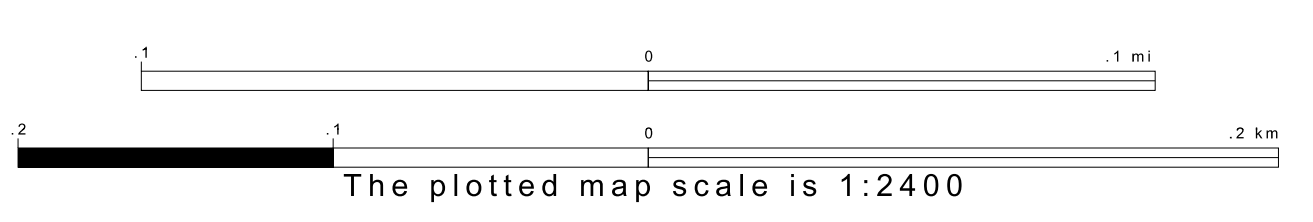
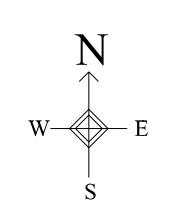
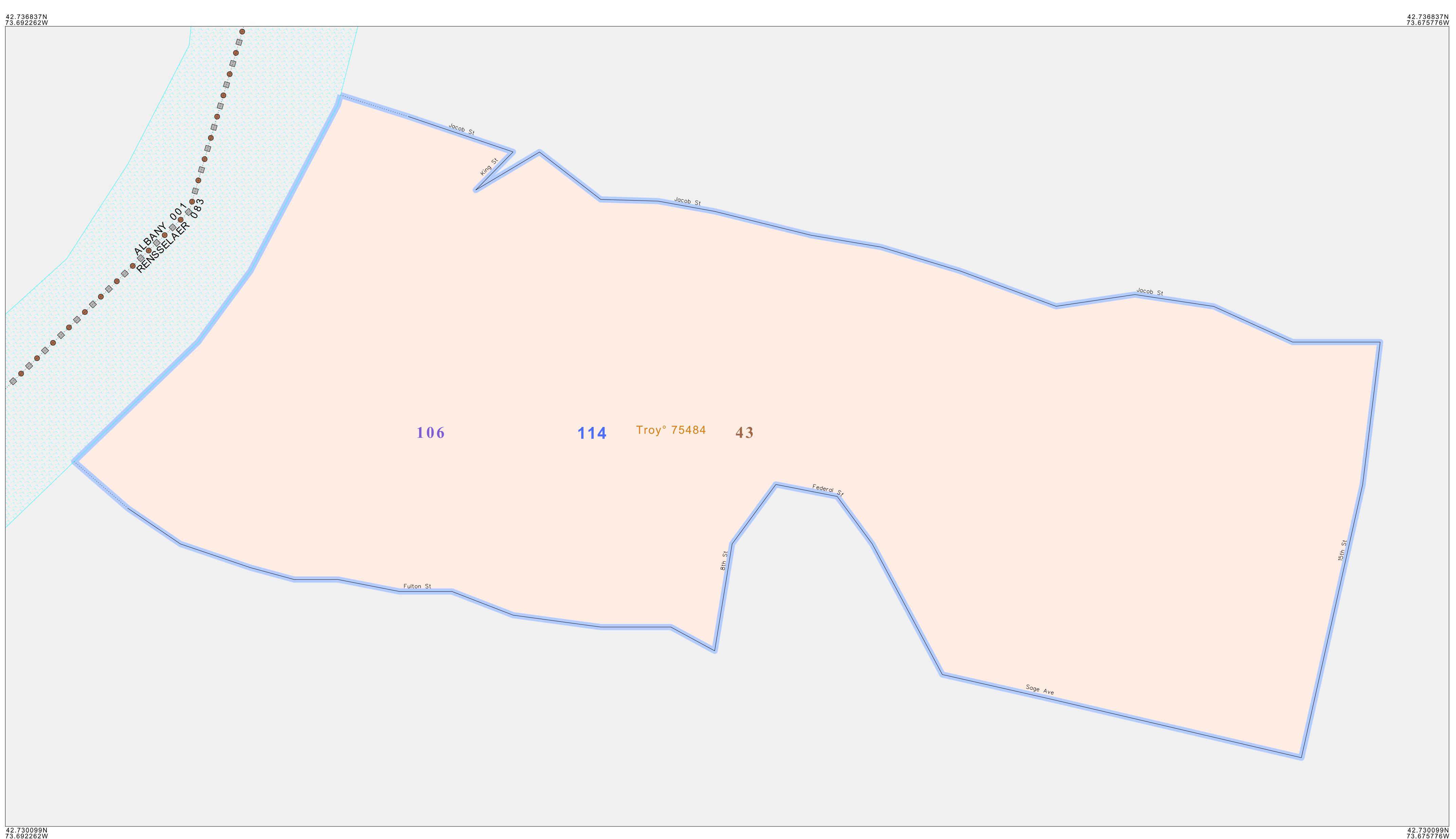
Abbreviation Reference: AIR = American Indian Reservation; TDSA = Tribal Designated Statistical Area; SDAISA = State Designated American Indian Statistical Area

1 A " " following a place name indicates that the place is coterminous with a MCD. A " " indicates that the place is also a false MCD. In both cases, the MCD name is shown only when it differs from the place name.

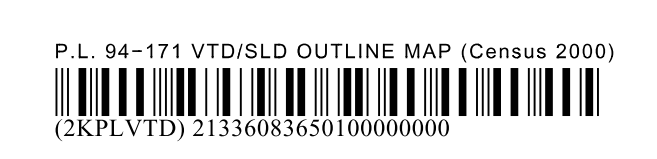
2 A " " following a VTD code indicates an actual voting district. Its absence indicates that the VTD is a pseudo voting district or no information is available as to its status.

**Voting Districts**

Code	Name
114	Voting District 160016



ST: New York (36)  
 COU: Rensselaer (083)  
 INSET SHEET A01



All legal boundaries and names are as of January 1, 2000. The boundaries shown on this map are for Census Bureau statistical data collection and tabulation purposes only; their depiction and designation for statistical purposes does not constitute a determination of jurisdictional authority or rights of ownership or entitlement. U.S. DEPARTMENT OF COMMERCE Economics and Statistics Administration U.S. Census Bureau