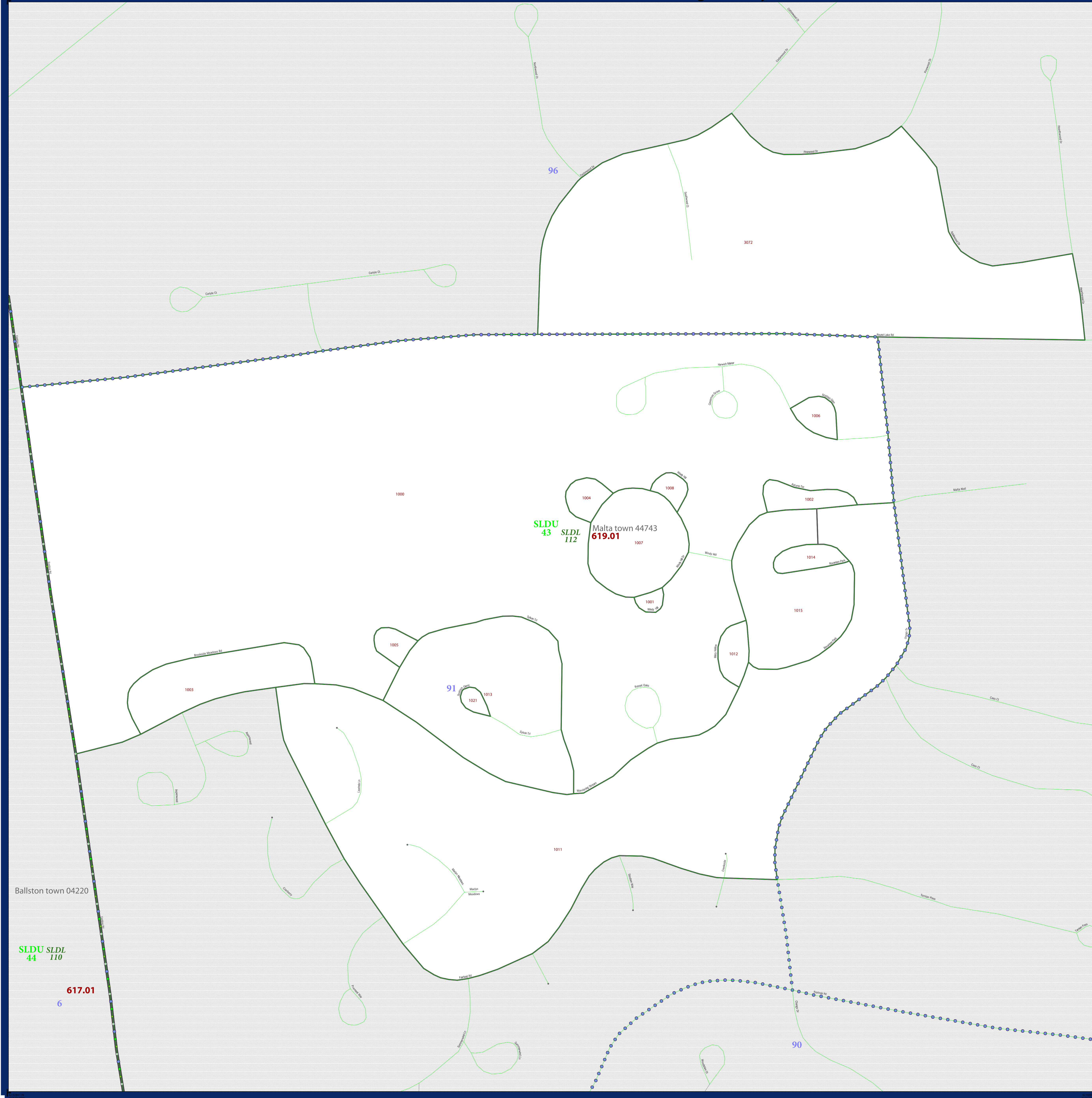


# P.L. 94-171 COUNTY BLOCK MAP (2010 CENSUS): Saratoga County, NY



| DESCRIPTION   | SYMBOL    | DESCRIPTION  | SYMBOL    |
|---|-----------|--|-----------|
| Interstate  | — — — — — | Geographic Offset or Corridor                      | — — — — — |
| U.S. Highway  | — — — — — | Water Body   | — — — — — |
| State Highway   | — — — — — | Swamp, Marsh, or Gravel Pit/Quarry                 | — — — — — |
| Other Road  | — — — — — | Marsh Ln   | — — — — — |
| Cul-de-sac  | — — — — — | Glacier  | — — — — — |
| Circle  | — — — — — | Military   | — — — — — |
| 4WD Trail, Stairway, Alley, Walkway, or Ferry           | — — — — — | National or State Park, Forest, or Recreation Area | — — — — — |
| Railroad  | — — — — — | Airport  | — — — — — |
| Pipeline or Power Line                                  | — — — — — | Selected Mountain Peaks                            | — — — — — |
| Ridge or Fence  | — — — — — | Inset Area   | — — — — — |
| Property Line   | — — — — — | Outside Subject Area                               | — — — — — |
| Perennial Stream  | — — — — — |  |           |
| Intermittent Stream                                     | — — — — — |  |           |
| Nonvisible Boundary or Feature Not Elsewhere Classified | — — — — — |  |           |

Where state, county, and/or MCD/CCD boundaries coincide, the map shows the boundary symbol for only the highest-ranking of these boundaries. Where American Indian reservation and American Indian tribal subdivision boundaries coincide, the map shows only the American Indian reservation boundaries. Where Oklahoma tribal statistical area boundaries and American Indian tribal subdivision boundaries coincide, the map shows only the Oklahoma tribal statistical area boundaries.

1 A "\*" following an MCD name denotes a false MCD. A "\*" following a place name indicates that a false MCD exists with the same name and FIPS code as the place; the false MCD label is not shown.

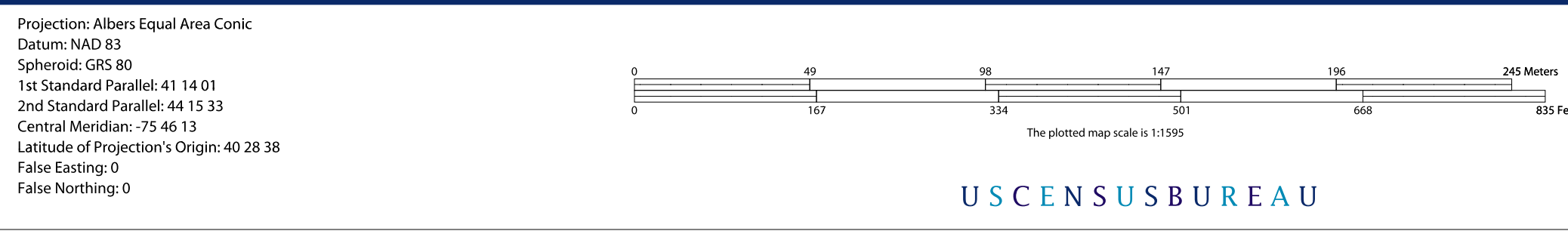
2 Place label color correlates to the place fill color.

3 A "\*" following a block number indicates that the block number is repeated elsewhere in the block.

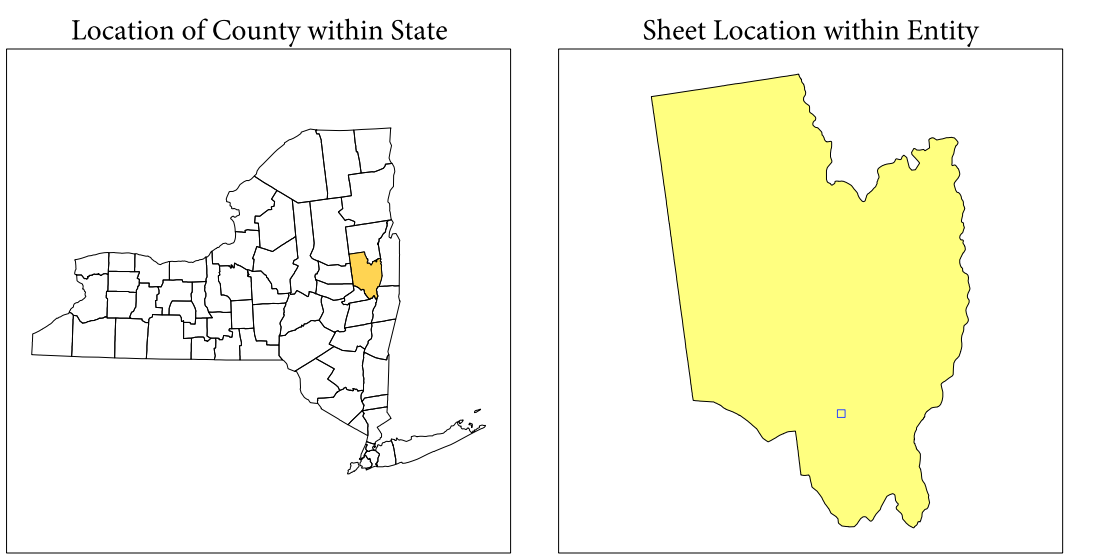
All legal boundaries and names are as of January 1, 2010. The boundaries shown on this map are for Census Bureau statistical data collection and tabulation purposes only; their depiction and designation for statistical purposes does not constitute a determination of jurisdictional authority or rights of ownership or entitlement.

Geographic Vintage: 2010 Census (reference date: January 1, 2010)  
 Data Source: U.S. Census Bureau's MAINTIGER database (TAB100236)  
 Map Created by Geography Division: January 07, 2011

U.S. DEPARTMENT OF COMMERCE Economics and Statistics Administration U.S. Census Bureau



INSET SHEET J1  
 Total Sheets: 39  
 Index Sheets: 1  
 Parent Sheets: 22  
 Inset Sheets: 16



NAME: Saratoga County (091)  
 ENTITY TYPE: County or statistically equivalent entity  
 ST: New York (36)

2010 PL BLOCK MAP (INSET)  
 2010/06/01