



Community Growth Profile

Town of Westerlo, NY



The following Community Growth Profile provides information regarding development patterns in the Town of Westerlo, Albany County, NY. This report includes a current land use map, a map showing single family homes built in the last 20 years and new roads built over the last ten years. Also included are population and population projections, housing units, and greenhouse gas emissions data.

Population/Projections

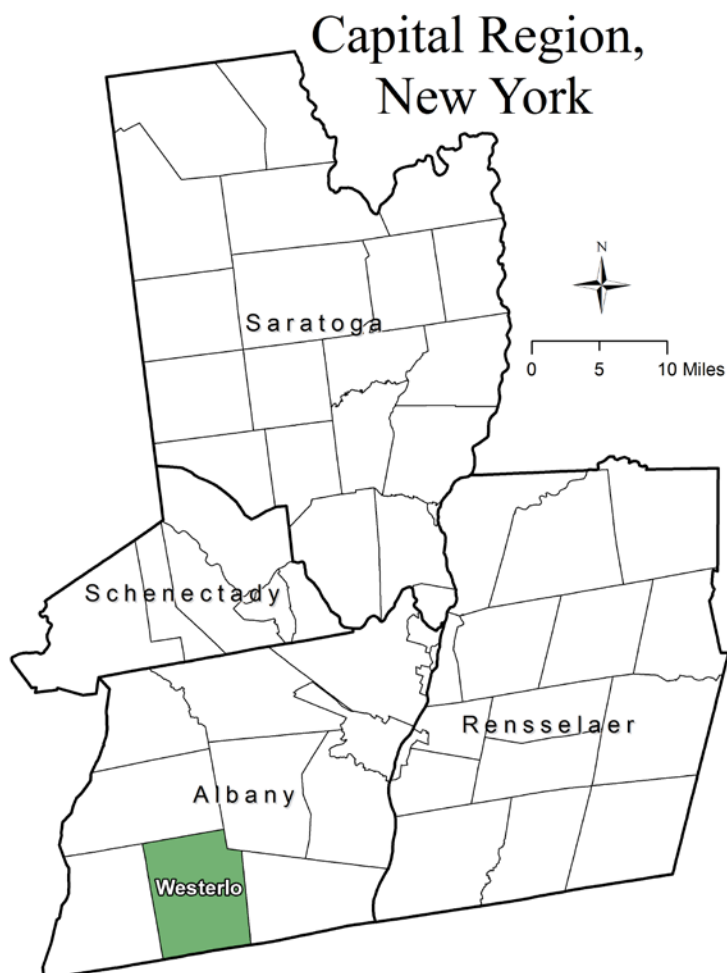
1980	1990	2000	2010	2020	2030	2040	2050
2,929	3,325	3,466	3,361	3,439	3,525	3,559	3,550

Source: U.S. Census 1980, 1990, 2000, 2010 ; CDRPC Projections

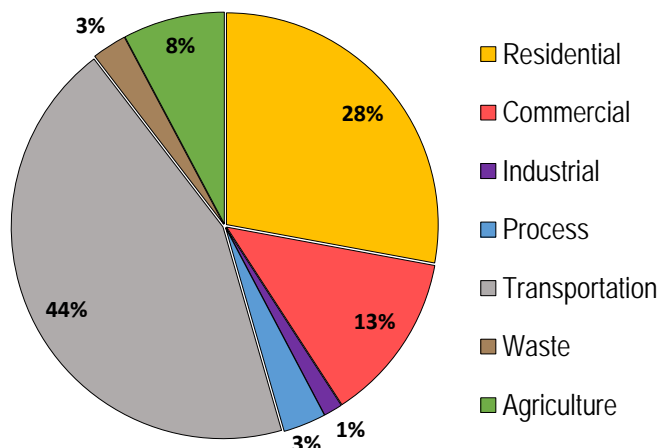
Housing Units 1980-2015

	1980	1990	2000	2010	2015
Total Housing Units	1,218	1,436	1,537	1,600	1,614

Source: U.S. Census 1980, 1990, 2000, 2010; U.S. Census Building Permit Survey 2011-15



Greenhouse Gas Emissions by Sector

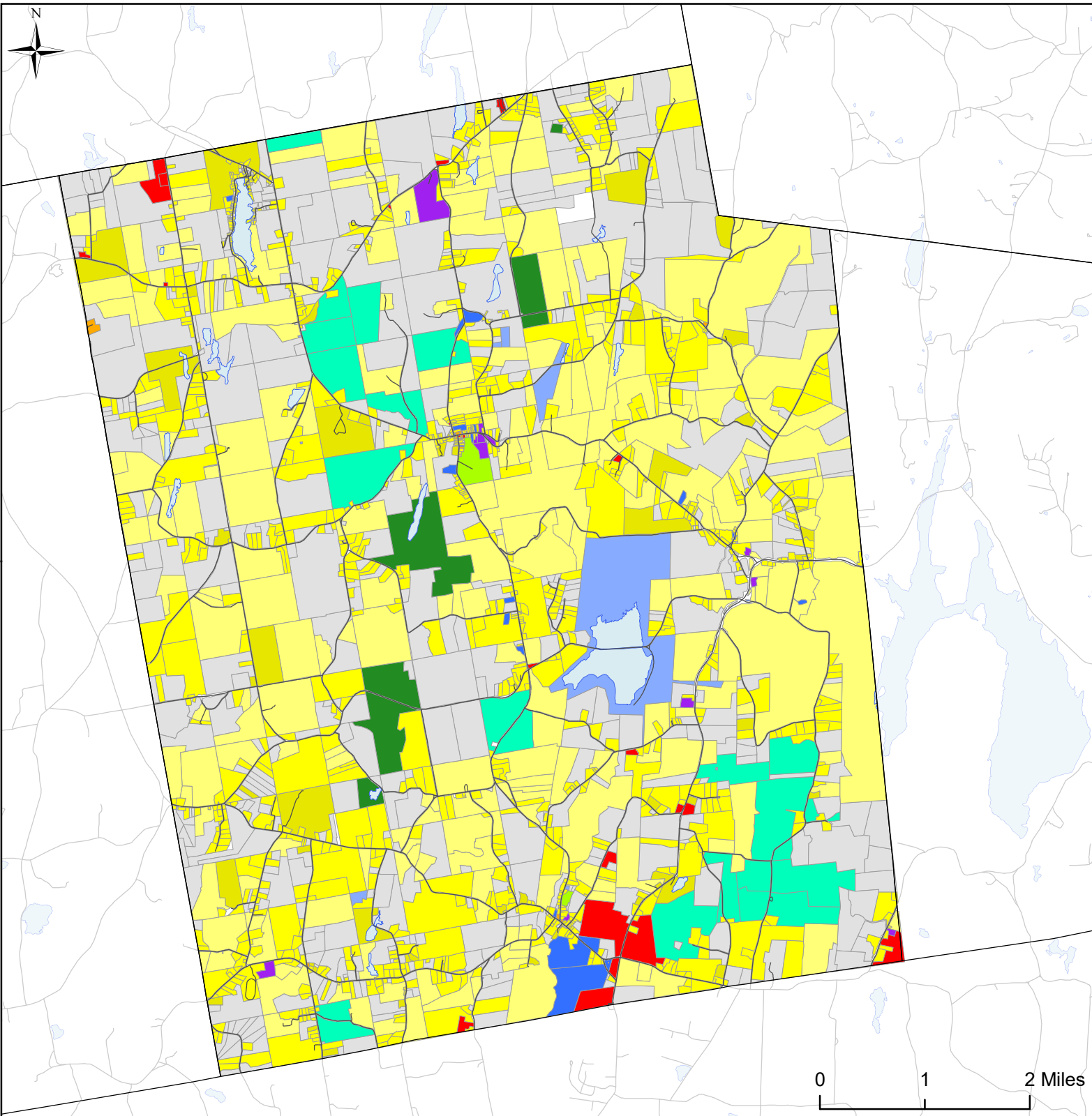


Per capita emissions (MTCO₂e*)

Town of Westerlo	12
Albany County	21
Capital District	15

Source: Capital District 2010 Regional GHG Inventory

*Metric Tons Carbon Dioxide Equivalent



Town of Westerlo, NY Land Use



Land Use

■ Agricultural

■ Outdoor Recreation

■ Wild, Forested and Conservation Lands

■ Commercial

■ Recreation and Entertainment

■ Industrial

■ Community Services

■ Mixed-Use

■ Single Family

■ Multi-Family

■ Large Lot Residential

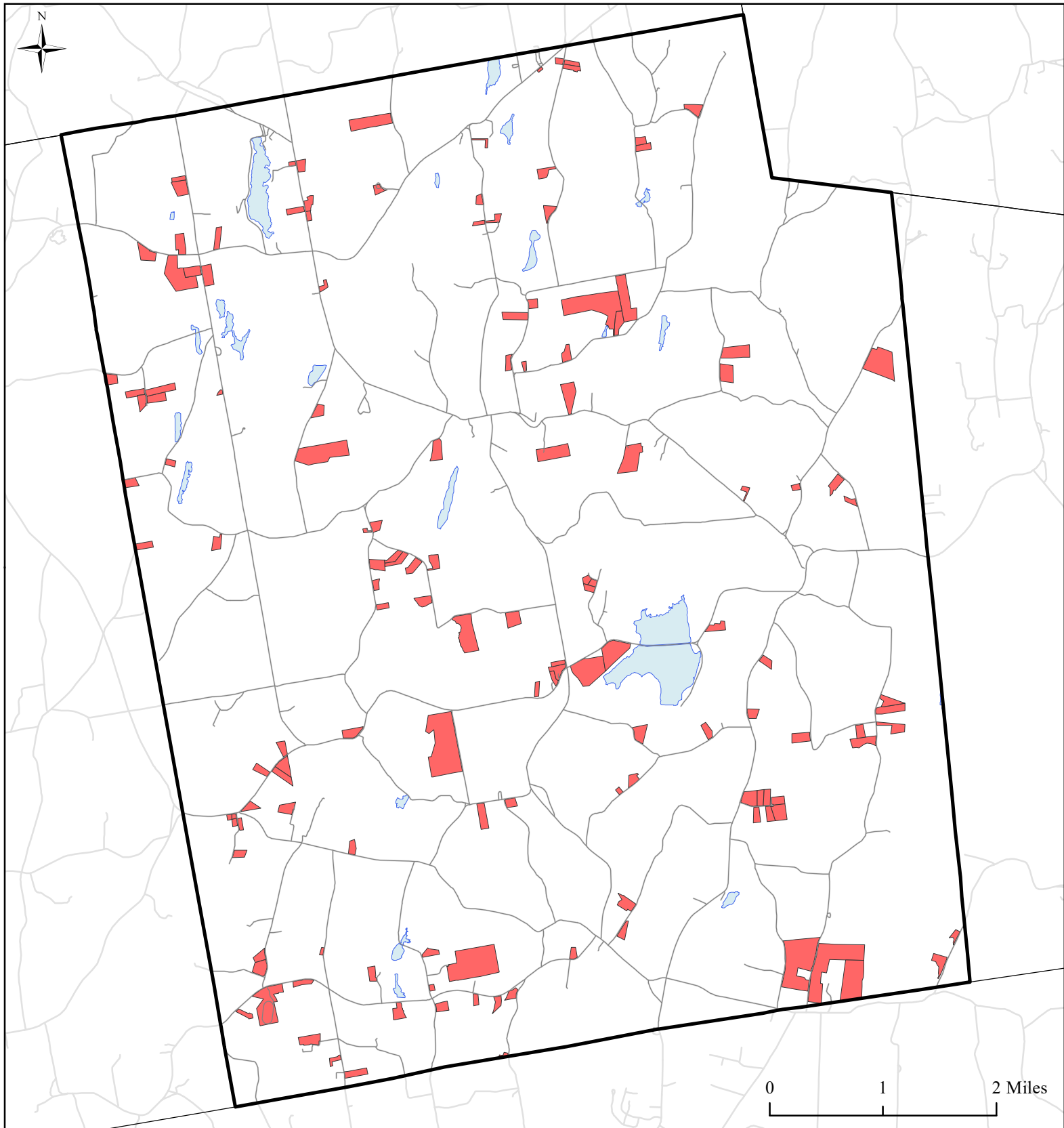
■ Public Services and Utilities

■ Vacant Land

■ Water Bodies

Municipal Boundaries

— Roads



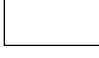
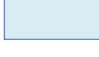



Town of Westerlo, NY

Single Family Homes Built

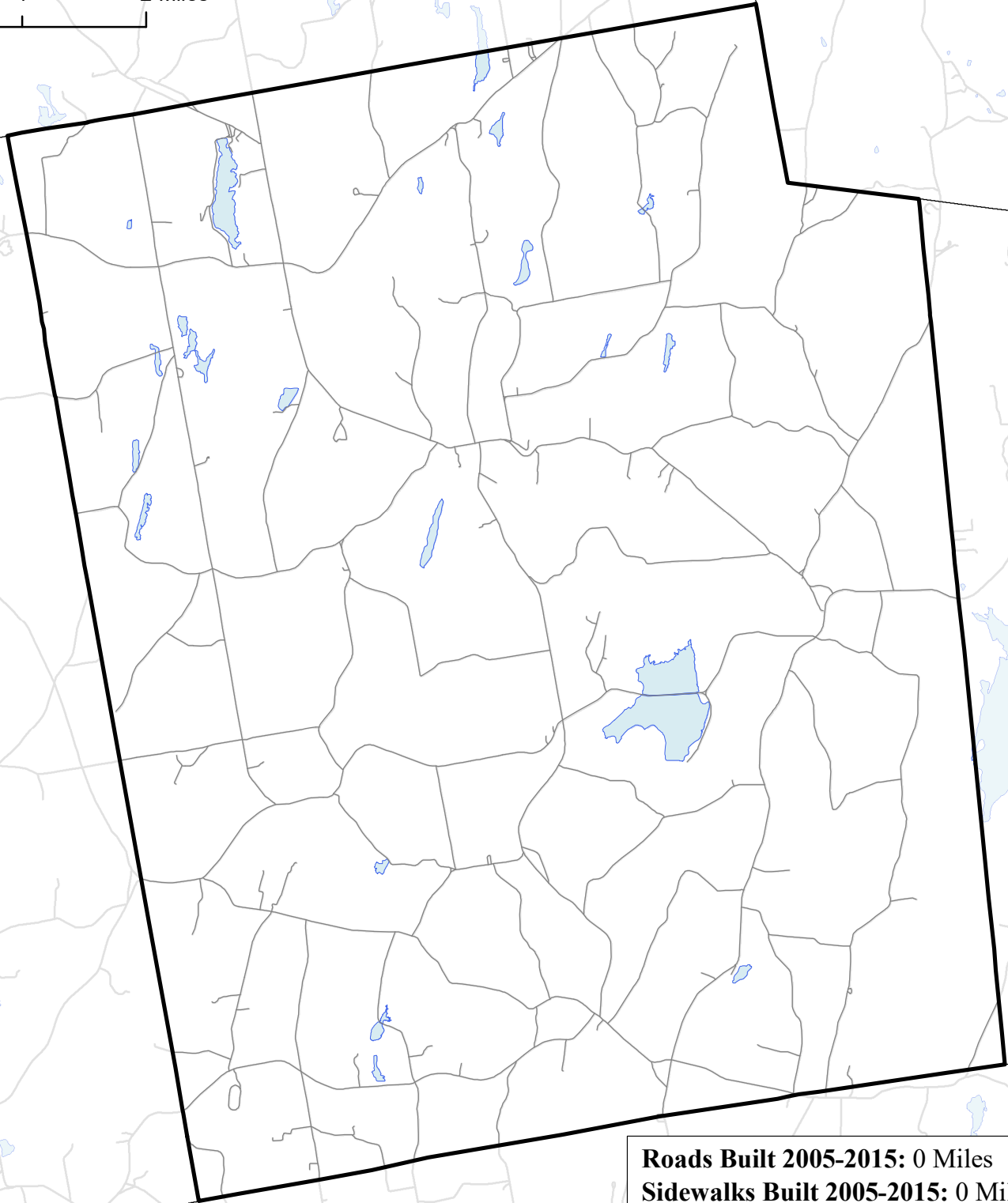
1995-2015



-  Single Family Homes Built 1995-2015
-  Westerlo Boundary
-  Municipal Boundaries
-  Water Bodies
-  Roads

Source: Albany County tax parcel data; NYS GIS Program Office 2016

0 1 2 Miles



Roads Built 2005-2015: 0 Miles
Sidewalks Built 2005-2015: 0 Miles
Percent Roads with Sidewalks*: 0%

**Does not include pre-existing sidewalks built prior to 2005*

Town of Westerlo, NY

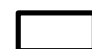
Roads Built 2005-2015



Roads Built 2005-2015


— Sidewalk

— No Sidewalk

 Town of Westerlo

 Municipal
Boundaries

 Water Bodies

 Roads Built Prior
to 2005

Source: NYS GIS Clearinghouse, GIS Program Office