



Community Growth Profile

Town of Stillwater, NY



The following Community Growth Profile provides information regarding development patterns in the Town of Stillwater, Saratoga County, NY. This report includes a current land use map, a map showing single family homes built in the last 20 years and new roads built over the last ten years. Also included are population and population projections, housing units, and greenhouse gas emissions data.

Population/Projections

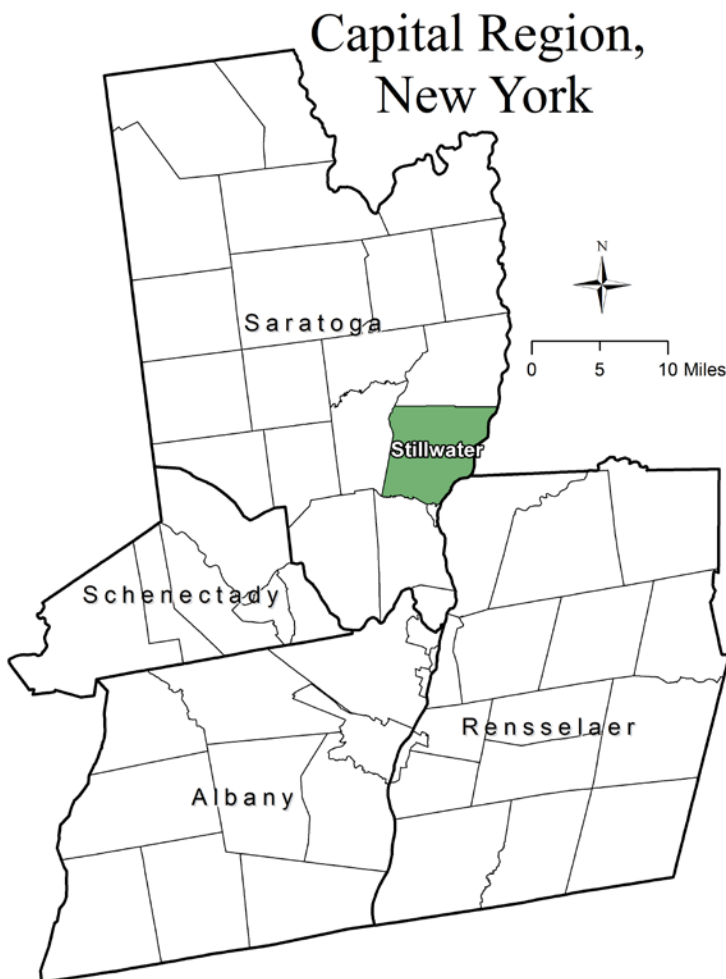
1980	1990	2000	2010	2020	2030	2040	2050
6,316	7,233	7,522	8,287	8,733	9,156	9,281	9,260

Source: U.S. Census 1980, 1990, 2000, 2010 ; CDRPC Projections

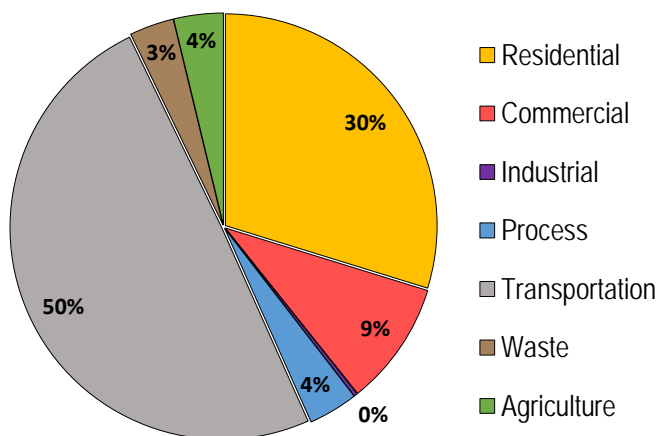
Housing Units 1980-2015

	1980	1990	2000	2010	2015
Total Housing Units	2,617	2,882	3,054	3,480	3,673

Source: U.S. Census 1980, 1990, 2000, 2010; U.S. Census Building Permit Survey 2011-15



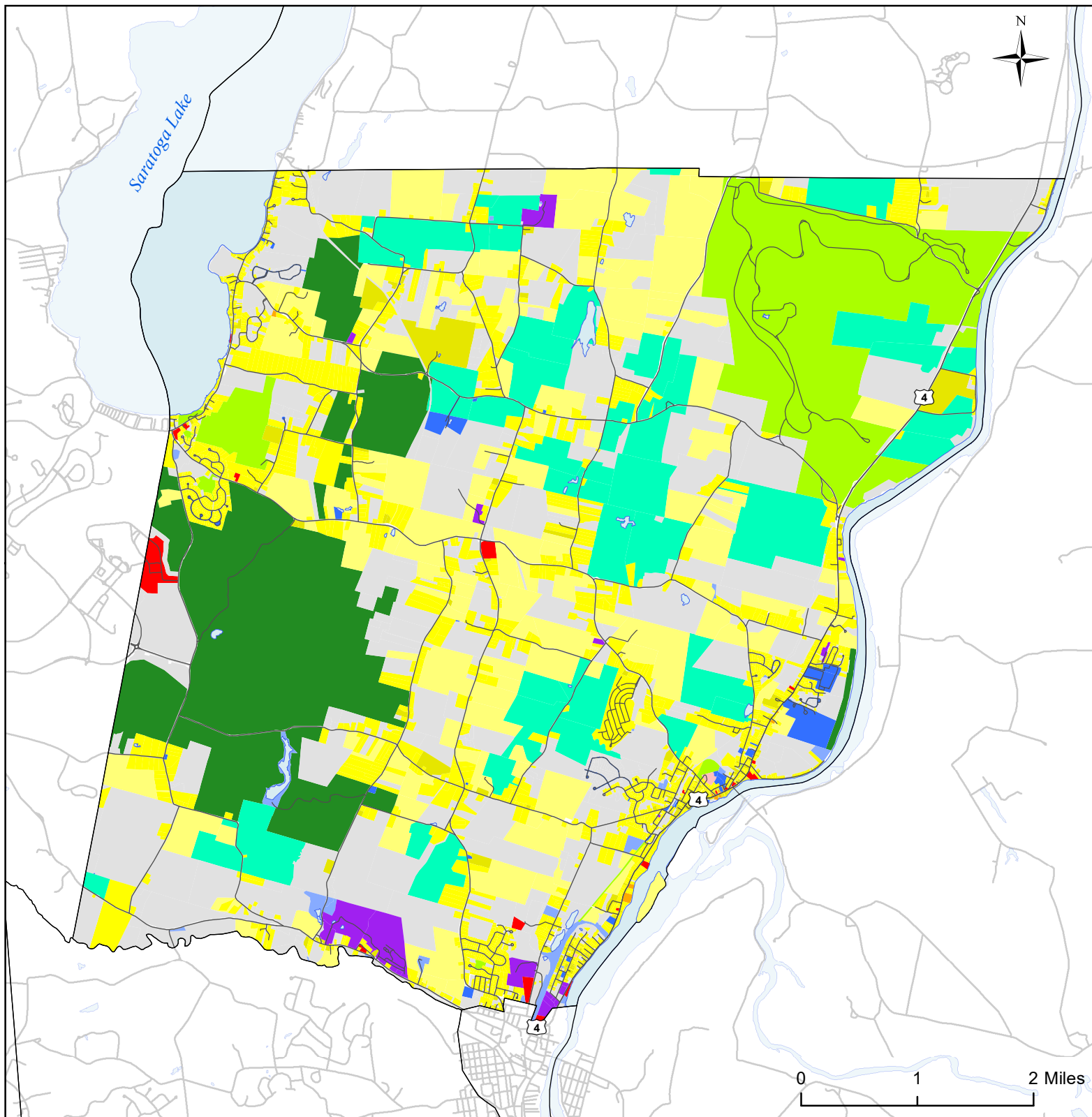
Greenhouse Gas Emissions by Sector



Per capita emissions (MTCO₂e*)

Town of Stillwater	10
Saratoga County	14
Capital District	15

Source: Capital District 2010 Regional GHG Inventory
*Metric Tons Carbon Dioxide Equivalent



Town of Stillwater, NY Land Use



Source: Saratoga County Real Property Services, 2016

Land Use

■ Agricultural

■ Outdoor Recreation

■ Wild, Forested and
Conservation Lands

■ Commercial

■ Recreation and
Entertainment

■ Industrial

■ Community Services

■ Mixed-Use

■ Single Family

■ Multi-Family

■ Large Lot Residential

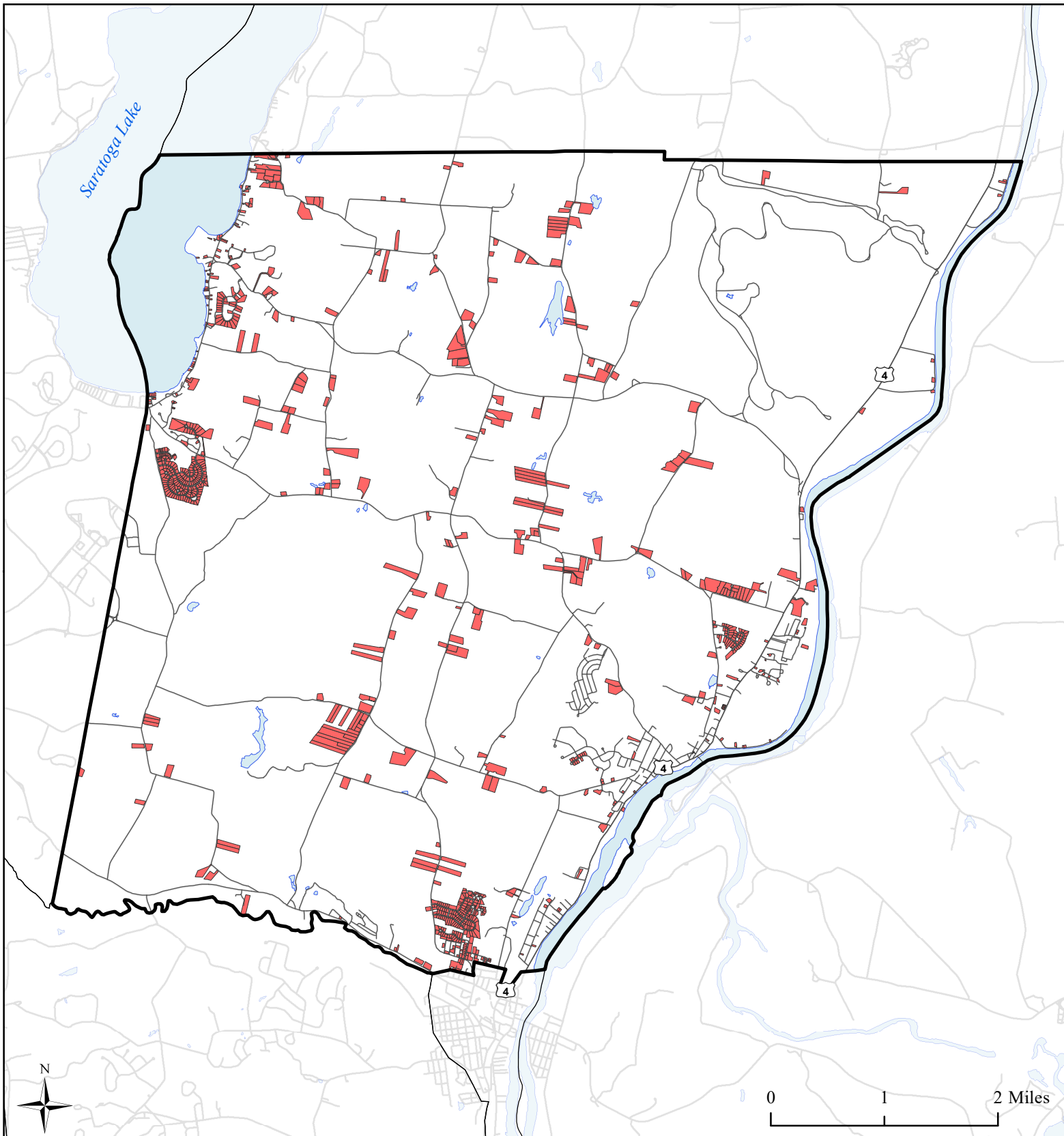
■ Public Services and
Utilities

■ Vacant Land

Municipal Boundaries

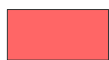
■ Water Bodies


— Roads

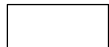


Town of Stillwater, NY **Single Family Homes Built** **1995-2015**



 Single Family Homes Built 1995-2015

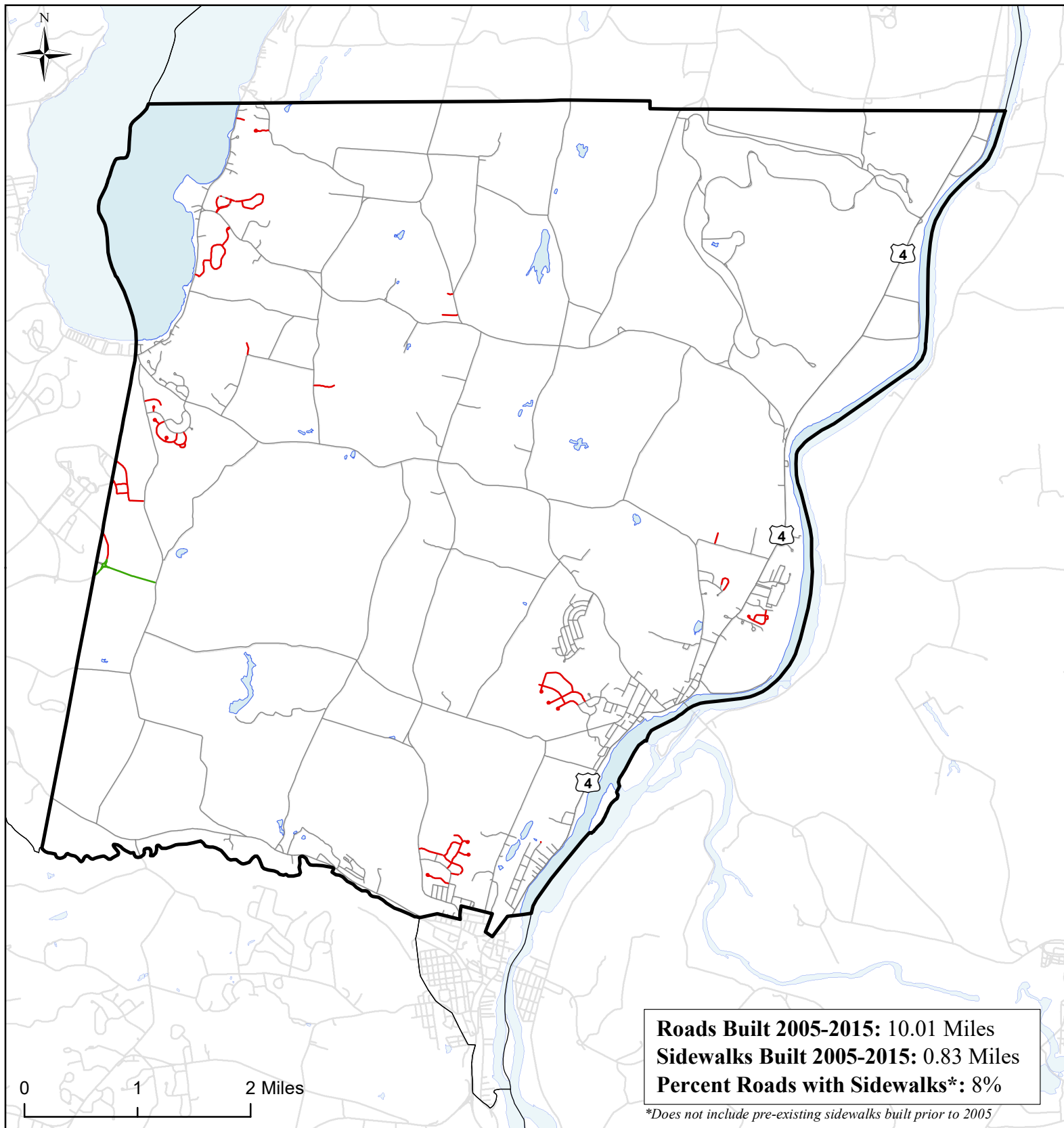
 Town of Stillwater

 Municipal Boundaries

 Water Bodies

 Roads

Source: Saratoga County tax parcel data, 2016



Town of Stillwater, NY **Roads Built 2005-2015**



**Roads Built
2005-2015**

— Sidewalk

— No Sidewalk

▬ Town of Stillwater

▬ Municipal
Boundaries

▬ Water Bodies

▬ Roads Built Prior
to 2005

Source: NYS GIS Clearinghouse, GIS Program Office