



# Community Growth Profile

## Town of Stephentown, NY



The following Community Growth Profile provides information regarding development patterns in the Town of Stephentown, Rensselaer County, NY. This report includes a current land use map, a map showing single family homes built in the last 20 years and new roads built over the last ten years. Also included are population and population projections, housing units, and greenhouse gas emissions data.

### Population/Projections

1980	1990	2000	2010	2020	2030	2040	2050
2,031	2,521	2,873	2,903	2,978	3,040	3,093	3,139

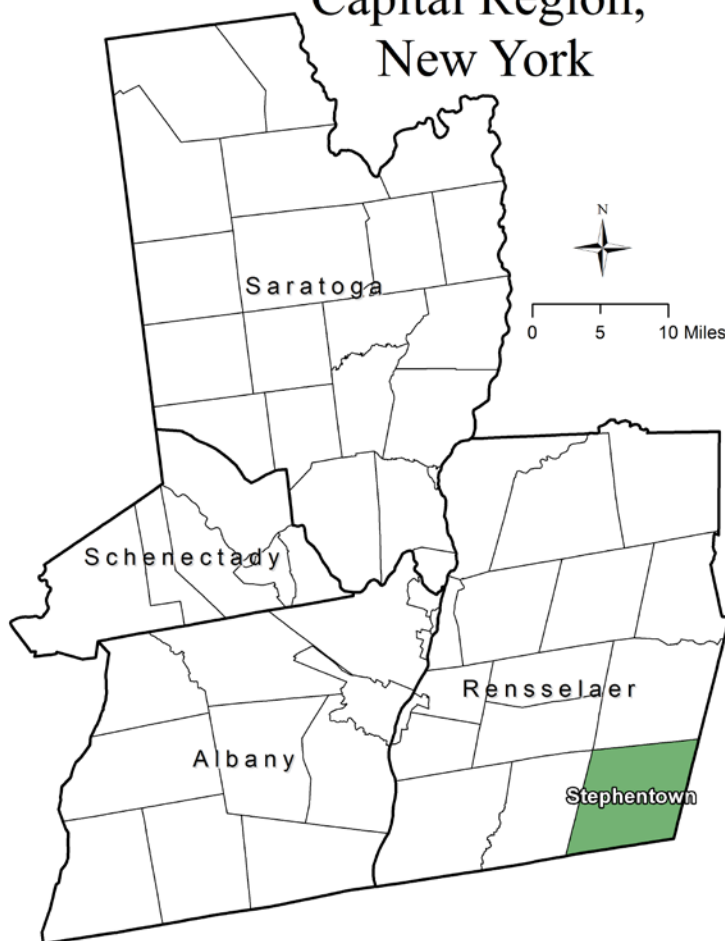
Source: U.S. Census 1980, 1990, 2000, 2010 ; CDRPC Projections

### Housing Units 1980-2015

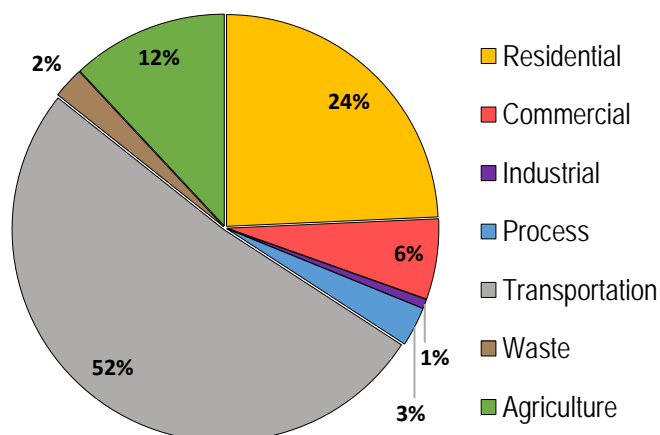
	1980	1990	2000	2010	2015
Total Housing Units	899	1,242	1,339	1,482	1,503

Source: U.S. Census 1980, 1990, 2000, 2010; U.S. Census Building Permit Survey 2011-15

### Capital Region, New York



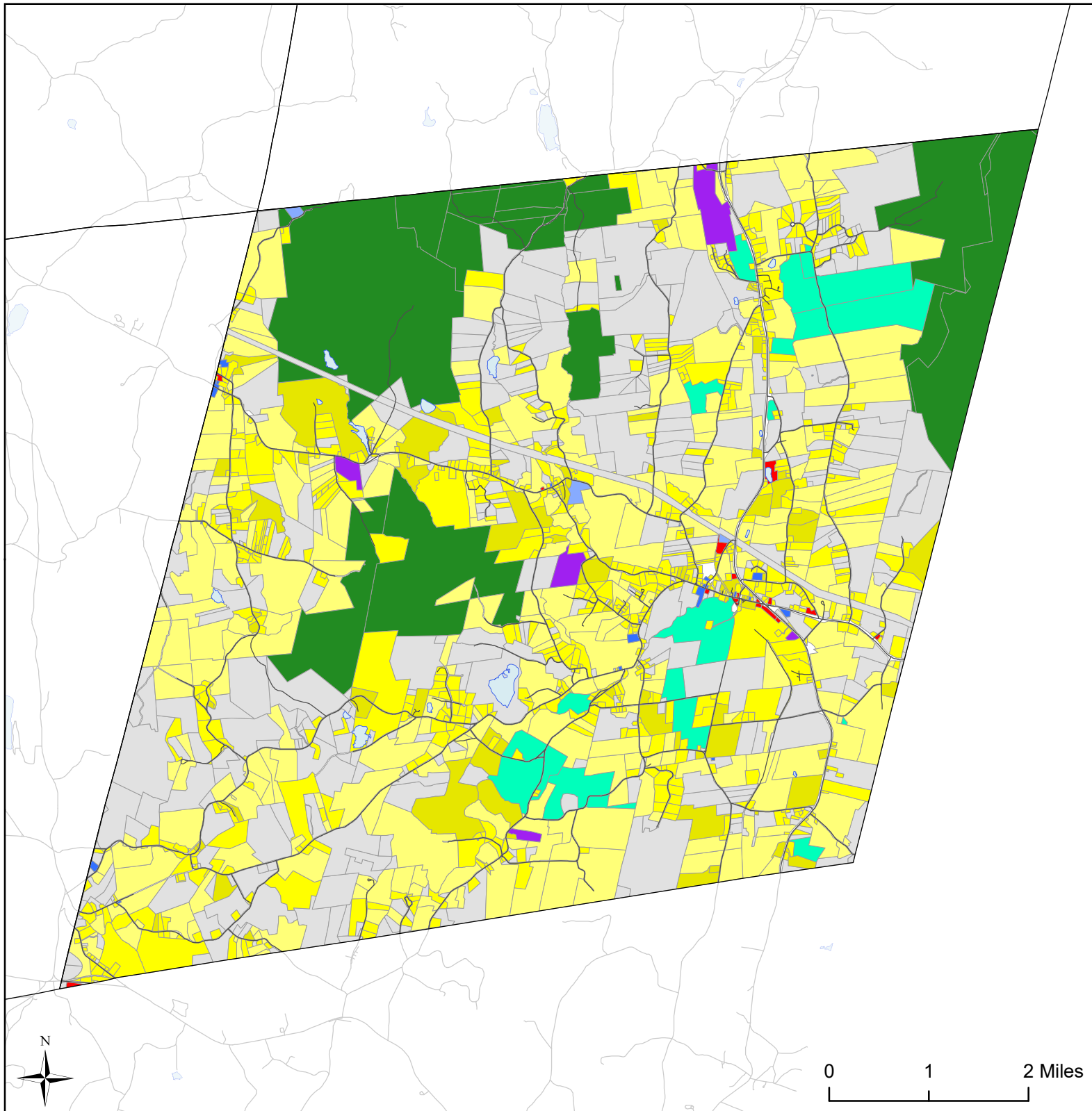
### Greenhouse Gas Emissions by Sector



### Per capita emissions (MTCO<sub>2</sub>e\*)

Town of Stephentown	13
Rensselaer County	11
Capital District	15

Source: Capital District 2010 Regional GHG Inventory  
\*Metric Tons Carbon Dioxide Equivalent





## Town of Stephentown, NY Land Use



### Land Use


 Agricultural

 Outdoor Recreation

 Wild, Forested and  
Conservation Lands

 Commercial

 Industrial


 Community Services

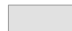
 Mixed-Use

 Single Family

 Multi-Family


 Large Lot Residential

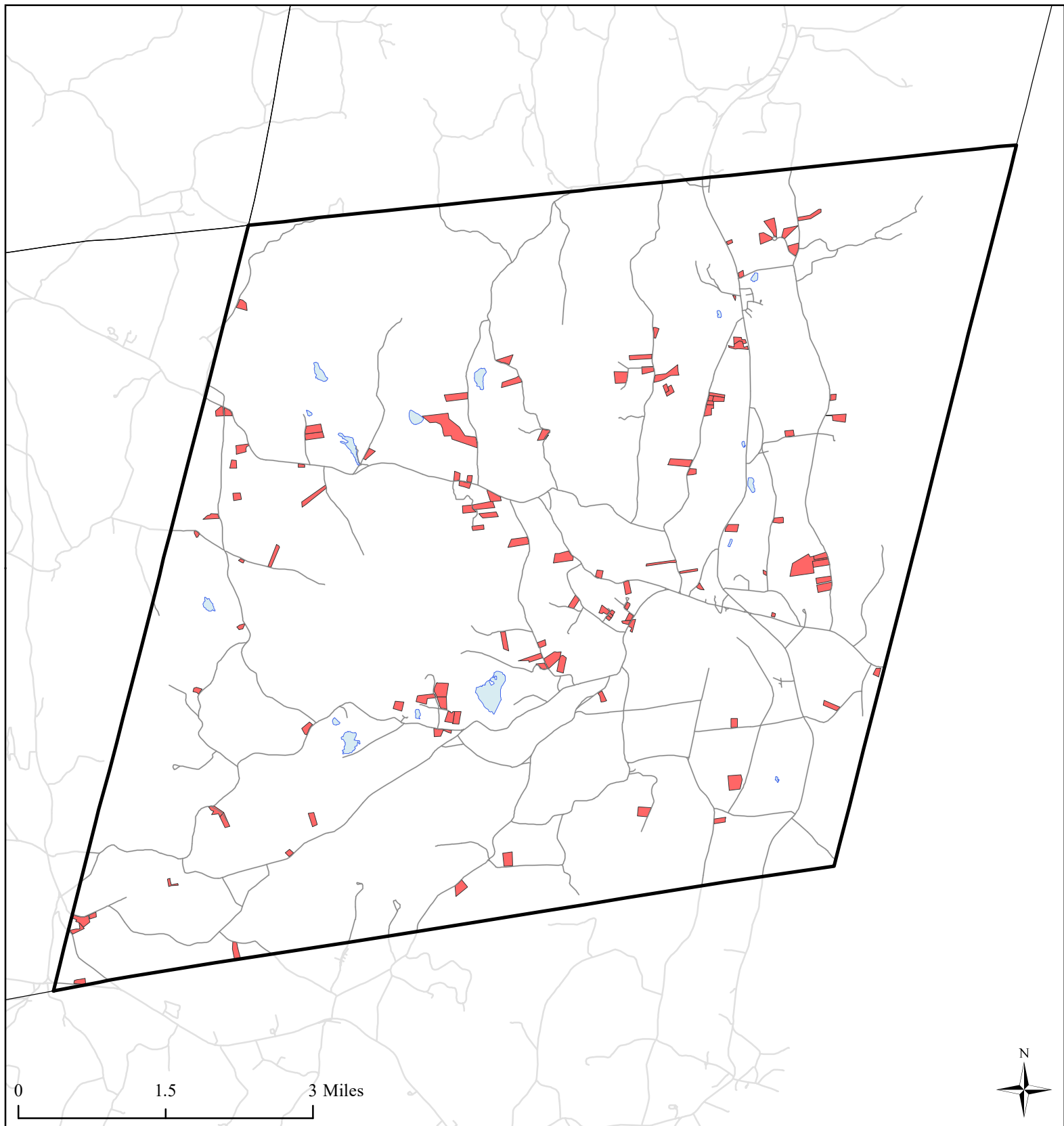
 Public Services and  
Utilities

 Vacant Land

 Water Bodies

 Municipal Boundaries

 Roads



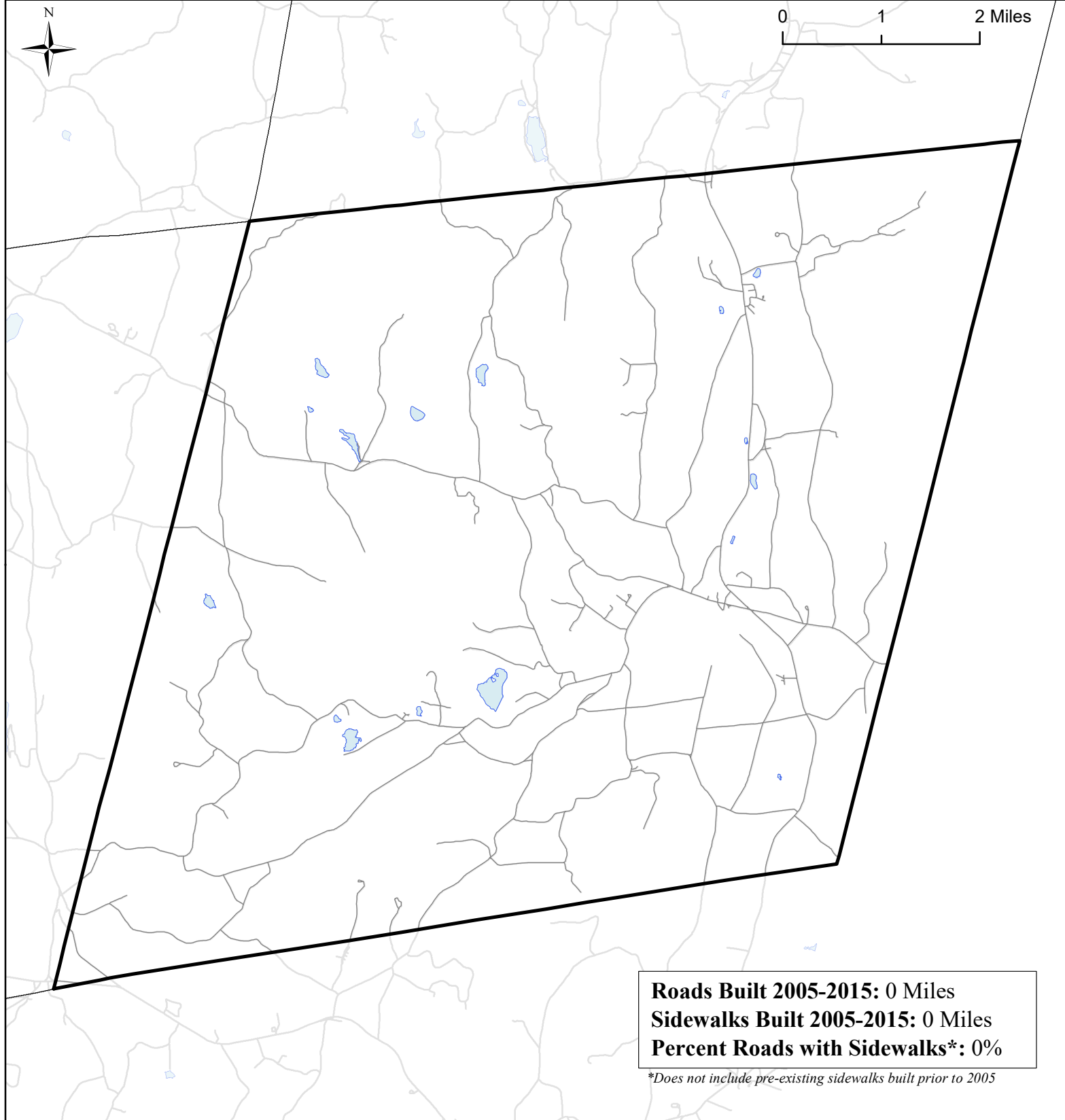
# **Town of Stephentown, NY** **Single Family Homes Built** **1995-2015**



- Single Family Homes Built 1995-2015
- Stephentown Boundary
- Municipal Boundaries
- Water Bodies
- Roads



0 1 2 Miles





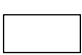

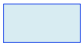

**Roads Built 2005-2015: 0 Miles**  
**Sidewalks Built 2005-2015: 0 Miles**  
**Percent Roads with Sidewalks\*: 0%**

*\*Does not include pre-existing sidewalks built prior to 2005*

# Town of Stephentown, NY

## Roads Built 2005-2015



- |  |   |
|--|---|
| <b>Roads Built 2005-2015</b>   |  Town of Stephentown       |
|  Sidewalk    |  Municipal Boundaries      |
|  No Sidewalk |  Water Bodies              |
|  |  Roads Built Prior to 2005 |