



Community Growth Profile

Town of Schodack, NY



The following Community Growth Profile provides information regarding development patterns in the Town of Schodack, Rensselaer County, NY. This report includes a current land use map, a map showing single family homes built in the last 20 years and new roads built over the last ten years. Also included are population and population projections, housing units, and greenhouse gas emissions data.

Population/Projections

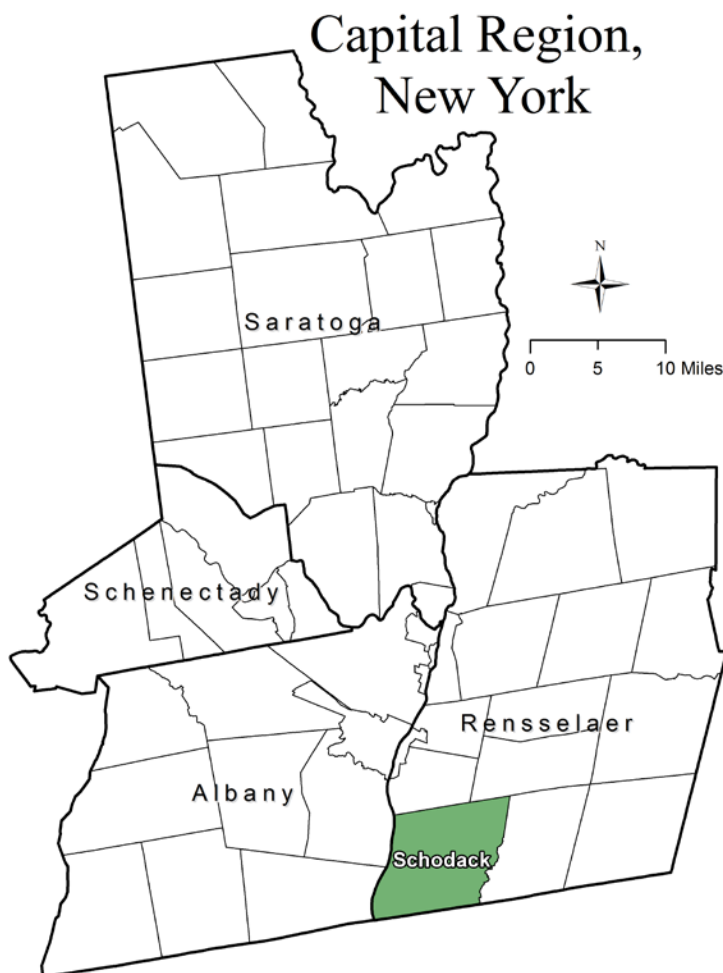
1980	1990	2000	2010	2020	2030	2040	2050
11,345	11,839	12,536	12,794	12,960	13,099	13,173	13,314

Source: U.S. Census 1980, 1990, 2000, 2010 ; CDRPC Projections

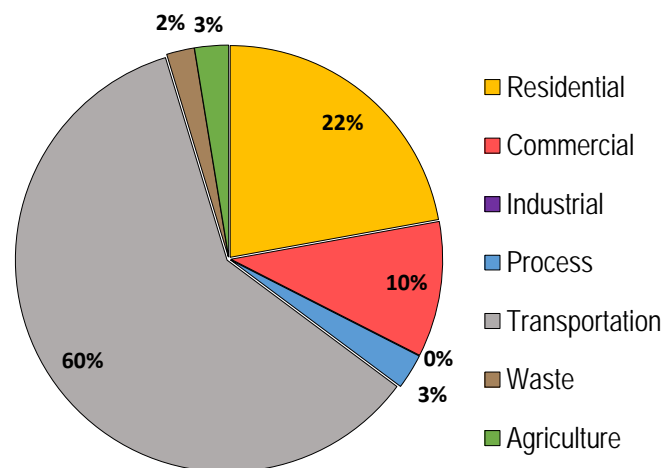
Housing Units 1980-2015

	1980	1990	2000	2010	2015
Total Housing Units	4,052	4,530	4,942	5,372	5,540

Source: U.S. Census 1980, 1990, 2000, 2010; U.S. Census Building Permit Survey 2011-15



Greenhouse Gas Emissions by Sector

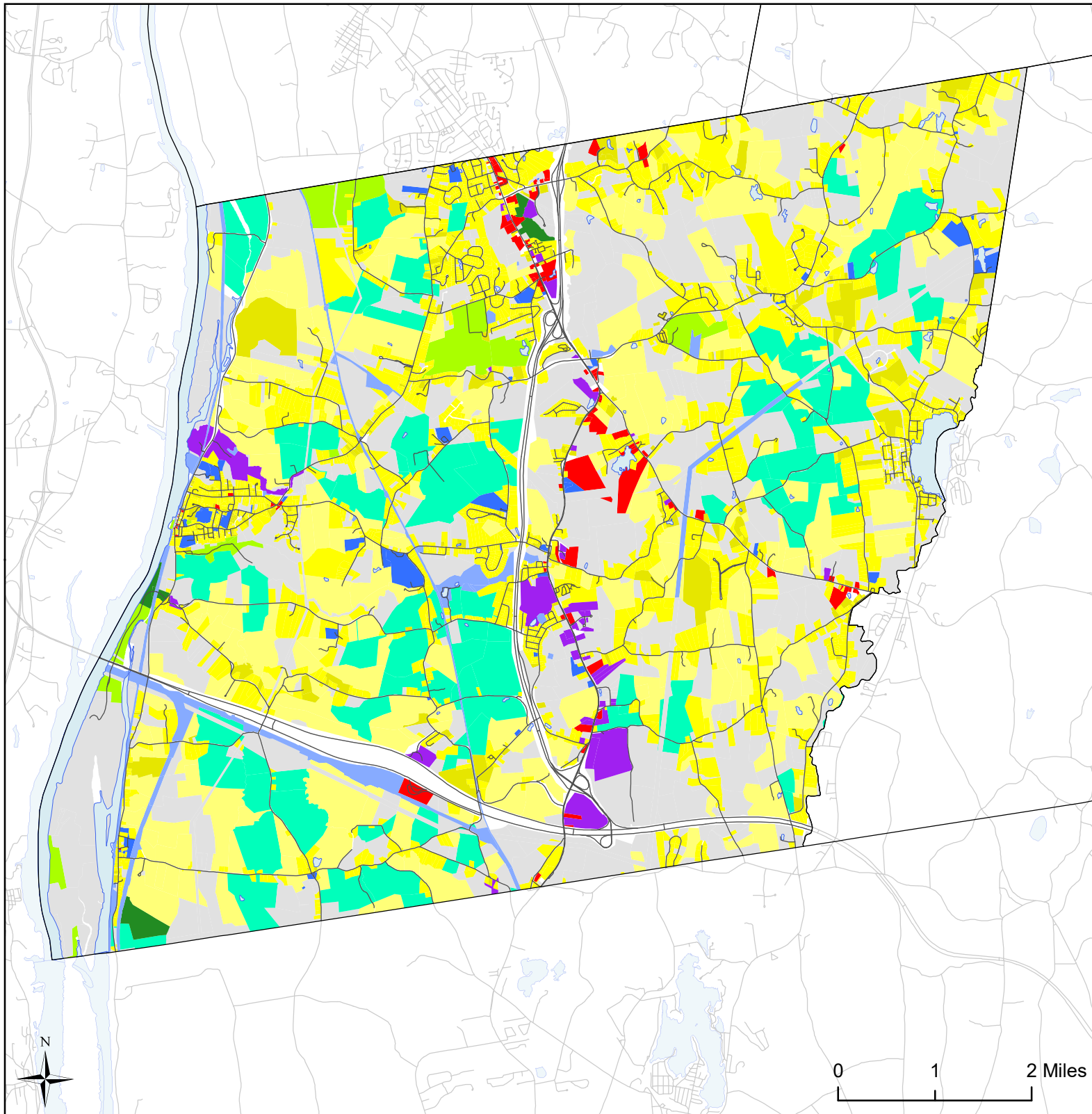


Per capita emissions (MTCO₂e*)

Town of Schodack	15
Rensselaer County	11
Capital District	15

Source: Capital District 2010 Regional GHG Inventory

*Metric Tons Carbon Dioxide Equivalent





Town of Schodack, NY Land Use



Land Use


 Agricultural

 Outdoor Recreation

 Wild, Forested and
Conservation Lands

 Commercial


 Industrial

 Community Services


 Mixed-Use

 Single Family

 Multi-Family


 Large Lot Residential

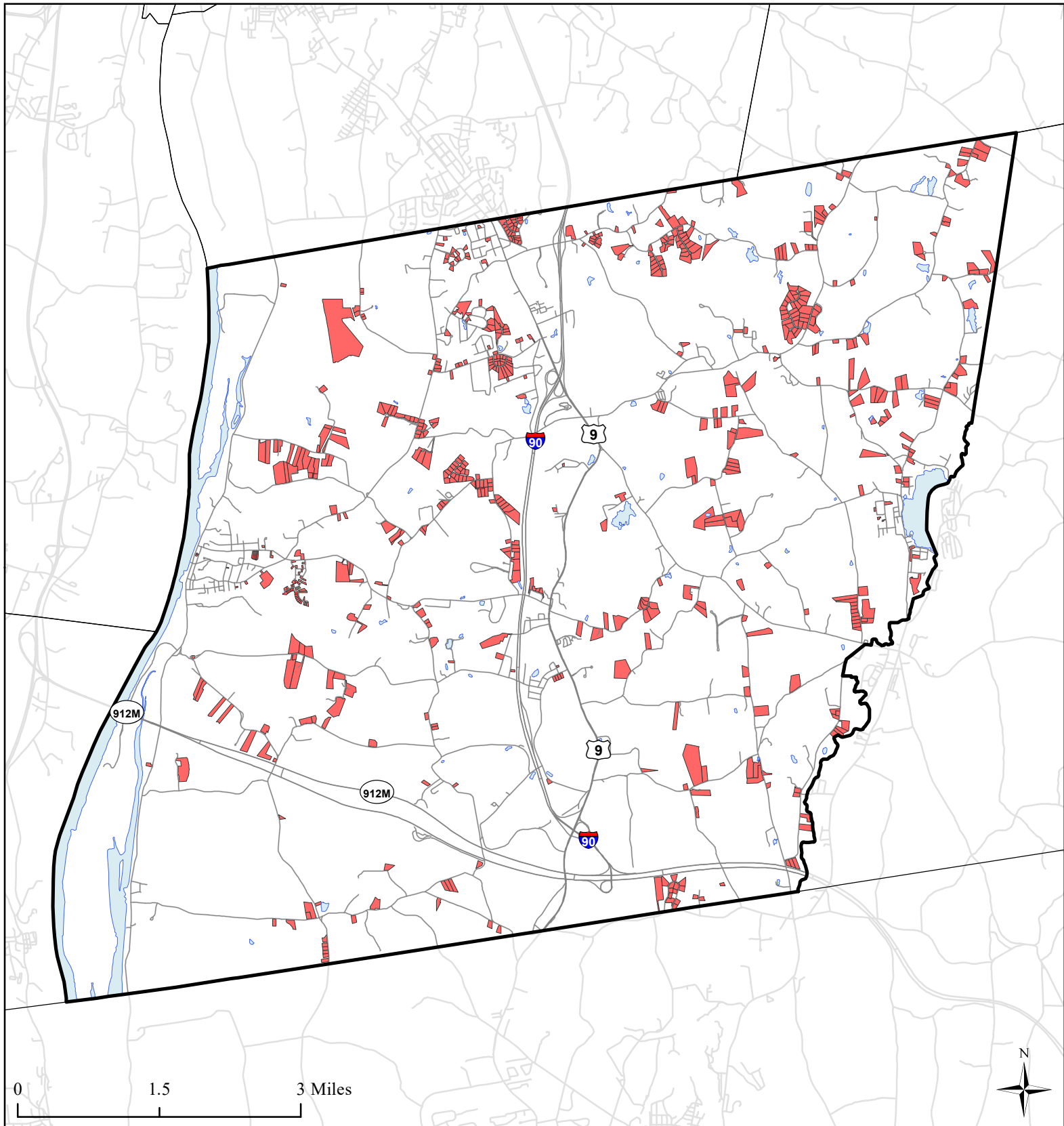
 Public Services and
Utilities

 Vacant Land

 Water Bodies

 Municipal Boundaries

 Roads



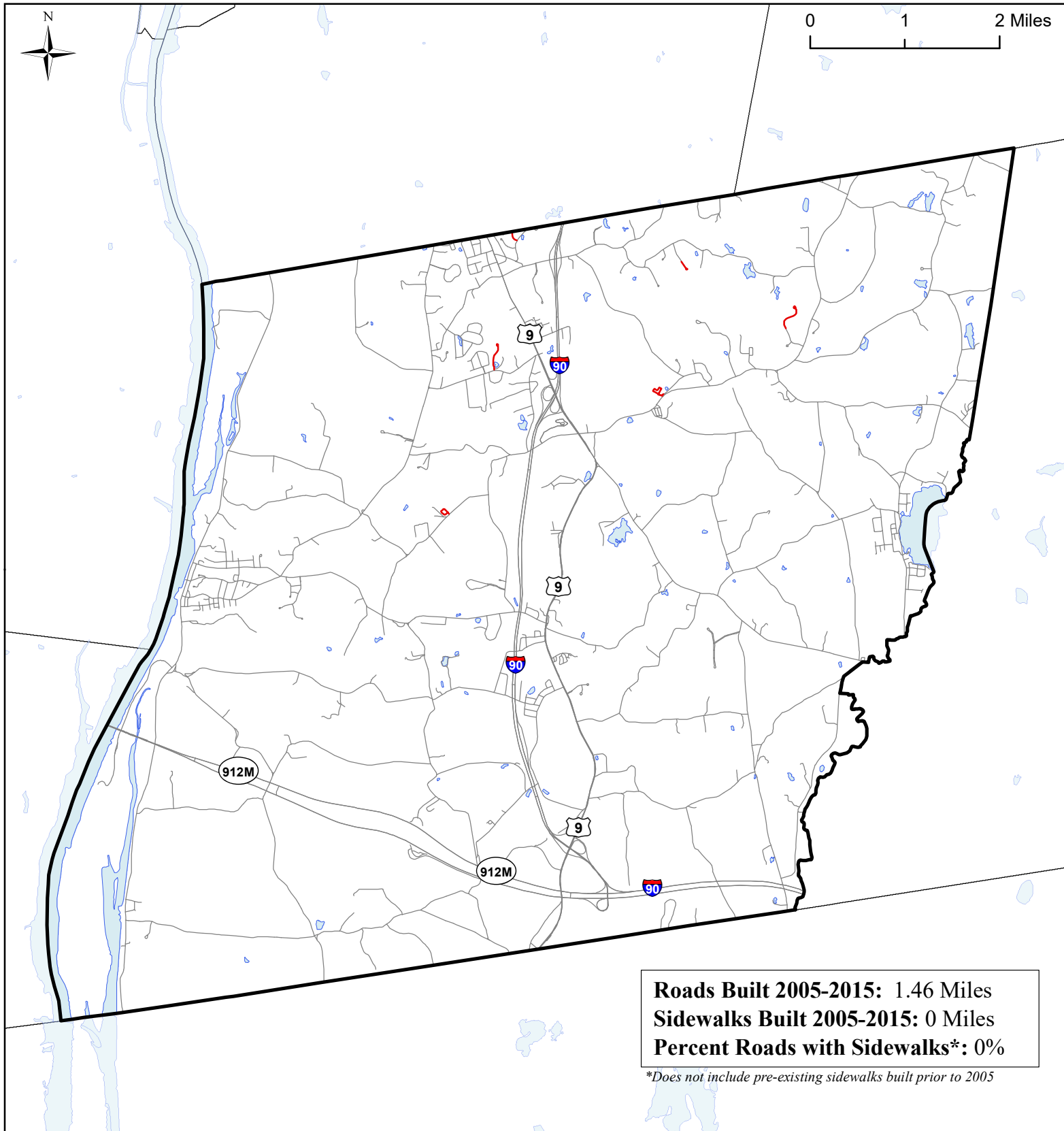
Town of Schodack, NY **Single Family Homes Built** **1995-2015**



- Single Family Homes Built 1995-2015
- Schodack Boundary
- Municipal Boundaries
- Water Bodies
- Roads



0 1 2 Miles



Roads Built 2005-2015: 1.46 Miles
Sidewalks Built 2005-2015: 0 Miles
Percent Roads with Sidewalks*: 0%

**Does not include pre-existing sidewalks built prior to 2005*

Town of Schodack, NY Roads Built 2005-2015



**Roads Built
2005-2015**

— Sidewalk

— No Sidewalk

▭ Town of Schodack

▭ Municipal
Boundaries

▭ Water Bodies

— Roads Built Prior
to 2005

Source: NYS GIS Clearinghouse, GIS Program Office