



# Community Growth Profile

## Town of Schaghticoke, NY



The following Community Growth Profile provides information regarding development patterns in the Town of Schaghticoke, Rensselaer County, NY. This report includes a current land use map, a map showing single family homes built in the last 20 years and new roads built over the last ten years. Also included are population and population projections, housing units, and greenhouse gas emissions data.

### Population/Projections

1980	1990	2000	2010	2020	2030	2040	2050
7,094	7,574	7,456	7,679	7,803	7,909	7,992	8,062

Source: U.S. Census 1980, 1990, 2000, 2010 ; CDRPC Projections

### Housing Units 1980-2015

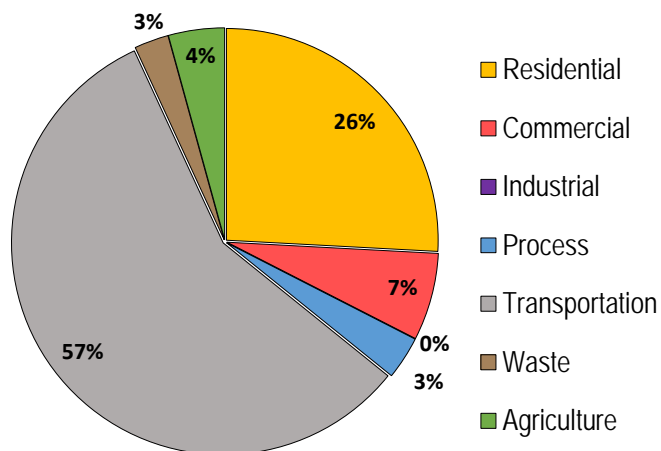
	1980	1990	2000	2010	2015
Total Housing Units	2,331	2,660	2,823	3,040	---

Source: U.S. Census 1980, 1990, 2000, 2010; U.S. Census Building Permit Survey 2011-15

### Capital Region, New York



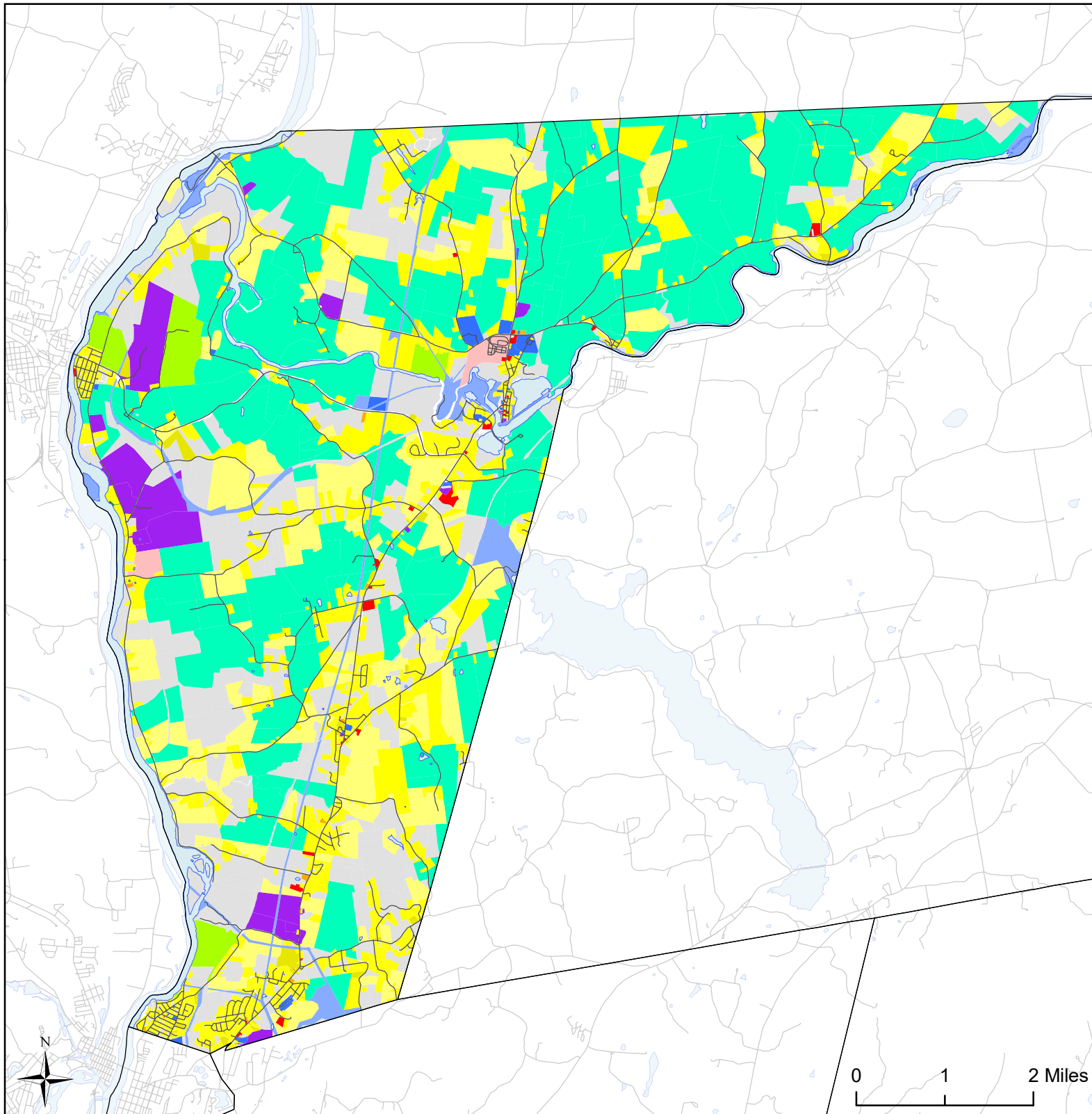
### Greenhouse Gas Emissions by Sector



### Per capita emissions (MTCO<sub>2</sub>e\*)

Town of Schaghticoke	12
Rensselaer County	11
Capital District	15

Source: Capital District 2010 Regional GHG Inventory  
\*Metric Tons Carbon Dioxide Equivalent





## Town of Schaghticoke, NY Land Use




### Land Use

 Agricultural


 Outdoor Recreation

 Wild, Forested and Conservation Lands

 Commercial

 Recreation and Entertainment

 Industrial


 Community Services

 Mixed-Use

 Single Family

 Multi-Family


 Large Lot Residential

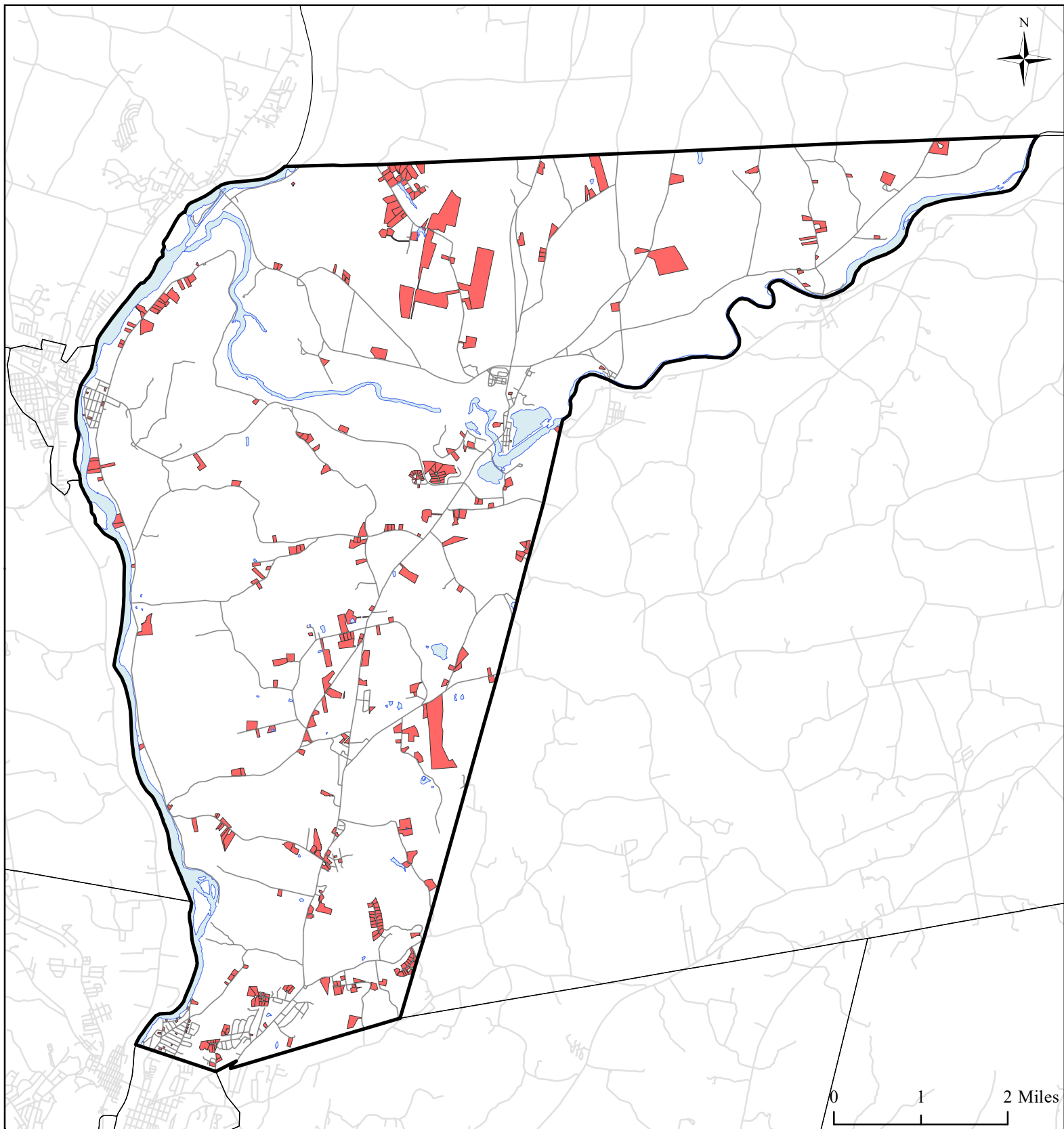
 Public Services and Utilities

 Vacant Land

 Municipal Boundaries

 Water Bodies

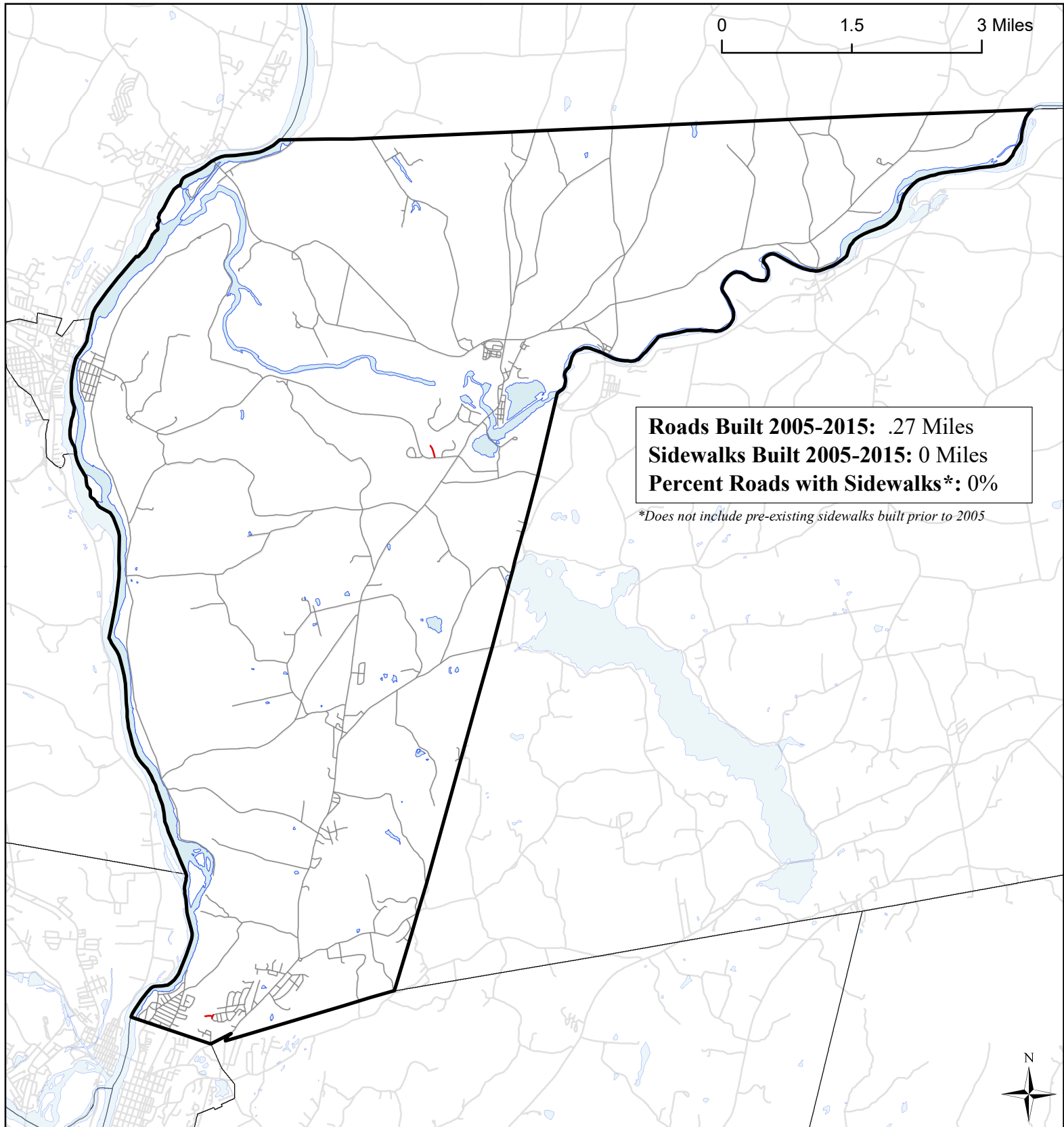
 Roads



# **Town of Schaghticoke, NY** **Single Family Homes Built** **1995-2015**



- Single Family Homes Built 1995-2015
- Schaghticoke Boundary
- Municipal Boundaries
- Water Bodies
- Roads



# Town of Schaghticoke, NY

## Roads Built 2005-2015



### Roads Built 2005-2015

- Sidewalk
- No Sidewalk

- Town of Schaghticoke
- Municipal Boundaries
- Water Bodies
- Roads Built Prior to 2005