



Community Growth Profile

Town of Sand Lake, NY



The following Community Growth Profile provides information regarding development patterns in the Town of Sand Lake, Rensselaer County, NY. This report includes a current land use map, a map showing single family homes built in the last 20 years and new roads built over the last ten years. Also included are population and population projections, housing units, and greenhouse gas emissions data.

Population/Projections

1980	1990	2000	2010	2020	2030	2040	2050
7,022	7,642	7,987	8,530	8,794	9,043	9,199	9,342

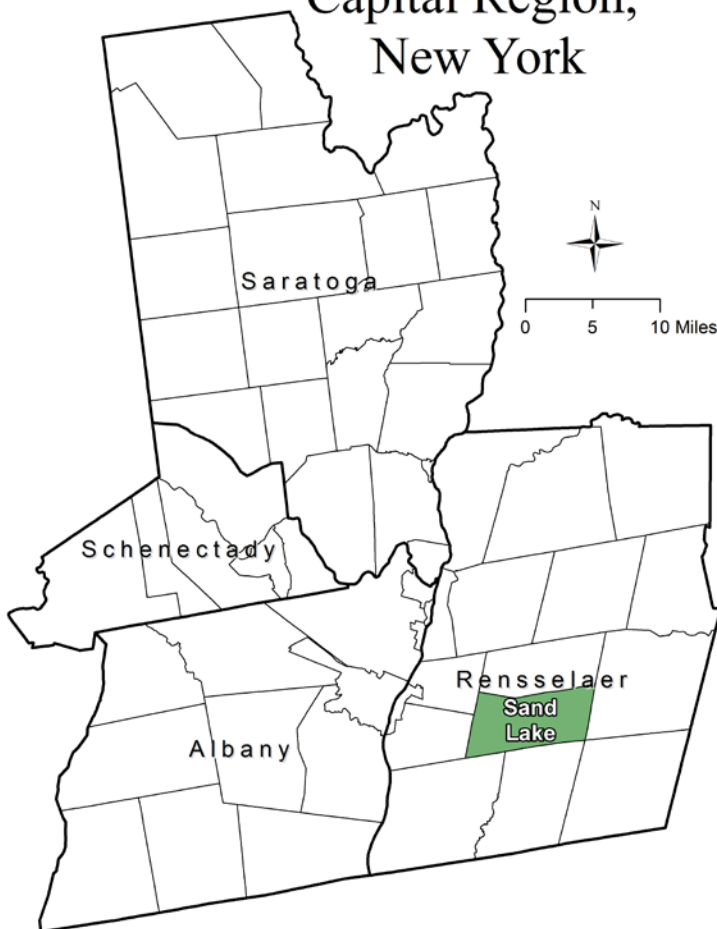
Source: U.S. Census 1980, 1990, 2000, 2010 ; CDRPC Projections

Housing Units 1980-2015

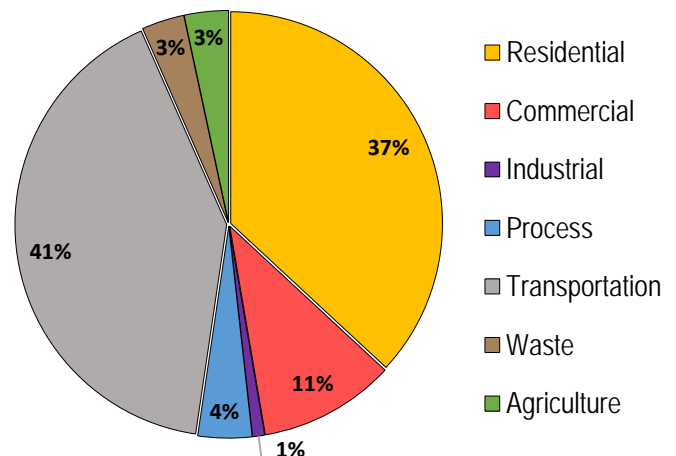
	1980	1990	2000	2010	2015
Total Housing Units	2,708	3,120	3,277	3,673	3,694

Source: U.S. Census 1980, 1990, 2000, 2010; U.S. Census Building Permit Survey 2011-15

Capital Region, New York



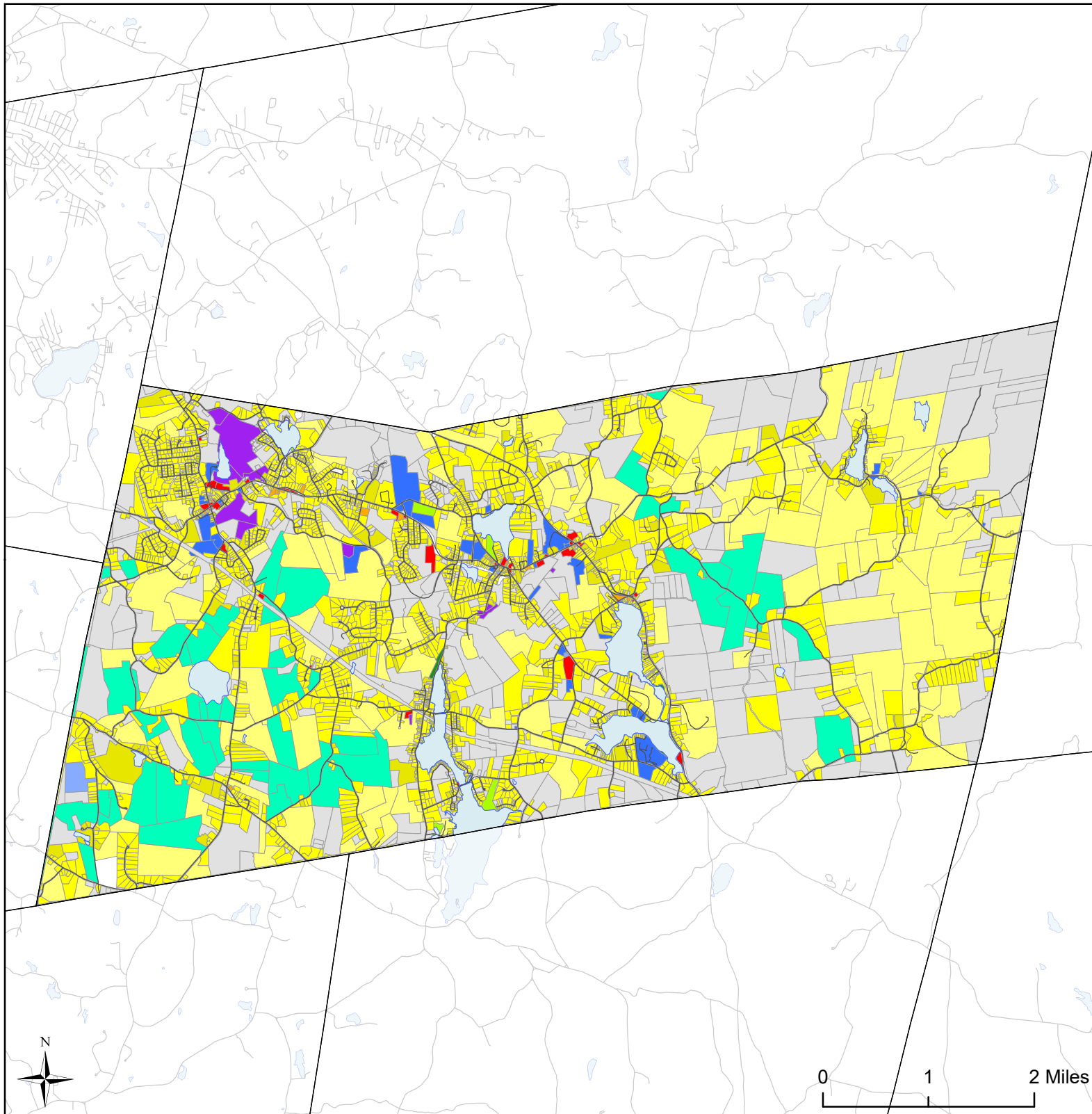
Greenhouse Gas Emissions by Sector



Per capita emissions (MTCO₂e*)

Town of Sand Lake	9
Rensselaer County	11
Capital District	15

Source: Capital District 2010 Regional GHG Inventory
*Metric Tons Carbon Dioxide Equivalent



Town of Sandlake, NY Land Use

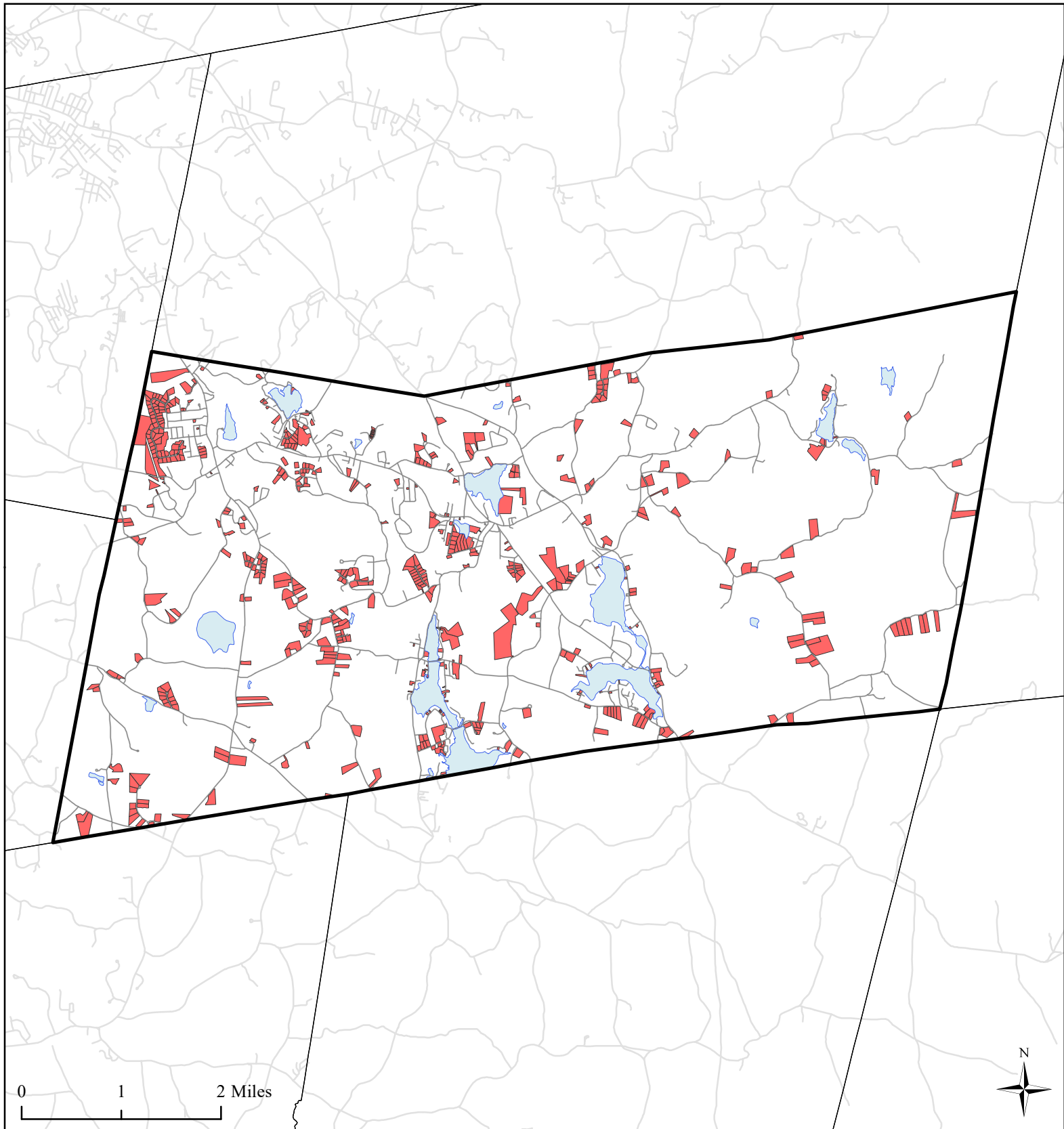


Land Use

- Agricultural
- Outdoor Recreation
- Wild, Forested and Conservation Lands
- Commercial

- Industrial
- Community Services
- Mixed-Use
- Single Family
- Multi-Family
- Large Lot Residential

- Public Services and Utilities
- Vacant Land
- Water Bodies
- Municipal Boundaries
- Roads



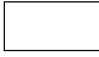




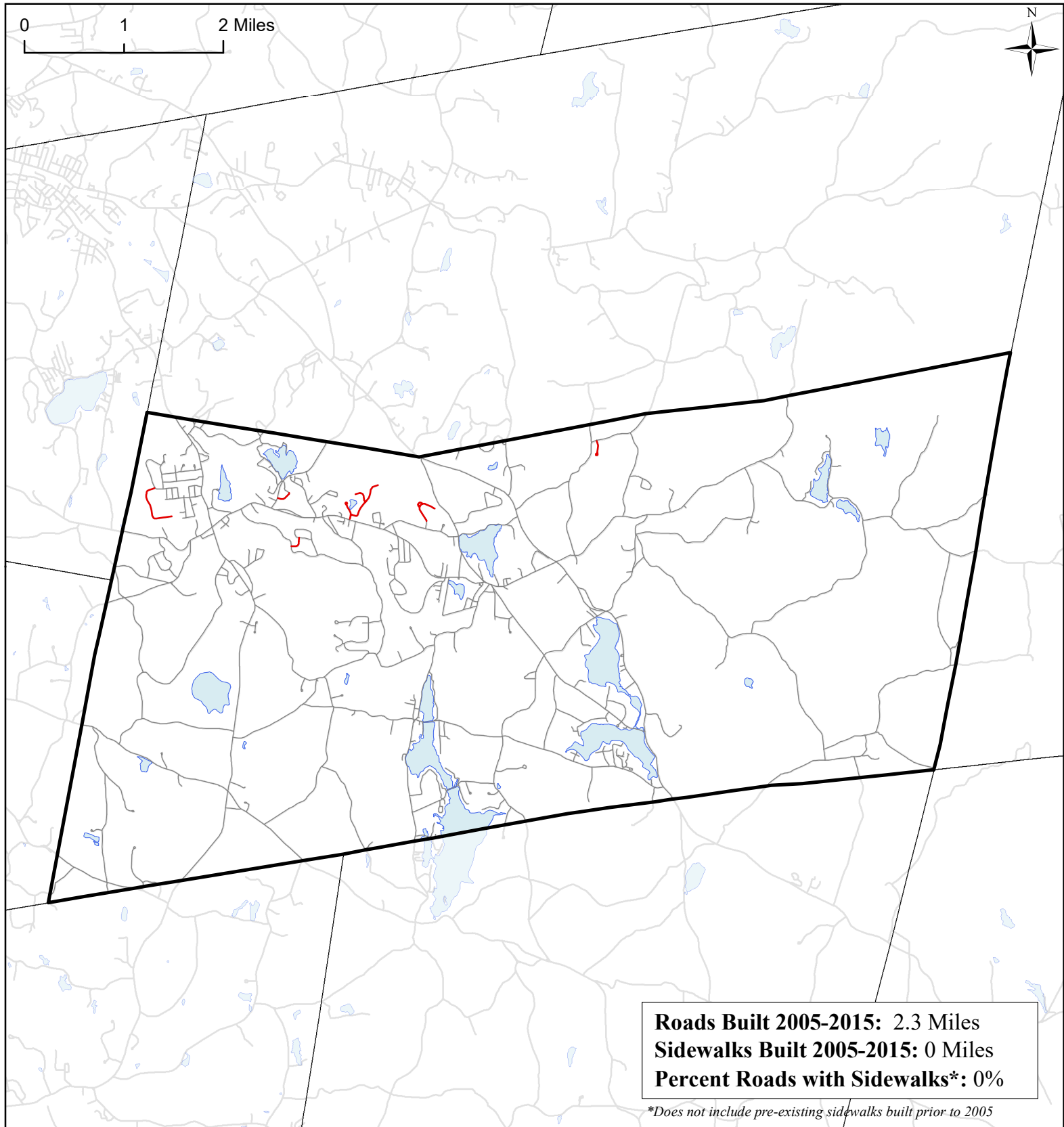
Town of Sand Lake, NY

Single Family Homes Built

1995-2015



-  Single Family Homes Built 1995-2015
-  Sand Lake Boundary
-  Municipal Boundaries
-  Water Bodies
-  Roads



Town of Sand Lake, NY

Roads Built 2005-2015



Roads Built 2005-2015

- Sidewalk
- No Sidewalk

- Town of Sand Lake
- Municipal Boundaries
- Water Bodies
- Roads Built Prior to 2005