



# Community Growth Profile

## Town of Rensselaerville, NY



The following Community Growth Profile provides information regarding development patterns in the Town of Rensselaerville, Albany County, NY. This report includes a current land use map, a map showing single family homes built in the last 20 years and new roads built over the last ten years. Also included are population and population projections, housing units, and greenhouse gas emissions data.

### Population/Projections

1980	1990	2000	2010	2020	2030	2040	2050
1,780	1,990	1,915	1,843	1,882	1,902	1,874	1,860

Source: U.S. Census 1980, 1990, 2000, 2010 ; CDRPC Projections

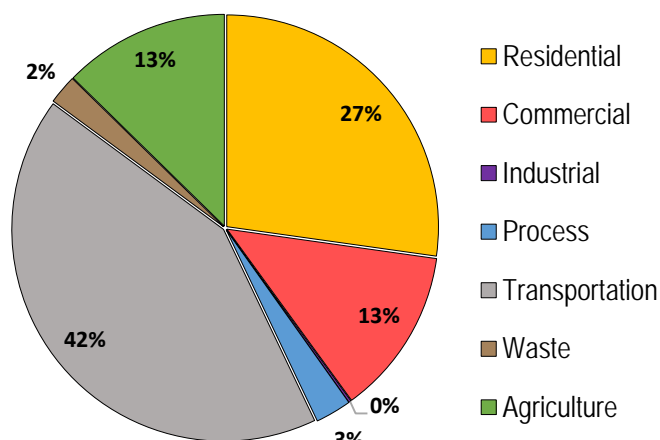
### Housing Units 1980-2015

	1980	1990	2000	2010	2015
Total Housing Units	1,060	1,213	1,187	1,271	1,284

Source: U.S. Census 1980, 1990, 2000, 2010; U.S. Census Building Permit Survey 2011-15



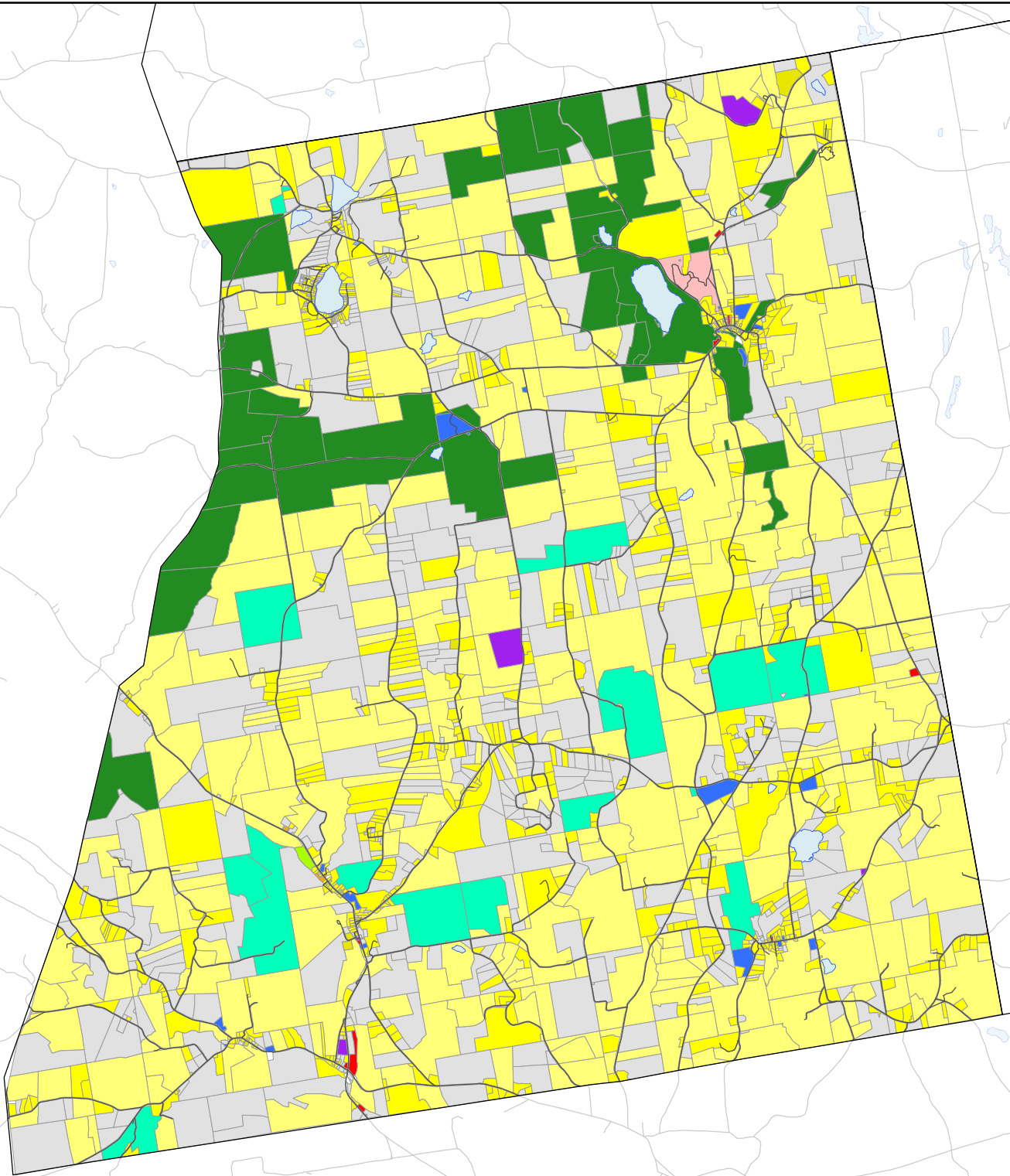
### Greenhouse Gas Emissions by Sector



### Per capita emissions (MTCO<sub>2</sub>e\*)

Town of Rensselaerville	14
Albany County	21
Capital District	15

Source: Capital District 2010 Regional GHG Inventory  
\*Metric Tons Carbon Dioxide Equivalent



## Town of Rensselaerville, NY Land Use

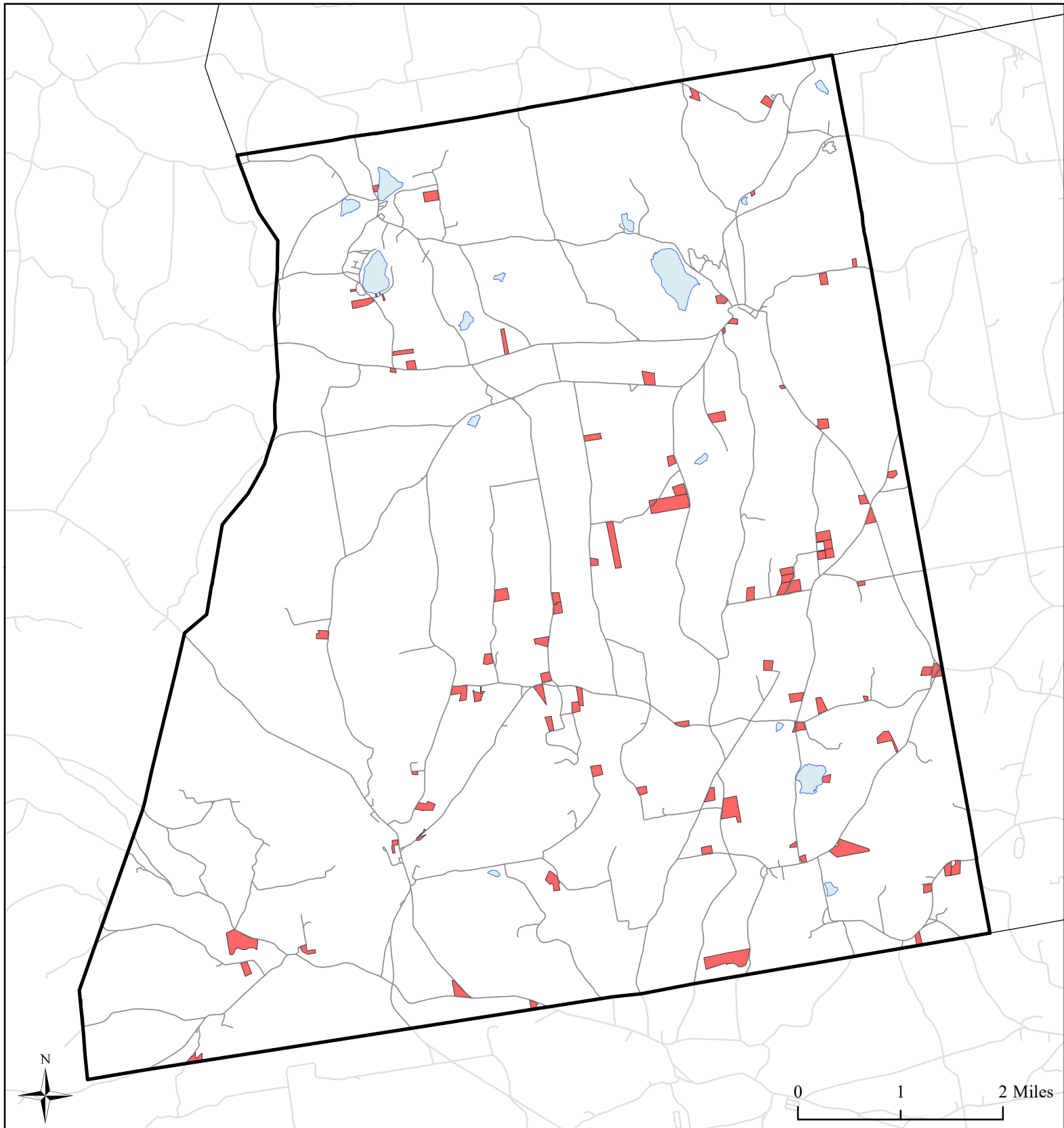


### Land Use

- Agricultural
- Outdoor Recreation
- Wild, Forested and Conservation Lands
- Commercial



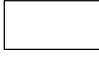
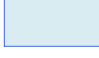

- Recreation and Entertainment
- Industrial
- Community Services
- Mixed-Use
- Single Family
- Multi-Family

- Large Lot Residential
- Public Services and Utilities
- Vacant Land
- Water Bodies
- Municipal Boundaries
- Roads



## Town of Rensselaerville, NY Single Family Homes Built 1995-2015



-  Single Family Homes Built 1995-2015
-  Rensselaerville Boundary
-  Municipal Boundaries
-  Water Bodies
-  Roads

Source: Albany County tax parcel data; NYS GIS Program Office 2016

0 1.25 2.5 Miles



**Roads Built 2005-2015: 0 Miles**  
**Sidewalks Built 2005-2015: 0 Miles**  
**Percent Roads with Sidewalks\*: 0%**

*\*Does not include pre-existing sidewalks built prior to 2005*

# Town of Rensselaerville, NY


## Roads Built 2005-2015



**Roads Built  
2005-2015**


— Sidewalk

— No Sidewalk

 Town of  
Rensselaerville

 Municipal  
Boundaries

 Water Bodies

 Roads Built Prior  
to 2005

Source: NYS GIS Clearinghouse, GIS Program Office