



Community Growth Profile

City of Rensselaer, NY



The following Community Growth Profile provides information regarding development patterns in the City of Rensselaer, Rensselaer County, NY. This report includes a current land use map, a map showing single family homes built in the last 20 years and new roads built over the last ten years. Also included are population and population projections, housing units, and greenhouse gas emissions data.

Population/Projections

1980	1990	2000	2010	2020	2030	2040	2050
9,047	8,255	7,761	9,392	9,531	9,603	9,533	9,513

Source: U.S. Census 1980, 1990, 2000, 2010 ; CDRPC Projections

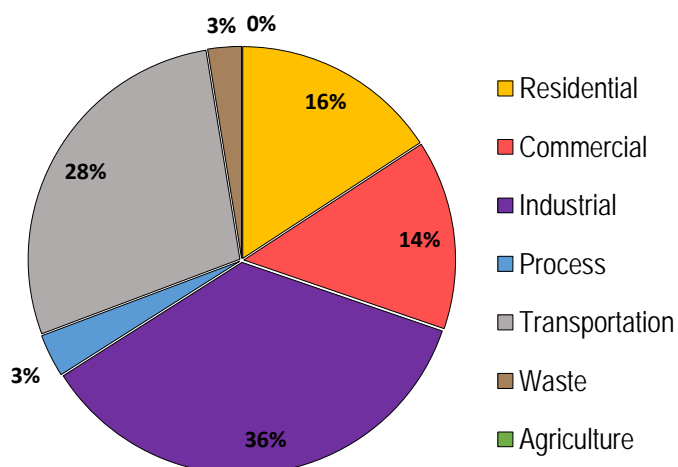
Housing Units 1980-2015

	1980	1990	2000	2010	2015
Total Housing Units	3,588	3,652	3,713	4,695	4,707

Source: U.S. Census 1980, 1990, 2000, 2010; U.S. Census Building Permit Survey 2011-15



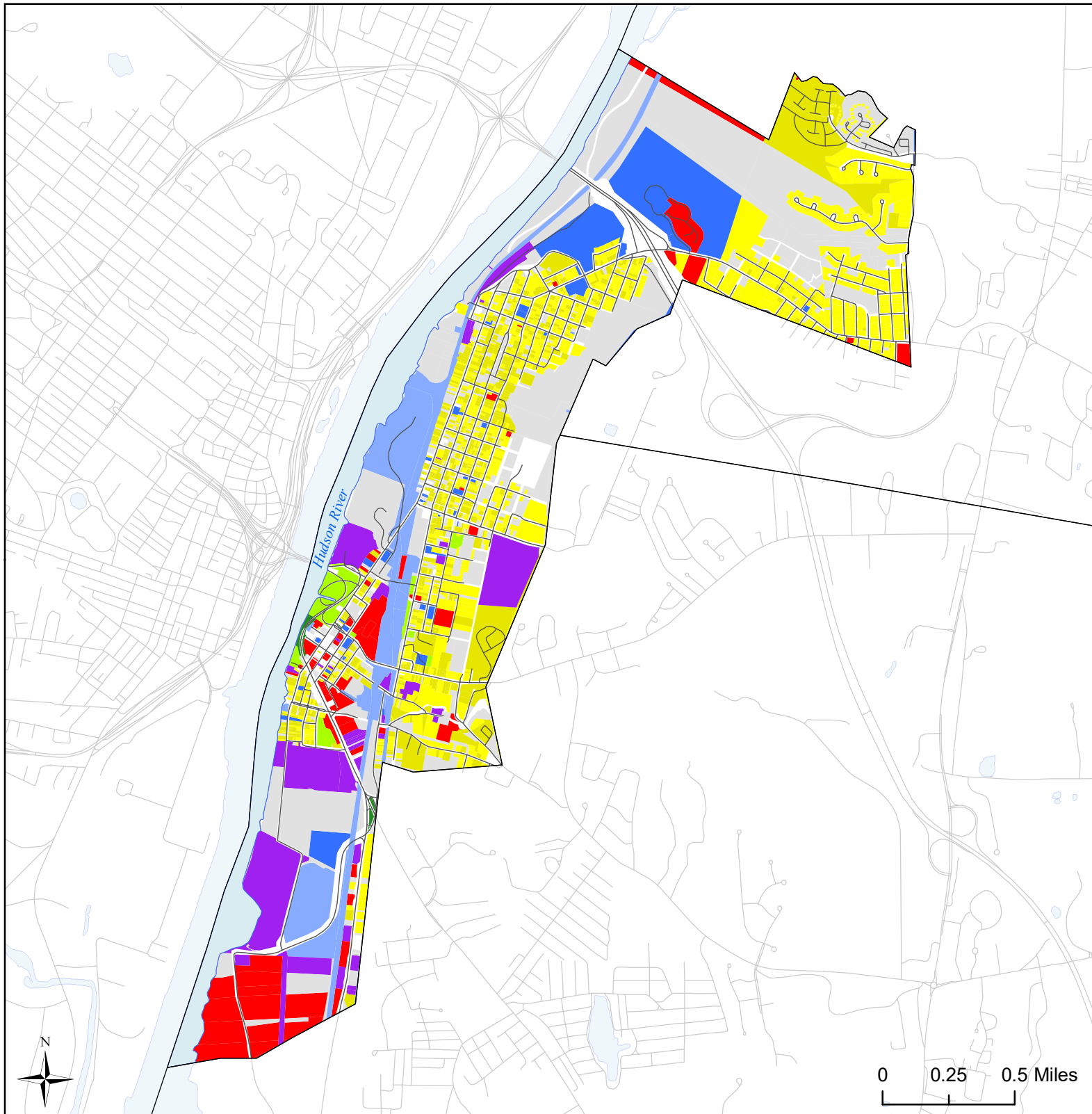
Greenhouse Gas Emissions by Sector



Per capita emissions (MTCO₂e*)

City of Rensselaer	12
Rensselaer County	11
Capital District	15

Source: Capital District 2010 Regional GHG Inventory
*Metric Tons Carbon Dioxide Equivalent

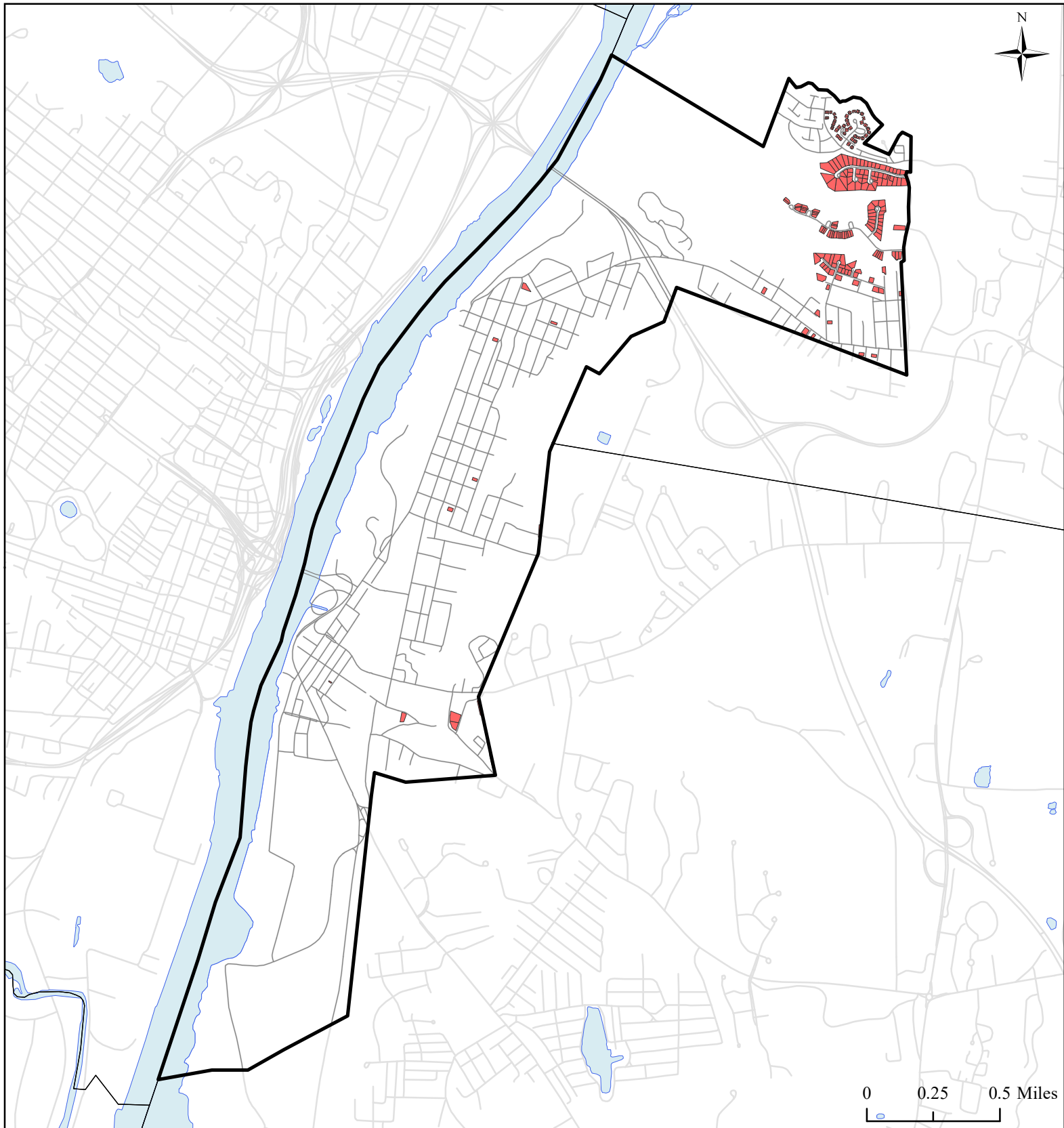


City of Rensselaer, NY Land Use



Land Use		
 Agricultural	 Industrial	 Public Services and Utilities
 Outdoor Recreation	 Community Services	 Vacant Land
 Wild, Forested and Conservation Lands	 Mixed-Use	 Water Bodies
 Commercial	 Single Family	 Municipal Boundaries
	 Multi-Family	 Roads
	 Large Lot Residential	



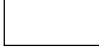
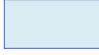

Source: Rensselaer County Bureau of Research & Information Services; NYS GIS Program Office, 2016



City of Rensselaer, NY

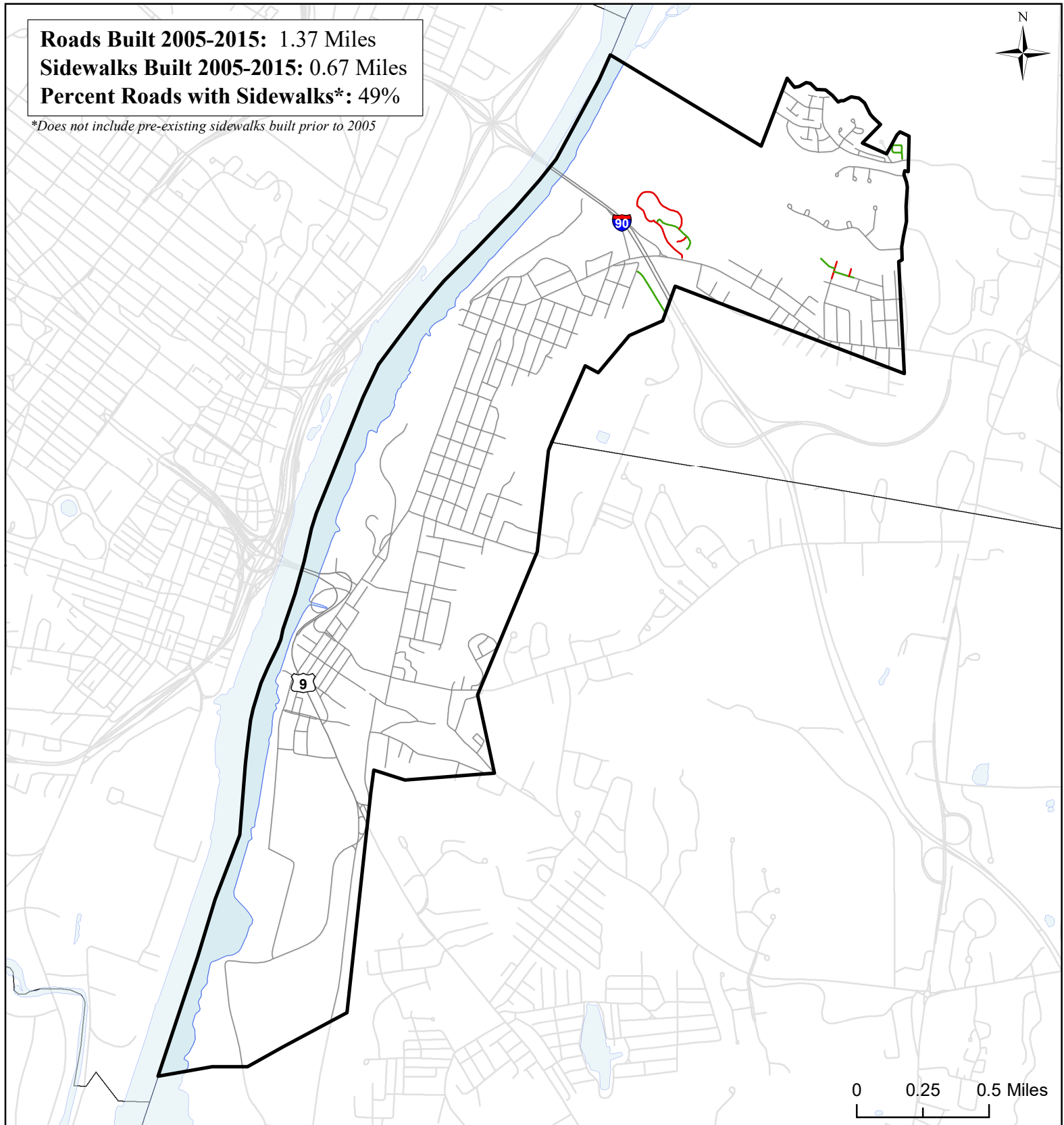
Single Family Homes Built 1995-2015



-  Single Family Homes Built 1995-2015
-  Rensselaer Boundary
-  Municipal Boundaries
-  Water Bodies
-  Roads

Roads Built 2005-2015: 1.37 Miles
Sidewalks Built 2005-2015: 0.67 Miles
Percent Roads with Sidewalks*: 49%

**Does not include pre-existing sidewalks built prior to 2005*





0 0.25 0.5 Miles



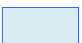

City of Rensselaer, NY

Roads Built 2005-2015



Roads Built 2005-2015

-  Sidewalk
-  No Sidewalk

-  City of Rensselaer
-  Municipal Boundaries
-  Water Bodies
-  Roads Built Prior to 2005

Source: NYS GIS Clearinghouse, GIS Program Office