



Community Growth Profile

Town of Providence, NY



The following Community Growth Profile provides information regarding development patterns in the Town of Providence, Saratoga County, NY. This report includes a current land use map, a map showing single family homes built in the last 20 years and new roads built over the last ten years. Also included are population and population projections, housing units, and greenhouse gas emissions data.

Population/Projections

1980	1990	2000	2010	2020	2030	2040	2050
1,210	1,360	1,841	1,995	2,175	2,306	2,367	2,355

Source: U.S. Census 1980, 1990, 2000, 2010 ; CDRPC Projections

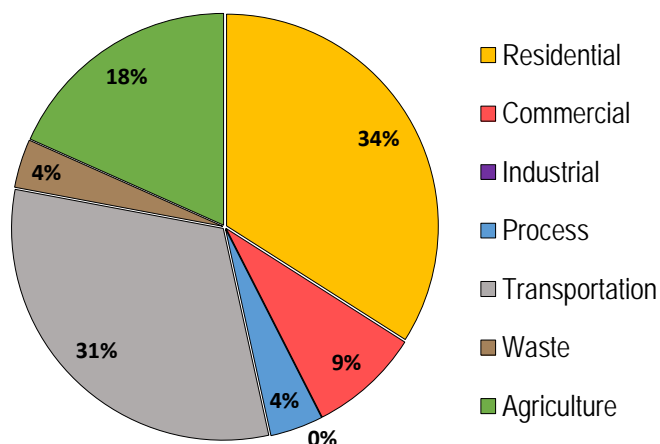
Housing Units 1980-2015

	1980	1990	2000	2010	2015
Total Housing Units	551	739	909	1,056	1,098

Source: U.S. Census 1980, 1990, 2000, 2010; U.S Census Building Permit Survey 2011-15



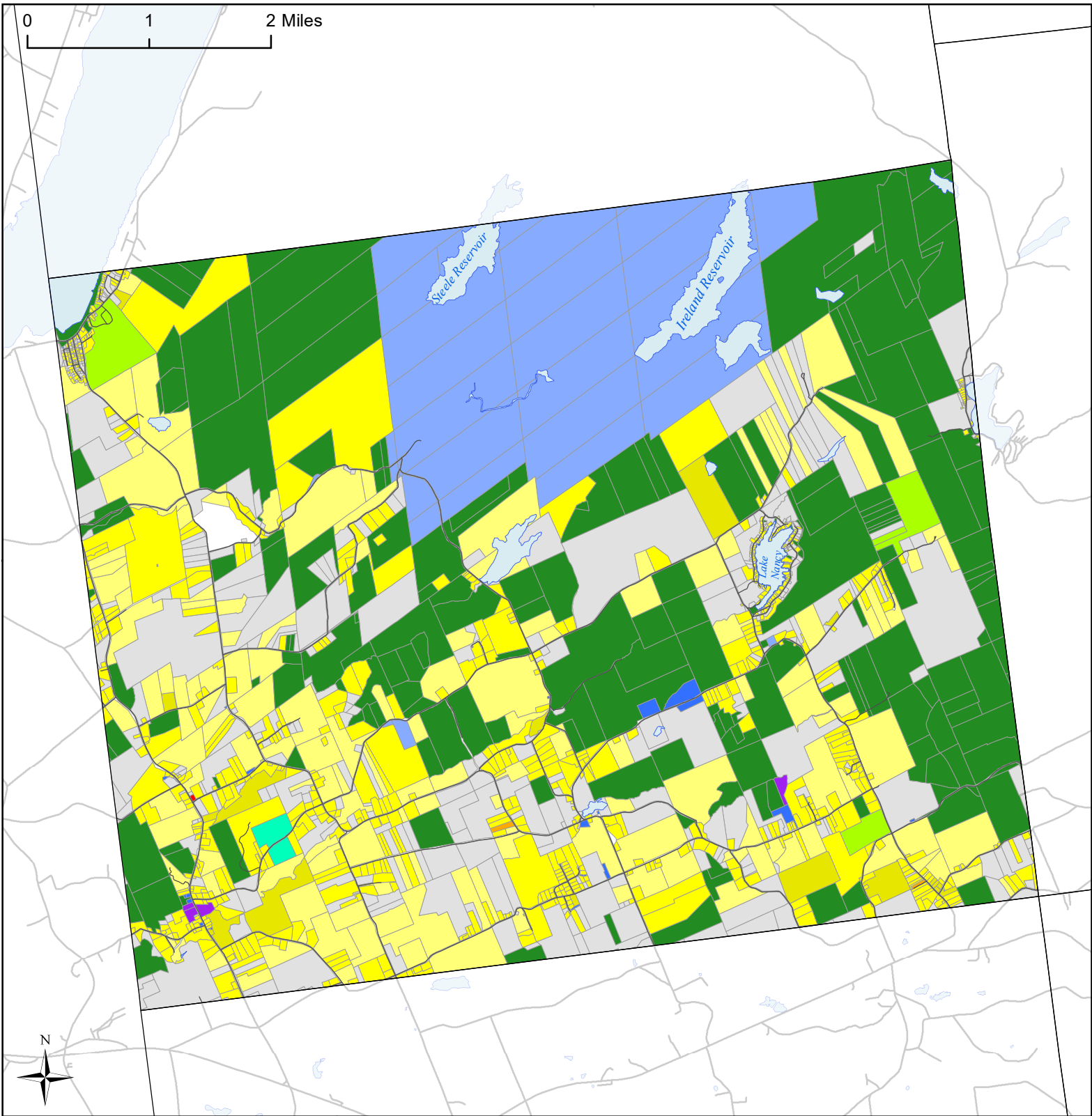
Greenhouse Gas Emissions by Sector



Per capita emissions (MTCO₂e*)

Town of Providence	9
Saratoga County	14
Capital District	15

Source: Capital District 2010 Regional GHG Inventory
*Metric Tons Carbon Dioxide Equivalent

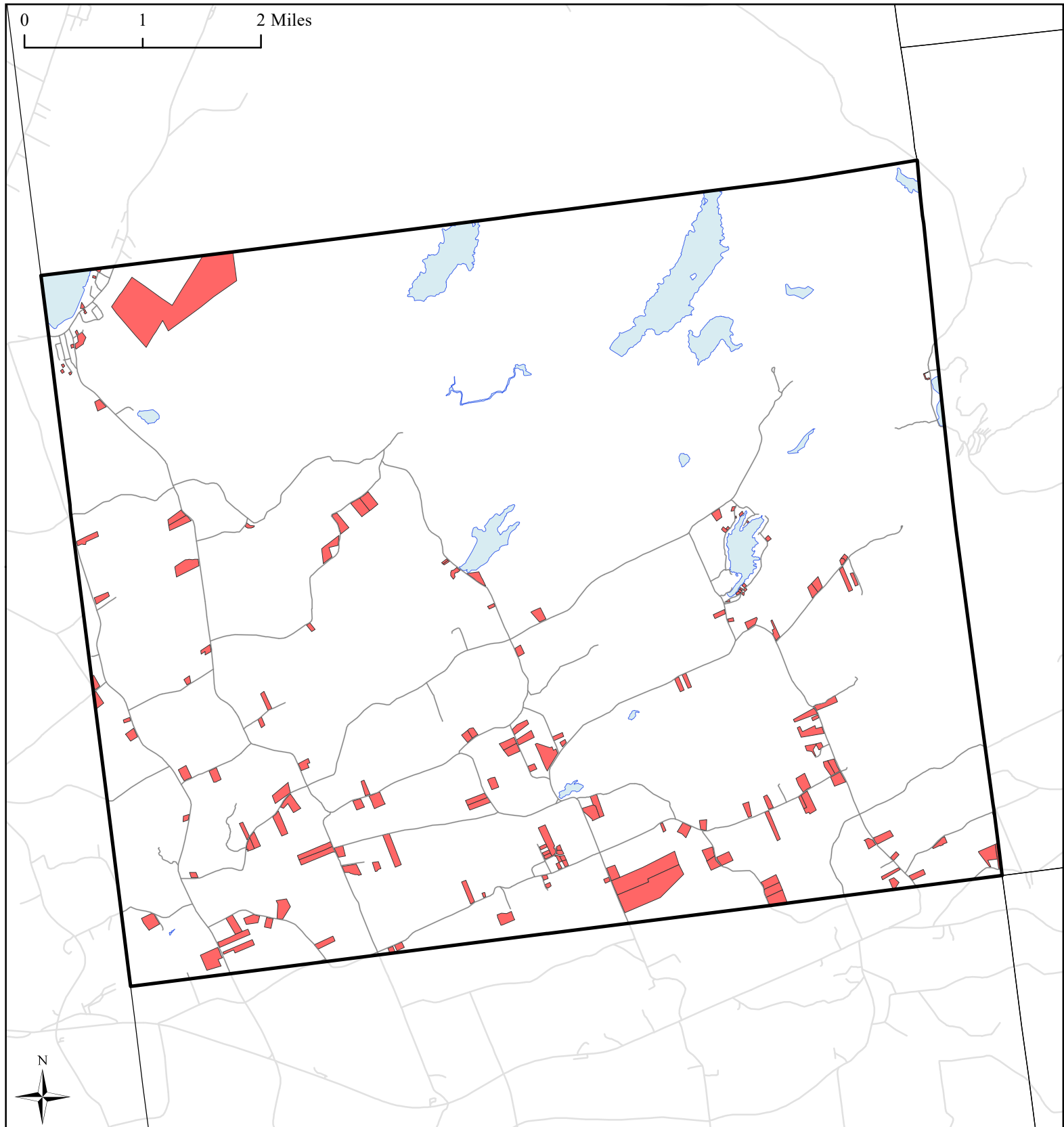


Town of Providence, NY Land Use



Land Use




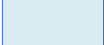
Agricultural	Community Services	Vacant Land
Outdoor Recreation	Mixed-Use	Municipal Boundaries
Wild, Forested and Conservation Lands	Single Family	Water Bodies
Commercial	Multi-Family	Roads
Industrial	Large Lot Residential	
	Public Services and Utilities	



Town of Providence, NY

Single Family Homes Built 1995-2015

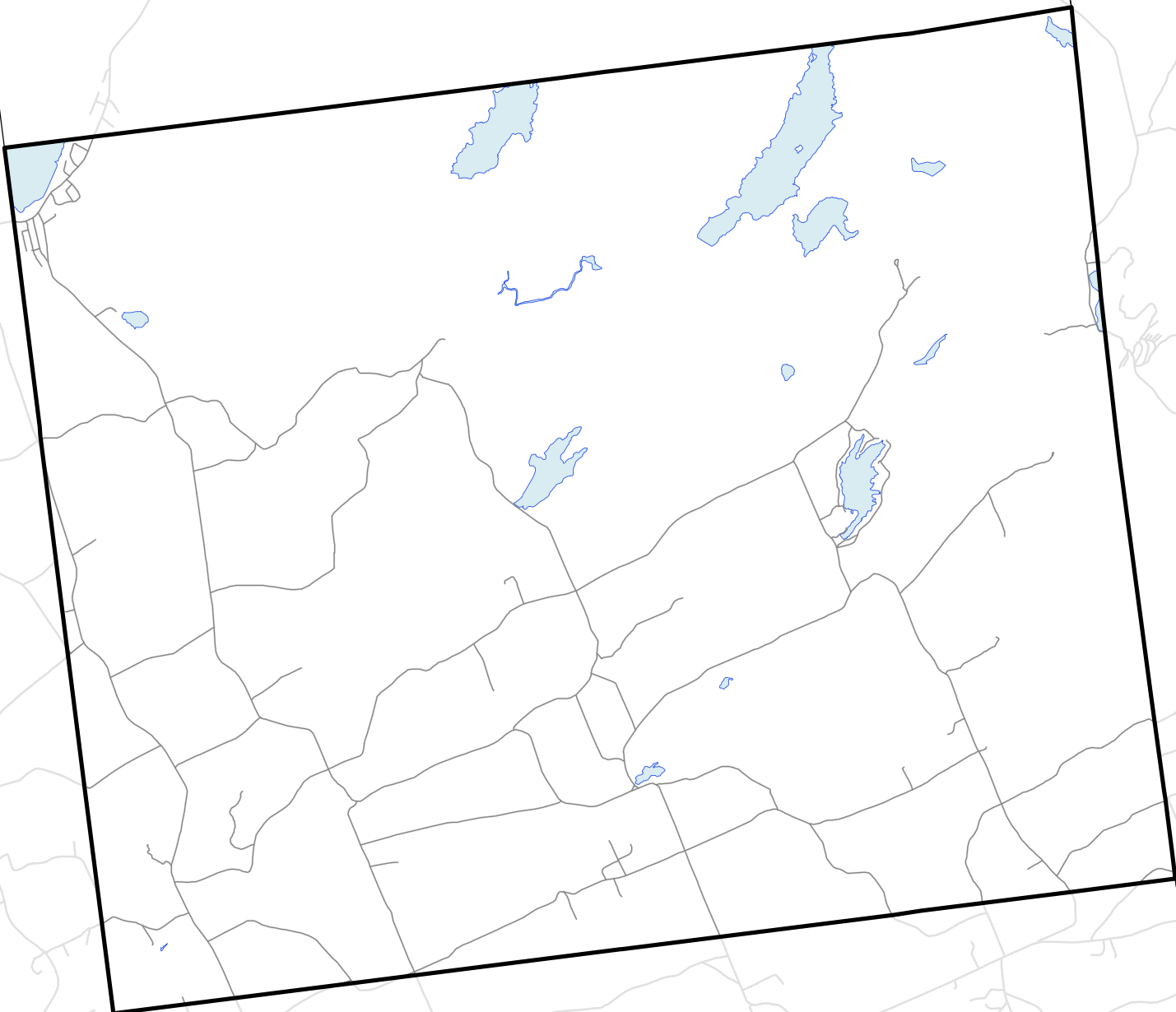


-  Single Family Homes Built 1995-2015
-  Providence Boundary
-  Municipal Boundaries
-  Water Bodies

 Roads

Source: Saratoga County tax parcel data, 2016

0 1 2 Miles



Roads Built 2005-2015: 0 Miles
Sidewalks Built 2005-2015: 0 Miles
Percent Roads with Sidewalks*: 0%

**Does not include pre-existing sidewalks built prior to 2005*

Town of Providence, NY Roads Built 2005-2015

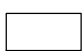


**Roads Built
2005-2015**


— Sidewalk

— No Sidewalk

 Town of Providence

 Municipal Boundaries

 Water Bodies

 Roads Built Prior to 2005

Source: NYS GIS Clearinghouse, GIS Program Office