



Community Growth Profile

Town of Poestenkill, NY



The following Community Growth Profile provides information regarding development patterns in the Town of Poestenkill, Rensselaer County, NY. This report includes a current land use map, a map showing single family homes built in the last 20 years and new roads built over the last ten years. Also included are population and population projections, housing units, and greenhouse gas emissions data.

Population/Projections

1980	1990	2000	2010	2020	2030	2040	2050
3,664	3,809	4,054	4,530	4,771	5,006	5,071	5,094

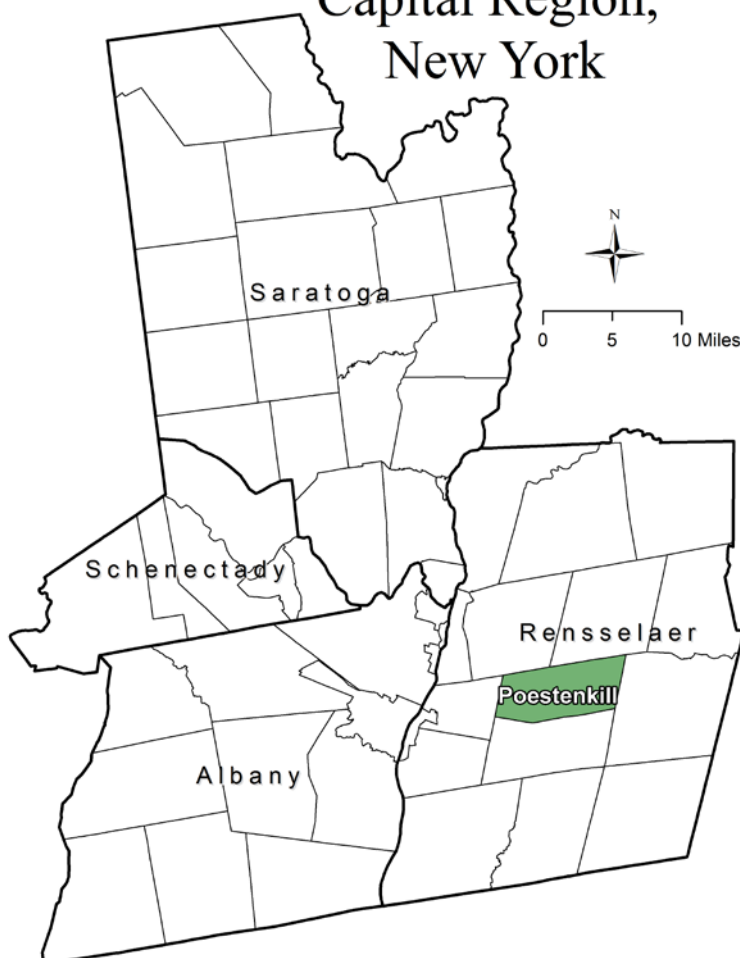
Source: U.S. Census 1980, 1990, 2000, 2010 ; CDRPC Projections

Housing Units 1980-2015

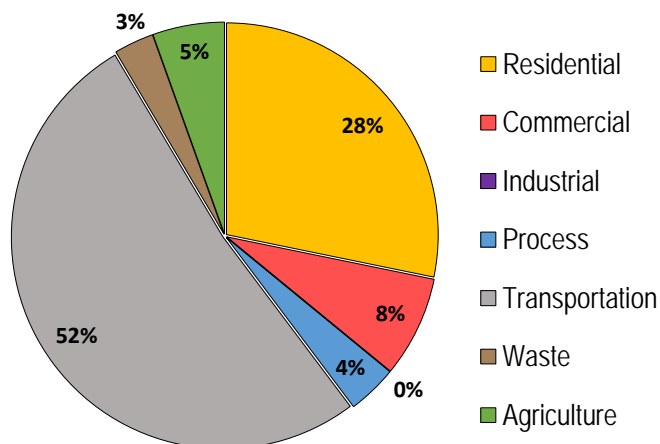
	1980	1990	2000	2010	2015
Total Housing Units	1,269	1,437	1,628	1,765	1,792

Source: U.S. Census 1980, 1990, 2000, 2010; U.S. Census Building Permit Survey 2011-15

Capital Region, New York



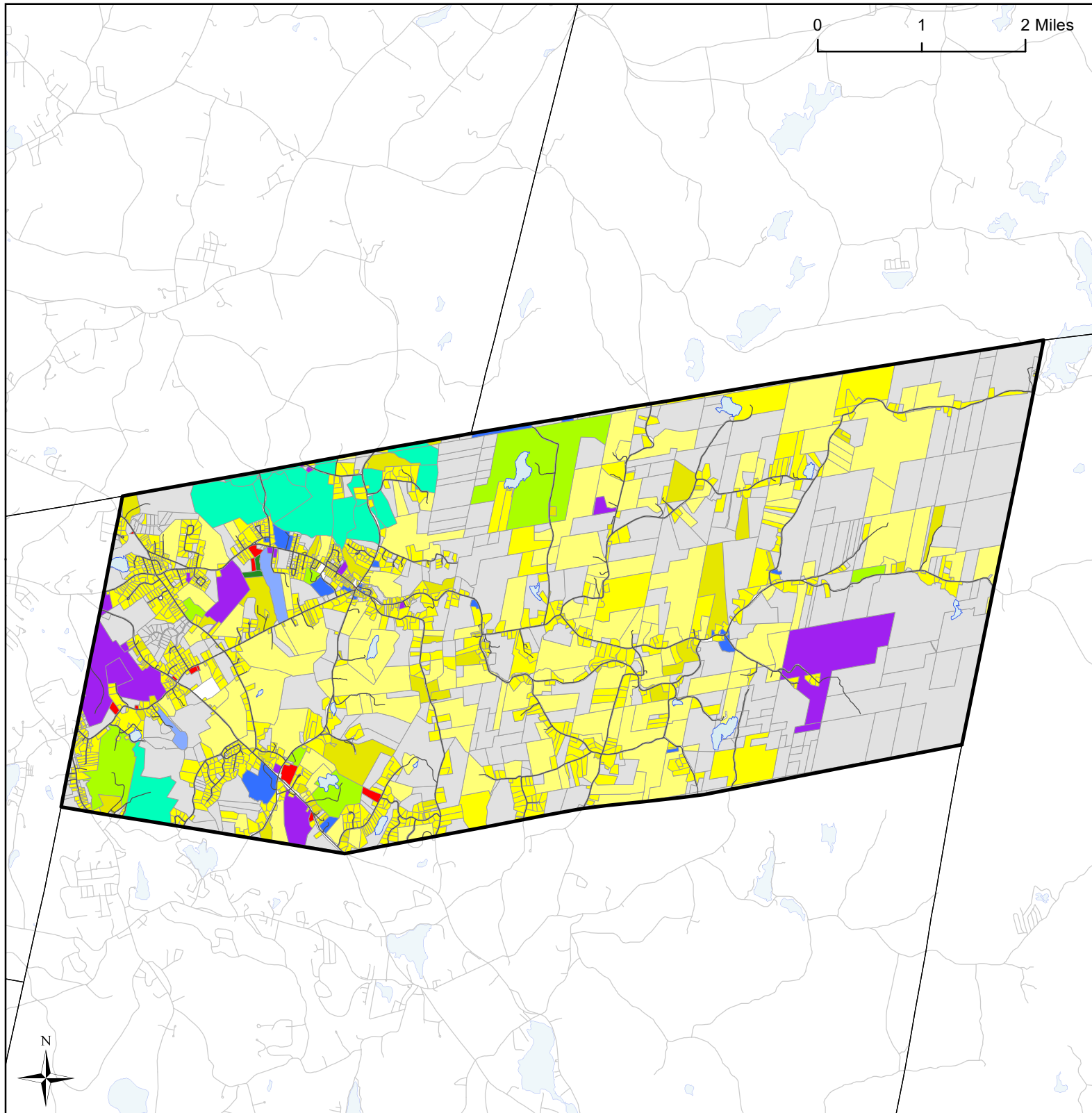
Greenhouse Gas Emissions by Sector



Per capita emissions (MTCO₂e*)

Town of Poestenkill	10
Rensselaer County	11
Capital District	15

Source: Capital District 2010 Regional GHG Inventory
*Metric Tons Carbon Dioxide Equivalent



Town of Poestenkill, NY Land Use

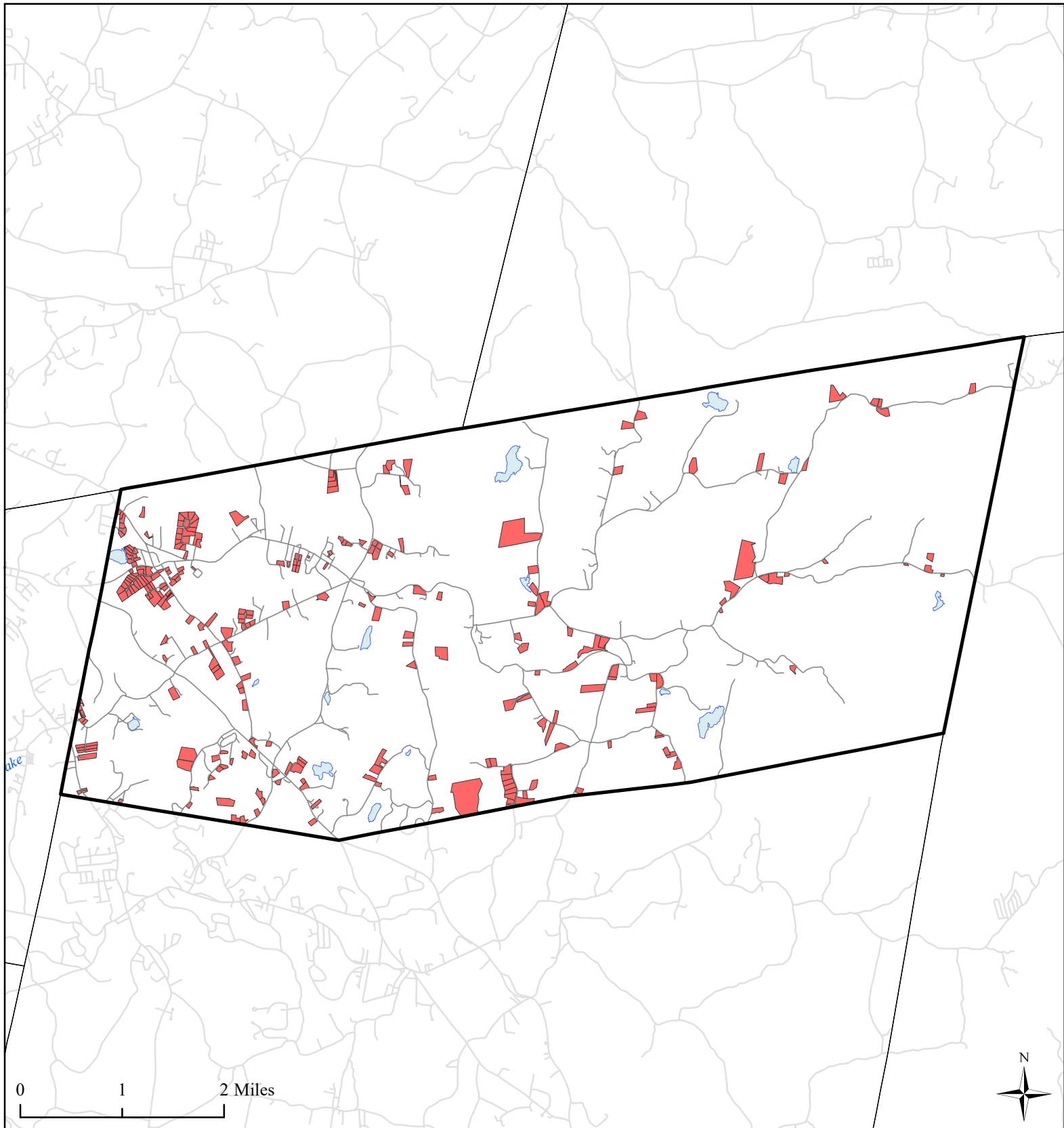


Land Use

- Agricultural
- Outdoor Recreation
- Wild, Forested and Conservation Lands
- Commercial
- Industrial

- Community Services
- Mixed-Use
- Single Family
- Multi-Family
- Large Lot Residential
- Public Services and Utilities

- Vacant Land
- Town of Poestenkill
- Municipal Boundaries
- Water Bodies
- Roads



Town of Poestenkill, NY **Single Family Homes Built** **1995-2015**



- Single Family Homes Built 1995-2015
- Poestenkill Boundary
- Municipal Boundaries
- Water Bodies
- Roads

0 1 2 Miles



Roads Built 2005-2015: .42 Miles
Sidewalks Built 2005-2015: 0 Miles
Percent Roads with Sidewalks*: 0%

**Does not include pre-existing sidewalks built prior to 2005*

Town of Poestenkill, NY

Roads Built 2005-2015



- Roads Built 2005-2015**
- Sidewalk
- No Sidewalk
- Town of Poestenkill
- Municipal Boundaries
- Water Bodies
- Roads Built Prior to 2005

Source: NYS GIS Clearinghouse, GIS Program Office