



Community Growth Profile

Town of Petersburgh, NY



The following Community Growth Profile provides information regarding development patterns in the Town of Petersburgh, Rensselaer County, NY. This report includes a current land use map, a map showing single family homes built in the last 20 years and new roads built over the last ten years. This report also includes population and population projections, housing units, and greenhouse gas emissions data for the Town.

Population/Projections

1980	1990	2000	2010	2020	2030	2040	2050
1,369	1,461	1,563	1,525	1,556	1,582	1,587	1,567

Source: U.S. Census 1980, 1990, 2000, 2010 ; CDRPC Projections

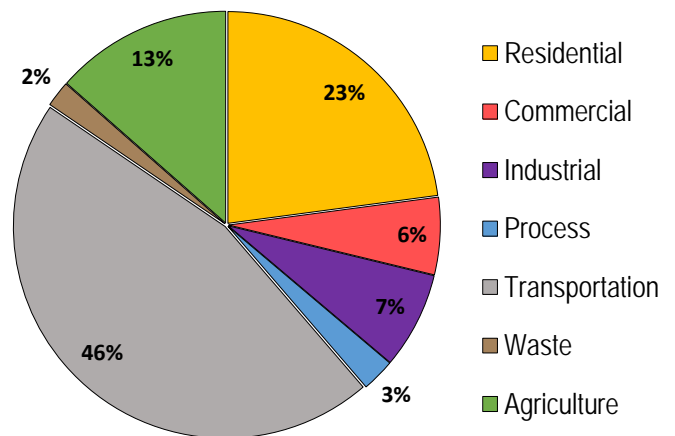
Housing Units 1980-2015

	1980	1990	2000	2010	2015
Total Housing Units	537	910	695	736	737

Source: U.S. Census 1980, 1990, 2000, 2010; U.S. Census Building Permit Survey 2011-15



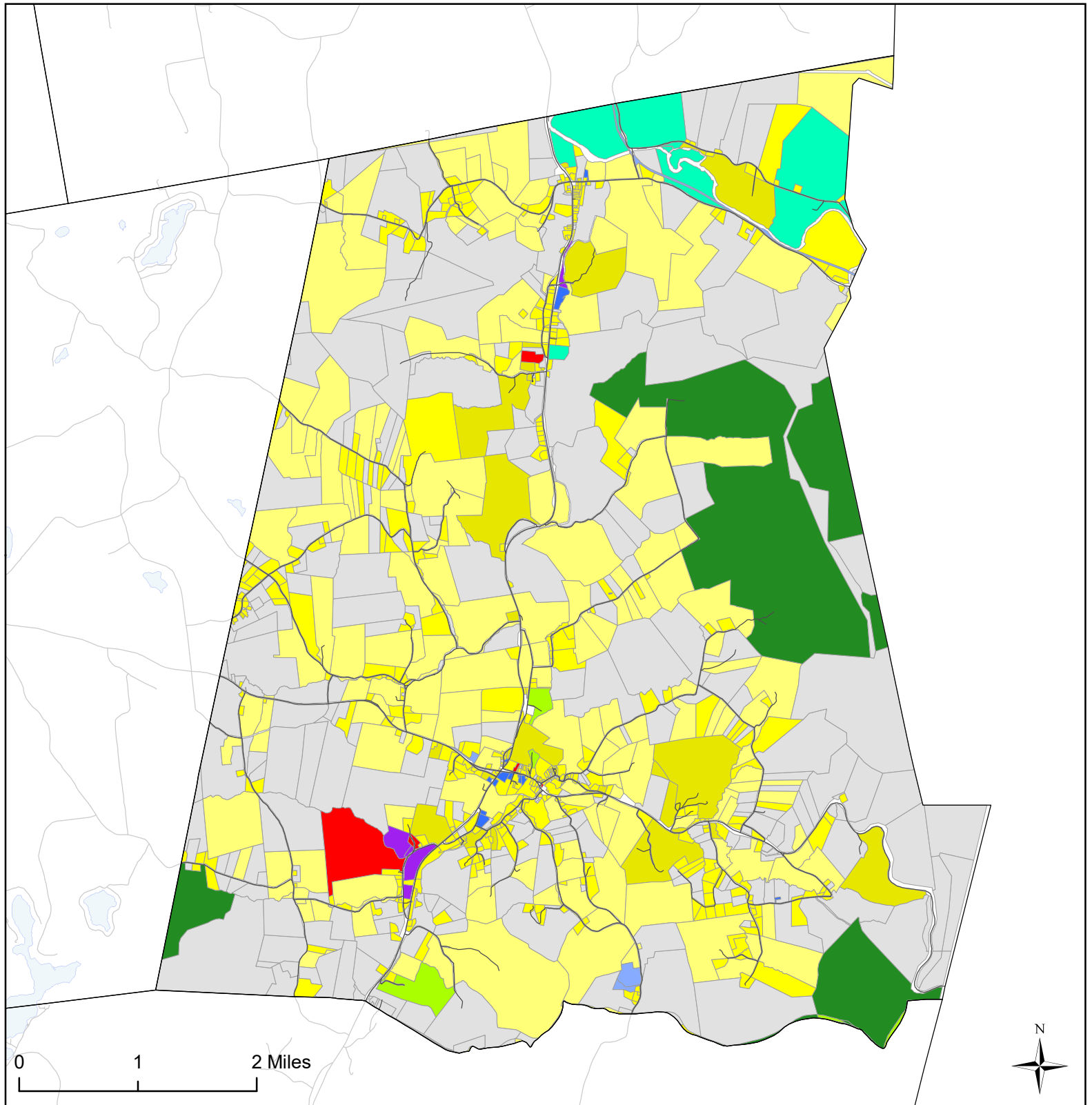
Greenhouse Gas Emissions by Sector



Per capita emissions (MTCO₂e*)

Town of Petersburgh	16
Rensselaer County	11
Capital District	15

Source: Capital District 2010 Regional GHG Inventory
*Metric Tons Carbon Dioxide Equivalent

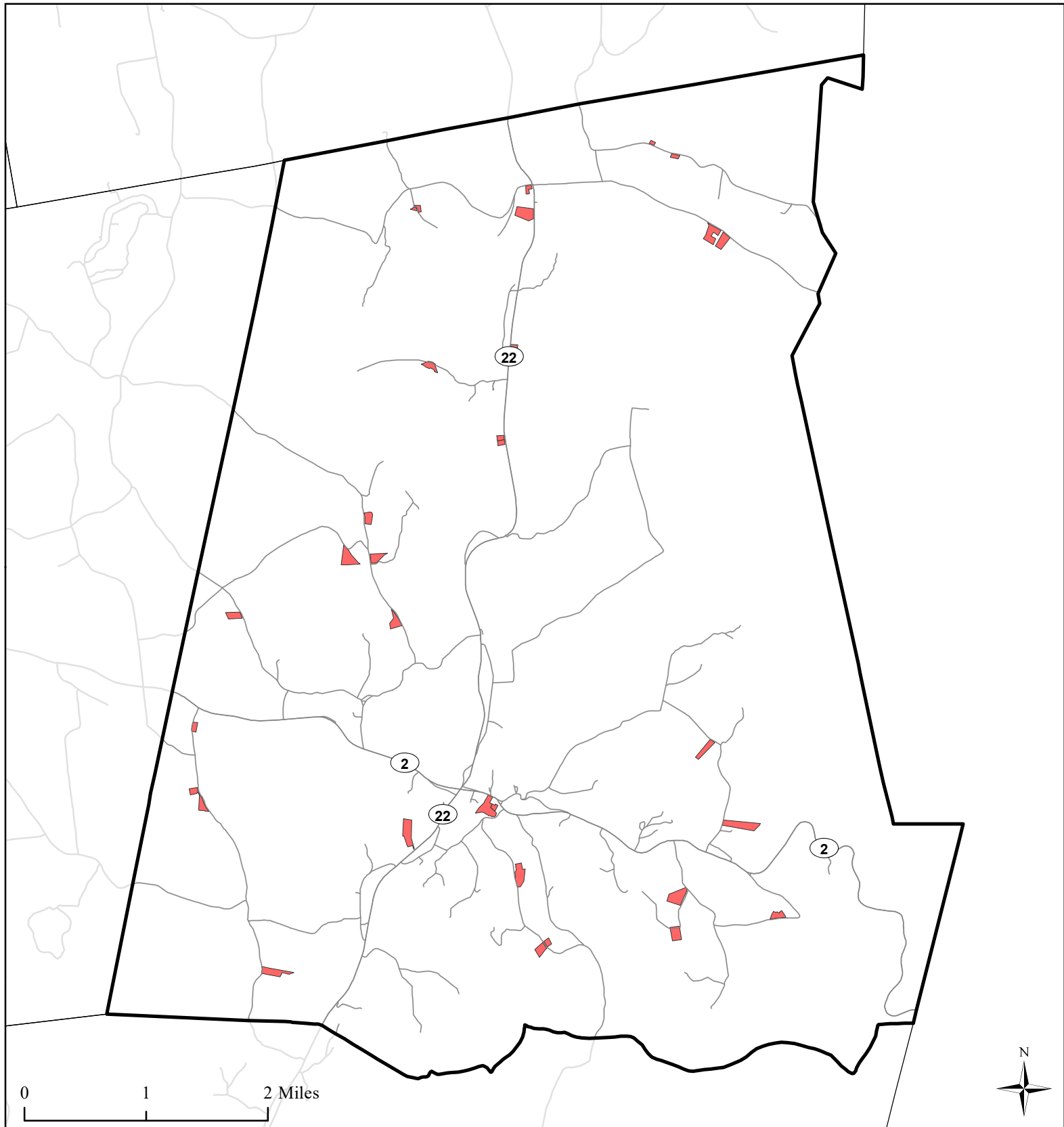


Town of Petersburgh, NY Land Use



Land Use

- | | | |
|---------------------------------------|-----------------------|-------------------------------|
| Agricultural | Industrial | Public Services and Utilities |
| Outdoor Recreation | Community Services | Vacant Land |
| Wild, Forested and Conservation Lands | Mixed-Use | Water Bodies |
| Commercial | Single Family | Municipal Boundaries |
| | Multi-Family | Roads |
| | Large Lot Residential | |



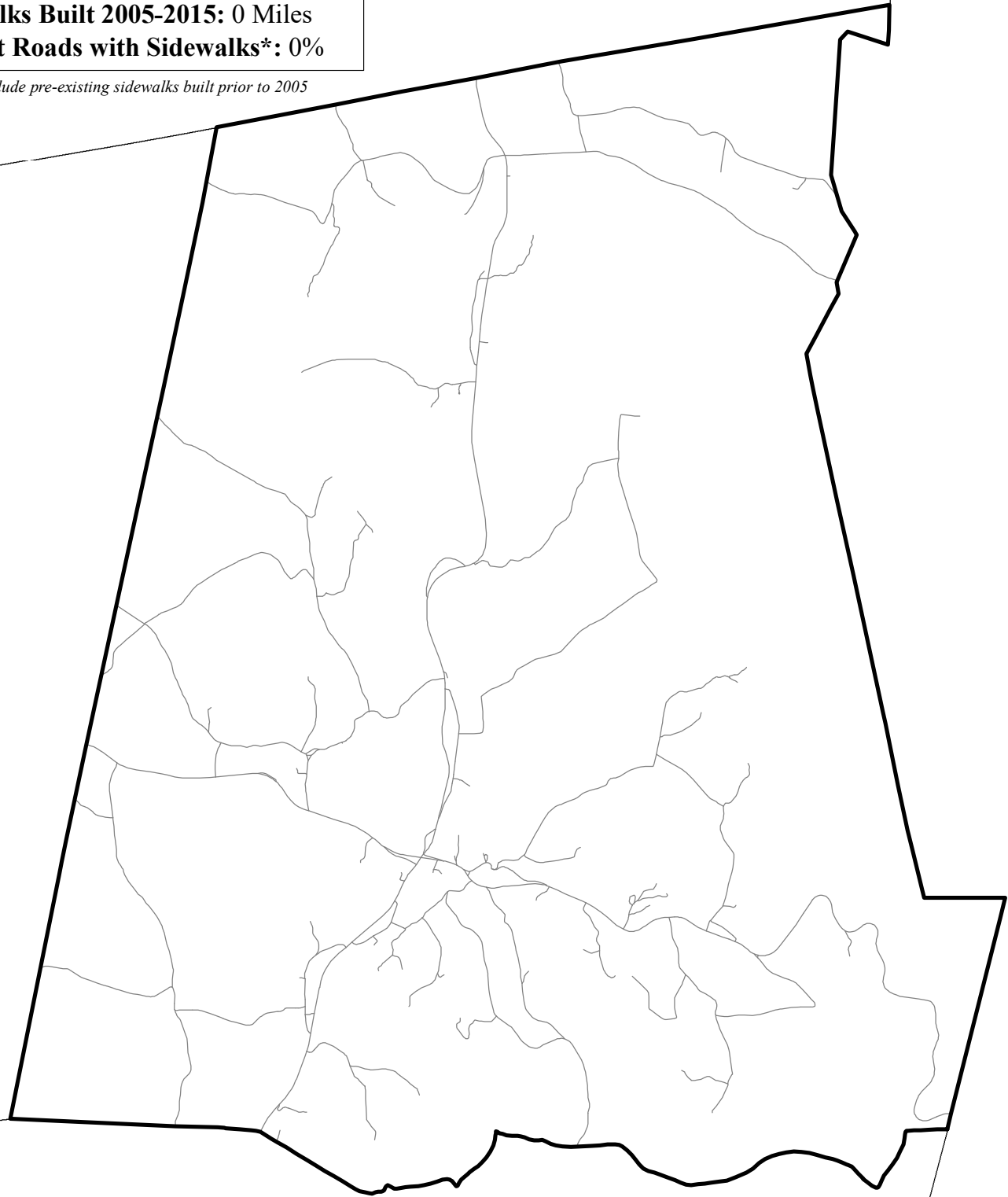
Town of Petersburgh, NY Single Family Homes Built 1995-2015



- Single Family Homes Built 1995-2015
- Petersburgh Boundary
- Municipal Boundaries
- Water Bodies
- Roads

Roads Built 2005-2015: 0 Miles
Sidewalks Built 2005-2015: 0 Miles
Percent Roads with Sidewalks*: 0%

**Does not include pre-existing sidewalks built prior to 2005*



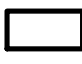
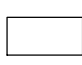
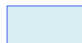

Town of Petersburg, NY

Roads Built 2005-2015



Roads Built 2005-2015

— Sidewalk
 — No Sidewalk

-  Town of Petersburg
-  Municipal Boundaries
-  Water Bodies
-  Roads Built Prior to 2005