



Community Growth Profile

Town of Northumberland, NY



The following Community Growth Profile provides information regarding development patterns in the Town of Northumberland, Saratoga County, NY. This report includes a current land use map, a map showing single family homes built in the last 20 years and new roads built over the last ten years. Also included are population and population projections, housing units, and greenhouse gas emissions data.

Population/Projections

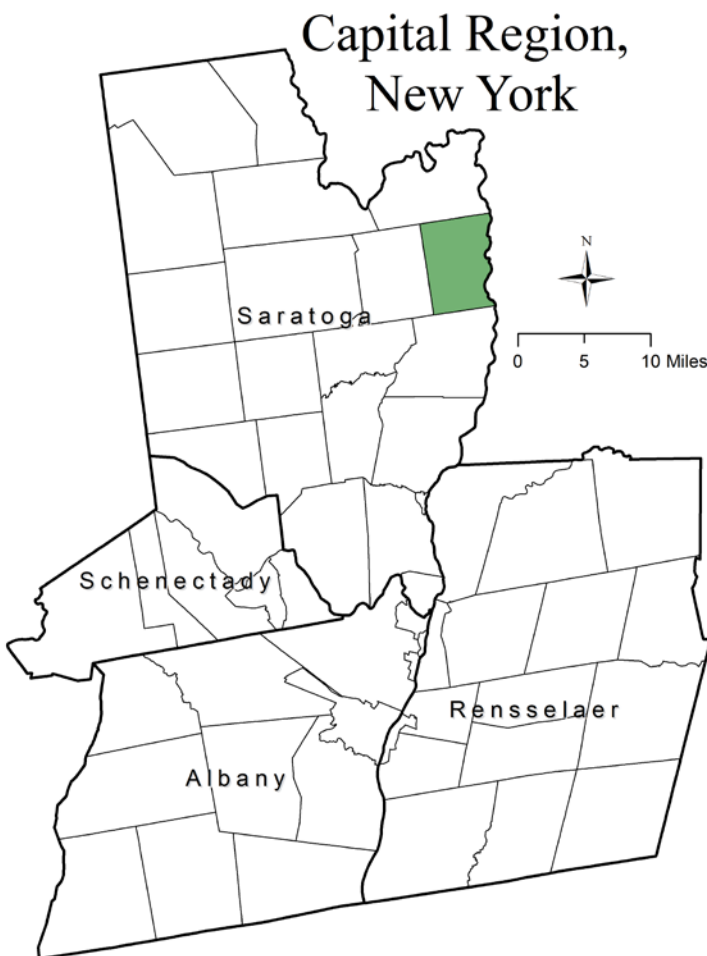
1980	1990	2000	2010	2020	2030	2040	2050
2,732	3,645	4,603	5,087	5,450	5,736	5,971	5,949

Source: U.S. Census 1980, 1990, 2000, 2010 ; CDRPC Projections

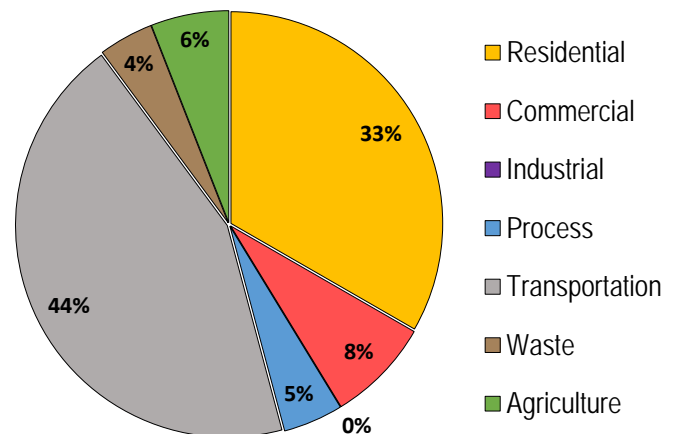
Housing Units 1980-2015

	1980	1990	2000	2010	2015
Total Housing Units	912	1,240	1,717	1,925	1,974

Source: U.S. Census 1980, 1990, 2000, 2010; U.S. Census Building Permit Survey 2011-15



Greenhouse Gas Emissions by Sector

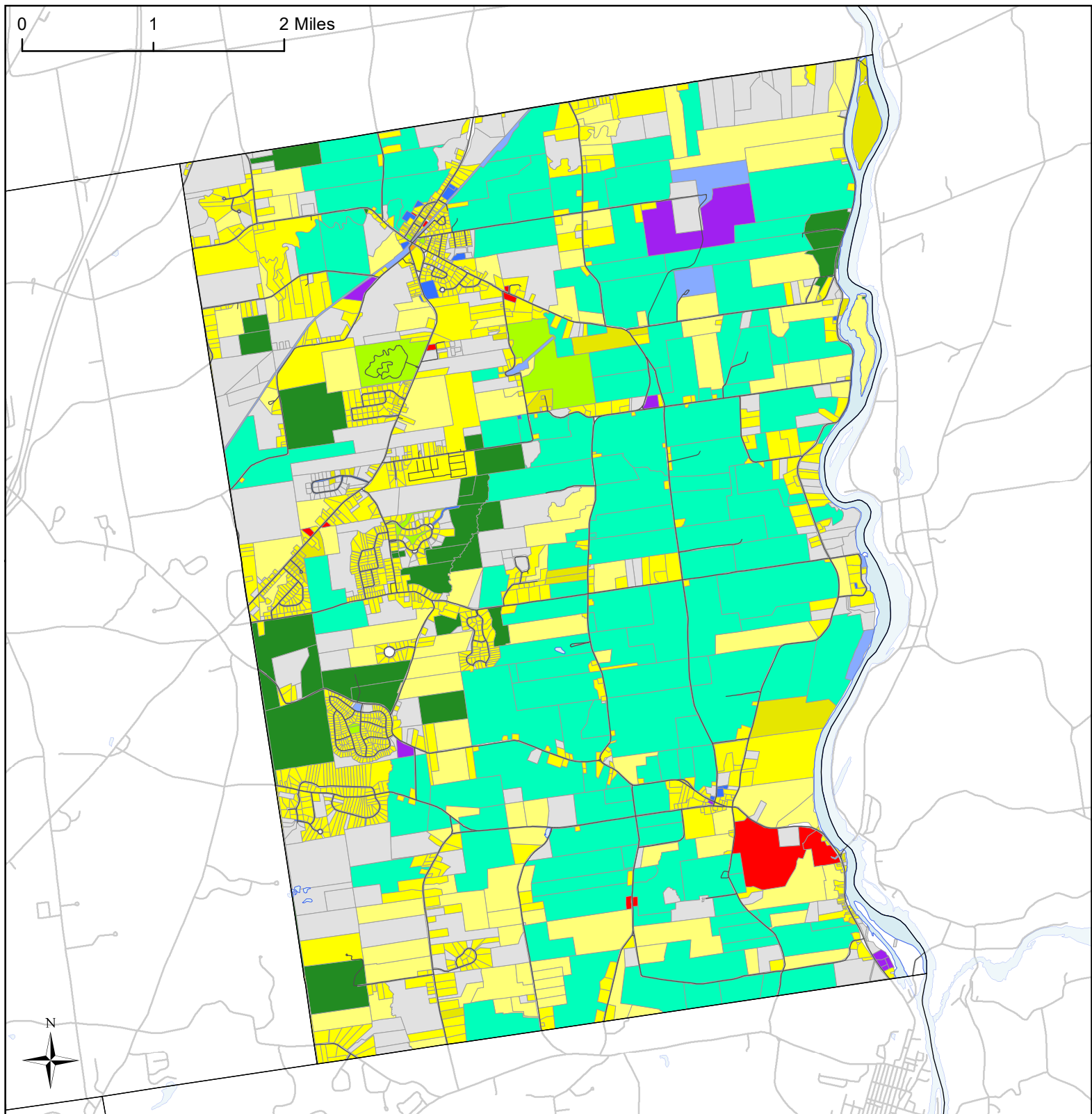


Per capita emissions (MTCO₂e*)

Town of Northumberland	8
Saratoga County	14
Capital District	15

Source: Capital District 2010 Regional GHG Inventory

*Metric Tons Carbon Dioxide Equivalent



Town of Northumberland, NY Land Use



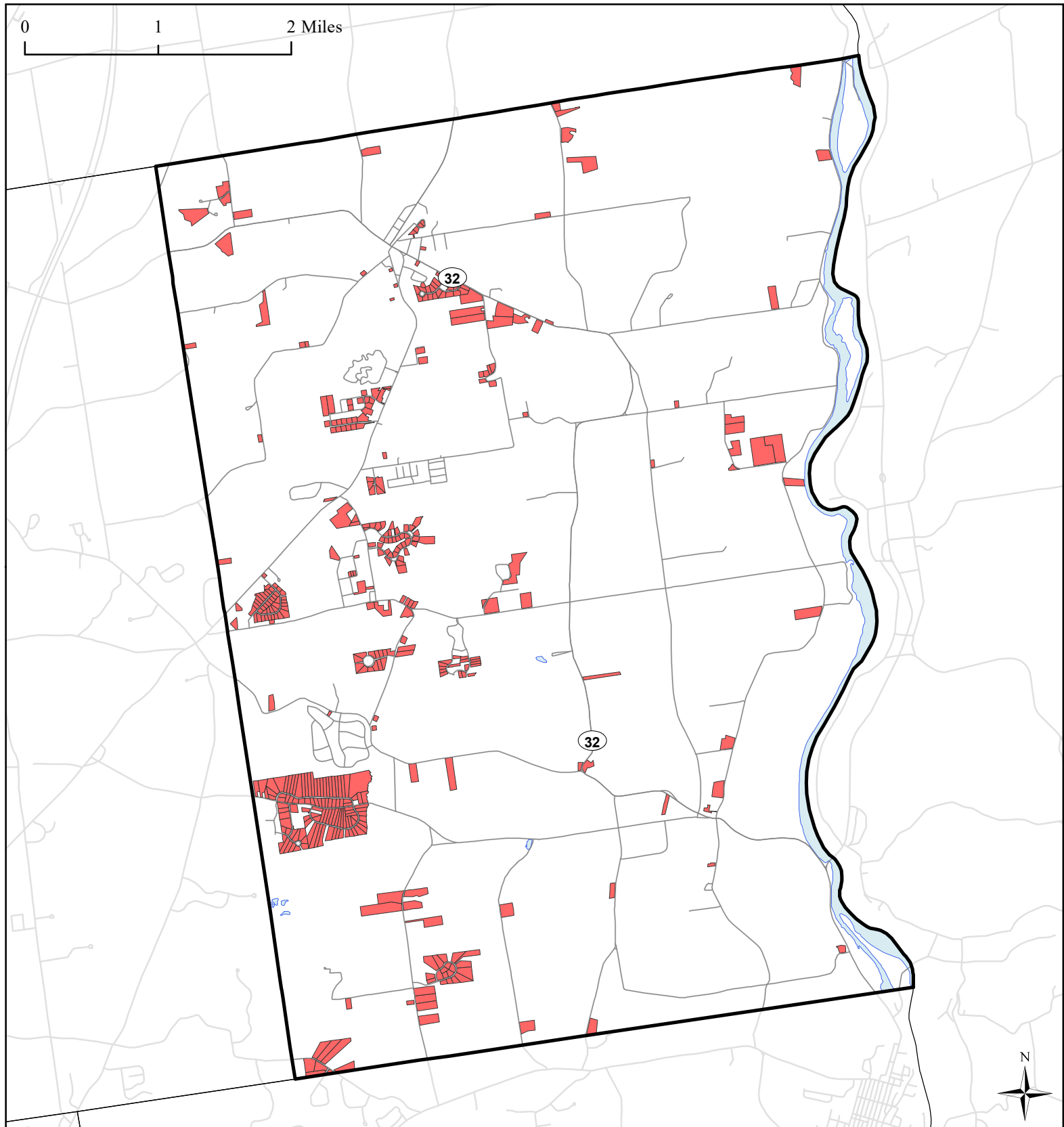
Source: Saratoga County Real Property Services, 2016

Land Use

- Agricultural
- Outdoor Recreation
- Wild, Forested and Conservation Lands
- Commercial
- Industrial

- Community Services
- Mixed-Use
- Single Family
- Multi-Family
- Large Lot Residential

- Public Services and Utilities
- Vacant Land
- Municipal Boundaries
- Water Bodies
- Roads



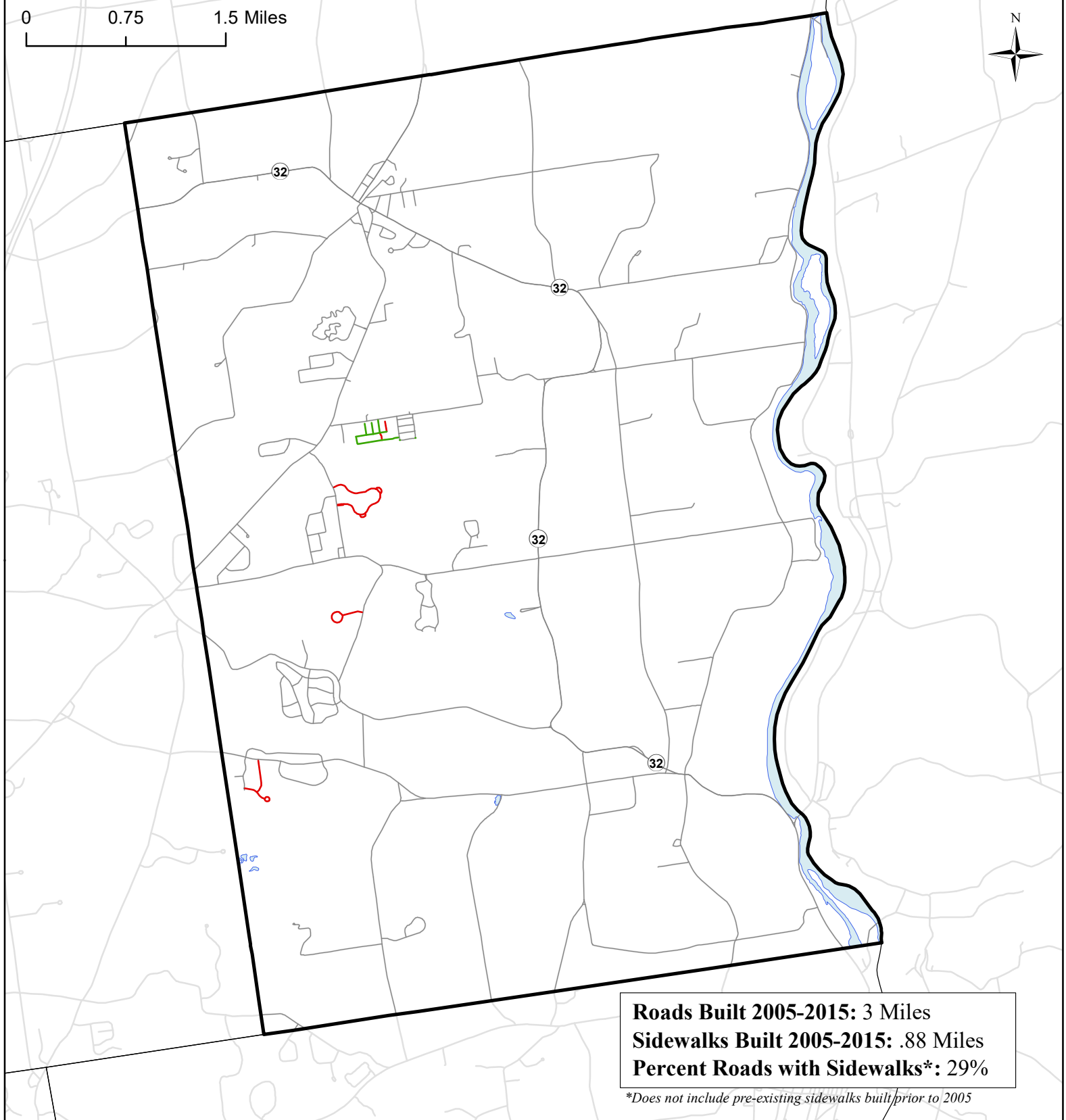
Town of Northumberland, NY **Single Family Homes Built** **1995-2015**



- Single Family Homes Built 1995-2015
- Northumberland Boundary
- Municipal Boundaries
- Water Bodies

— Roads
 Source: Saratoga County tax parcel data, 2016

0 0.75 1.5 Miles



Town of Northumberland, NY Roads Built 2005-2015



Roads Built 2005-2015

— Sidewalk

— No Sidewalk

▭ Town of
Northumberland

▭ Municipal
Boundaries

▭ Water Bodies

— Roads Built Prior to
2005

Source: NYS GIS Clearinghouse, GIS Program Office