



Community Growth Profile Town of New Scotland, NY



The following Community Growth Profile provides information regarding development patterns in the Town of New Scotland, Albany County, NY. This report includes a current land use map, a map showing single family homes built in the last 20 years and new roads built over the last ten years. Also included are population and population projections, housing units, and greenhouse gas emissions data.

Population/Projections

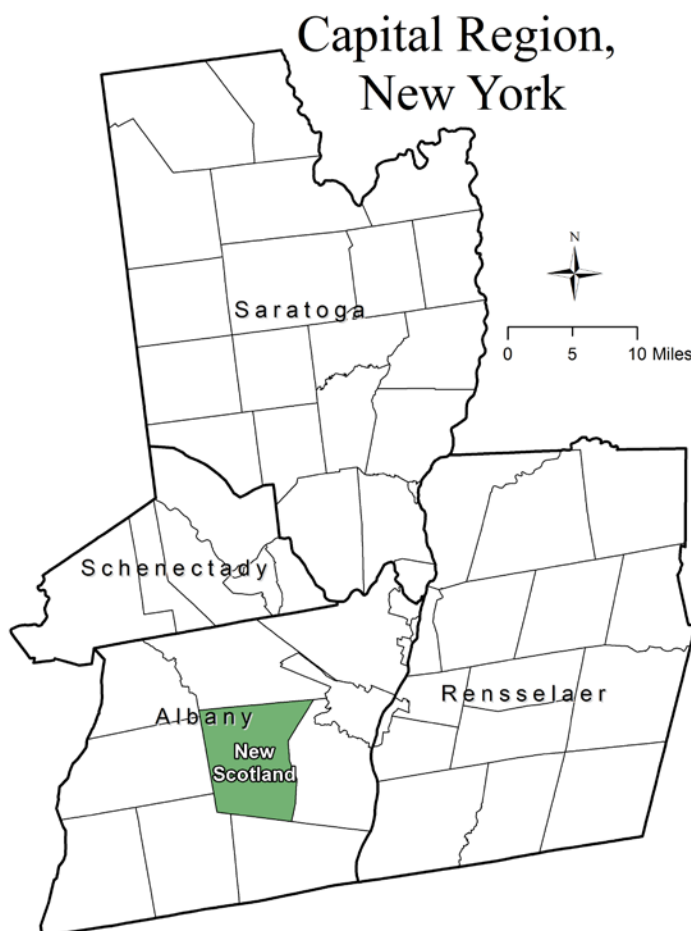
1980	1990	2000	2010	2020	2030	2040	2050
8,976	9,139	8,626	8,648	8,797	8,978	8,948	8,918

Source: U.S. Census 1980, 1990, 2000, 2010 ; CDRPC Projections

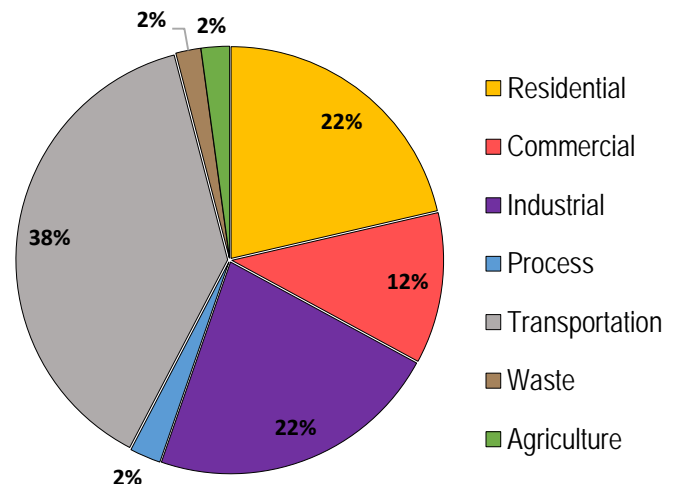
Housing Units 1980-2015

	1980	1990	2000	2010	2015
Total Housing Units	3,047	3,365	3,470	3,640	3,666

Source: U.S. Census 1980, 1990, 2000, 2010; U.S. Census Building Permit Survey 2011-15



Greenhouse Gas Emissions by Sector

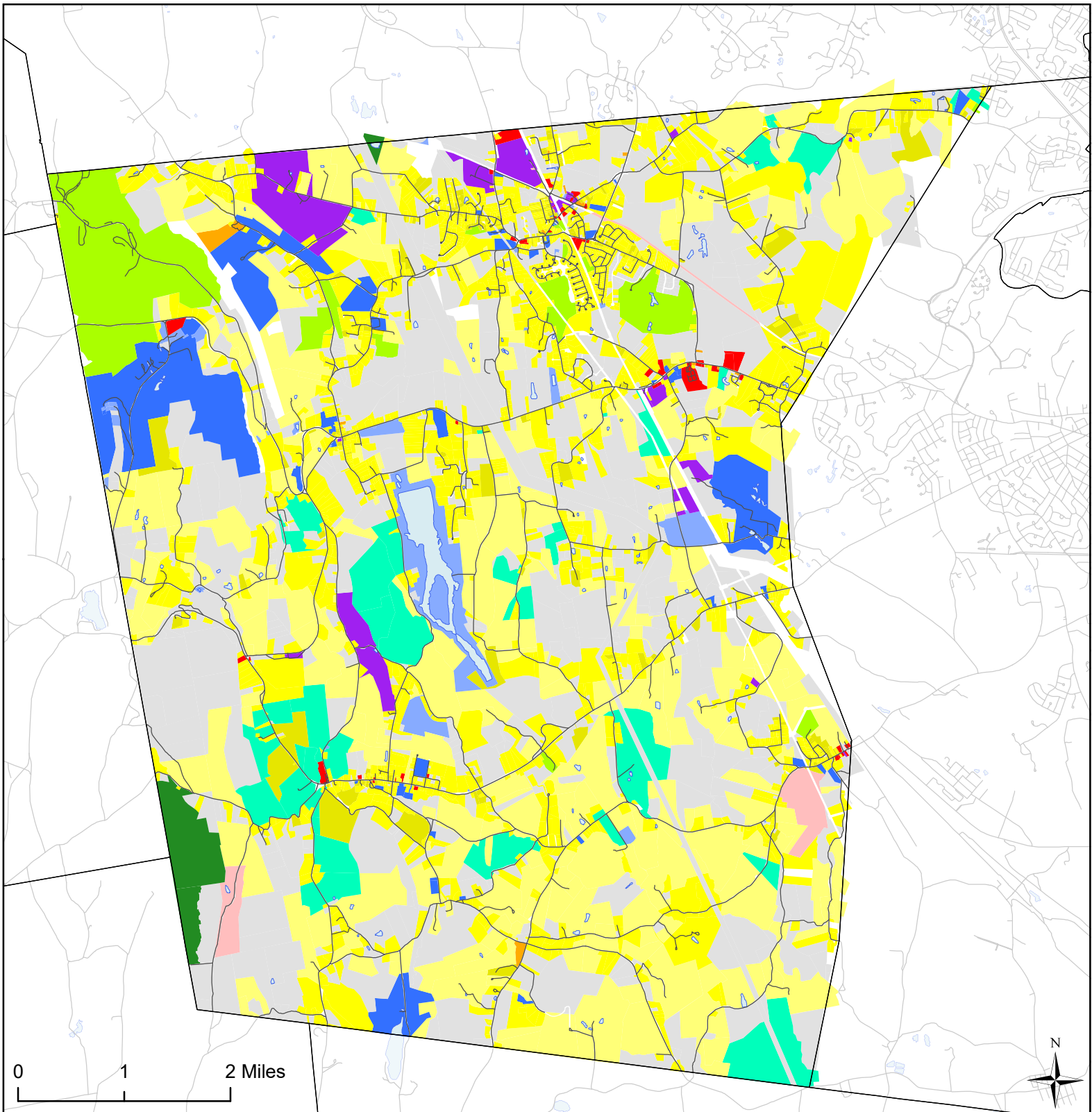


Per capita emissions (MTCO₂e*)

Town of New Scotland	16
Albany County	21
Capital District	15

Source: Capital District 2010 Regional GHG Inventory

*Metric Tons Carbon Dioxide Equivalent




Town of New Scotland, NY Land Use




Land Use

 Agricultural


 Outdoor Recreation

 Wild, Forested and Conservation Lands

 Commercial

 Recreation and Entertainment


 Industrial


 Community Services

 Mixed-Use

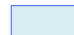
 Single Family

 Multi-Family

 Large Lot Residential

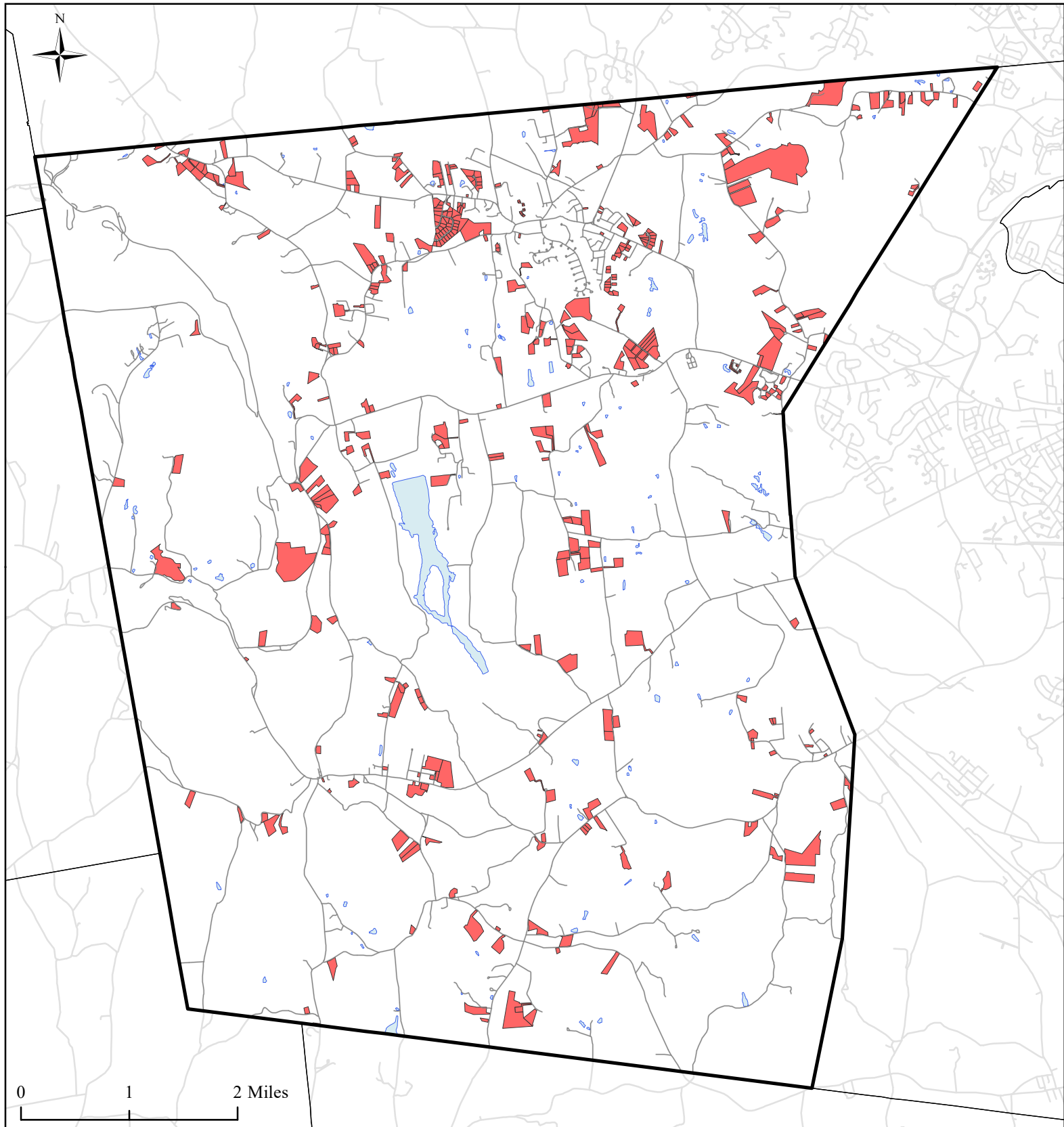
 Public Services and Utilities

 Vacant Land

 Water Bodies



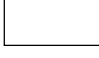
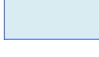

 Municipal Boundaries

 Roads



Town of New Scotland, NY Single Family Homes Built 1995-2015

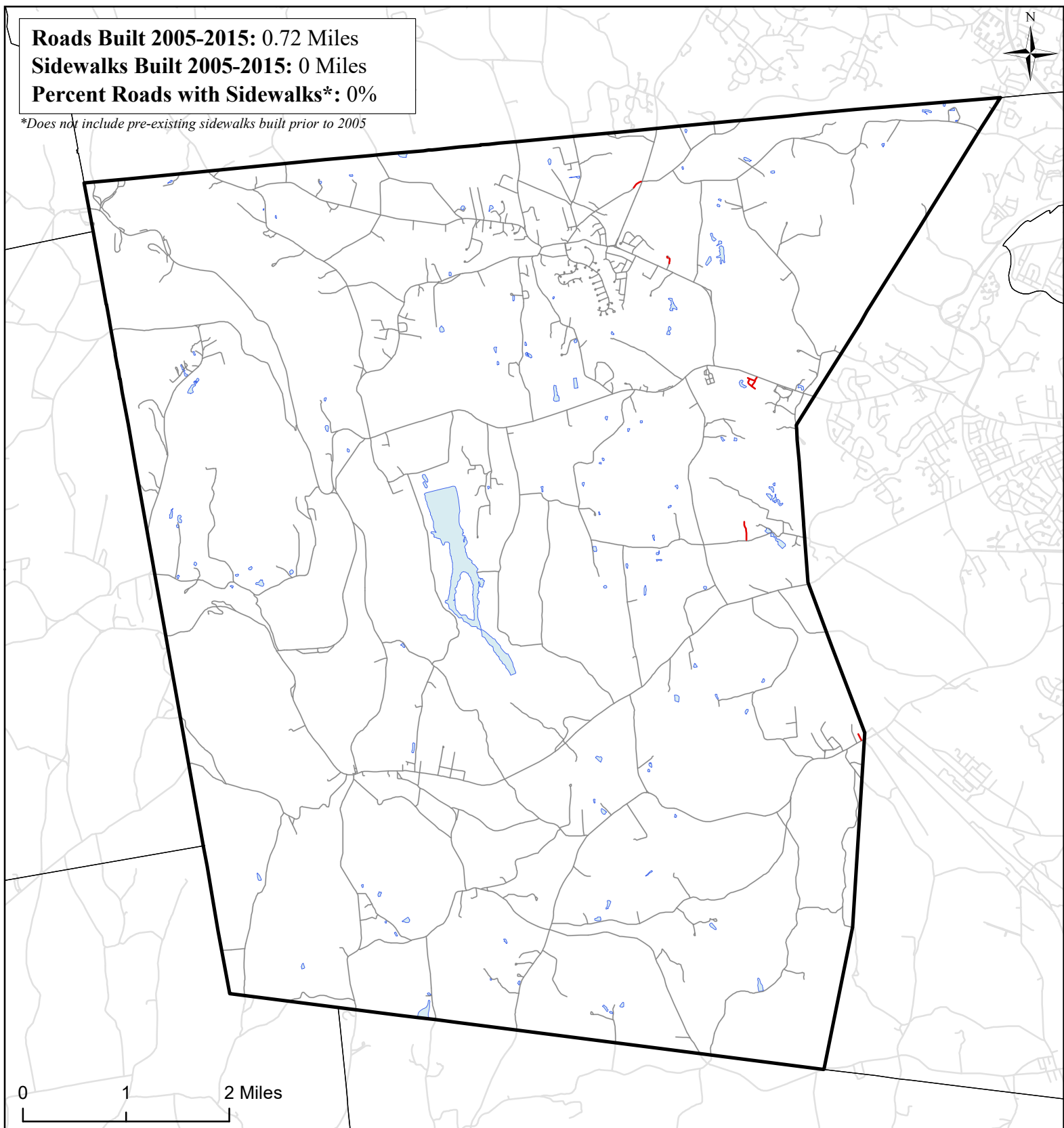


-  Single Family Homes Built 1995-2015
-  New Scotland Boundary
-  Municipal Boundaries
-  Water Bodies
-  Roads

Source: Albany County tax parcel data; NYS GIS Program Office 2016

Roads Built 2005-2015: 0.72 Miles
Sidewalks Built 2005-2015: 0 Miles
Percent Roads with Sidewalks*: 0%

**Does not include pre-existing sidewalks built prior to 2005*



Town of New Scotland, NY

Roads Built 2005-2015



Roads Built 2005-2015

— Sidewalk

— No Sidewalk

▭ Town of New Scotland

▭ Municipal Boundaries

▭ Water Bodies

— Roads Built Prior to 2005

Source: NYS GIS Clearinghouse, GIS Program Office