



Community Growth Profile

Town of Moreau, NY



The following Community Growth Profile provides information regarding development patterns in the Town of Moreau, Saratoga County, NY. This report includes a current land use map, a map showing single family homes built in the last 20 years and new roads built over the last ten years. Also included are population and population projections, housing units, and greenhouse gas emissions data.

Population/Projections

1980	1990	2000	2010	2020	2030	2040	2050
11,188	13,022	13,826	14,728	15,601	16,276	16,551	16,384

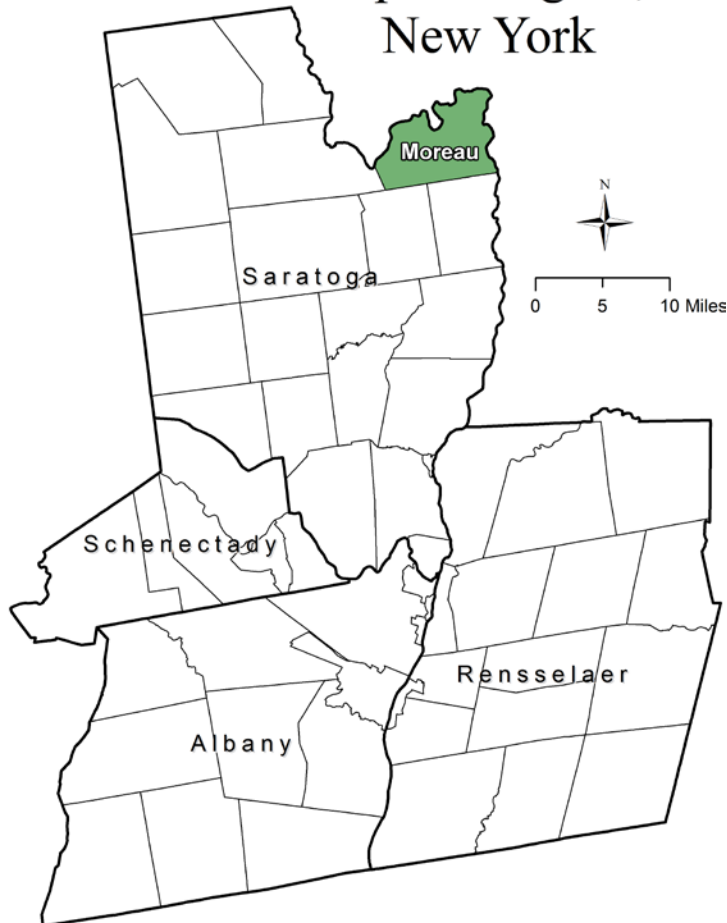
Source: U.S. Census 1980, 1990, 2000, 2010 ; CDRPC Projections

Housing Units 1980-2015

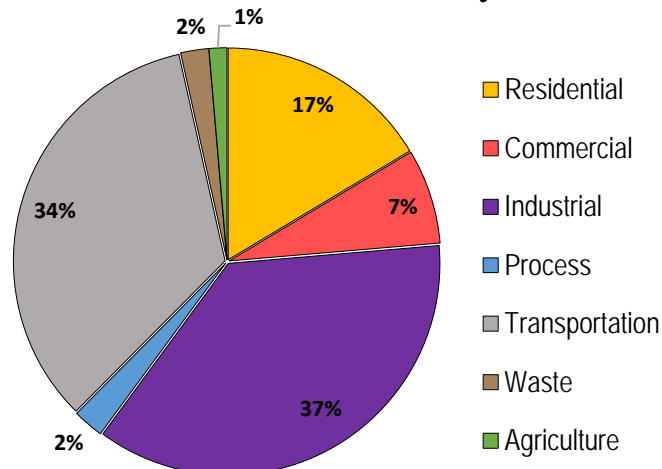
	1980	1990	2000	2010	2015
Total Housing Units	3,977	4,831	5,395	5,953	6,389

Source: U.S. Census 1980, 1990, 2000, 2010; U.S. Census Building Permit Survey 2011-15

Capital Region, New York



Greenhouse Gas Emissions by Sector

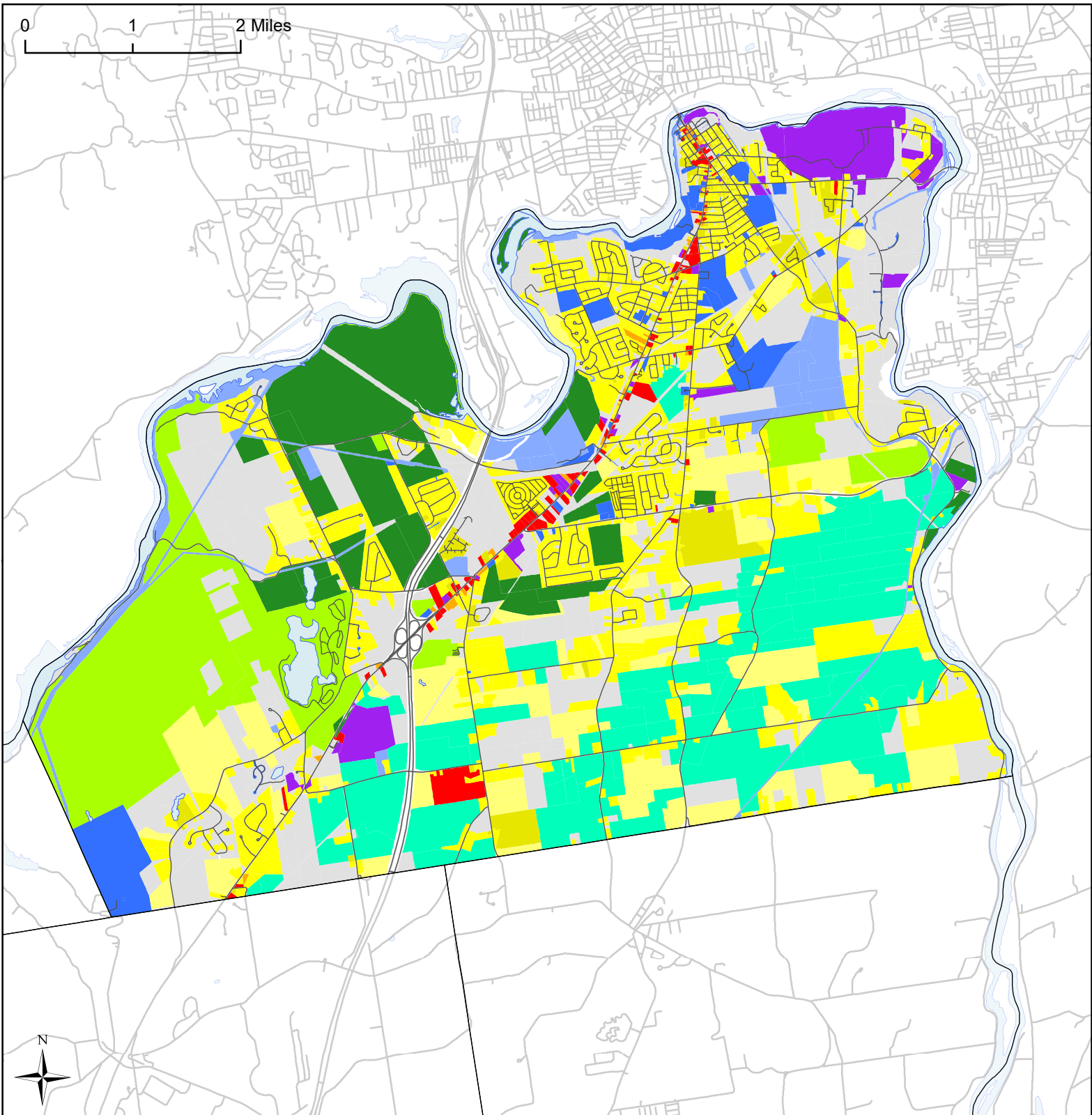


Per capita emissions (MTCO₂e*)

Town of Moreau	16
Saratoga County	14
Capital District	15

Source: Capital District 2010 Regional GHG Inventory

*Metric Tons Carbon Dioxide Equivalent






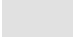











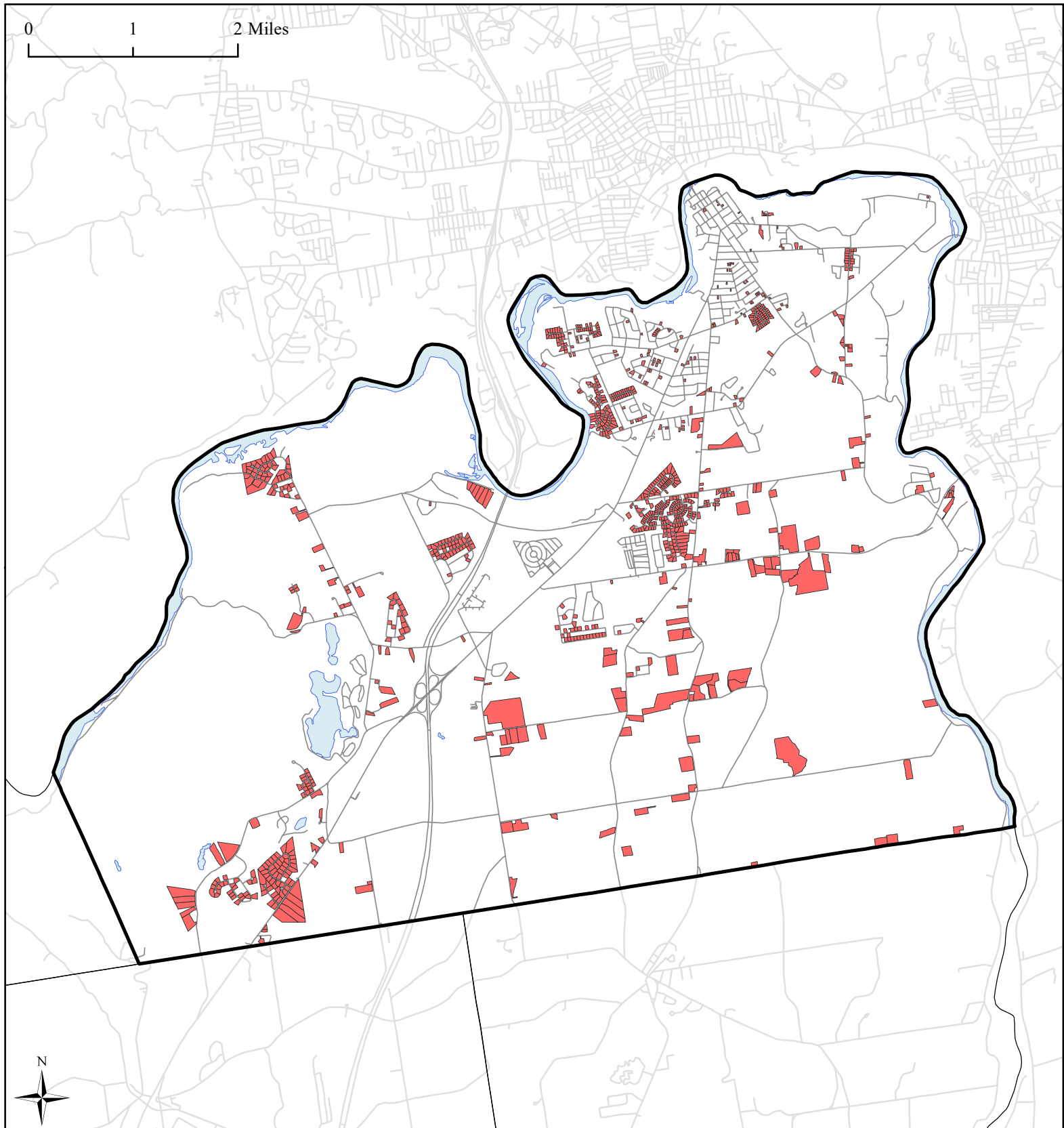
Town of Moreau, NY Land Use



Source: Saratoga County Real Property Services, 2016




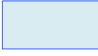

Land Use

 Agricultural	 Community Services	 Public Services and Utilities
 Outdoor Recreation	 Mixed-Use	 Vacant Land
 Wild, Forested and Conservation Lands	 Single Family	 Municipal Boundaries
 Commercial	 Multi-Family	 Water Bodies
 Industrial	 Large Lot Residential	 Roads



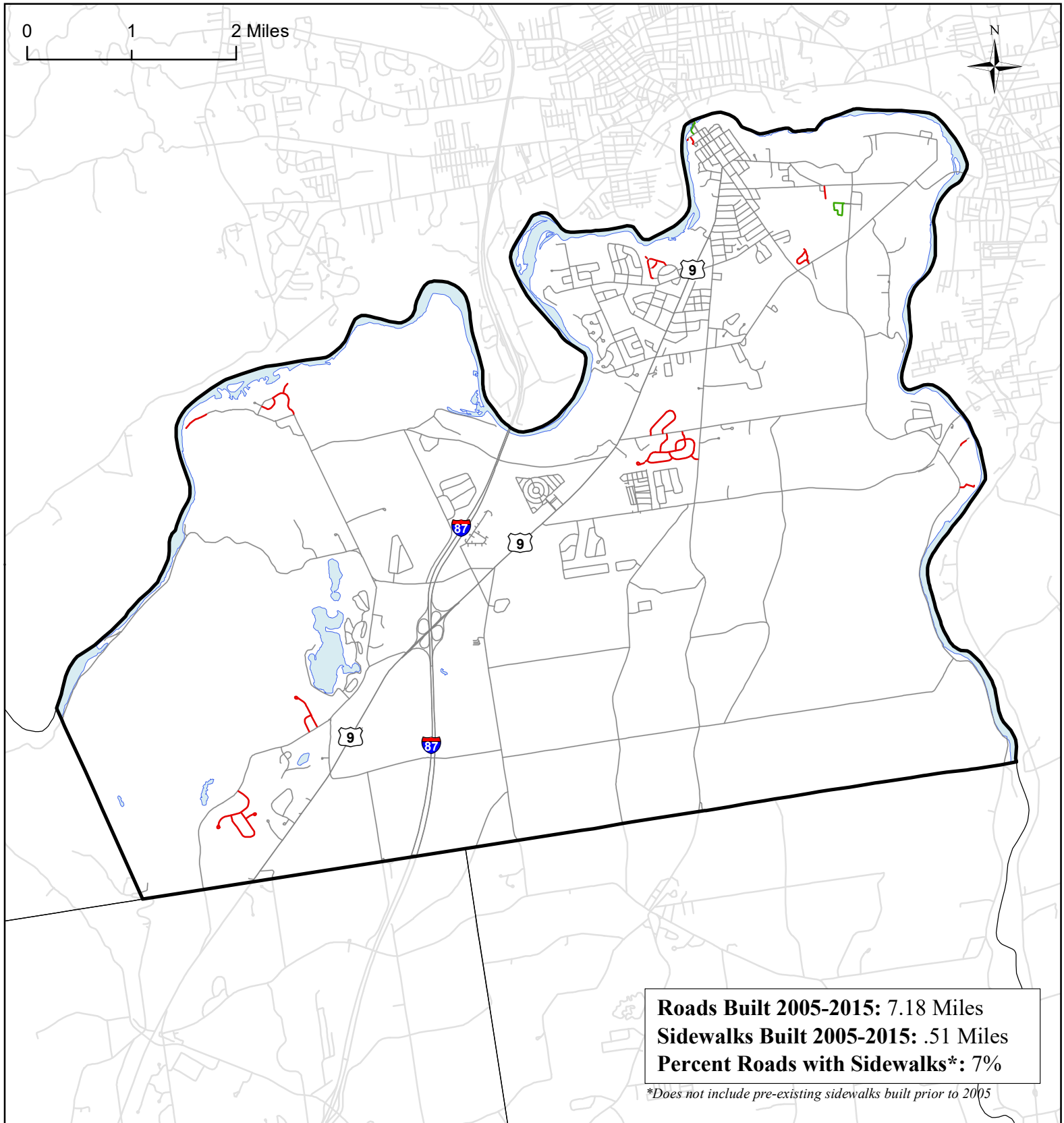
Town of Moreau, NY Single Family Homes Built 1995-2015



-  Single Family Homes Built 1995-2015
-  Moreau Boundary
-  Municipal Boundaries
-  Water Bodies
-  Roads

Source: Saratoga County tax parcel data, 2016

0 1 2 Miles



Roads Built 2005-2015: 7.18 Miles
Sidewalks Built 2005-2015: .51 Miles
Percent Roads with Sidewalks*: 7%

**Does not include pre-existing sidewalks built prior to 2005*

Town of Moreau, NY

Roads Built 2005-2015



**Roads Built
2005-2015**

— Sidewalk

— No Sidewalk

▭ Town of Moreau

▭ Municipal
Boundaries

▭ Water Bodies

— Roads Built Prior
to 2005

Source: NYS GIS Clearinghouse, GIS Program Office