



# Community Growth Profile

## Town of Milton, NY



The following Community Growth Profile provides information regarding development patterns in the Town of Milton, Saratoga County, NY. This report includes a current land use map, a map showing single family homes built in the last 20 years and new roads built over the last ten years. Also included are population and population projections, housing units, and greenhouse gas emissions data.

### Population/Projections

1980	1990	2000	2010	2020	2030	2040	2050
12,876	14,658	17,103	18,575	19,959	20,778	21,274	21,435

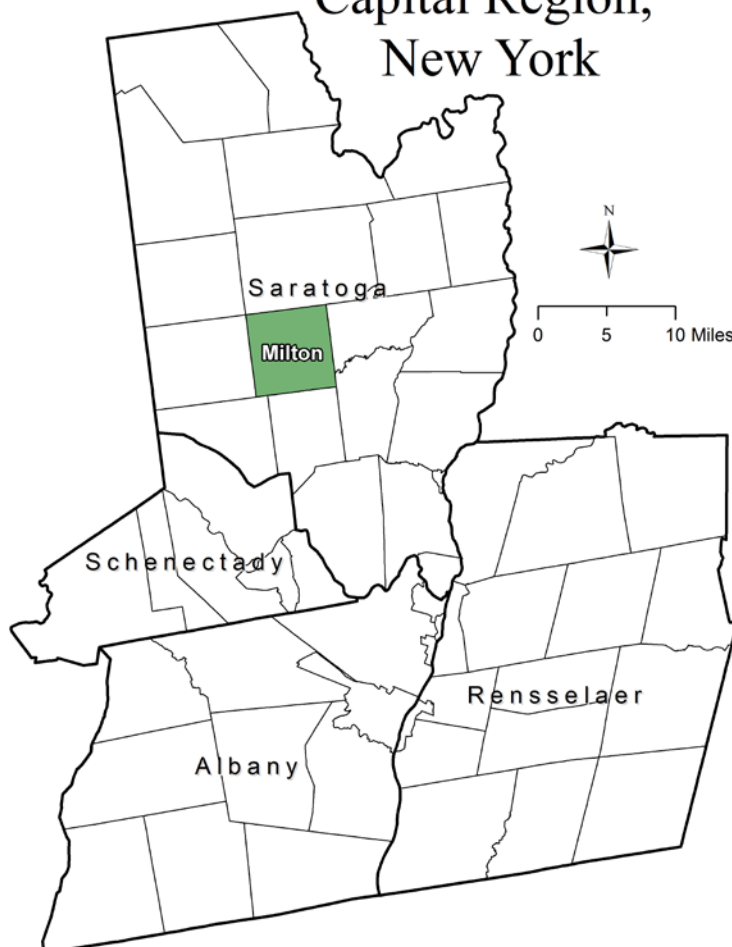
Source: U.S. Census 1980, 1990, 2000, 2010 ; CDRPC Projections

### Housing Units 1980-2015

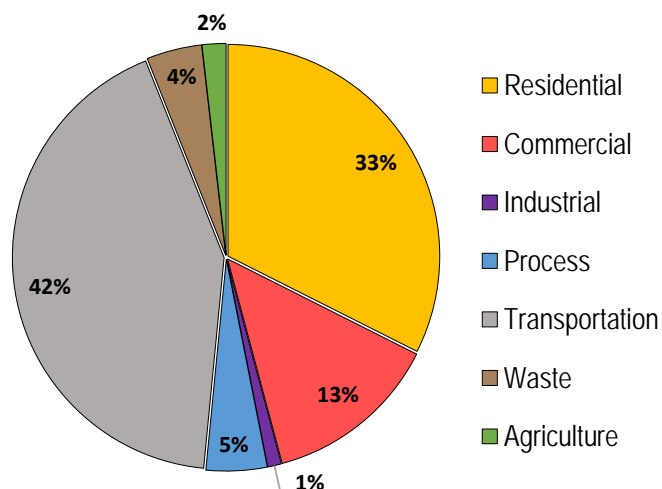
	1980	1990	2000	2010	2015
Total Housing Units	4,649	5,732	6,701	7,657	8,090

Source: U.S. Census 1980, 1990, 2000, 2010; U.S. Census Building Permit Survey 2011-15

### Capital Region, New York



### Greenhouse Gas Emissions by Sector

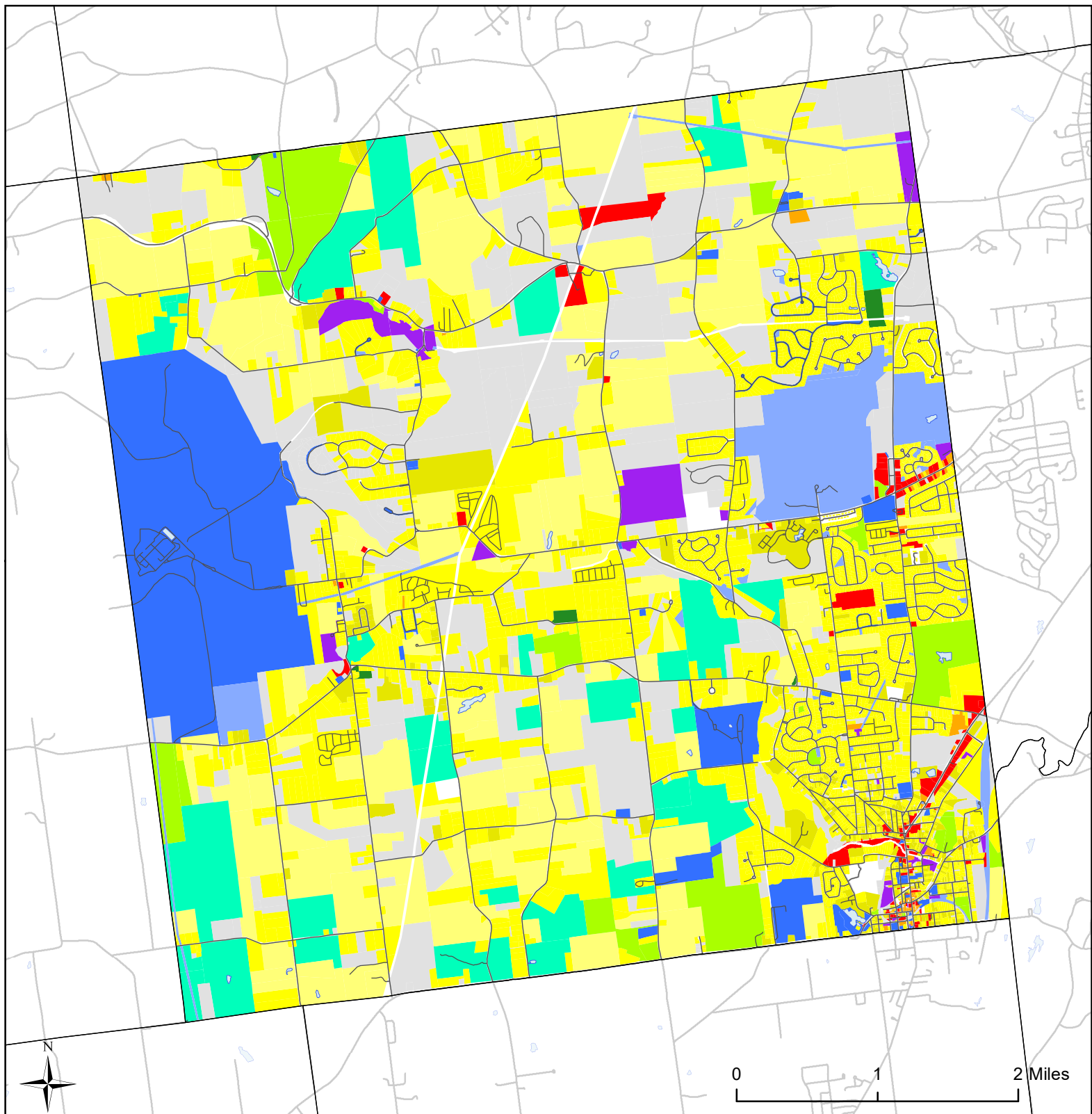


### Per capita emissions (MTCO<sub>2</sub>e\*)

Town of Milton	8
Saratoga County	14
Capital District	15

Source: Capital District 2010 Regional GHG Inventory

\*Metric Tons Carbon Dioxide Equivalent




## Town of Milton, NY Land Use



### Land Use

 Agricultural

 Outdoor Recreation

 Wild, Forested and  
Conservation Lands

 Commercial

 Industrial


 Community  
Services

 Mixed-Use

 Single Family


 Multi-Family

 Large Lot  
Residential

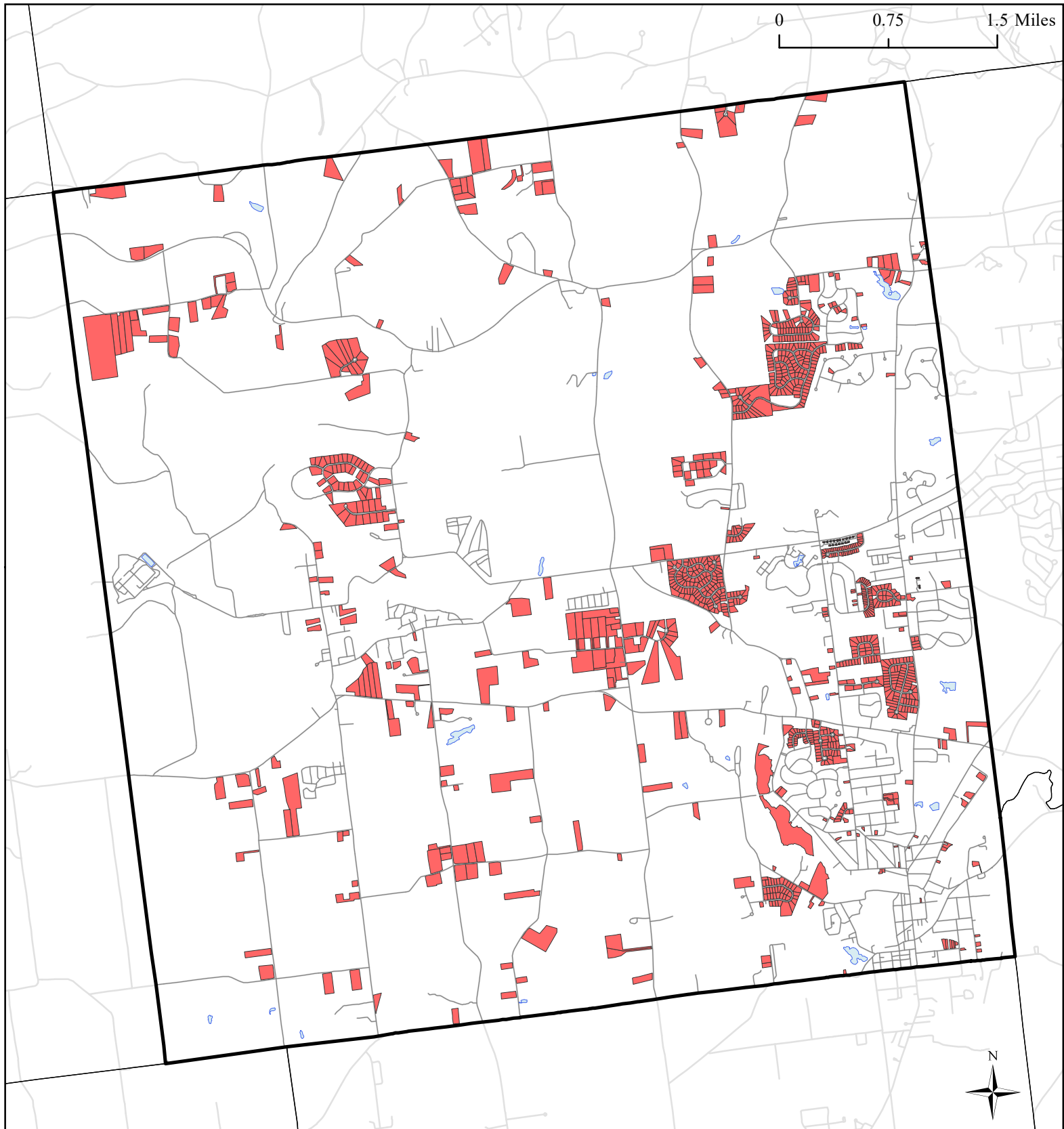
 Public Services and  
Utilities

 Vacant Land

 Water Bodies

 Municipal  
Boundaries


 Roads



# **Town of Milton, NY**

## **Single Family Homes Built 1995-2015**



 Single Family Homes  
Built 1995-2015

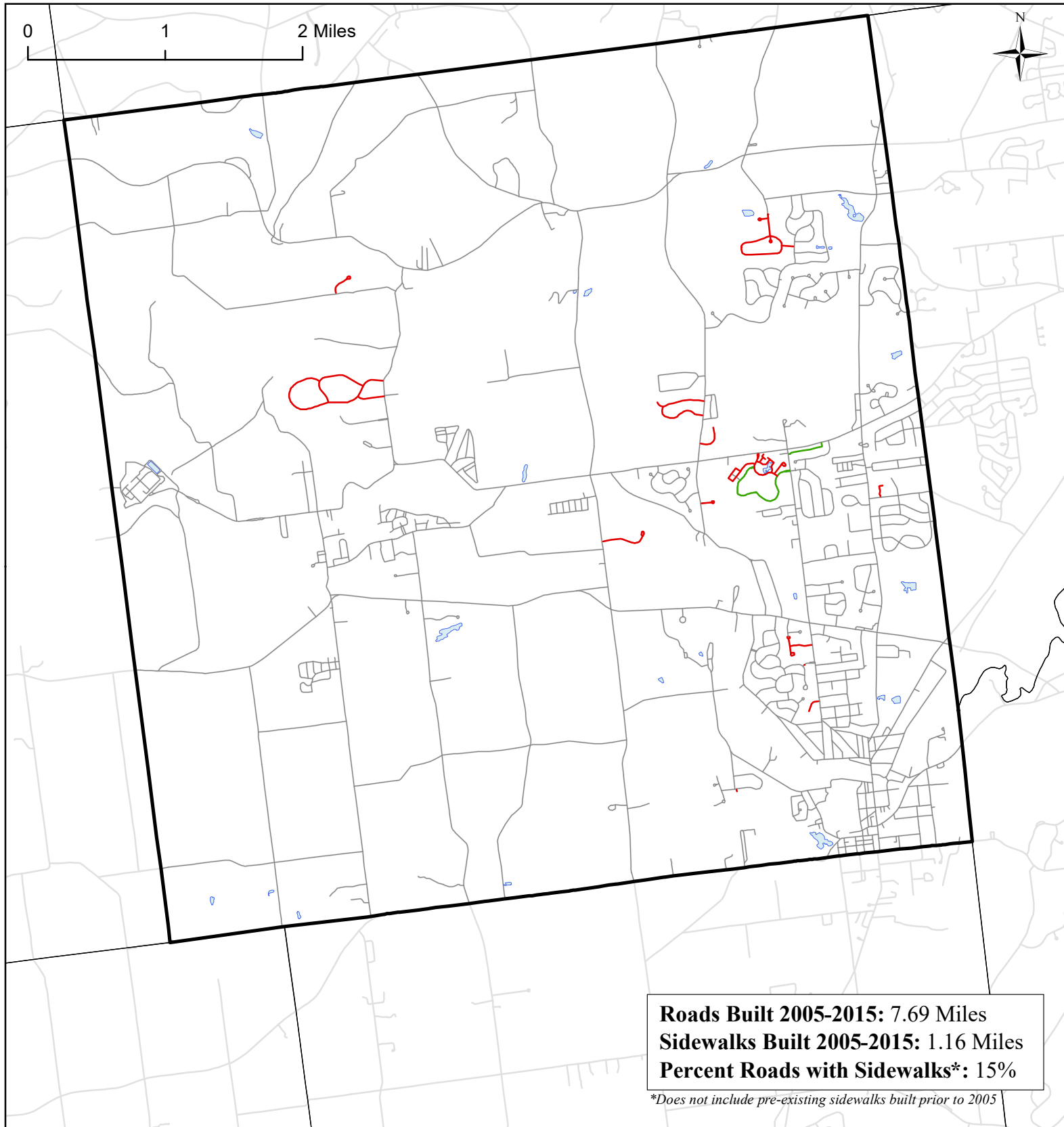
 Milton Boundary

 Municipal Boundaries

 Water Bodies

 Milton Roads

Source: Saratoga County tax parcel data, 2016



# **Town of Milton, NY** **Roads Built 2005-2015**



**Roads Built  
2005-2015**

— Sidewalk  
 — No Sidewalk

Town of Milton  
 Municipal Boundaries  
 Water Bodies  
 Roads Built Prior to 2005