



Community Growth Profile

Town of Malta, NY



The following Community Growth Profile provides information regarding development patterns in the Town of Malta, Saratoga County, NY. This report includes a current land use map, a map showing single family homes built in the last 20 years and new roads built over the last ten years. Also included are population and population projections, housing units, and greenhouse gas emissions data.

Population/Projections

1980	1990	2000	2010	2020	2030	2040	2050
6,968	11,709	13,005	14,765	16,146	17,151	17,612	17,743

Source: U.S. Census 1980, 1990, 2000, 2010 ; CDRPC Projections

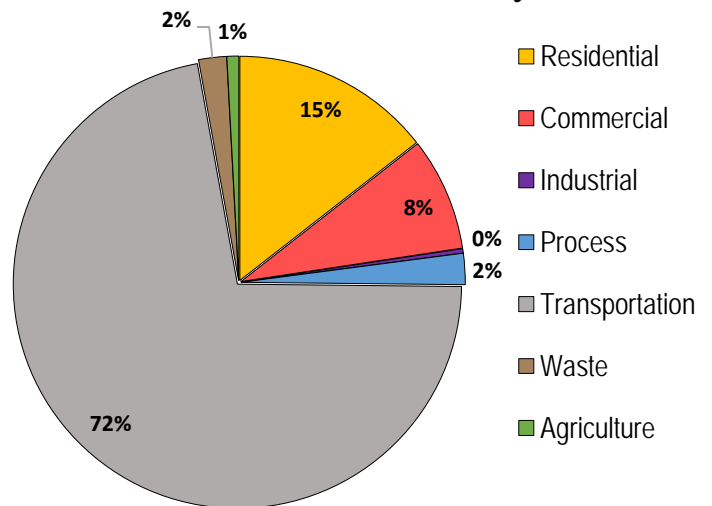
Housing Units 1980-2015

	1980	1990	2000	2010	2015
Total Housing Units	2,932	5,053	5,754	6,821	7,494

Source: U.S. Census 1980, 1990, 2000, 2010; U.S. Census Building Permit Survey 2011-15



Greenhouse Gas Emissions by Sector

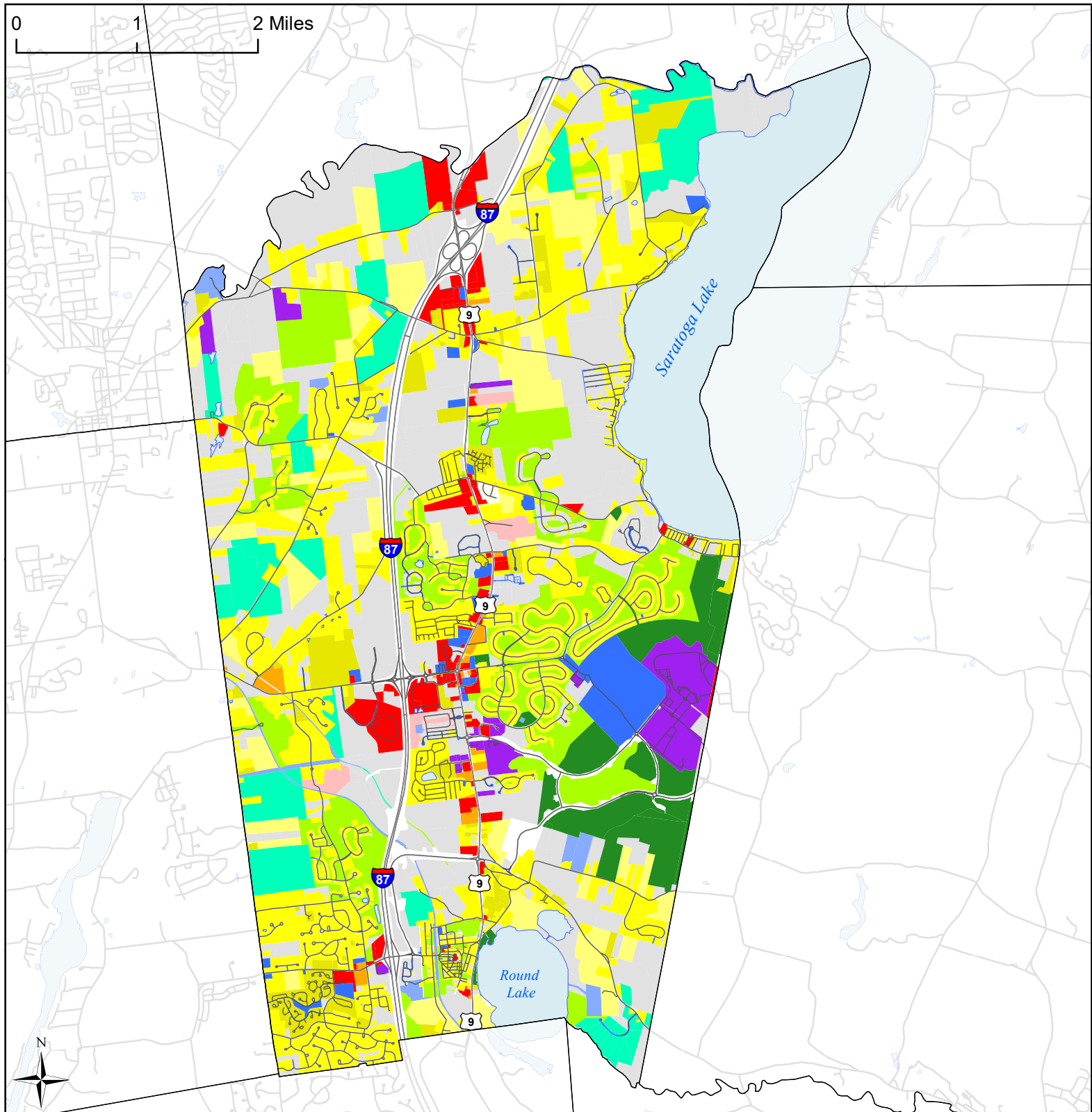


Per capita emissions (MTCO₂e*)

Town of Malta	17
Saratoga County	14
Capital District	15

Source: Capital District 2010 Regional GHG Inventory

*Metric Tons Carbon Dioxide Equivalent



Town of Malta, NY Land Use

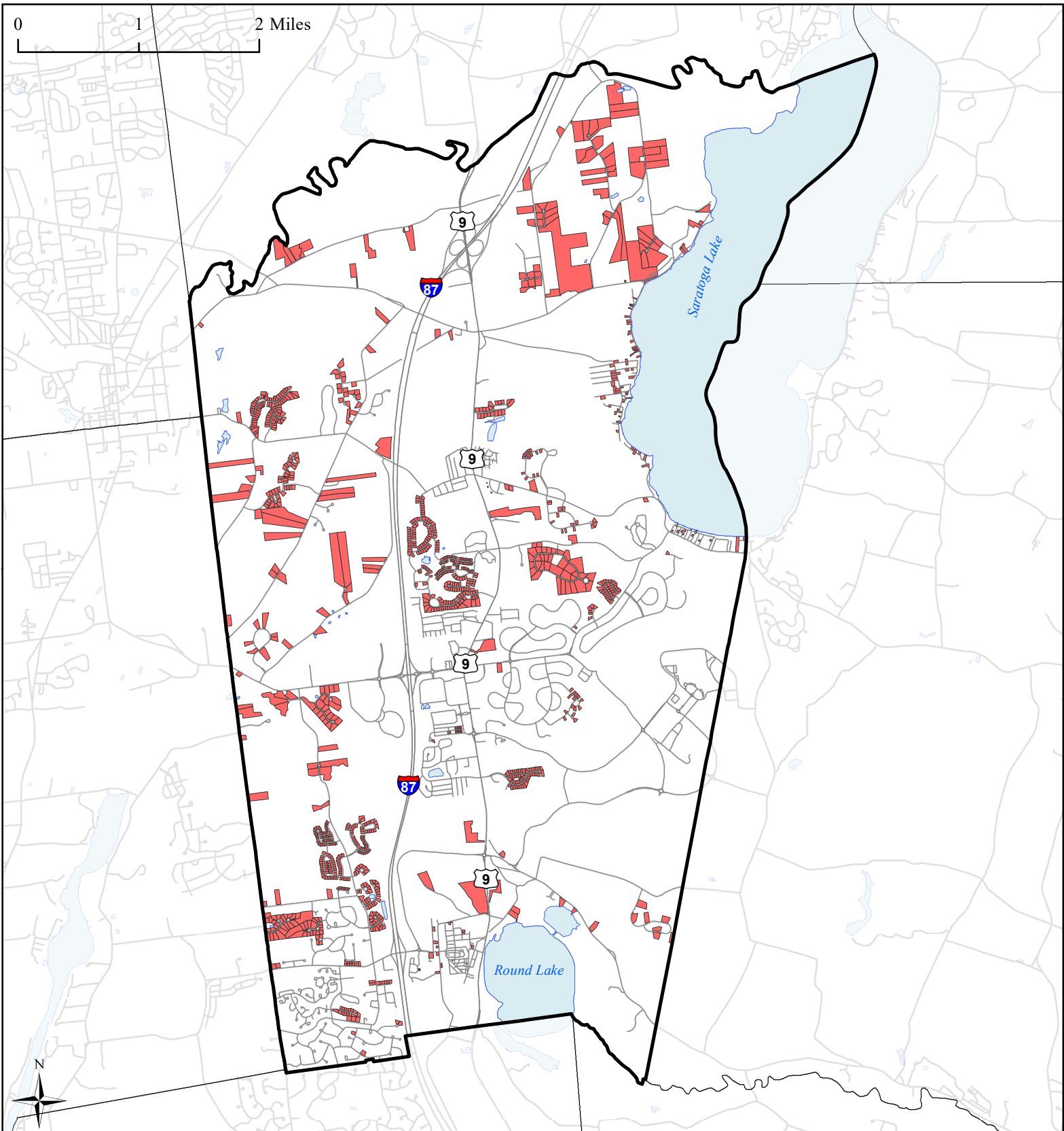


Land Use

- Agricultural
- Outdoor Recreation
- Wild, Forested and Conservation Lands
- Commercial
- Recreation and Entertainment
- Industrial
- Community Services
- Mixed-Use
- Single Family
- Multi-Family
- Large Lot Residential

- Public Services and Utilities
- Vacant Land
- Municipal Boundaries
- Water Bodies
- Roads




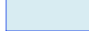

0 1 2 Miles



Town of Malta, NY

Single Family Homes Built 1995-2015



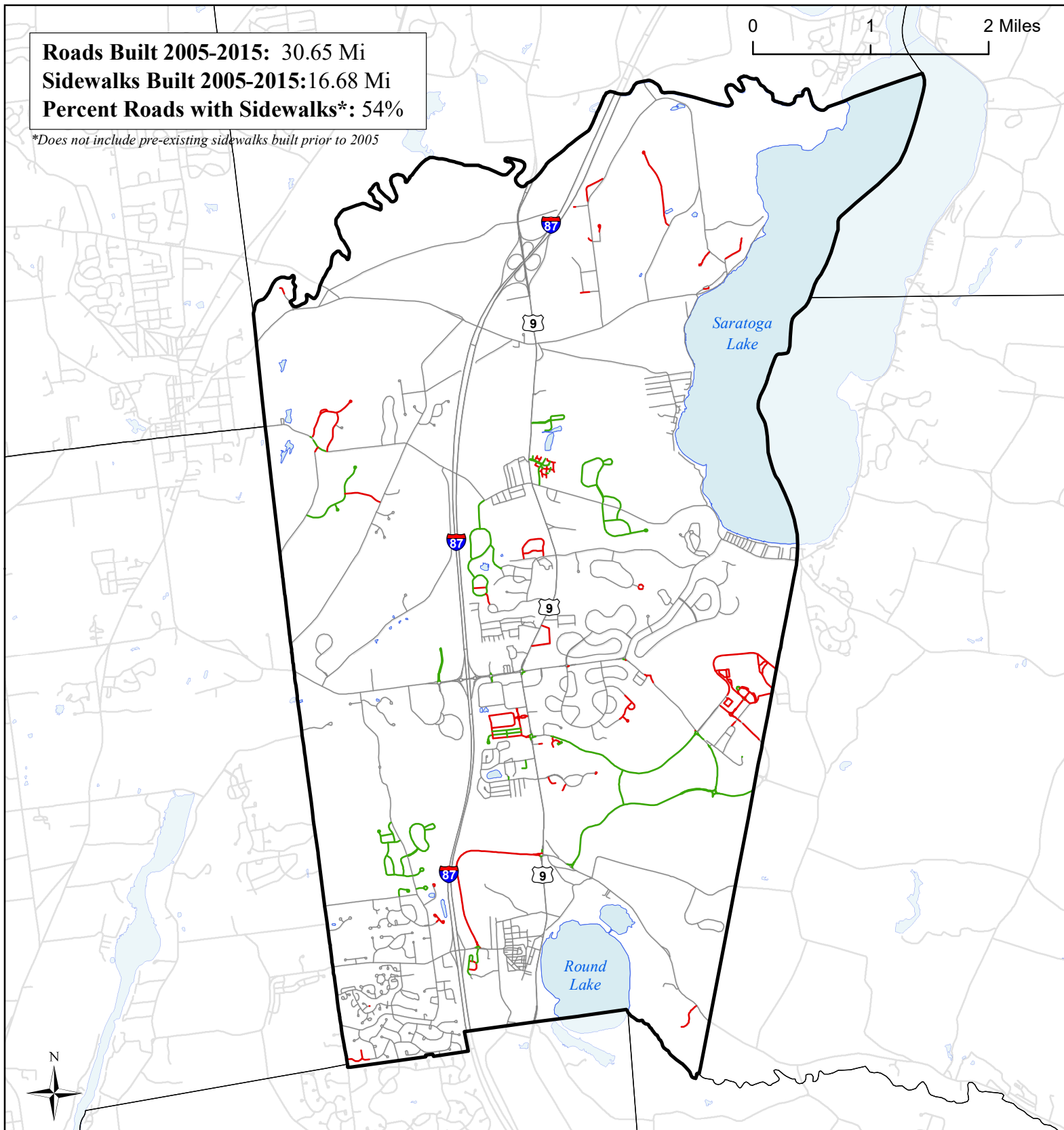
-  Single Family Homes Built 1995-2015
-  Malta Boundary
-  Municipal Boundaries
-  Water Bodies
-  Roads

Source: Saratoga County tax parcel data, 2016

Roads Built 2005-2015: 30.65 Mi
Sidewalks Built 2005-2015: 16.68 Mi
Percent Roads with Sidewalks*: 54%

**Does not include pre-existing sidewalks built prior to 2005*

0 1 2 Miles



Town of Malta, NY

Roads Built 2005-2015



Roads Built 2005-2015

— Sidewalk
 — No Sidewalk

— Town of Malta

— Municipal
Boundaries

— Water Bodies

— Roads Built Prior
to 2005