



Community Growth Profile

Town of Guilderland, NY



The following Community Growth Profile provides information regarding development patterns in the Town of Guilderland, Albany County, NY. This report includes a current land use map, a map showing single family homes built in the last 20 years and new roads built over the last ten years. Also included are population and population projections, housing units, and greenhouse gas emissions data.

Population/Projections

1980	1990	2000	2010	2020	2030	2040	2050
26,515	30,011	34,045	35,303	36,536	37,594	38,151	38,403

Source: U.S. Census 1980, 1990, 2000, 2010 ; CDRPC Projections

Housing Units 1980-2015

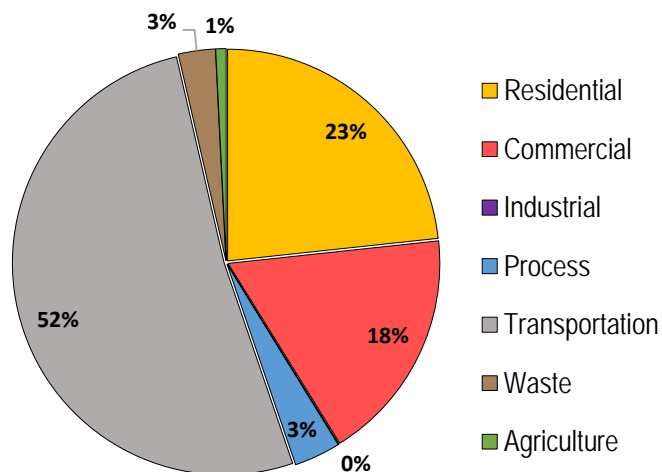
	1980	1990	2000	2010	2015
Total Housing Units	9,813	12,106	13,928	15,029	15,383

Source: U.S. Census 1980, 1990, 2000, 2010; U.S. Census Building Permit Survey 2011-15

Capital Region, New York



Greenhouse Gas Emissions by Sector

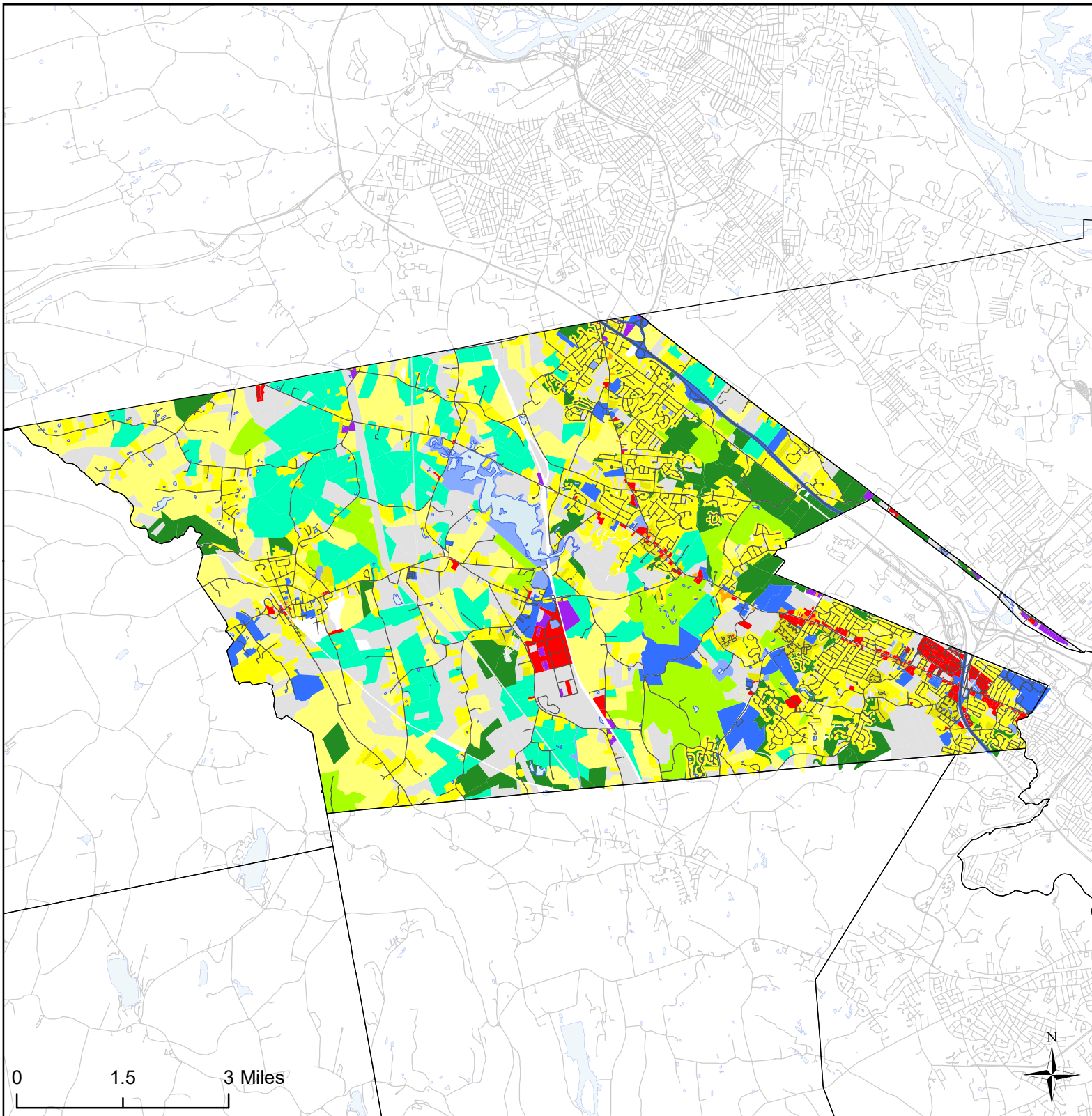


Per capita emissions (MTCO₂e*)

Town of Guilderland	11
Albany County	21
Capital District	15

Source: Capital District 2010 Regional GHG Inventory

*Metric Tons Carbon Dioxide Equivalent



Town of Guilderland, NY Land Use



Land Use

Agricultural

Outdoor Recreation

Wild, Forested and Conservation Lands

Commercial

Recreation and Entertainment

Industrial

Community Services

Mixed-Use

Single Family

Multi-Family

Large Lot Residential

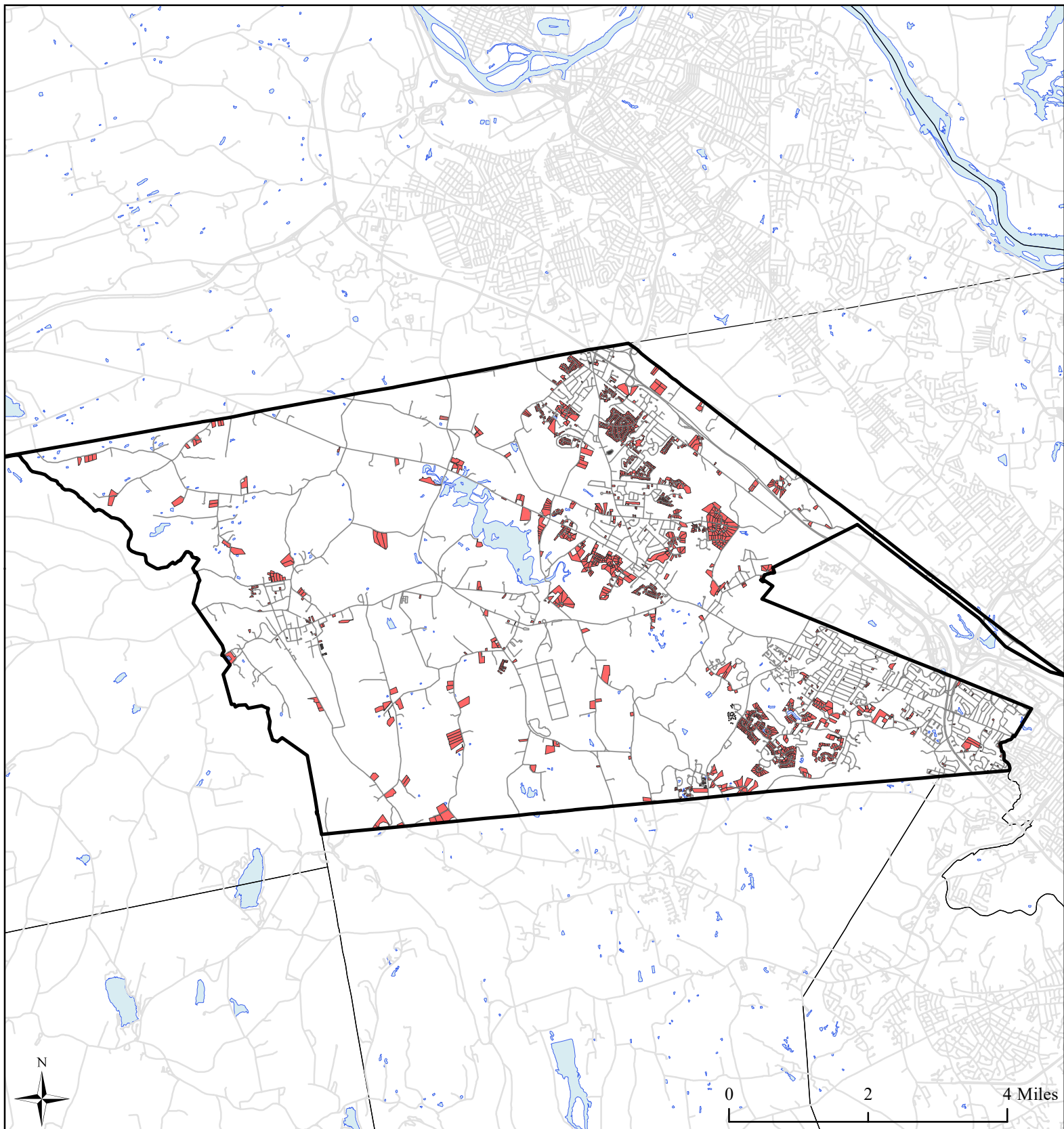
Public Services and Utilities

Vacant Land

Water Bodies



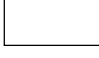
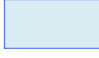

Municipal Boundaries

Roads

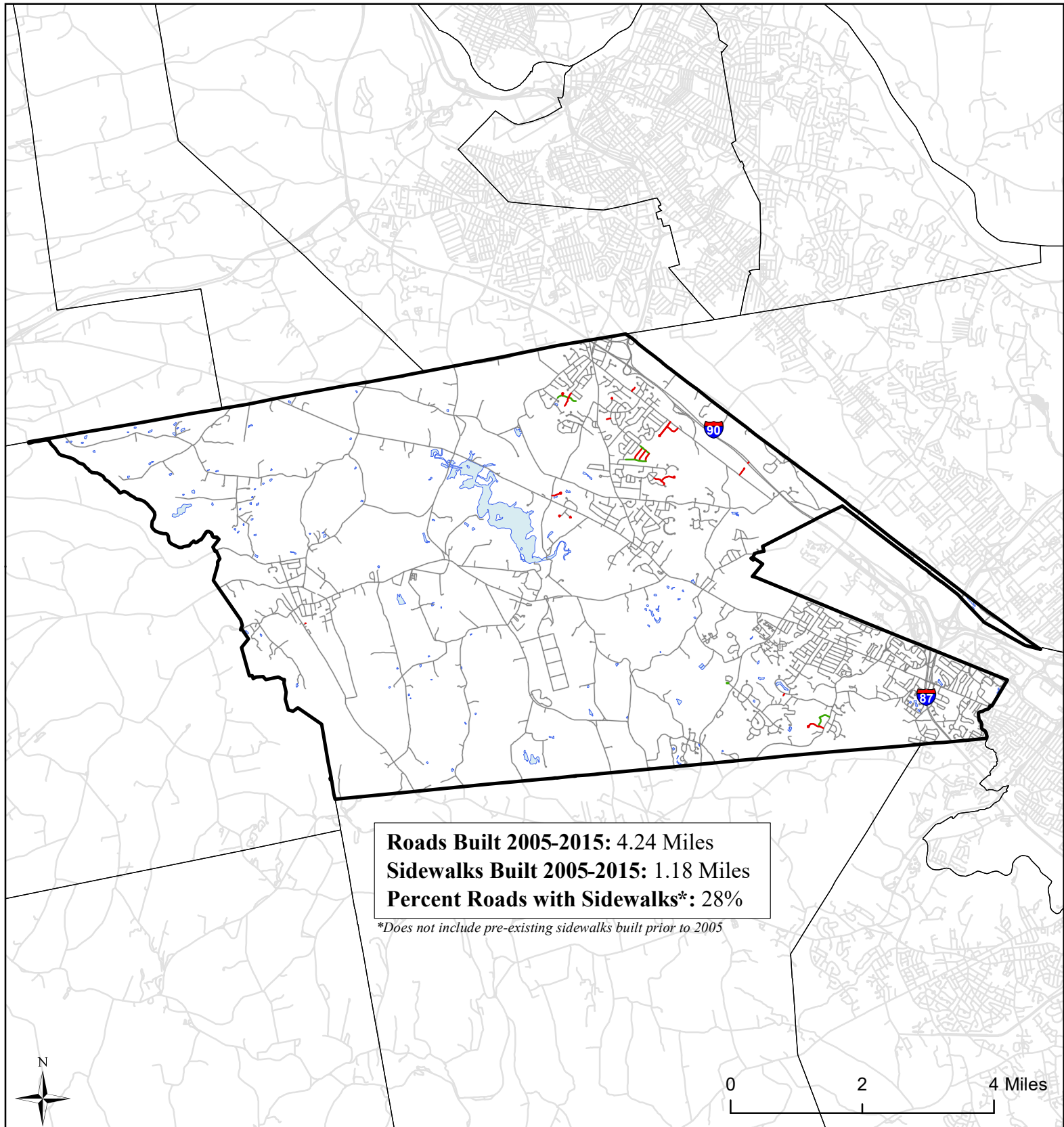


Town of Guilderland, NY Single Family Homes Built 1995-2015



-  Single Family Homes Built 1995-2015
-  Guilderland Boundary
-  Municipal Boundaries
-  Water Bodies
-  Roads

Source: Albany County tax parcel data; NYS GIS Program Office 2016



Town of Guilderland, NY Roads Built 2005-2015



Roads Built 2005-2015

— Sidewalk

— No Sidewalk

□ Town of
Guilderland

□ Municipal
Boundaries

□ Water Bodies

— Roads Built Prior
to 2005

Source: NYS GIS Clearinghouse, GIS Program Office