



Community Growth Profile

Village of Green Island, NY



The following Community Growth Profile provides information regarding development patterns in the Village of Green Island, Albany County, NY. This report includes a current land use map, a map showing single family homes built in the last 20 years and new roads built over the last ten years. Also included are population and population projections, housing units, and greenhouse gas emissions data.

Population/Projections

1980	1990	2000	2010	2020	2030	2040	2050
2,696	2,490	2,278	2,620	2,608	2,613	2,588	2,538

Source: U.S. Census 1980, 1990, 2000, 2010 ; CDRPC Projections

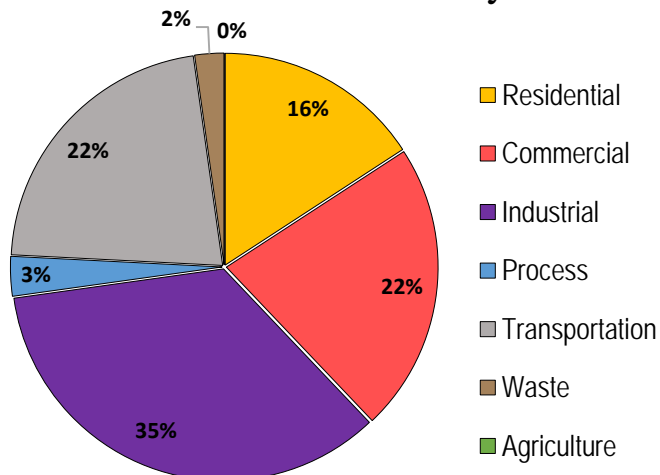
Housing Units 1980-2015

	1980	1990	2000	2010	2015
Total Housing Units	1,132	1,141	1,188	1,408	1,418

Source: U.S. Census 1980, 1990, 2000, 2010; U.S. Census Building Permit Survey 2011-15



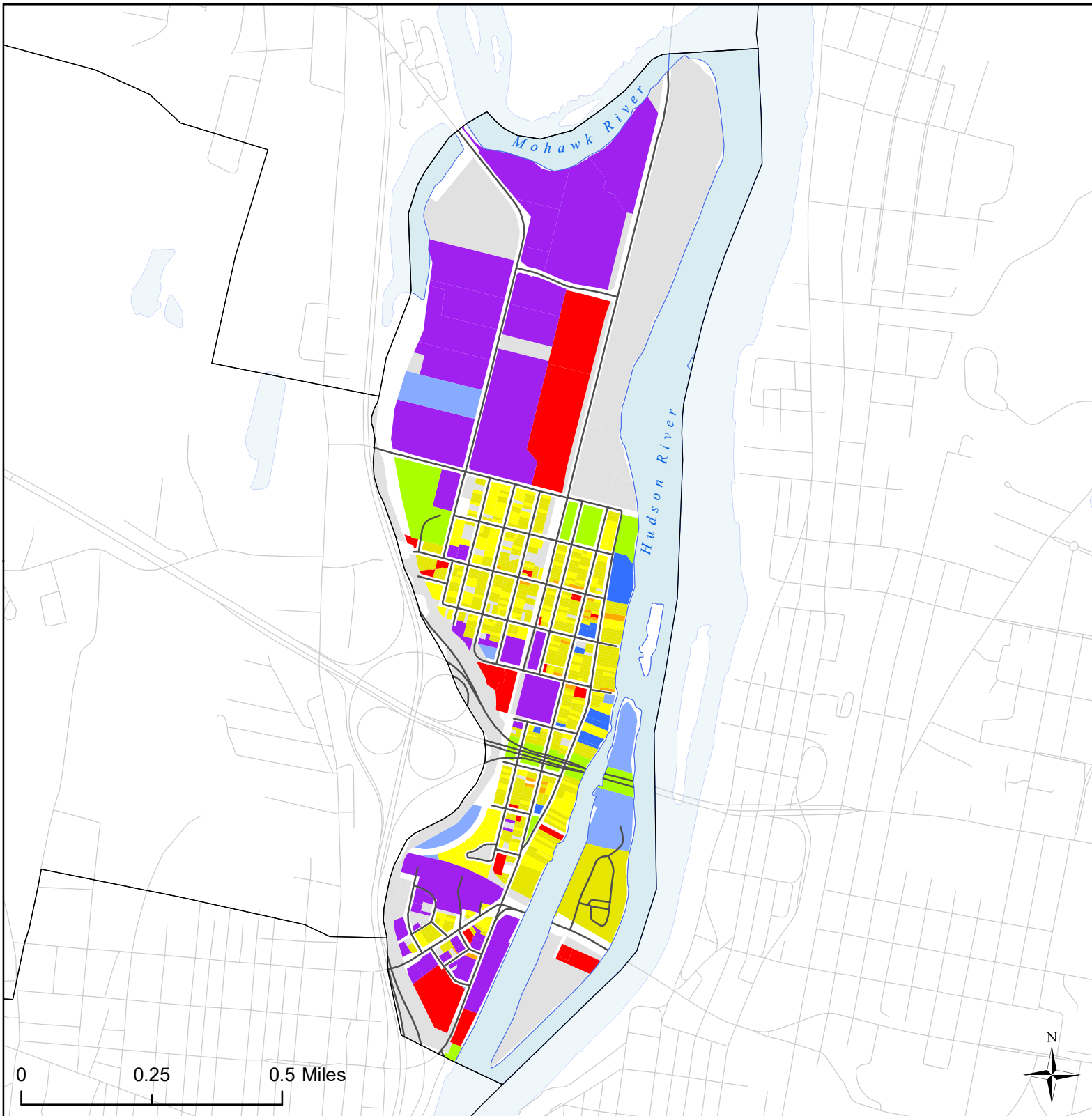
Greenhouse Gas Emissions by Sector



Per capita emissions (MTCO₂e*)

Village of Green Island	14
Albany County	21
Capital District	15

Source: Capital District 2010 Regional GHG Inventory
*Metric Tons Carbon Dioxide Equivalent



Village of Green Island, NY Land Use



Land Use

Agricultural

Outdoor Recreation

Wild, Forested and Conservation Lands

Commercial

Recreation and Entertainment

Industrial

Community Services

Mixed-Use

Single Family

Multi-Family

Large Lot Residential

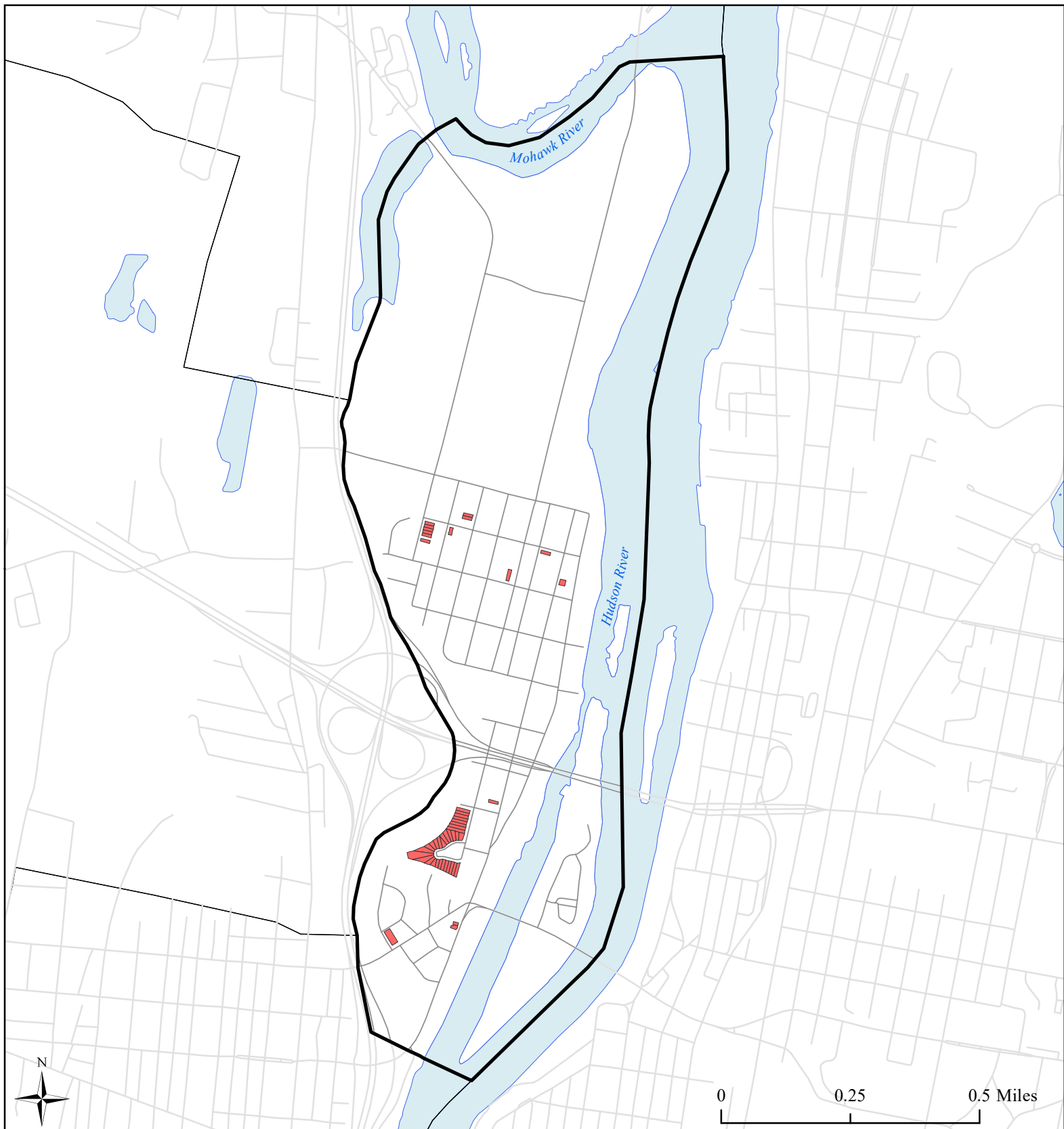
Public Services and Utilities

Vacant Land

Water Bodies

Municipal Boundaries

Roads

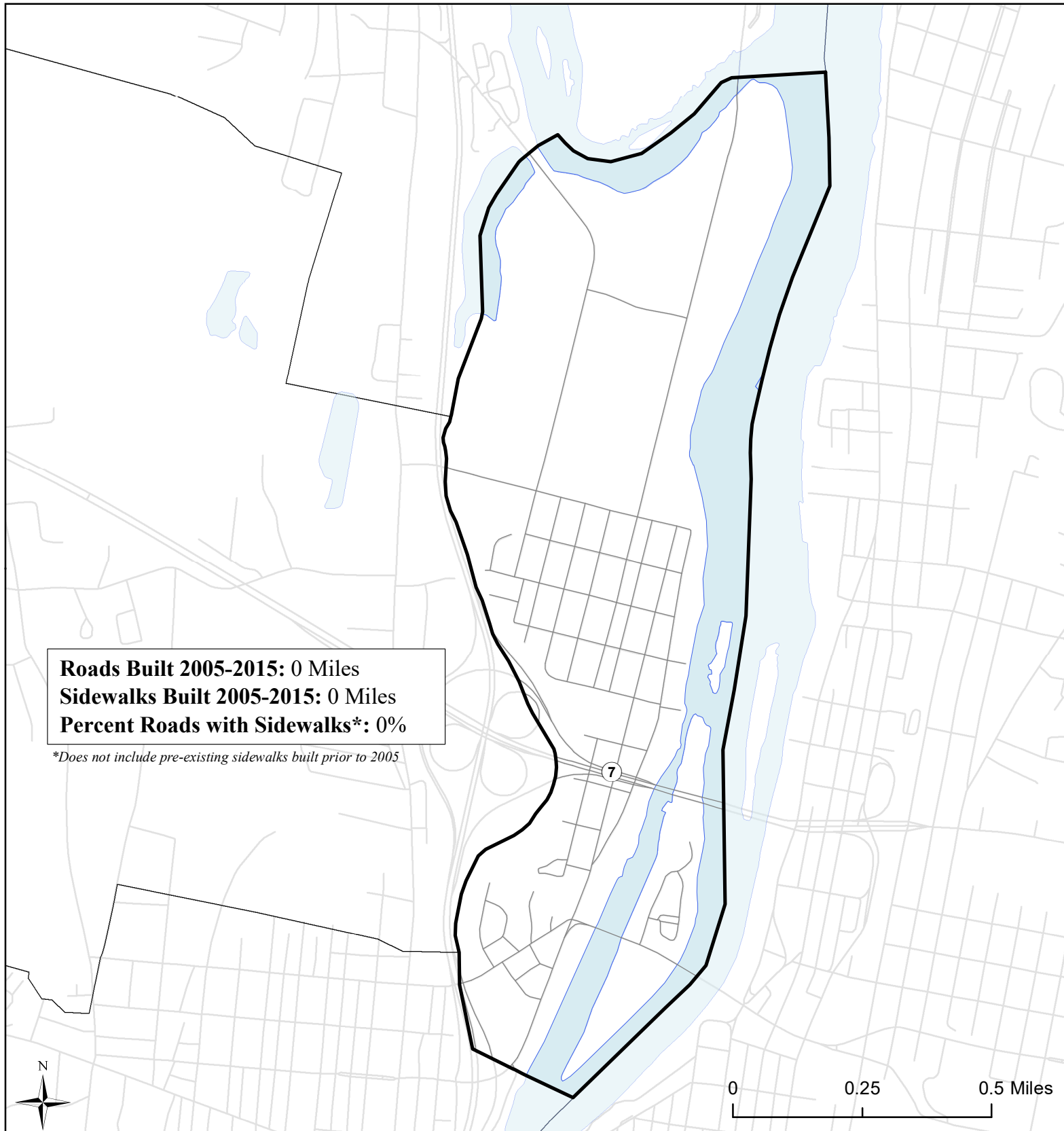


Village of Green Island, NY **Single Family Homes Built** **1995-2015**



- Single Family Homes Built 1995-2015
- Green Island Boundary
- Municipal Boundaries
- Water Bodies
- Roads

Source: Albany County tax parcel data; NYS GIS Program Office 2016



Village of Green Island, NY

Roads Built 2005-2015



Roads Built 2005-2015

— Sidewalk

— No Sidewalk

Village of Green Island

Municipal Boundaries

Water Bodies

Roads Built Prior to 2005