



Community Growth Profile

Town of Grafton, NY



The following Community Growth Profile provides information regarding development patterns in the Town of Grafton, Rensselaer County, NY. This report includes a current land use map, a map showing single family homes built in the last 20 years and new roads built over the last ten years. Also included are population and population projections, housing units, and greenhouse gas emissions data.

Population/Projections

1980	1990	2000	2010	2020	2030	2040	2050
1,665	1,917	1,987	2,130	2,159	2,182	2,202	2,219

Source: U.S. Census 1980, 1990, 2000, 2010 ; CDRPC Projections

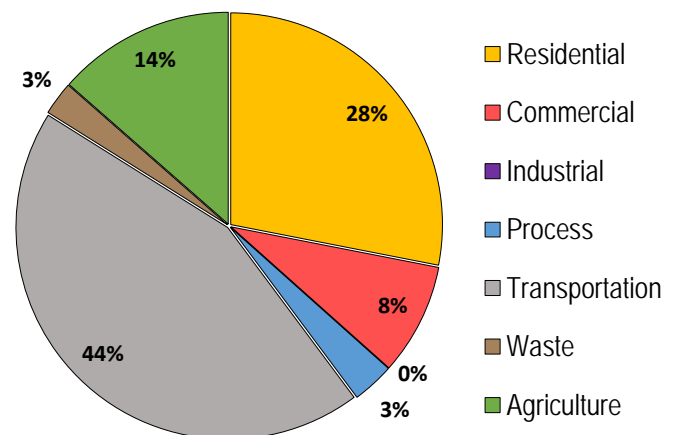
Housing Units 1980-2015

	1980	1990	2000	2010	2015
Total Housing Units	825	866	1,059	1,188	1,225

Source: U.S. Census 1980, 1990, 2000, 2010; U.S. Census Building Permit Survey 2011-15



Greenhouse Gas Emissions by Sector

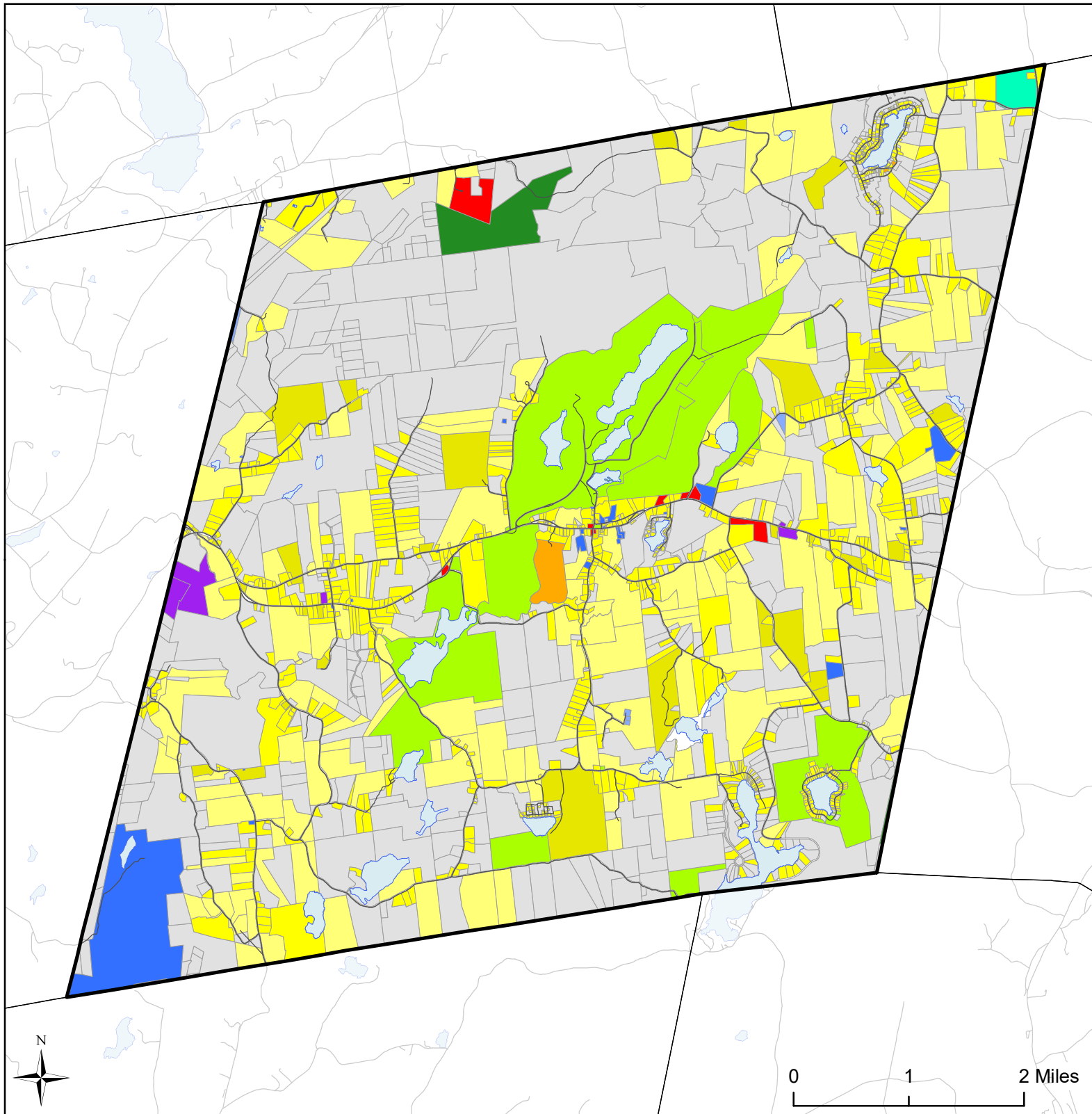


Per capita emissions (MTCO₂e*)

Town of Grafton	12
Rensselaer County	11
Capital District	15

Source: Capital District 2010 Regional GHG Inventory

*Metric Tons Carbon Dioxide Equivalent



Town of Grafton, NY Land Use

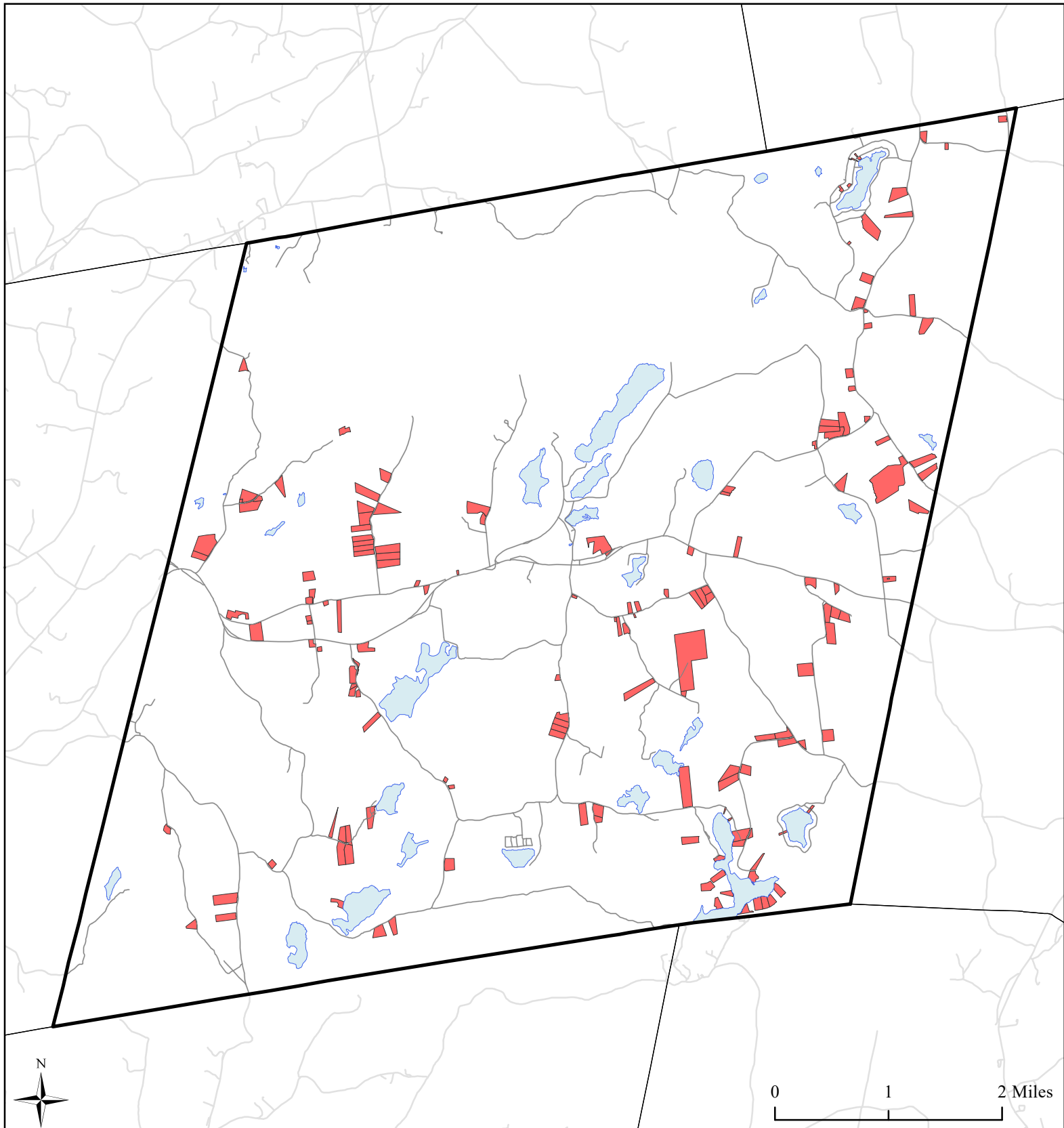


Land Use

- Agricultural
- Outdoor Recreation
- Wild, Forested and Conservation Lands
- Commercial

- Industrial
- Community Services
- Mixed-Use
- Single Family
- Multi-Family
- Large Lot Residential

- Public Services and Utilities
- Vacant Land
- Town of Grafton
- Municipal Boundaries
- Water Bodies
- Roads




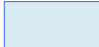



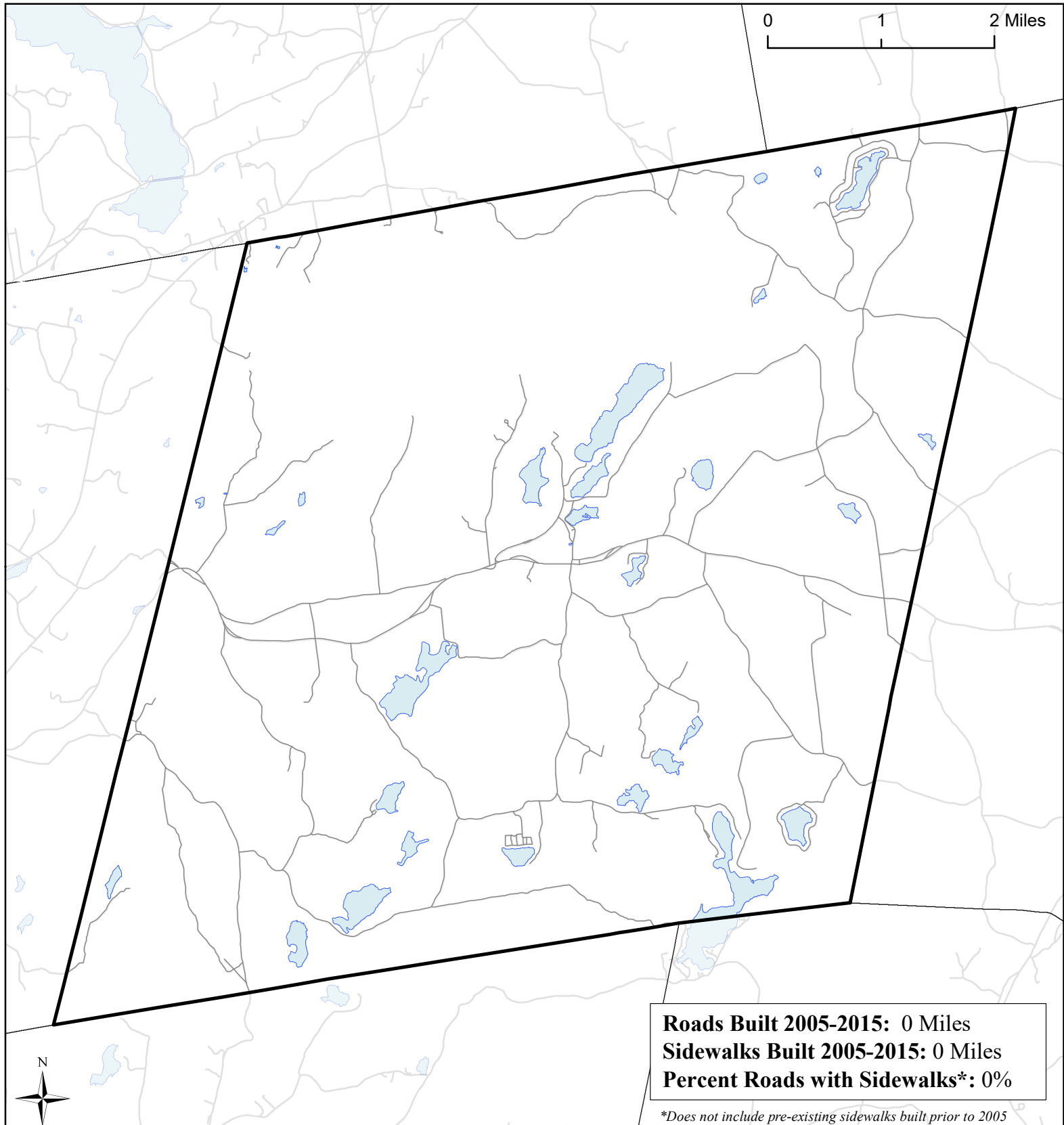
Town of Grafton, NY

Single Family Homes Built

1995-2015



-  Single Family Homes Built 1995-2015
-  Grafton Boundary
-  Municipal Boundaries
-  Water Bodies
-  Roads



Roads Built 2005-2015: 0 Miles
Sidewalks Built 2005-2015: 0 Miles
Percent Roads with Sidewalks*: 0%

**Does not include pre-existing sidewalks built prior to 2005*

Town of Grafton, NY **Roads Built 2005-2015**



Roads Built 2005-2015

— Sidewalk

— No Sidewalk

□ Town of Grafton

□ Municipal
Boundaries

□ Water Bodies

— Roads Built Prior
to 2005

Source: NYS GIS Clearinghouse, GIS Program Office