



Community Growth Profile

Town of Galway, NY



The following Community Growth Profile provides information regarding development patterns in the Town of Galway, Saratoga County, NY. This report includes a current land use map, a map showing single family homes built in the last 20 years and new roads built over the last ten years. Also included are population and population projections, housing units, and greenhouse gas emissions data.

Population/Projections

1980	1990	2000	2010	2020	2030	2040	2050
3,018	3,266	3,589	3,545	3,696	3,755	3,693	3,714

Source: U.S. Census 1980, 1990, 2000, 2010 ; CDRPC Projections

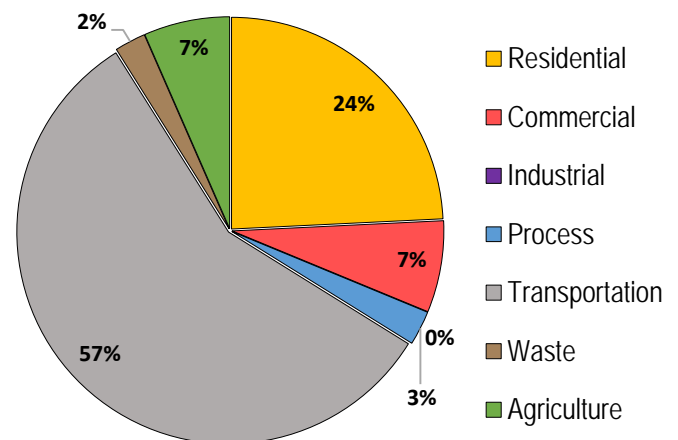
Housing Units 1980-2015

	1980	1990	2000	2010	2015
Total Housing Units	1,442	1,699	1,879	2,016	2,059

Source: U.S. Census 1980, 1990, 2000, 2010; U.S. Census Building Permit Survey 2011-15



Greenhouse Gas Emissions by Sector

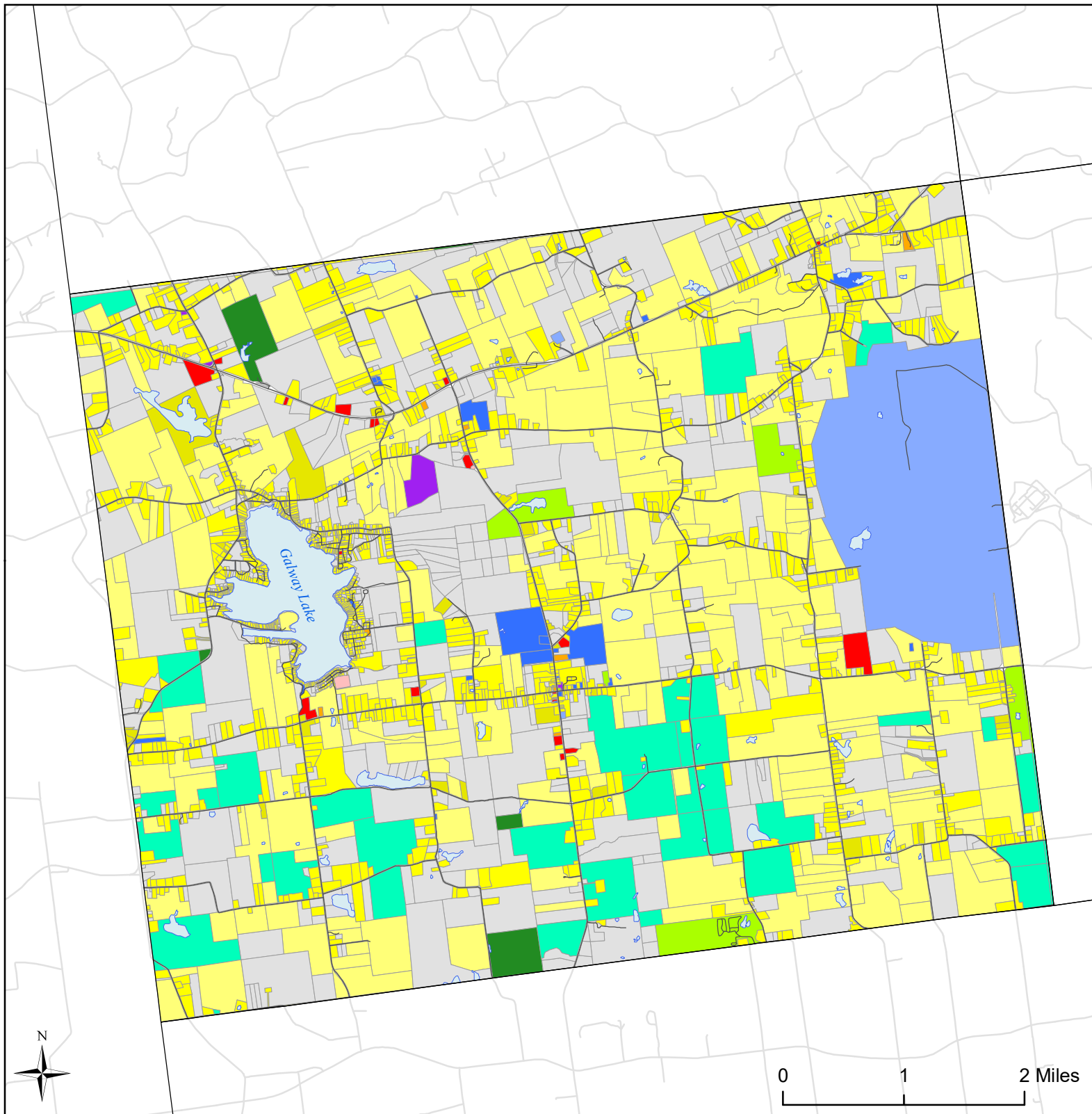


Per capita emissions (MTCO₂e*)

Town of Galway	15
Saratoga County	14
Capital District	15

Source: Capital District 2010 Regional GHG Inventory

*Metric Tons Carbon Dioxide Equivalent



Town of Galway, NY Land Use



Land Use


 Agricultural

 Outdoor Recreation

 Wild, Forested and
Conservation Lands

 Commercial

 Recreation and
Entertainment

 Industrial

 Community
Services

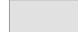
 Mixed-Use

 Single Family

 Multi-Family

 Large Lot
Residential

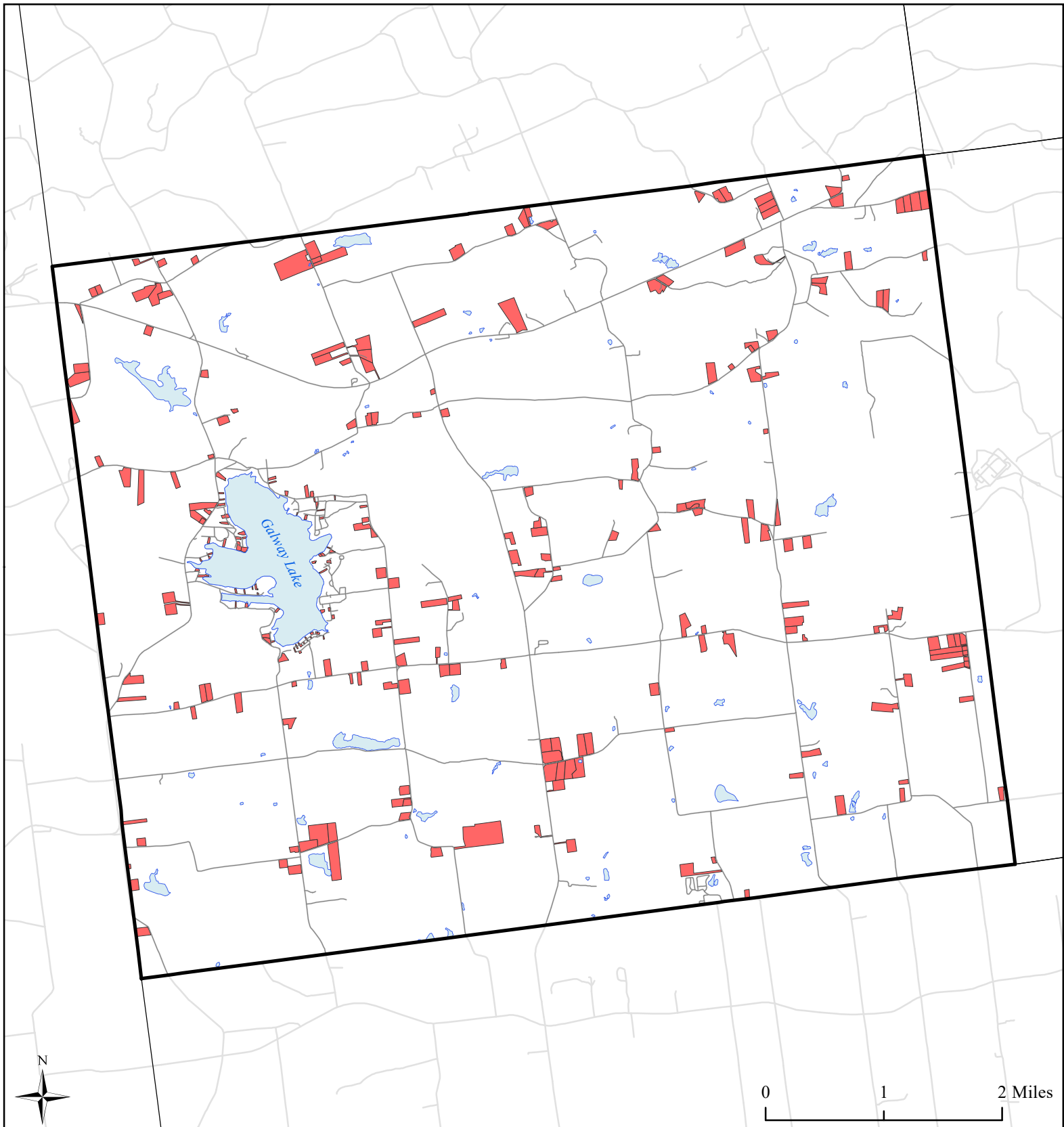
 Public Services and
Utilities

 Vacant Land

 Water Bodies

 Municipal
Boundaries

 Roads





Town of Galway, NY

Single Family Homes Built

1995-2015



 Single Family Homes
Built 1995-2015

 Galway Boundary

 Municipal Boundaries

 Water Bodies

 Roads

Source: Saratoga County tax parcel data, 2016

0 1 2 Miles



Roads Built 2005-2015: 0 Miles
Sidewalks Built 2005-2015: 0 Miles
Percent Roads with Sidewalks*: 0%

**Does not include pre-existing sidewalks built prior to 2005*

Town of Galway, NY

Roads Built 2005-2015



**Roads Built
2005-2015**

— Sidewalk

— No Sidewalk

□ Town of Galway

□ Municipal
Boundaries

□ Water Bodies

— Roads Built Prior
to 2005

Source: NYS GIS Clearinghouse, GIS Program Office