



Community Growth Profile Town of East Greenbush, NY



The following Community Growth Profile provides information regarding development patterns in the Town of East Greenbush, Rensselaer County, NY. This report includes a current land use map, a map showing single family homes built in the last 20 years and new roads built over the last ten years. Also included are population and population projections, housing units, and greenhouse gas emissions data.

Population/Projections

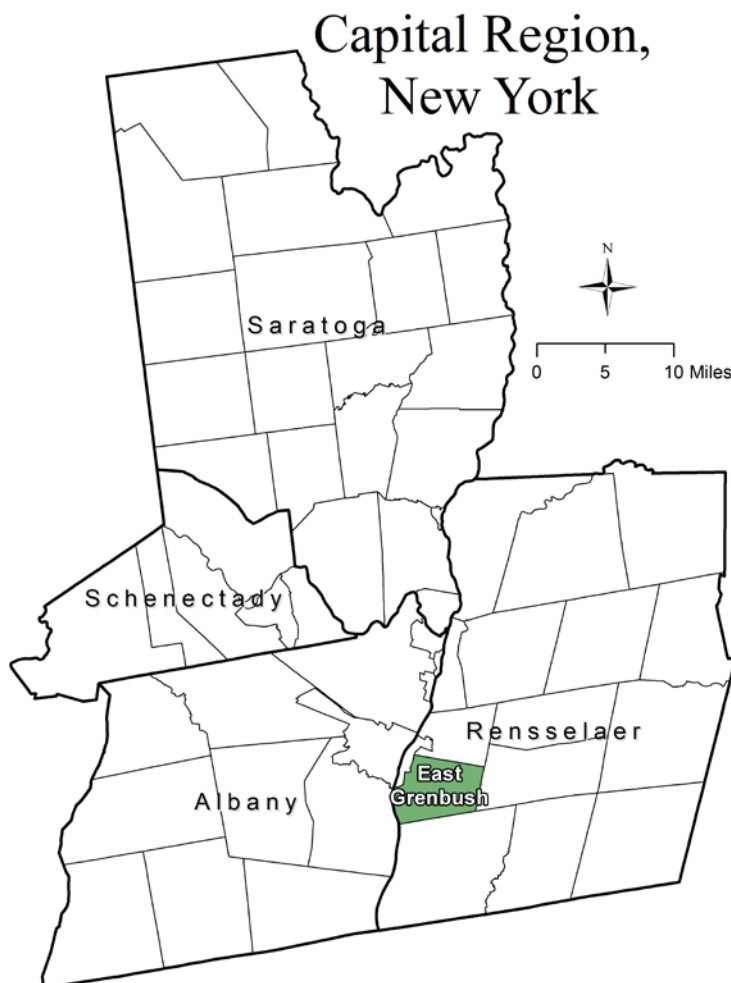
| 1980 | 1990 | 2000 | 2010 | 2020 | 2030 | 2040 | 2050 |
|--------|--------|--------|--------|--------|--------|--------|--------|
| 12,913 | 14,076 | 15,560 | 16,473 | 16,473 | 17,224 | 17,542 | 17,801 |

Source: U.S. Census 1980, 1990, 2000, 2010 ; CDRPC Projections

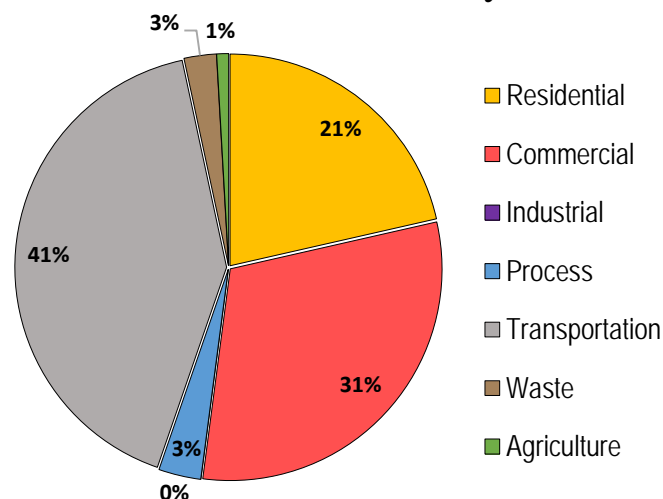
Housing Units 1980-2015

| | 1980 | 1990 | 2000 | 2010 | 2015 |
|---------------------|-------|-------|-------|-------|-------|
| Total Housing Units | 4,600 | 5,556 | 6,281 | 7,006 | 7,075 |

Source: U.S. Census 1980, 1990, 2000, 2010; U.S. Census Building Permit Survey 2011-15



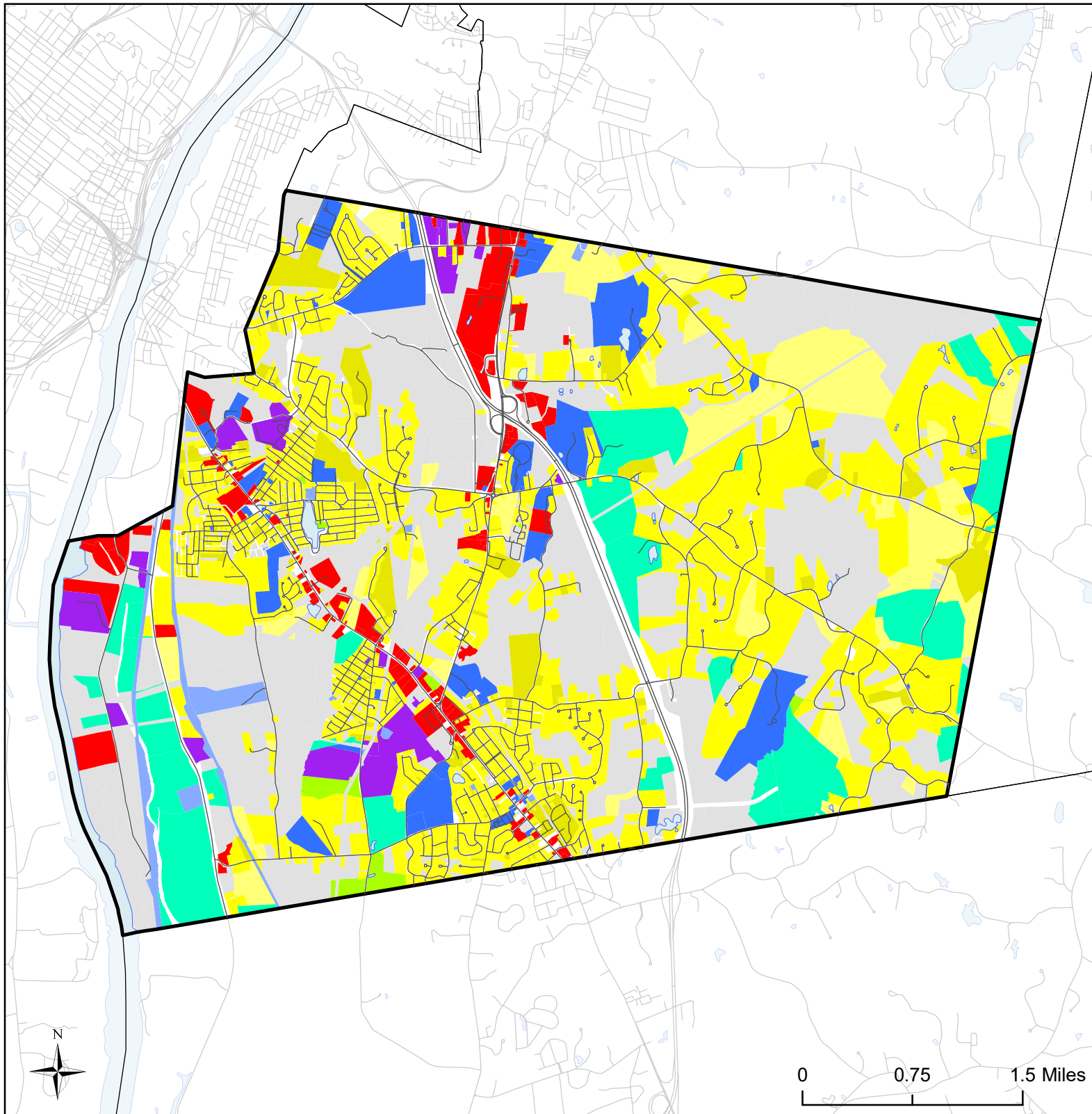
Greenhouse Gas Emissions by Sector



Per capita emissions (MTCO₂e*)

| | |
|------------------------|----|
| Town of East Greenbush | 12 |
| Rensselaer County | 11 |
| Capital District | 15 |

Source: Capital District 2010 Regional GHG Inventory
*Metric Tons Carbon Dioxide Equivalent



Town of East Greenbush, NY Land Use

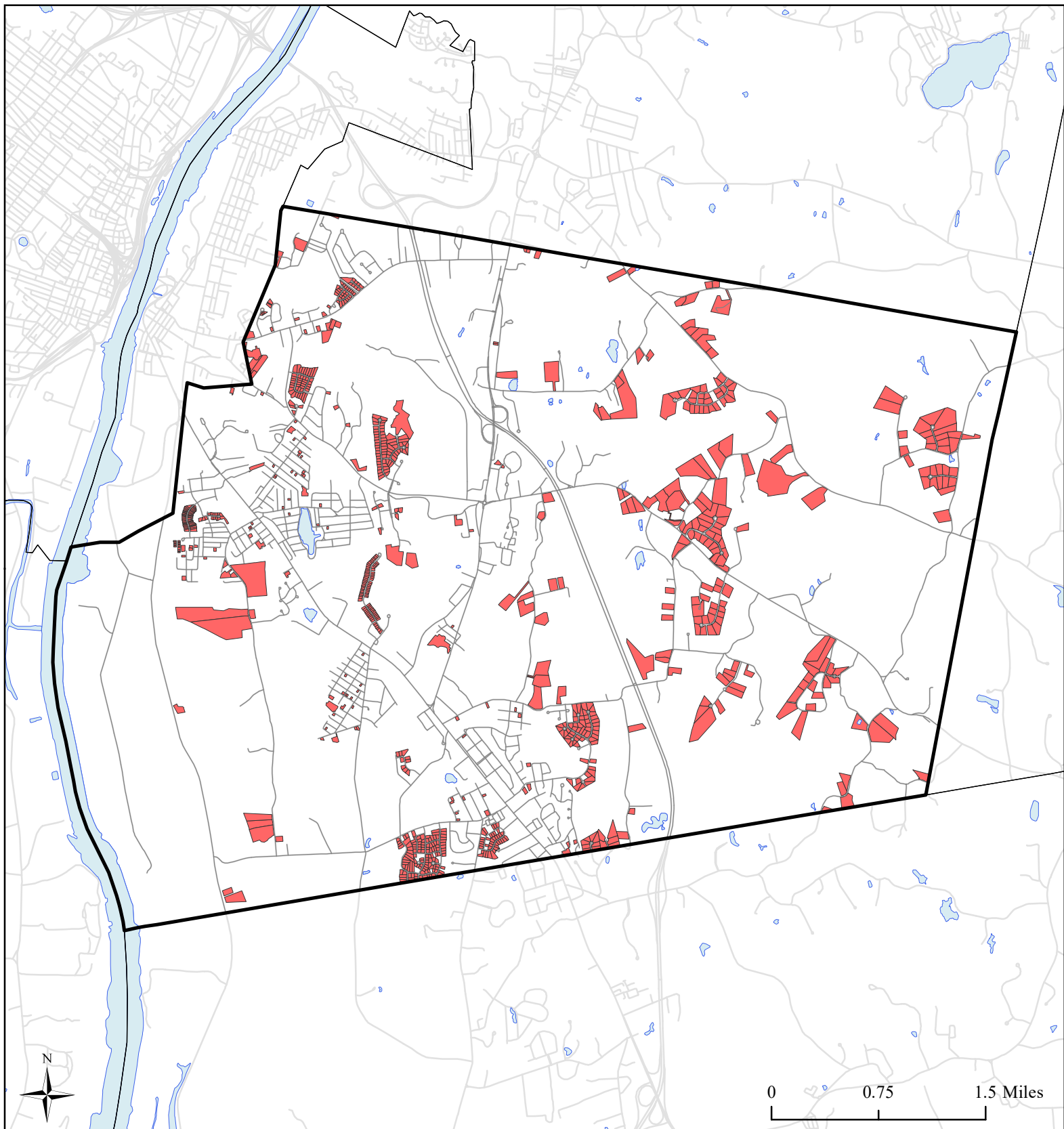


Land Use

- Agricultural
- Outdoor Recreation
- Wild, Forested and Conservation Lands
- Commercial
- Industrial



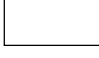
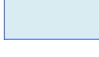

- Community Services
- Mixed-Use
- Single Family
- Multi-Family
- Large Lot Residential
- Public Services and Utilities

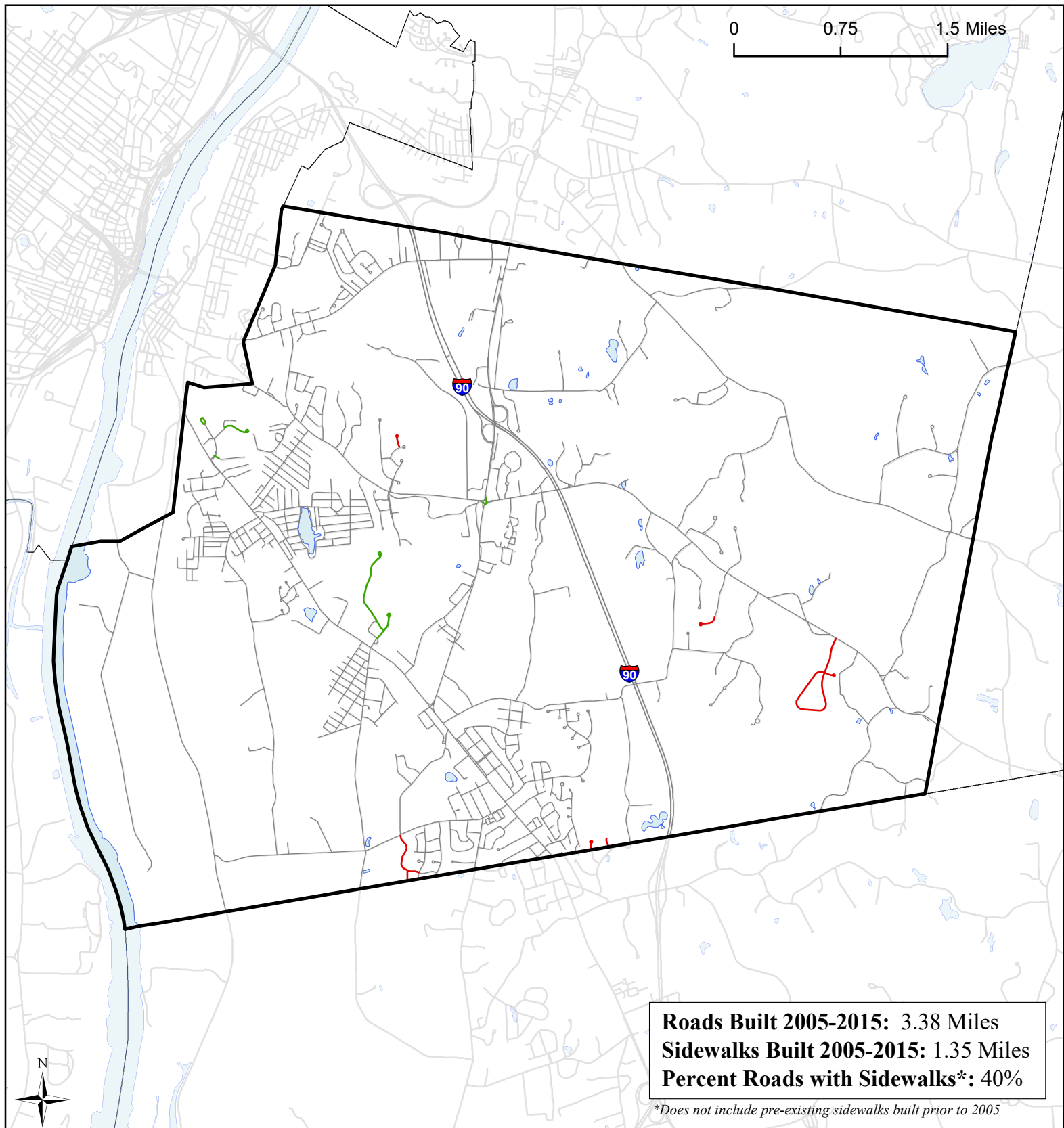
- Vacant Land
- Town of East Greenbush
- Municipal Boundaries
- Water Bodies
- Roads



Town of East Greenbush, NY Single Family Homes Built 1995-2015



-  Single Family Homes Built 1995-2015
-  East Greenbush Boundary
-  Municipal Boundaries
-  Water Bodies
-  Roads



Town of East Greenbush, NY **Roads Built 2005-2015**



**Roads Built
2005-2015**

— Sidewalk

— No Sidewalk

□ Town of East
Greenbush

□ Municipal
Boundaries

□ Water Bodies

— Roads Built Prior
to 2005

Source: NYS GIS Clearinghouse, GIS Program Office