



Community Growth Profile

Town of Day, NY



The following Community Growth Profile provides information regarding development patterns in the Town of Day, Saratoga County, NY. This report includes a current land use map, a map showing single family homes built in the last 20 years and new roads built over the last ten years. Also included are population and population projections, housing units, and greenhouse gas emissions data.

Population/Projections

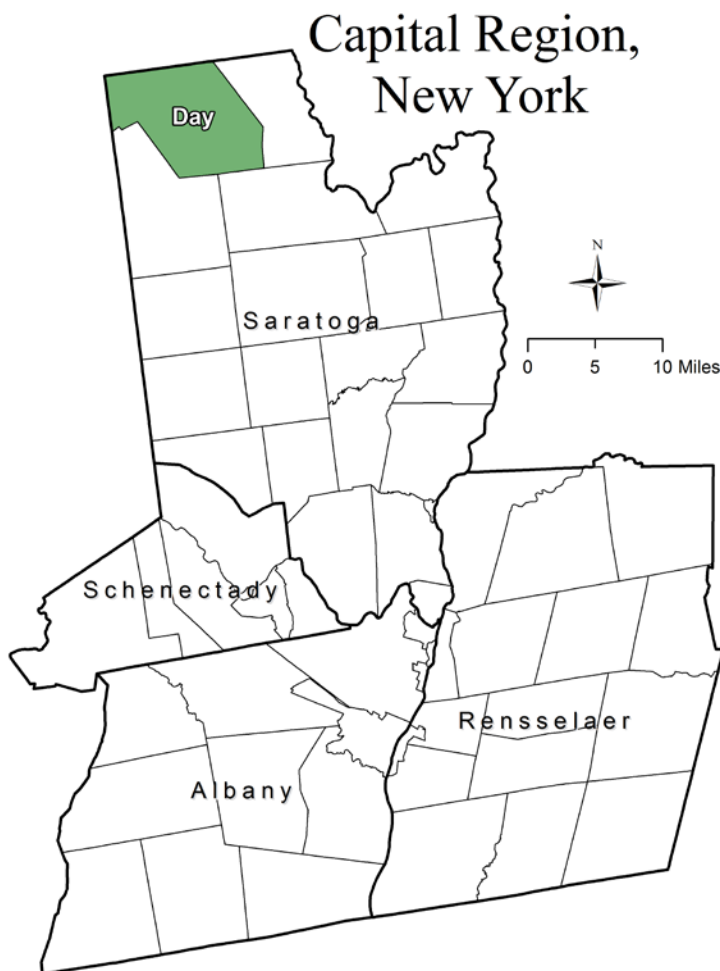
1980	1990	2000	2010	2020	2030	2040	2050
656	746	920	856	893	940	964	940

Source: U.S. Census 1980, 1990, 2000, 2010 ; CDRPC Projections

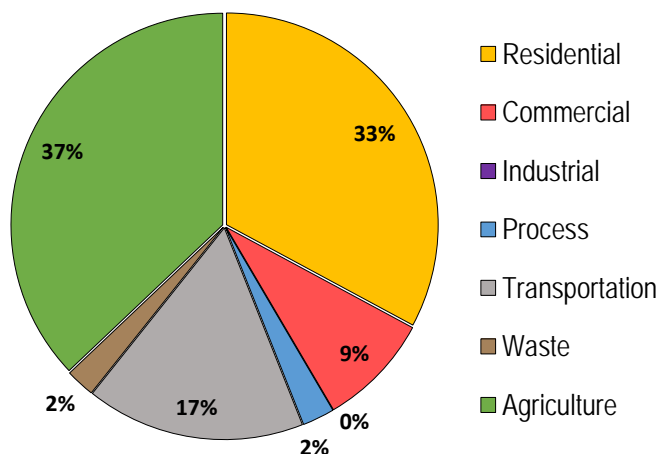
Housing Units 1980-2015

	1980	1990	2000	2010	2015
Total Housing Units	1,276	1,257	1,507	1,411	1,436

Source: U.S. Census 1980, 1990, 2000, 2010; U.S. Census Building Permit Survey 2011-15



Greenhouse Gas Emissions by Sector

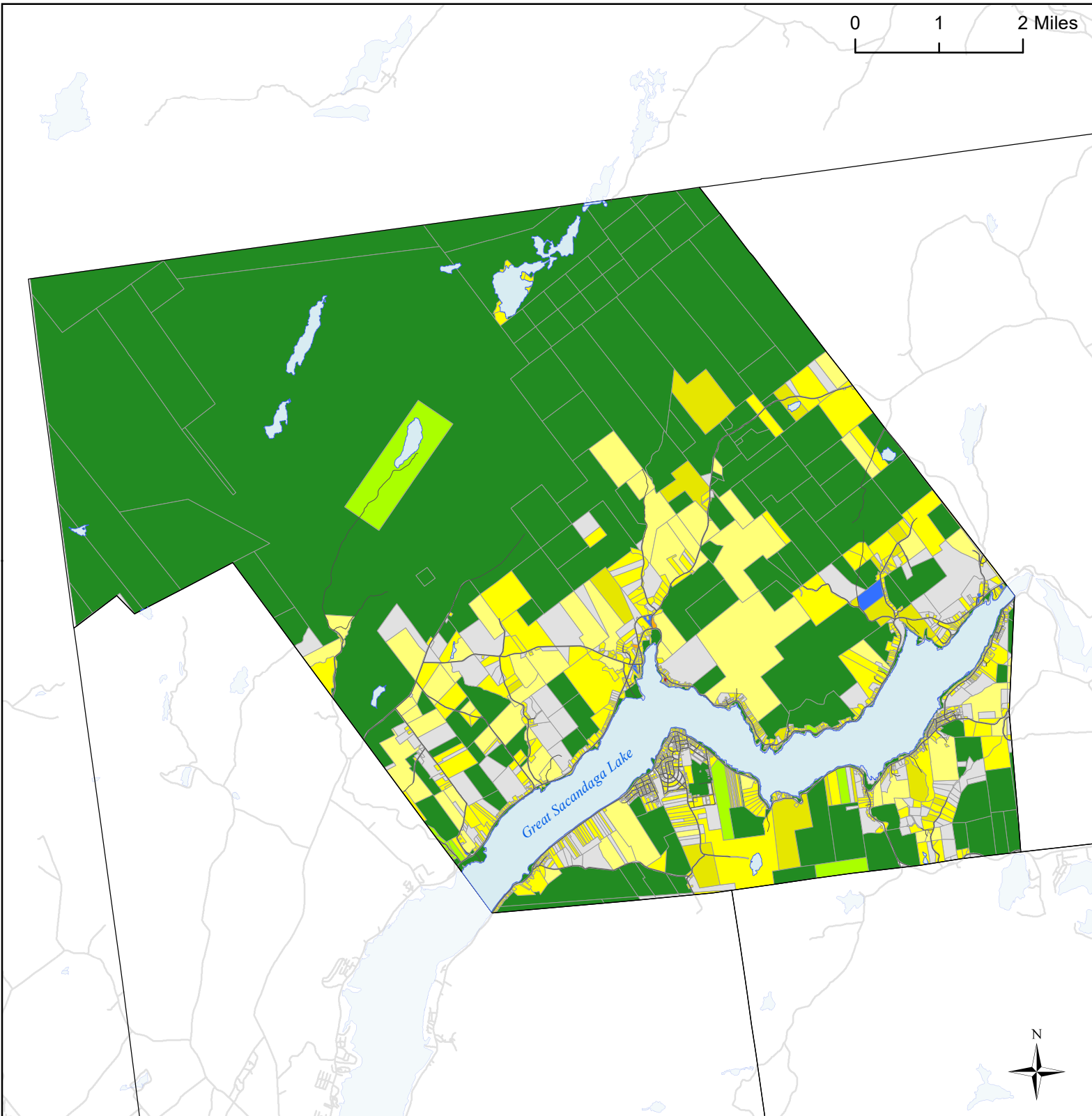


Per capita emissions (MTCO₂e*)

Town of Day	16
Saratoga County	14
Capital District	15

Source: Capital District 2010 Regional GHG Inventory

*Metric Tons Carbon Dioxide Equivalent



Town of Day, NY Land Use

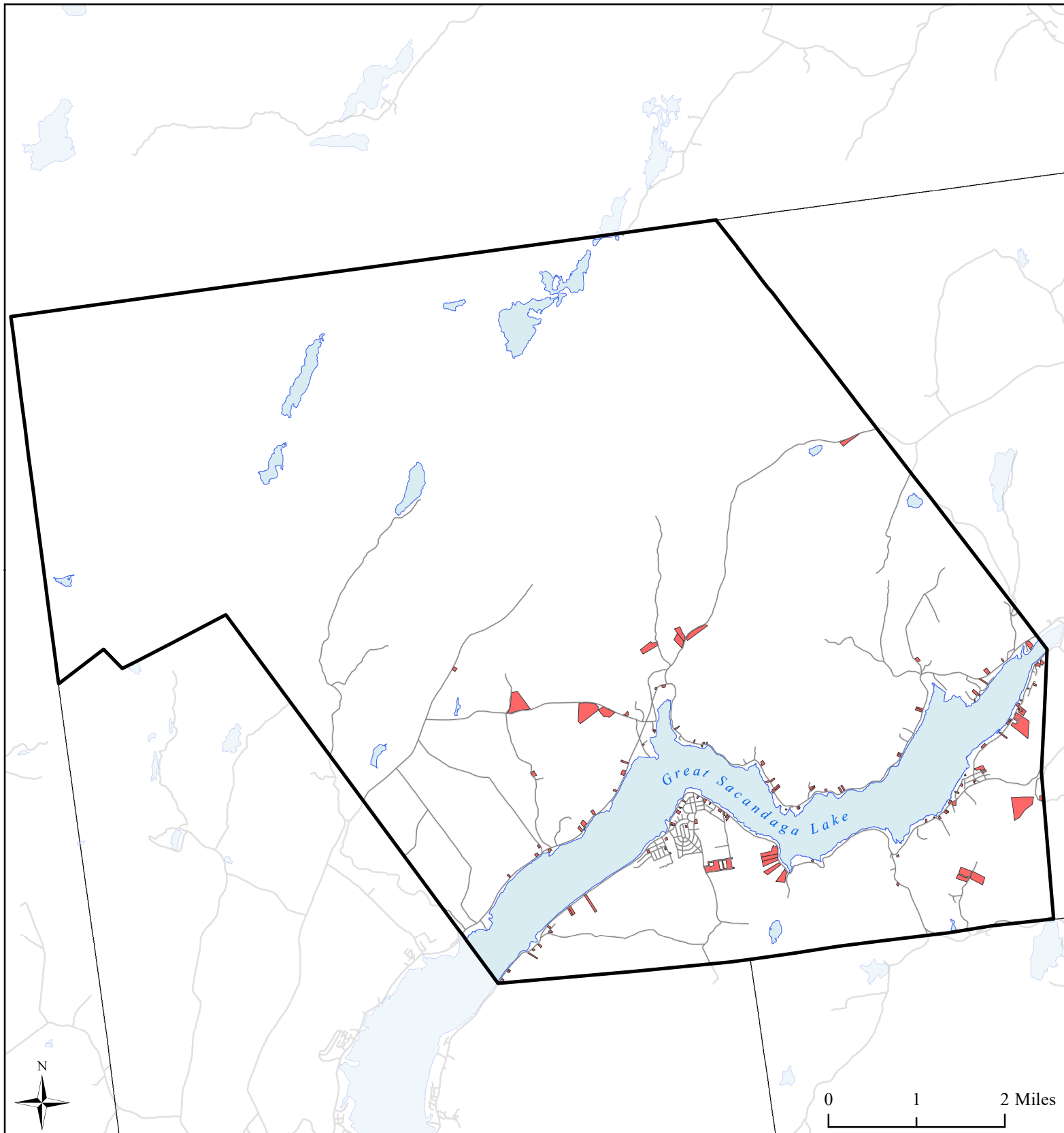


Land Use

- Agricultural
- Outdoor Recreation
- Wild, Forested and Conservation Lands
- Commercial
- Recreation and Entertainment


- Industrial
- Community Services
- Mixed-Use
- Single Family
- Multi-Family
- Large Lot Residential

- Public Services and Utilities
- Vacant Land
- Water Bodies
- Municipal Boundaries
- Roads



Town of Day, NY **Single Family Homes Built** **1995-2015**



 Single Family Homes
Built 1995-2015

 Day Boundary

 Municipal Boundaries

 Water Bodies

 Roads

Source: Saratoga County tax parcel data, 2016

0 1 2 Miles

Roads Built 2005-2015: .05 Miles
Sidewalks Built 2005-2015: 0 Miles
Percent Roads with Sidewalks*: 0%

**Does not include pre-existing sidewalks built prior to 2005*



Town of Day, NY

Roads Built 2005-2015



Roads Built 2005-2015

— Sidewalk

— No Sidewalk

 Town of Day

 Municipal
Boundaries

 Water Bodies

 Roads Built Prior to
2005

Source: NYS GIS Clearinghouse, GIS Program Office