



Community Growth Profile

Town of Clifton Park, NY



The following Community Growth Profile provides information regarding development patterns in the Town of Clifton Park, Saratoga County, NY. This report includes a current land use map, a map showing single family homes built in the last 20 years and new roads built over the last ten years. Also included are population and population projections, housing units, and green house gas emissions data.

Population/Projections

1980	1990	2000	2010	2020	2030	2040	2050
23,989	30,117	32,995	36,155	39,115	41,252	42,088	42,189

Source: U.S. Census 1980, 1990, 2000, 2010 ; CDRPC Projections

Housing Units 1980-2015

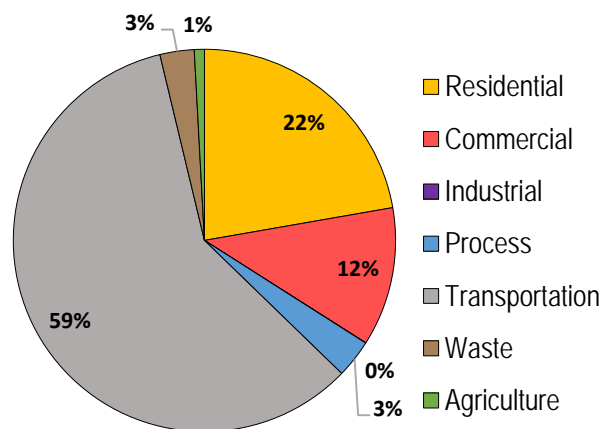
	1980	1990	2000	2010	2015
Total Housing Units	7,821	10,880	13,069	14,737	15,041

Source: U.S. Census 1980, 1990, 2000, 2010; U.S Census Building Permit Survey 2011-15

Capital Region, New York



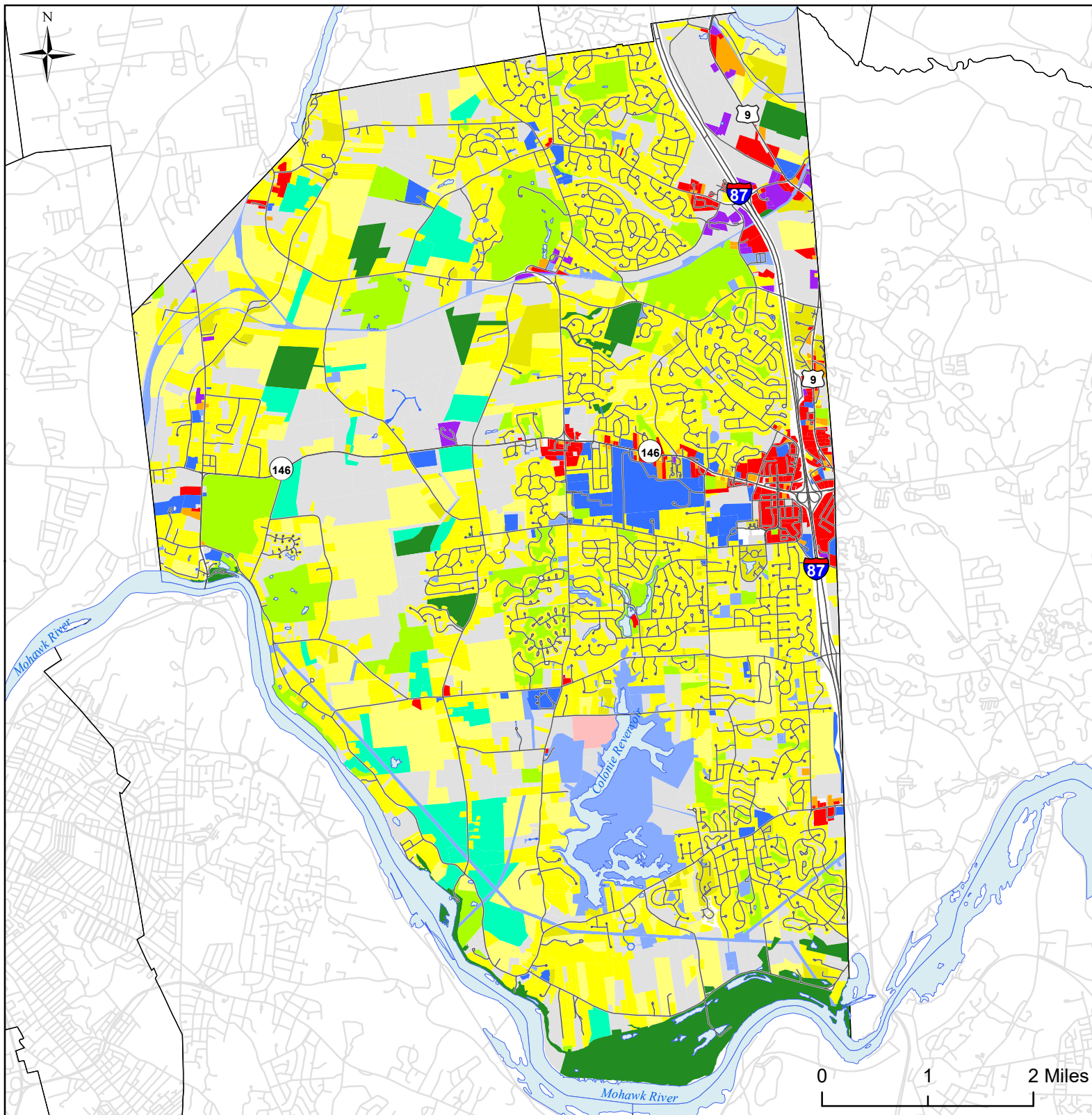
Greenhouse Gas Emissions by Sector



Per capita emissions (MTCO₂e*)

Town of Clifton Park	12
Saratoga County	14
Capital District	15

Source: Capital District 2010 Regional GHG Inventory
*Metric Tons Carbon Dioxide Equivalent



Town of Clifton Park, NY Land Use



Land Use

Agricultural

Outdoor Recreation

Wild, Forested and
Conservation Lands

Commercial

Recreation and
Entertainment

Industrial

Community
Services

Mixed-Use

Single Family

Multi-Family

Large Lot
Residential

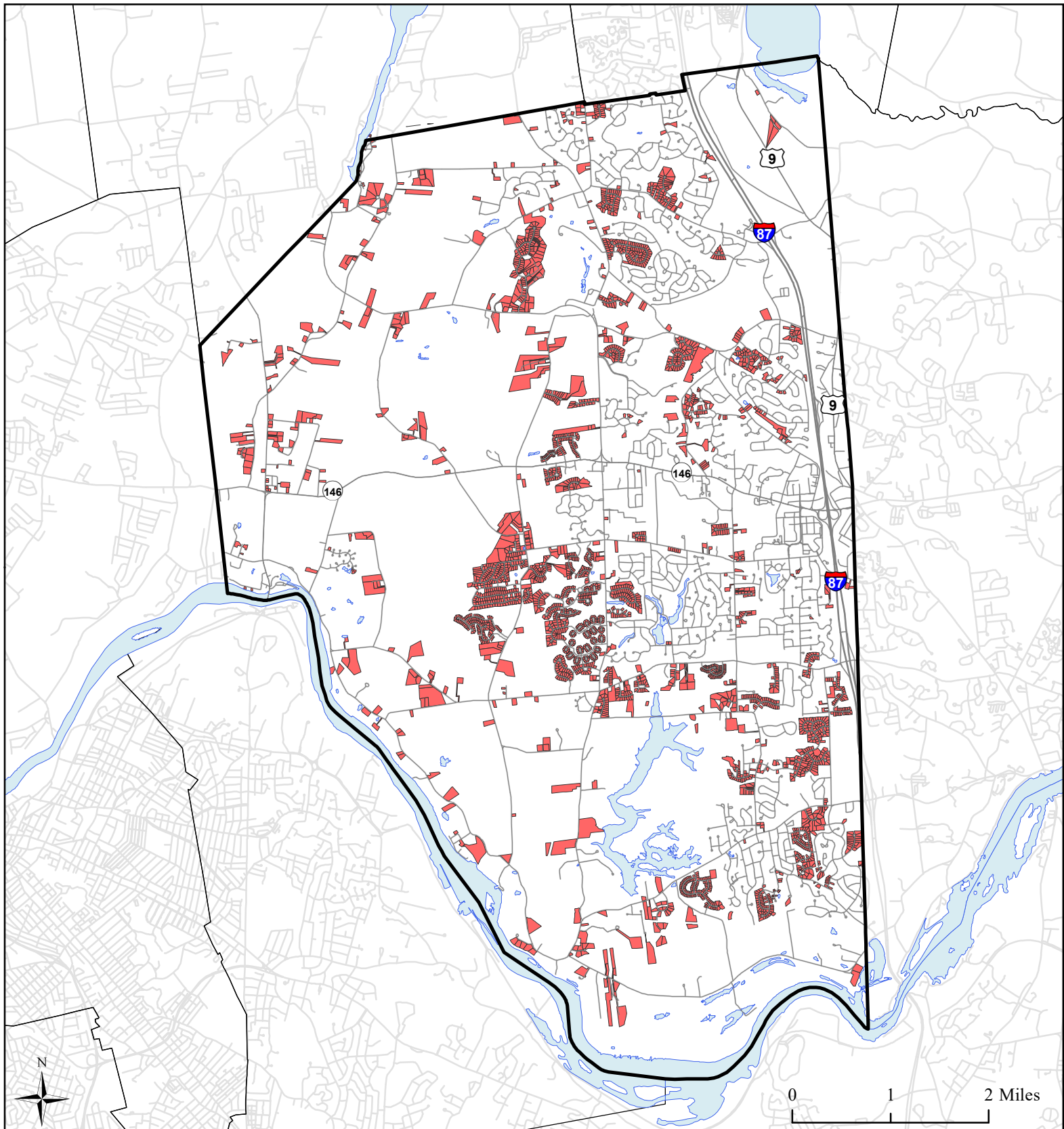
Public Services and
Utilities

Vacant Land

CliftonPark_Water...


Municipal
Boundaries

Roads



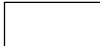
Town of Clifton Park, NY Single Family Homes Built 1995-2015



 Single Family Homes
Built 1995-2015

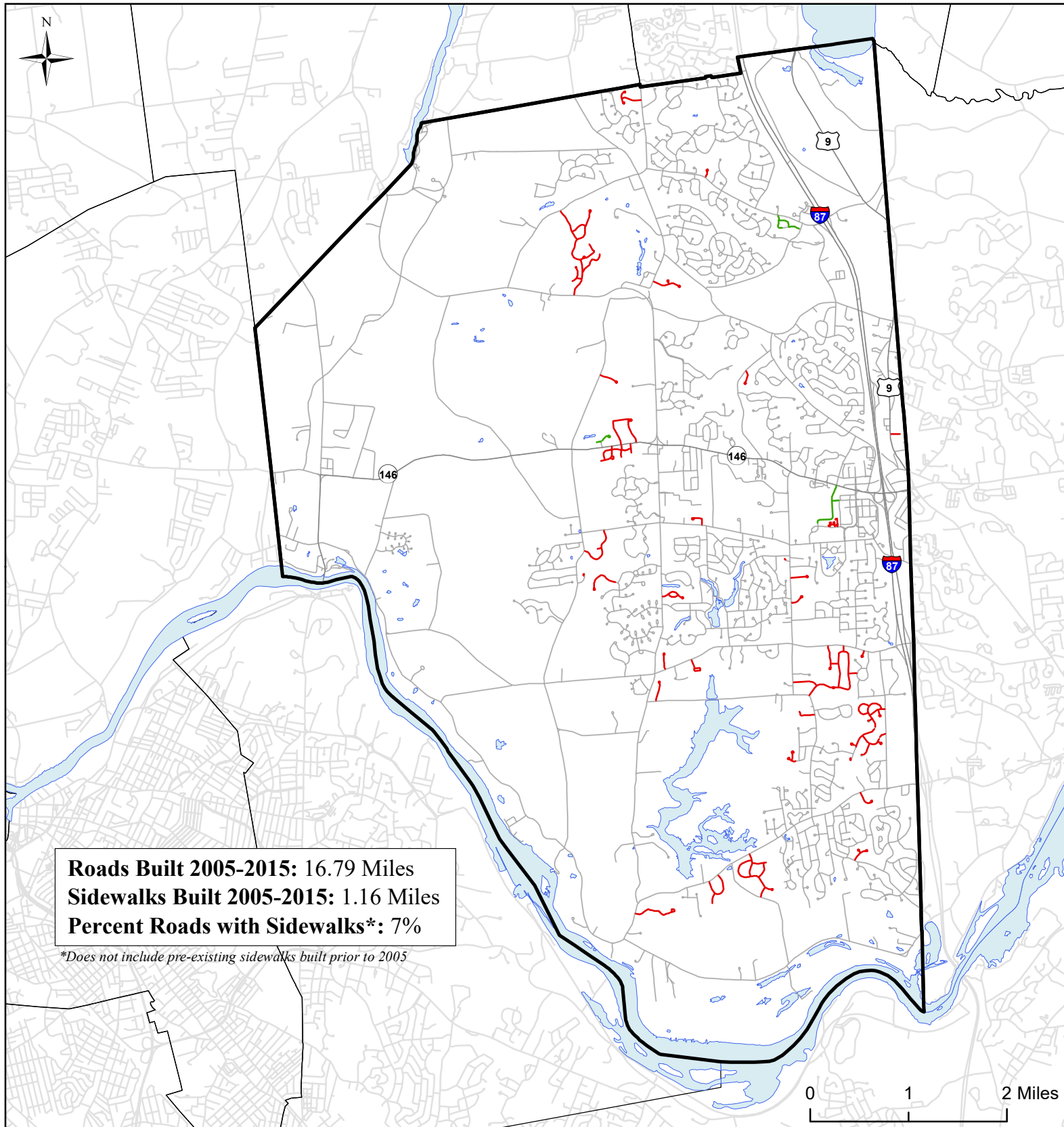
 Water Bodies

 Clifton Park Boundary

 Municipal Boundaries

 Roads

Source: Saratoga County tax parcel data, 2016



Town of Clifton Park, NY **Roads Built 2005-2015**



Roads Built 2005-2015

- Sidewalk
- No Sidewalk

Town of Clifton Park

Municipal Boundaries

Water Bodies

Roads Built Prior to 2005

Source: Saratoga County Real Property Services, 2016