



Community Growth Profile

Town of Charlton, NY



The following Community Growth Profile provides information regarding development patterns in the Town of Charlton, Saratoga County, NY. This report includes a current land use map, a map showing single family homes built in the last 20 years and new roads built over the last ten years. Also included are population and population projections, housing units, and greenhouse gas emissions data.

Population/Projections

| 1980 | 1990 | 2000 | 2010 | 2020 | 2030 | 2040 | 2050 |
|-------|-------|-------|-------|-------|-------|-------|-------|
| 4,019 | 3,984 | 3,954 | 4,133 | 4,291 | 4,376 | 4,395 | 4,357 |

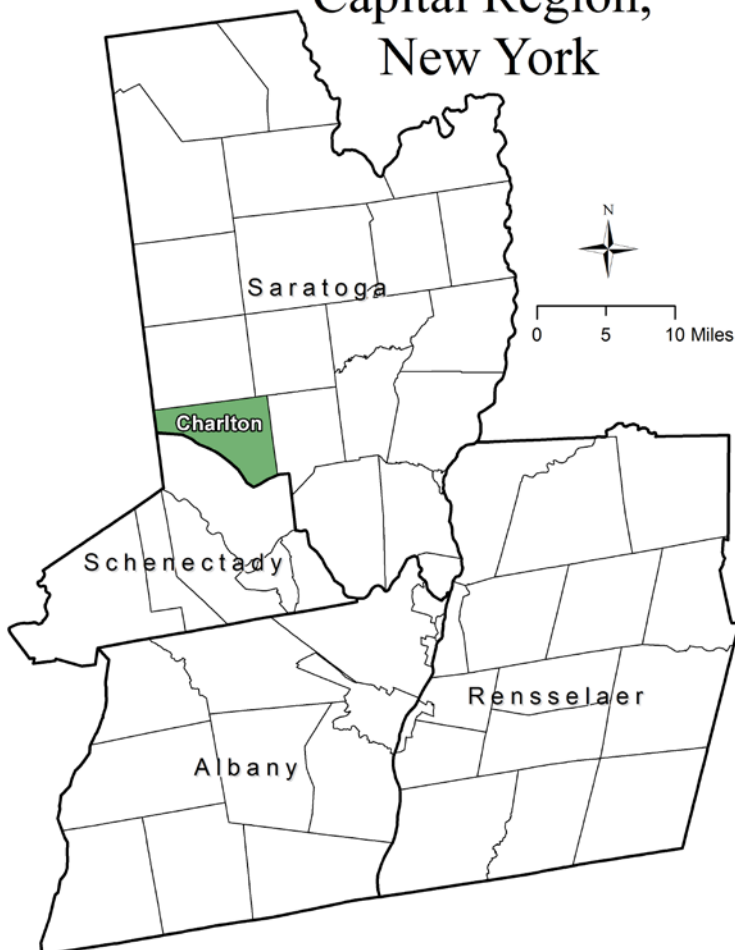
Source: U.S. Census 1980, 1990, 2000, 2010 ; CDRPC Projections

Housing Units 1980-2015

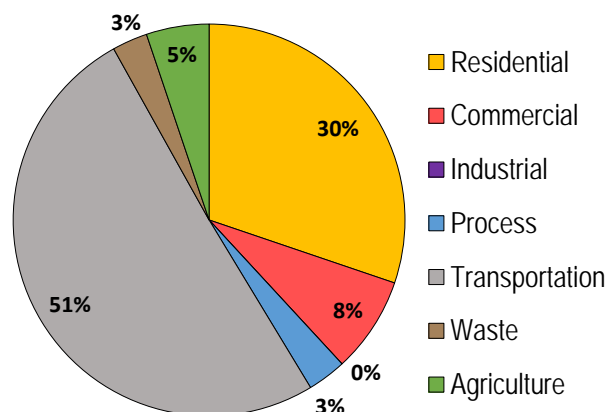
| | 1980 | 1990 | 2000 | 2010 | 2015 |
|---------------------|-------|-------|-------|-------|-------|
| Total Housing Units | 1,223 | 1,340 | 1,464 | 1,610 | 1,663 |

Source: U.S. Census 1980, 1990, 2000, 2010; U.S. Census Building Permit Survey 2011-15

Capital Region, New York



Greenhouse Gas Emissions by Sector



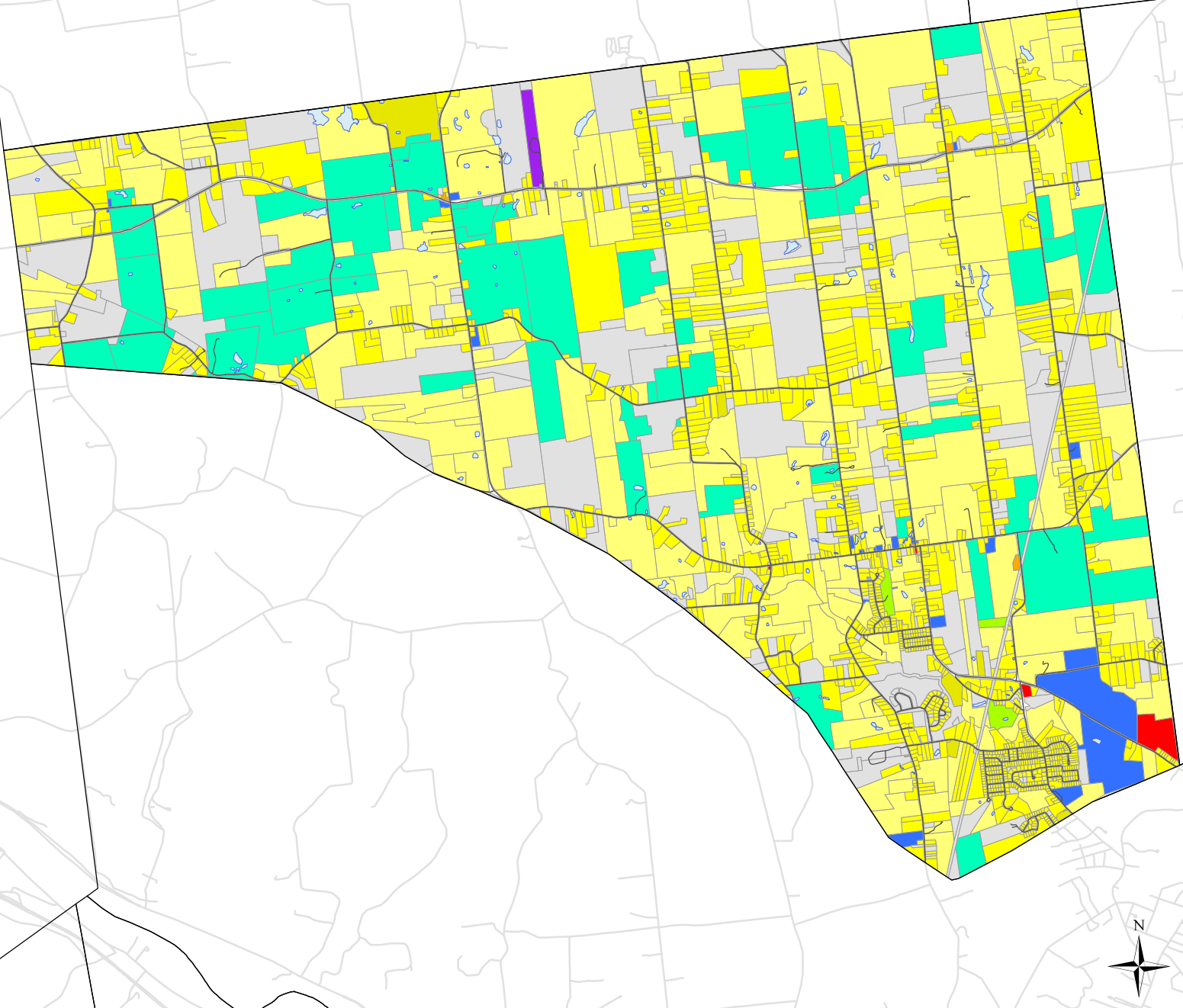
Per capita emissions (MTCO₂e*)

| | |
|------------------|----|
| Town of Charlton | 12 |
| Saratoga County | 14 |
| Capital District | 15 |

Source: Capital District 2010 Regional GHG Inventory

*Metric Tons Carbon Dioxide Equivalent

0 1 2 Miles

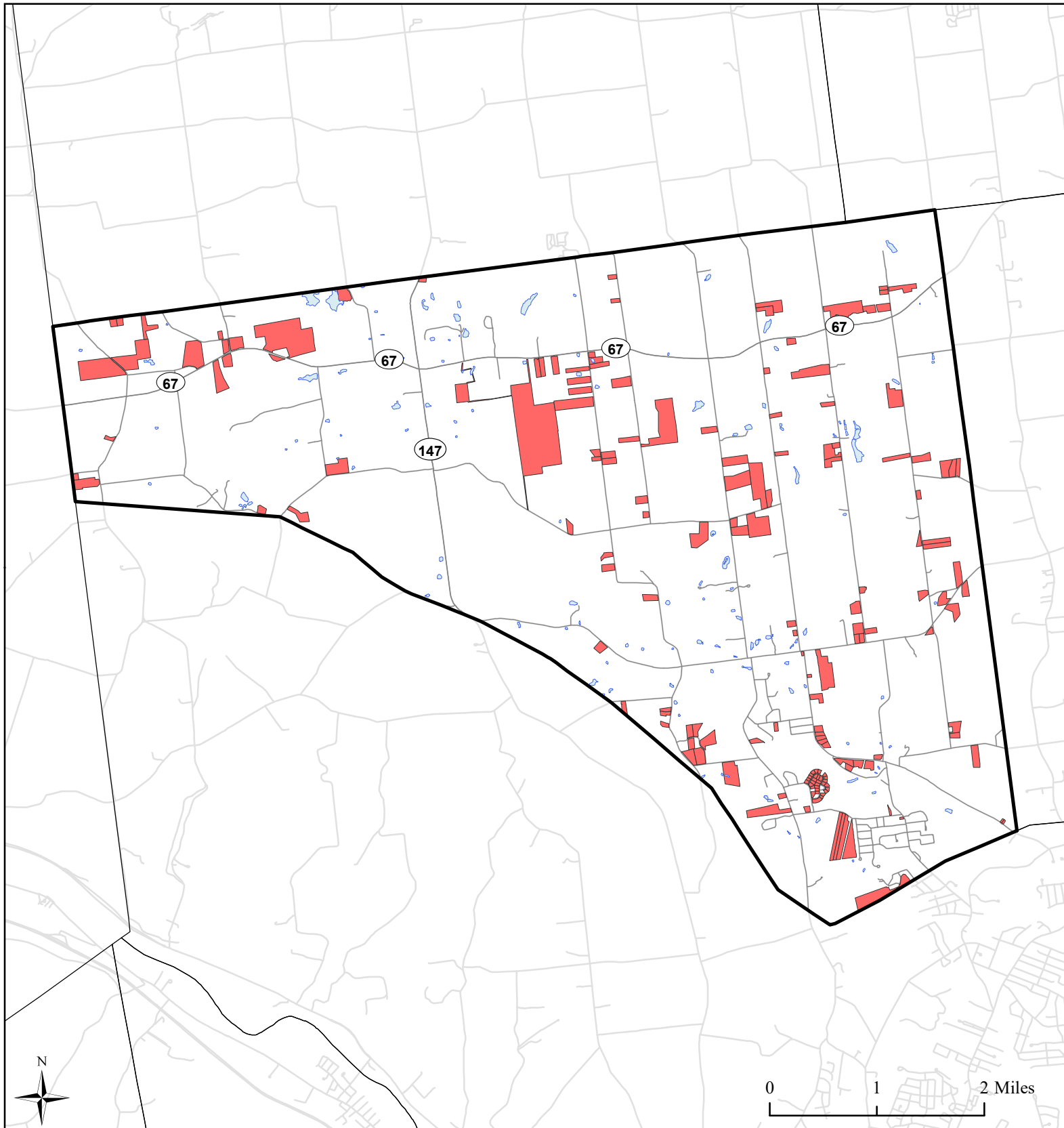


Town of Charlton, NY **Land Use**



Land Use


- | | | |
|---------------------------------------|-----------------------|-------------------------------|
| Agricultural | Community Services | Public Services and Utilities |
| Outdoor Recreation | Mixed-Use | Vacant Land |
| Wild, Forested and Conservation Lands | Single Family | Municipal Boundaries |
| Commercial | Multi-Family | Water Bodies |
| Industrial | Large Lot Residential | Roads |



Town of Charlton, NY

Single Family Homes Built 1995-2015



 Single Family Homes Built 1995-2015

 Water Bodies

 Charlton Boundary

 Municipal Boundaries

 Roads

Source: Saratoga County tax parcel data, 2016

0 1.25 2.5 Miles



Roads Built 2005-2015: 1.78 Miles
Sidewalks Built 2005-2015: 0 Miles
Percent Roads with Sidewalks: 0%

**Does not include pre-existing sidewalks built prior to 2005*

Town of Charlton, NY Roads Built 2005-2015 with Walk Scores



Roads Built 2005-2015

— Sidewalk

— No
Sidewalk

Charlton Boundary

Municipal
Boundaries

Water Bodies

Roads Built Prior to
2005

Source: NYS GIS Clearinghouse, GIS Program Office