



Community Growth Profile

Town of Berlin, NY



The following Community Growth Profile provides information regarding development patterns in the Town of Berlin, Rensselaer County, NY. This report includes a current land use map, a map showing single family homes built in the last 20 years and new roads built over the last ten years. Also included are population and population projections, housing units, and greenhouse gas emissions data.

Population/Projections

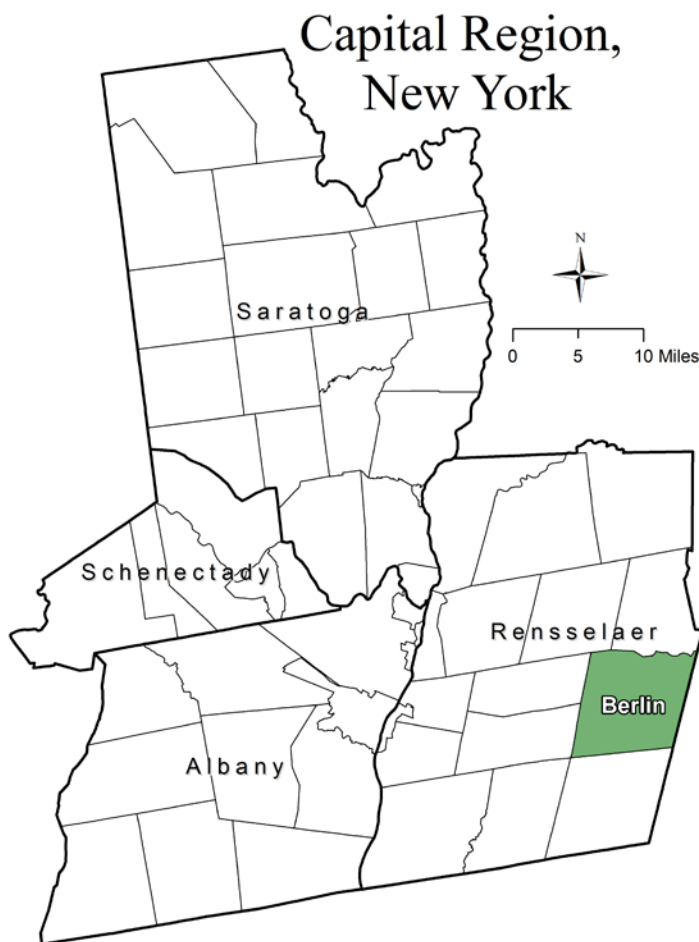
1980	1990	2000	2010	2020	2030	2040	2050
1,696	1,929	1,901	1,880	1,893	1,904	1,883	1,826

Source: U.S. Census 1980, 1990, 2000, 2010 ; CDRPC Projections

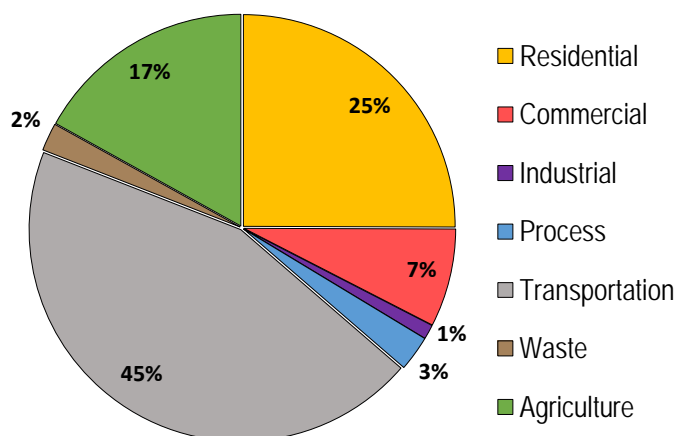
Housing Units 1980-2015

	1980	1990	2000	2010	2015
Total Housing Units	696	910	1,034	1,100	1,111

Source: U.S. Census 1980, 1990, 2000, 2010; U.S. Census Building Permit Survey 2011-15



Greenhouse Gas Emissions by Sector

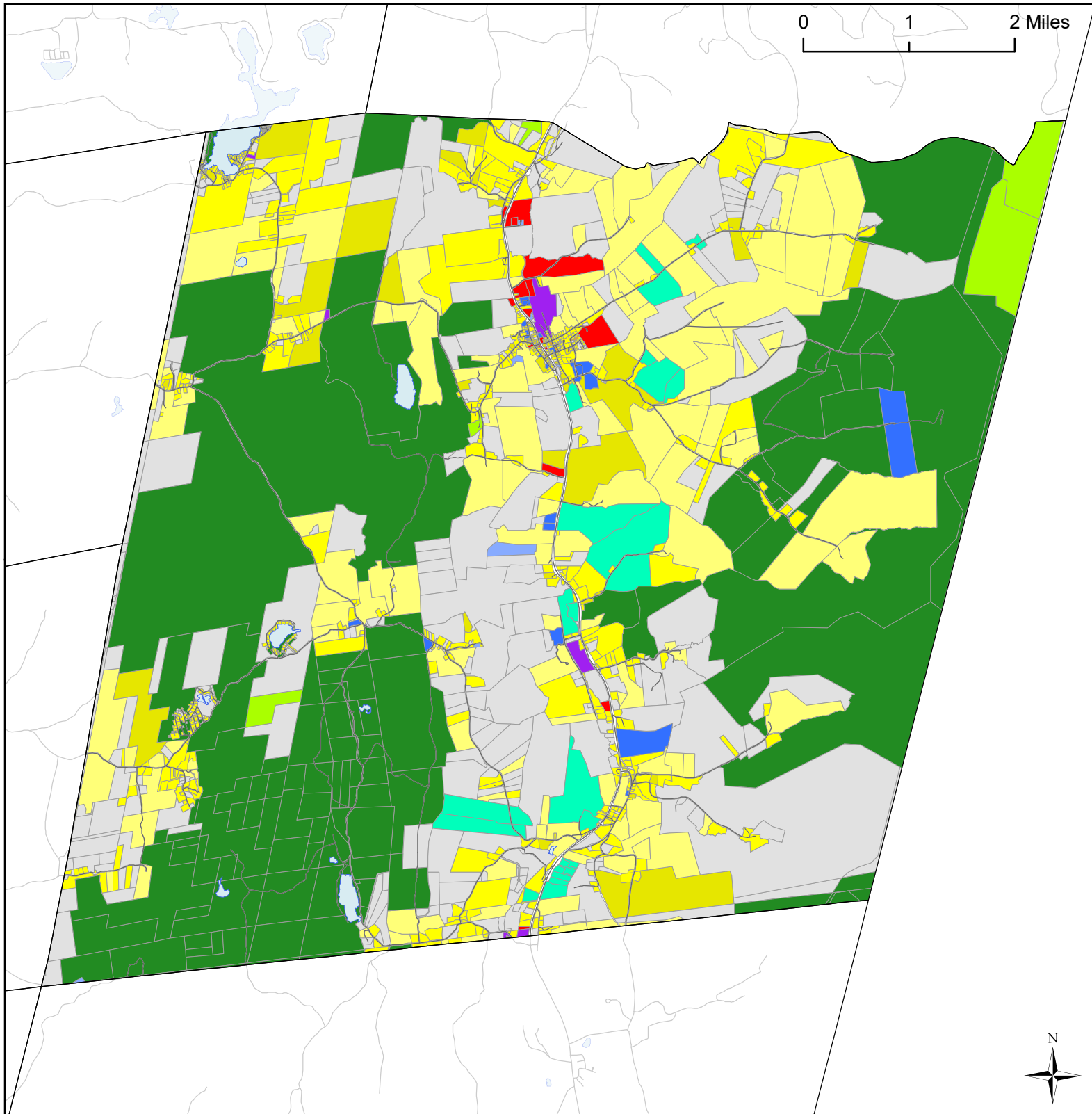


Per capita emissions (MTCO₂e*)

Town of Berlin	14
Rensselaer County	11
Capital District	15

Source: Capital District 2010 Regional GHG Inventory

*Metric Tons Carbon Dioxide Equivalent





Town of Berlin, NY Land Use



Land Use


 Agricultural

 Outdoor Recreation

 Wild, Forested and
Conservation Lands

 Commercial

 Industrial

 Community Services

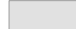
 Mixed-Use

 Single Family

 Multi-Family

 Large Lot Residential

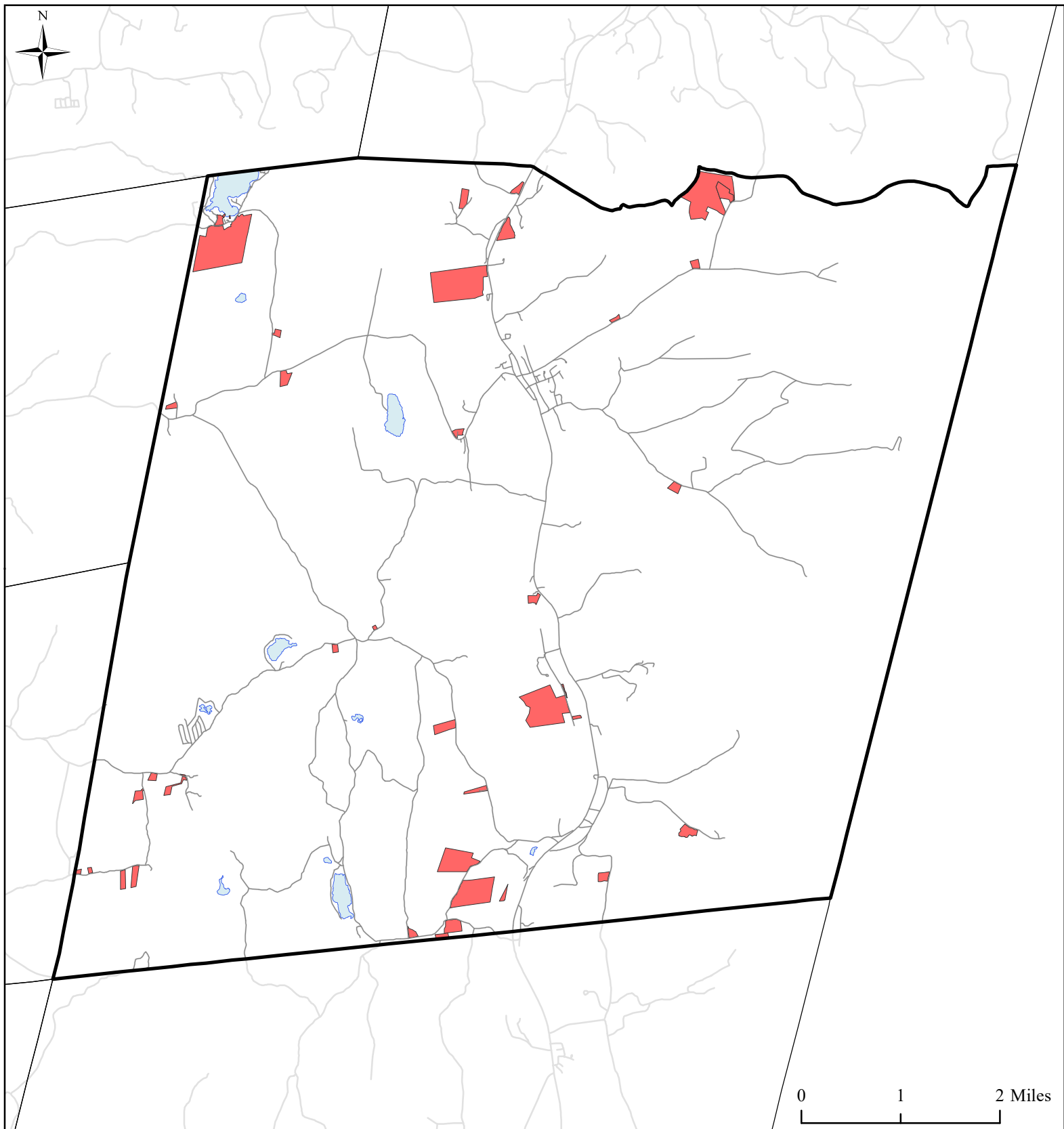
 Public Services and
Utilities

 Vacant Land

 Water Bodies

 Municipal Boundaries

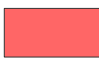


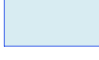

 Roads



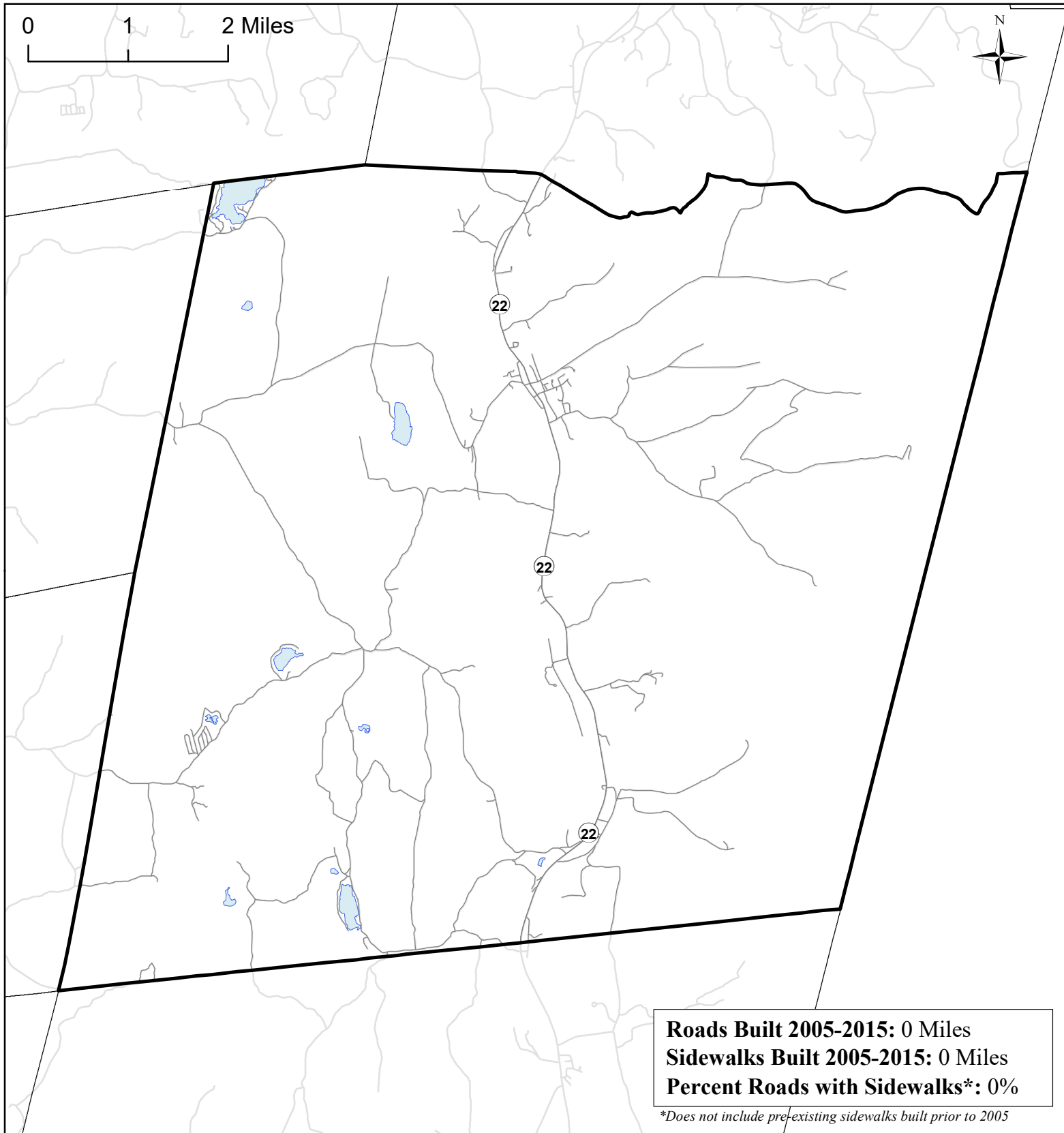
Town of Berlin, NY

Single Family Homes Built 1995-2015



-  Single Family Homes Built 1995-2015
-  Berlin Boundary
-  Municipal Boundaries
-  Water Bodies
-  Roads

0 1 2 Miles



Roads Built 2005-2015: 0 Miles
Sidewalks Built 2005-2015: 0 Miles
Percent Roads with Sidewalks*: 0%

**Does not include pre-existing sidewalks built prior to 2005*

Town of Berlin, NY

Roads Built 2005-2015

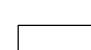


Roads Built 2005-2015


— Sidewalk

— No Sidewalk

 Town of Berlin

 Municipal
Boundaries

 Water Bodies

 Roads Built Prior
to 2005

Source: NYS GIS Clearinghouse, GIS Program Office