



Community Growth Profile

City of Schenectady, NY



The following Community Growth Profile provides information regarding development patterns in the City of Schenectady, Schenectady County, NY. This report includes a current land use map, a map showing single family homes built in the last 20 years and new roads built over the last ten years. Also included are population and population projections, housing units, and greenhouse gas emissions data.

Population/Projections

1980	1990	2000	2010	2020	2030	2040	2050
67,972	65,566	61,821	66,135	67,113	68,223	68,211	66,852

Source: U.S. Census 1980, 1990, 2000, 2010 ; CDRPC Projections

Housing Units 1980-2015

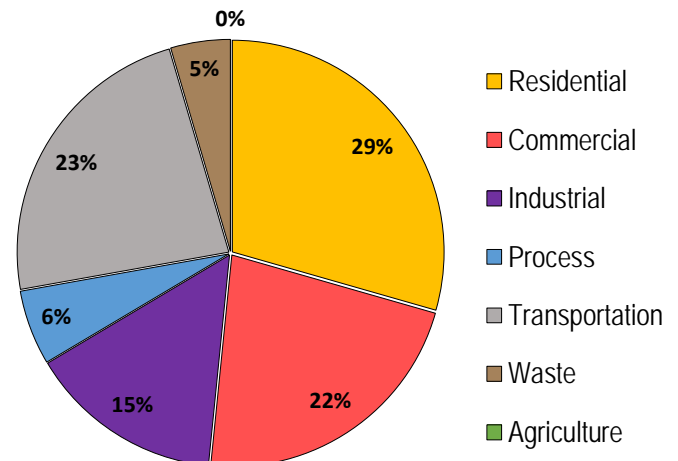
	1980	1990	2000	2010	2015
Total Housing Units	30,249	30,232	30,272	30,095	30,149

Source: U.S. Census 1980, 1990, 2000, 2010; U.S. Census Building Permit Survey 2011-15

Capital Region, New York



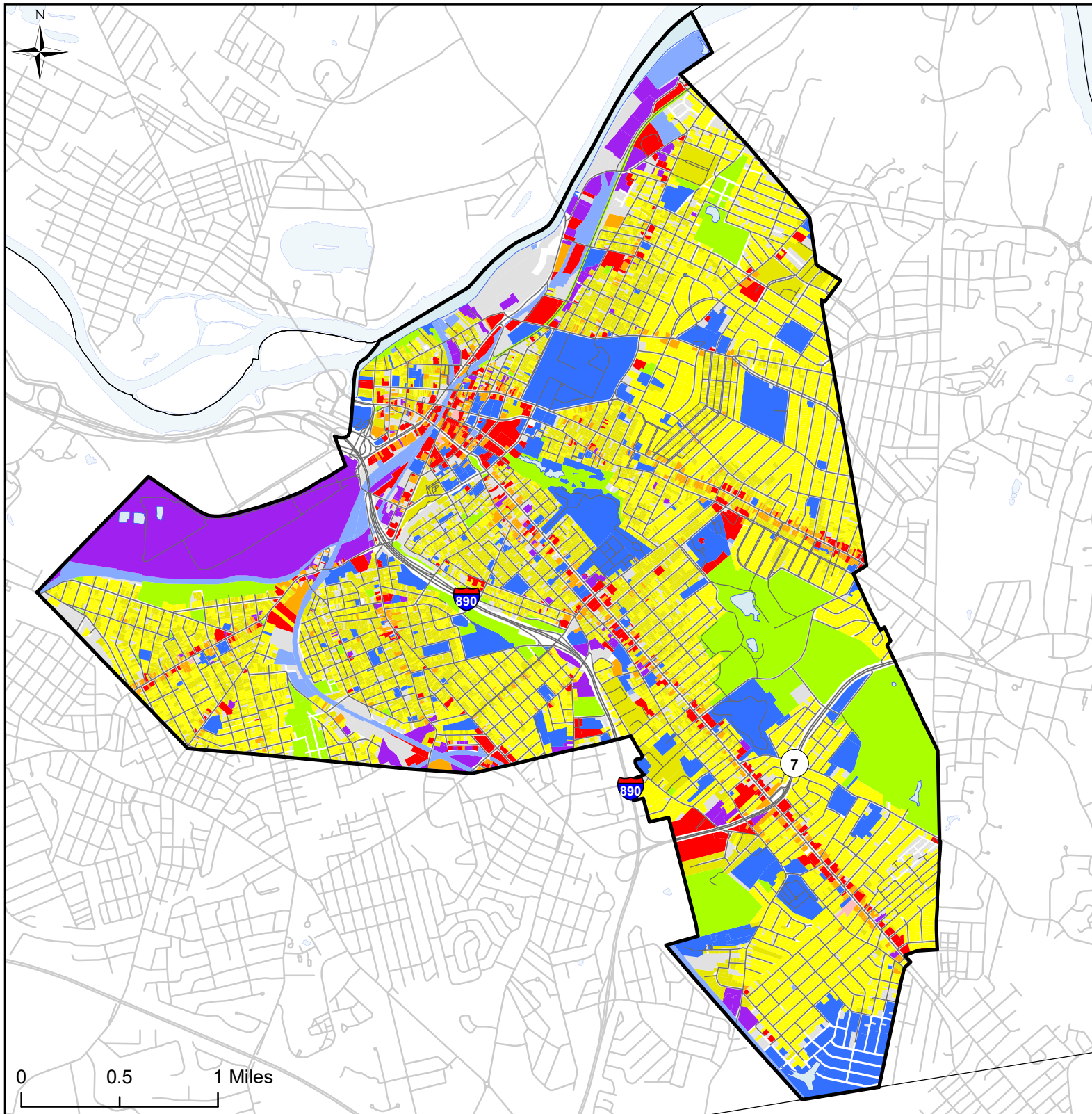
Greenhouse Gas Emissions by Sector



Per capita emissions (MTCO₂e*)

City of Schenectady	7
Schenectady County	10
Capital District	15

Source: Capital District 2010 Regional GHG Inventory
*Metric Tons Carbon Dioxide Equivalent



City of Schenectady, NY Land Use



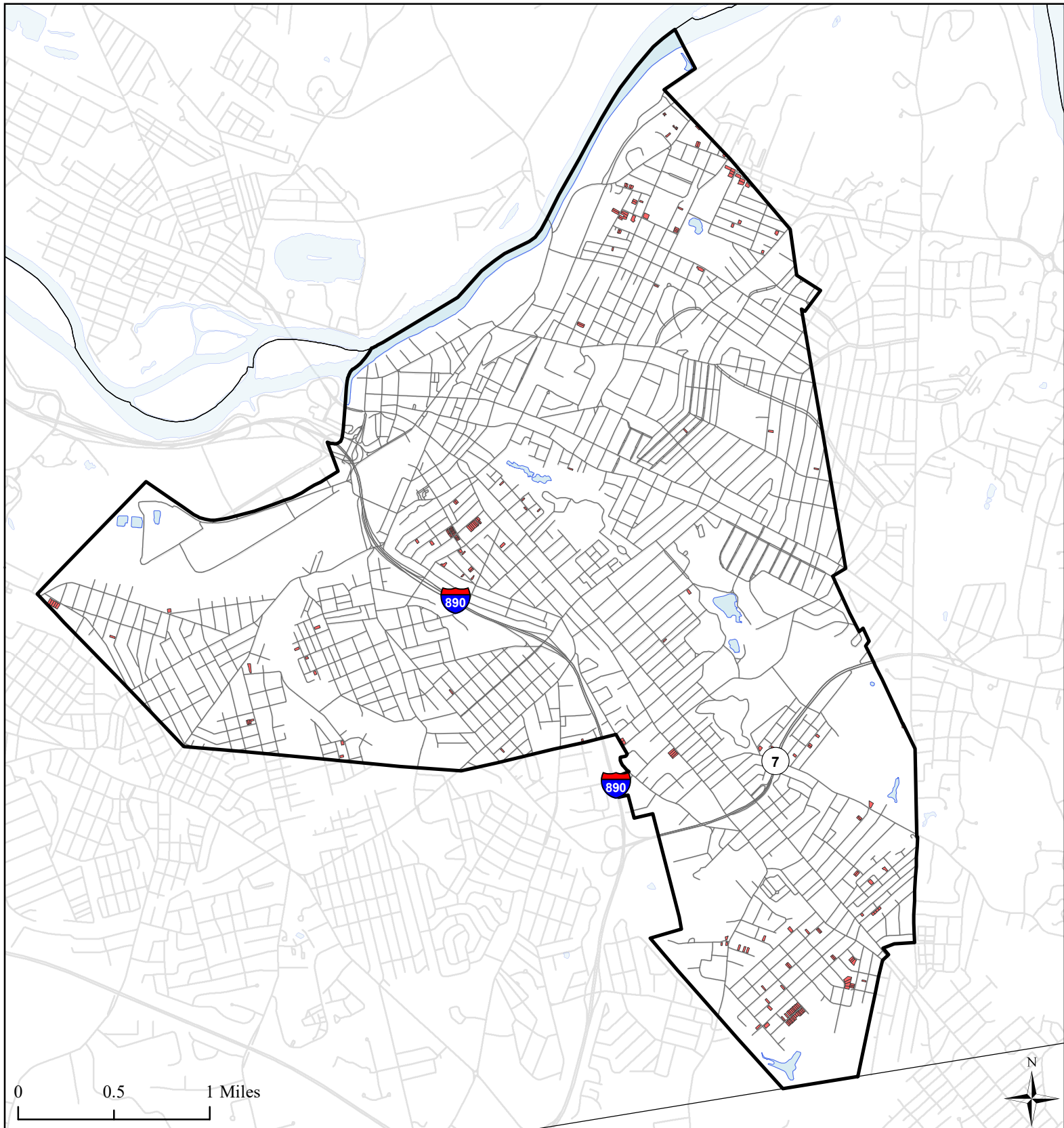
Source: Schenectady Department of Economic
Development and Planning;
NYS GIS Program Office, 2016

Land Use

- Agricultural
- Outdoor Recreation
- Wild, Forested and
Conservation Lands
- Commercial
- Recreation and
Entertainment

- Industrial
- Community Services
- Mixed-Use
- Single Family
- Multi-Family
- Large Lot Residential


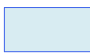



- Public Services and
Utilities
- Vacant Land
- City of Schenectady
- Municipal Boundaries
- Water Bodies
- Roads



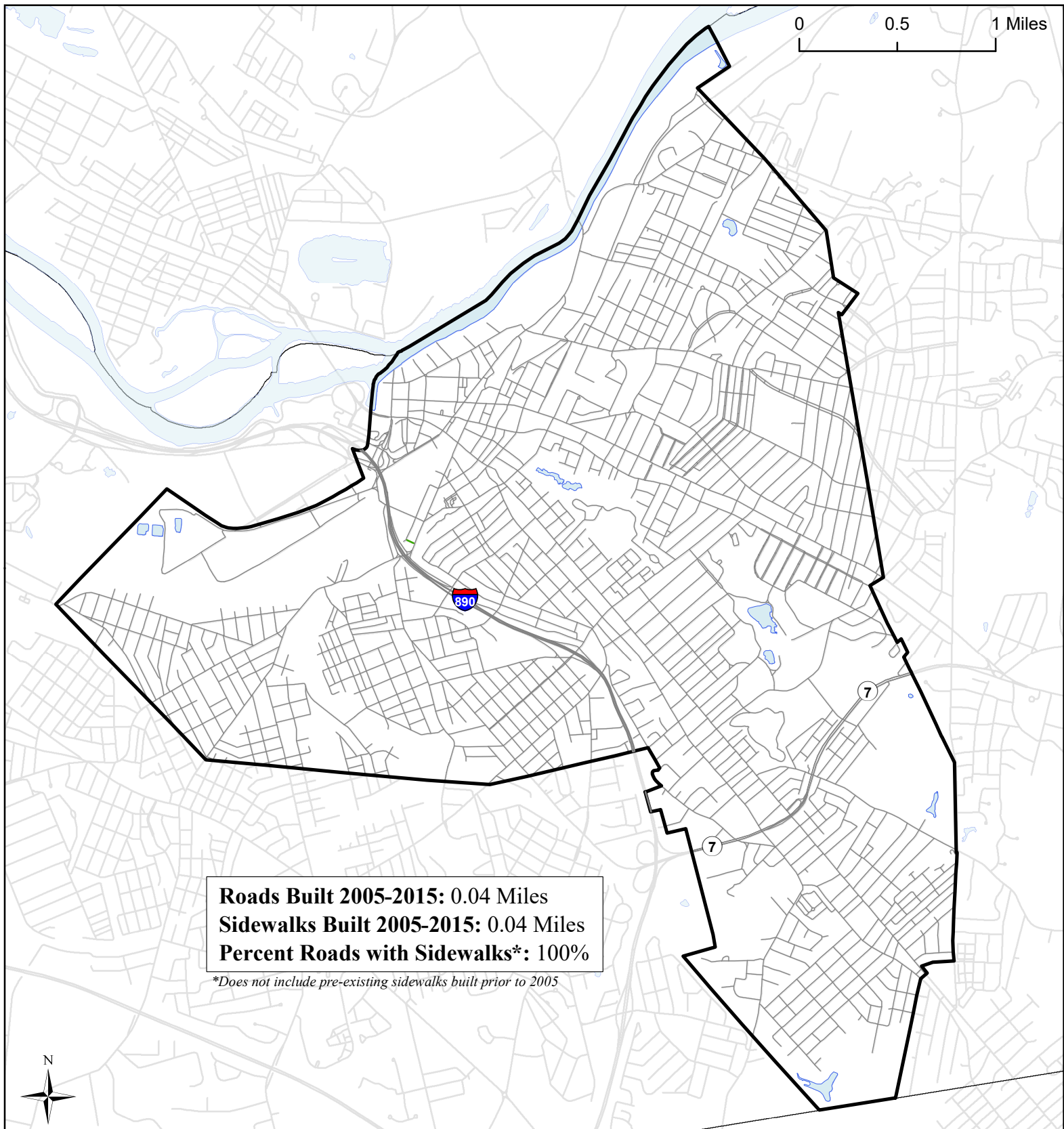
City of Schenectady, NY

Single Family Homes Built 1995-2015



-  Single Family Homes Built 1995-2015
-  Water Bodies
-  City of Schenectady
-  Municipal Boundaries
-  Roads

Source: Schenectady Department of Economic Development and Planning;
NYS GIS Program Office, 2016



City of Schenectady, NY

Roads Built 2005-2015



Roads Built 2005-2015

- Sidewalk
- No Sidewalk

- Roads Built Prior to 2005
- City of Schenectady
- Municipal Boundaries
- Water Bodies

Source: NYS GIS Clearinghouse, GIS Program Office