



# Community Growth Profile

## Town of Rotterdam, NY



The following Community Growth Profile provides information regarding development patterns in the Town of Rotterdam, Schenectady County, NY. This report includes a current land use map, a map showing single family homes built in the last 20 years and new roads built over the last ten years. Also included are population and population projections, housing units, and greenhouse gas emissions data.

### Population/Projections

1980	1990	2000	2010	2020	2030	2040	2050
29,451	28,395	28,316	29,094	29,858	30,520	30,703	30,299

Source: U.S. Census 1980, 1990, 2000, 2010 ; CDRPC Projections

### Housing Units 1980-2015

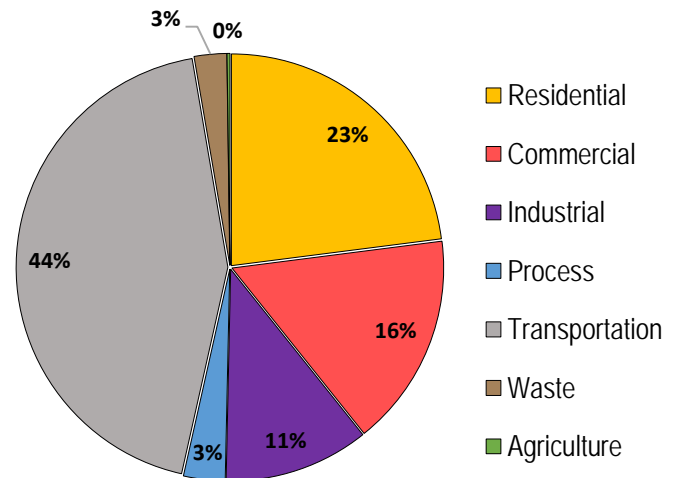
	1980	1990	2000	2010	2015
Total Housing Units	10,429	11,361	11,990	13,003	13,465

Source: U.S. Census 1980, 1990, 2000, 2010; U.S. Census Building Permit Survey 2011-15

### Capital Region, New York



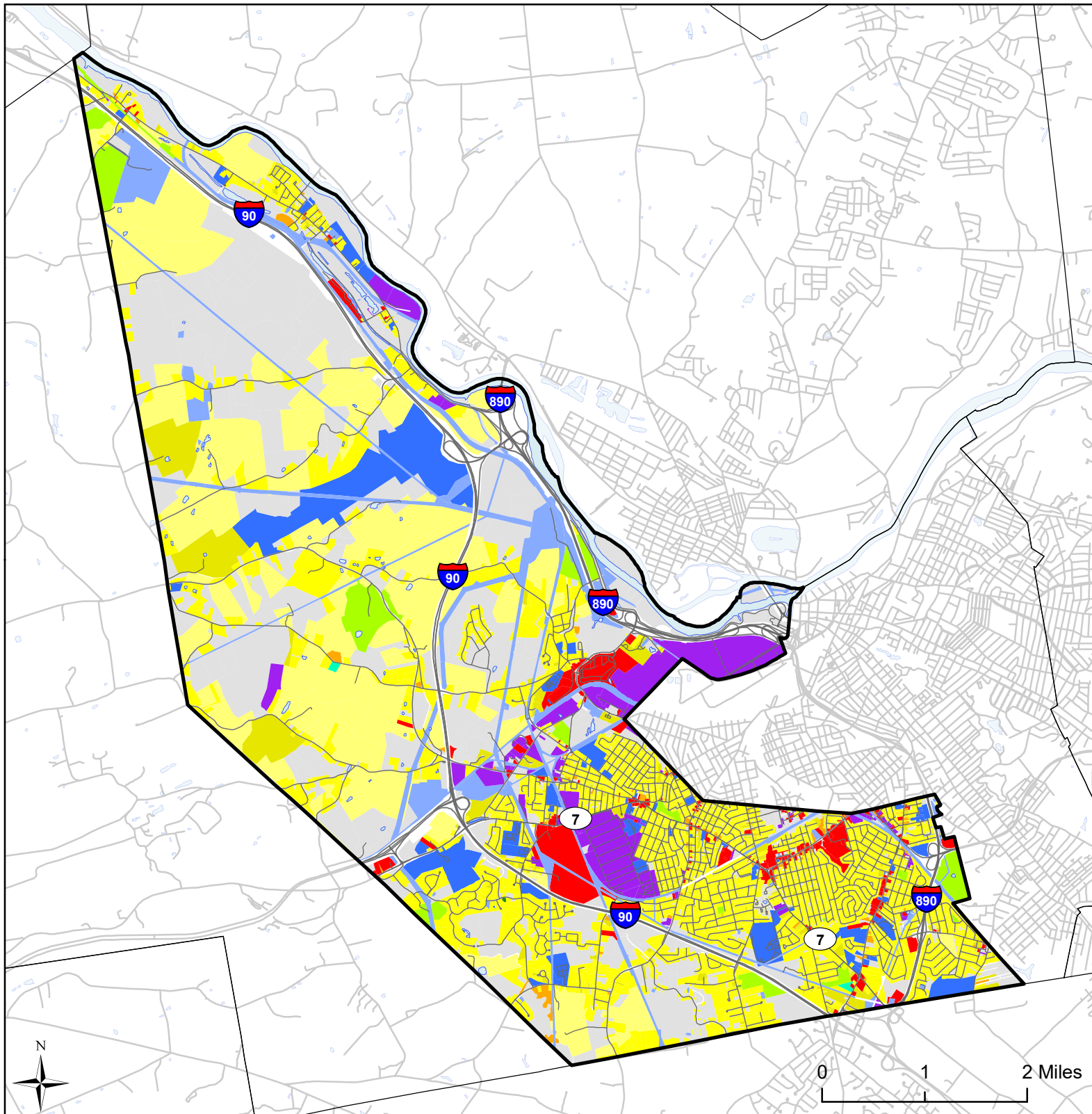
### Greenhouse Gas Emissions by Sector



### Per capita emissions (MTCO<sub>2</sub>e\*)

Town of Rotterdam	12
Schenectady County	10
Capital District	15

Source: Capital District 2010 Regional GHG Inventory  
\*Metric Tons Carbon Dioxide Equivalent



## Town of Rotterdam, NY Land Use



Source: Schenectady Department of Economic  
Development and Planning;  
NYS GIS Program Office, 2016

### Land Use

■ Agricultural

■ Outdoor Recreation

■ Wild, Forested and  
Conservation Lands

■ Commercial

■ Recreation and  
Entertainment

■ Industrial

■ Community Services

■ Mixed-Use

■ Single Family

■ Multi-Family

■ Large Lot Residential

■ Public Services and  
Utilities

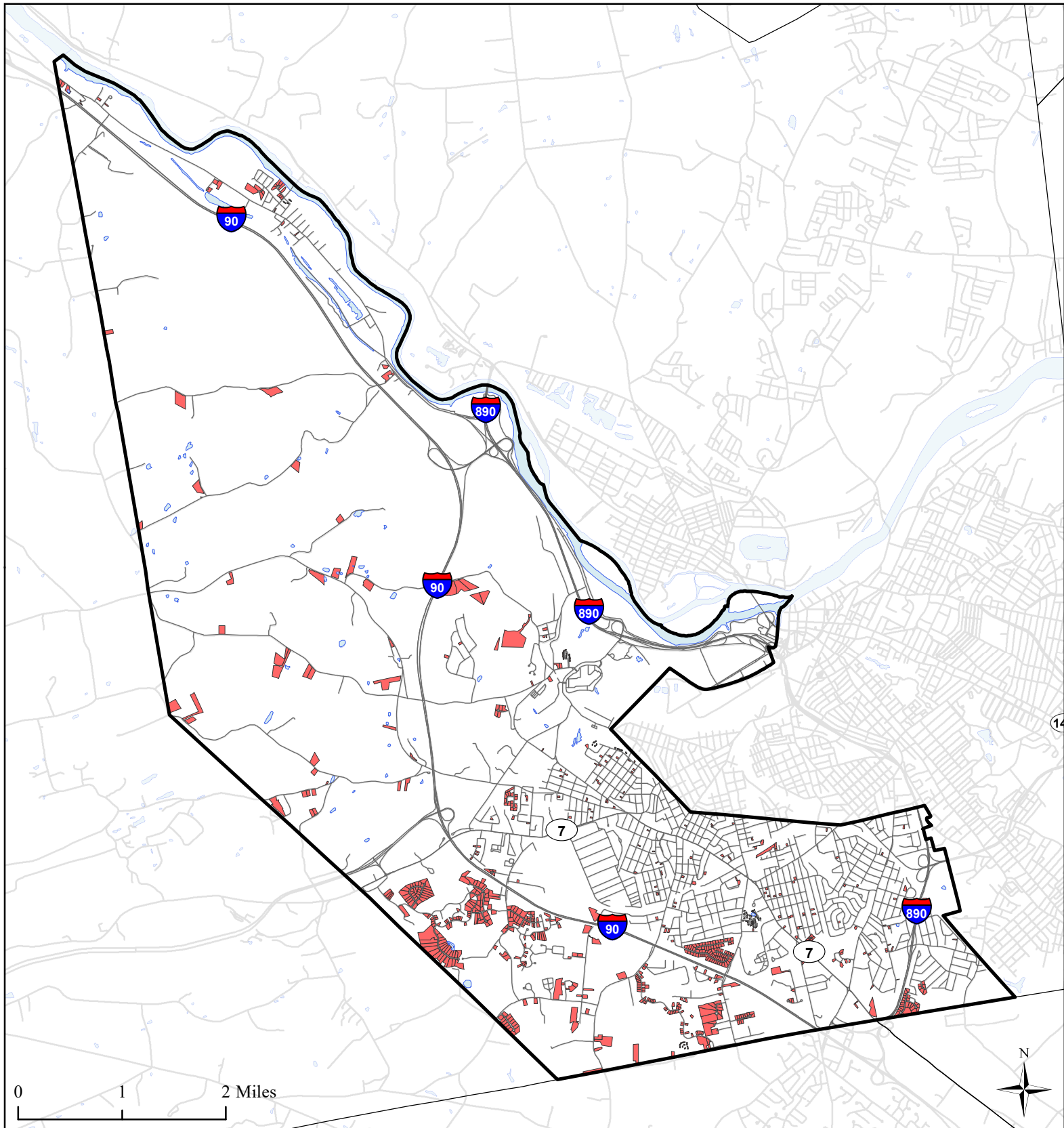
■ Vacant Land

  Town of Rotterdam

  Municipal Boundaries

■ Water Body

— Roads



# **Town of Rotterdam, NY** **Single Family Homes Built** **1995-2015**



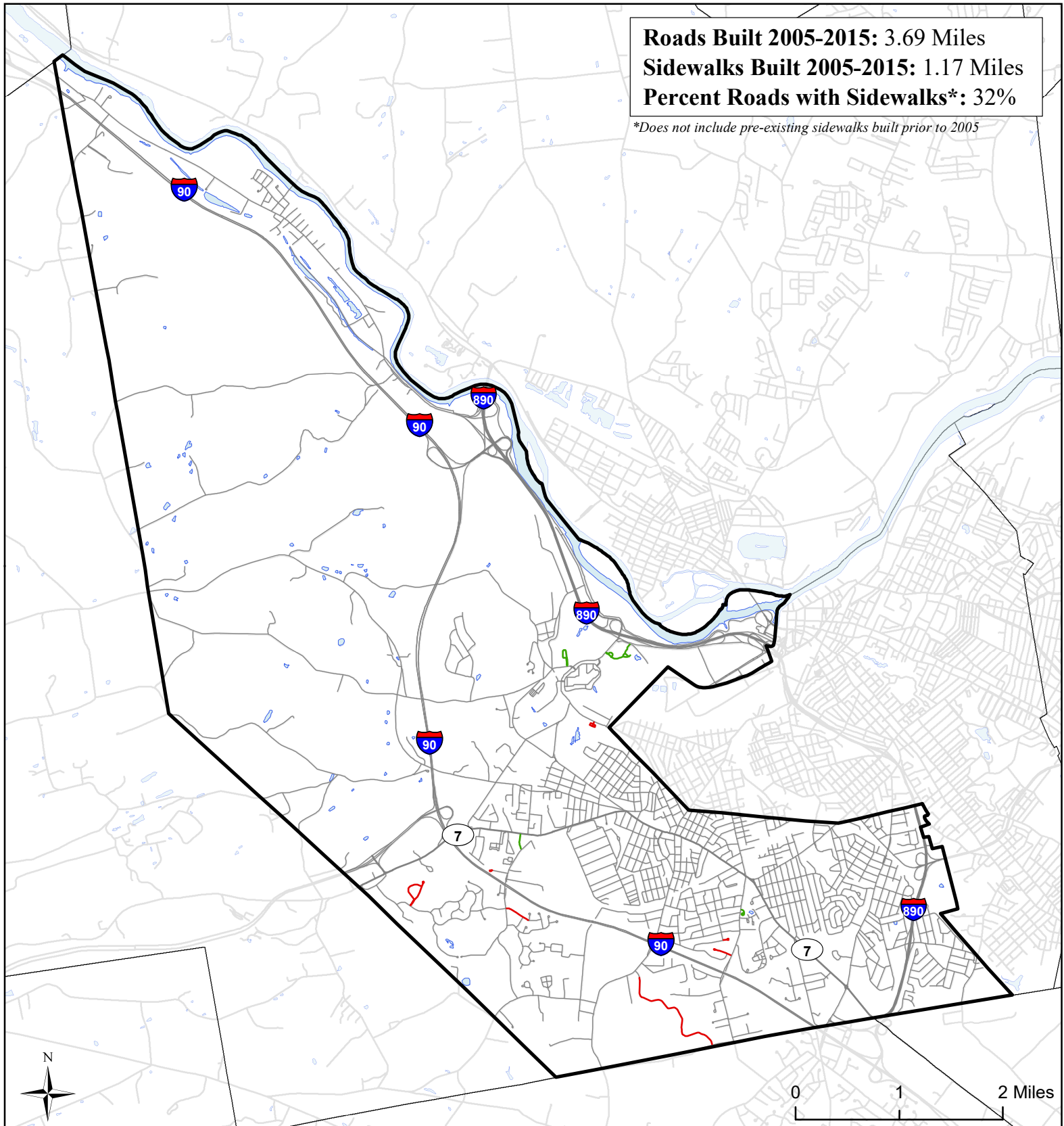
- Single Family Homes Built 1995-2015
- Town of Rotterdam
- Municipal Boundaries
- Water Bodies
- Roads

Source: Schenectady Department of Economic Development and Planning;  
 NYS GIS Program Office, 2016



**Roads Built 2005-2015: 3.69 Miles**  
**Sidewalks Built 2005-2015: 1.17 Miles**  
**Percent Roads with Sidewalks\*: 32%**

*\*Does not include pre-existing sidewalks built prior to 2005*



## Town of Rotterdam, NY Roads Built 2005-2015



**Roads Built  
2005-2015**

— Sidewalk  
— No Sidewalk

□ Town of Rotterdam  
□ Municipal  
Boundaries  
□ Water Bodies  
— Roads Built Prior  
to 2005

Source: NYS GIS Clearinghouse, GIS Program Office