



Community Growth Profile

Rensselaer County, NY



The following Community Growth Profile provides information regarding development patterns in Rensselaer County, NY. This report includes a current land use map, a map showing single family homes built in the last 20 years and new roads built over the last ten years. Also included are population and population projections, housing units, and greenhouse gas emissions data.

Population/Projections

1980	1990	2000	2010	2020	2030	2040	2050
151,966	154,429	125,538	159,429	161,744	163,685	164,643	164,943

Source: U.S. Census 1980, 1990, 2000, 2010 ; CDRPC Projections

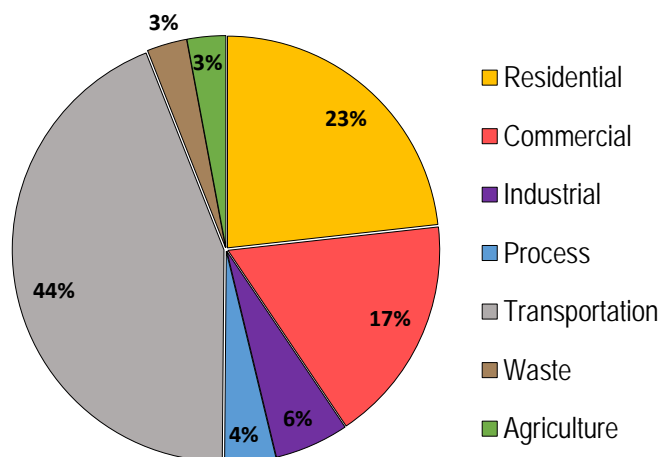
Housing Units 1980-2015

	1980	1990	2000	2010	2015
Total Housing Units	57,363	62,591	66,120	71,475	72,401

Source: U.S. Census 1980, 1990, 2000, 2010; U.S. Census Building Permit Survey 2011-15



Greenhouse Gas Emissions by Sector



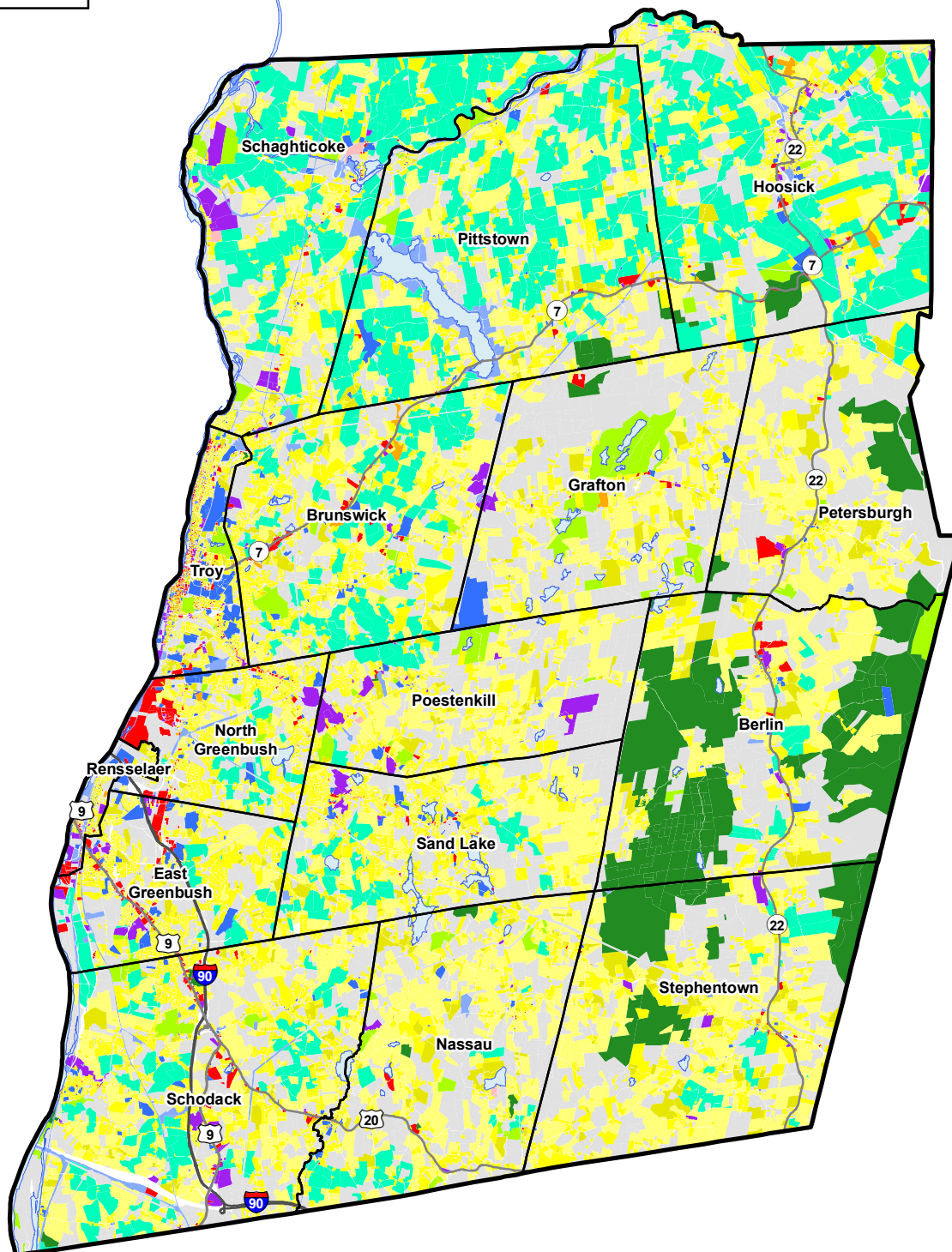
Per capita emissions (MTCO₂e*)

Rensselaer County	11
Capital District	15

Source: Capital District 2010 Regional GHG Inventory

*Metric Tons Carbon Dioxide Equivalent

0 3.5 7 Miles



Rensselaer County, NY Land Use



Land Use

■ Agricultural

■ Outdoor Recreation

■ Wild, Forested and Conservation Lands

■ Commercial

■ Recreation and Entertainment

■ Industrial

■ Community Services

■ Mixed-Use

■ Single Family

■ Multi-Family

■ Large Lot Residential

■ Public Services and Utilities

■ Vacant Land

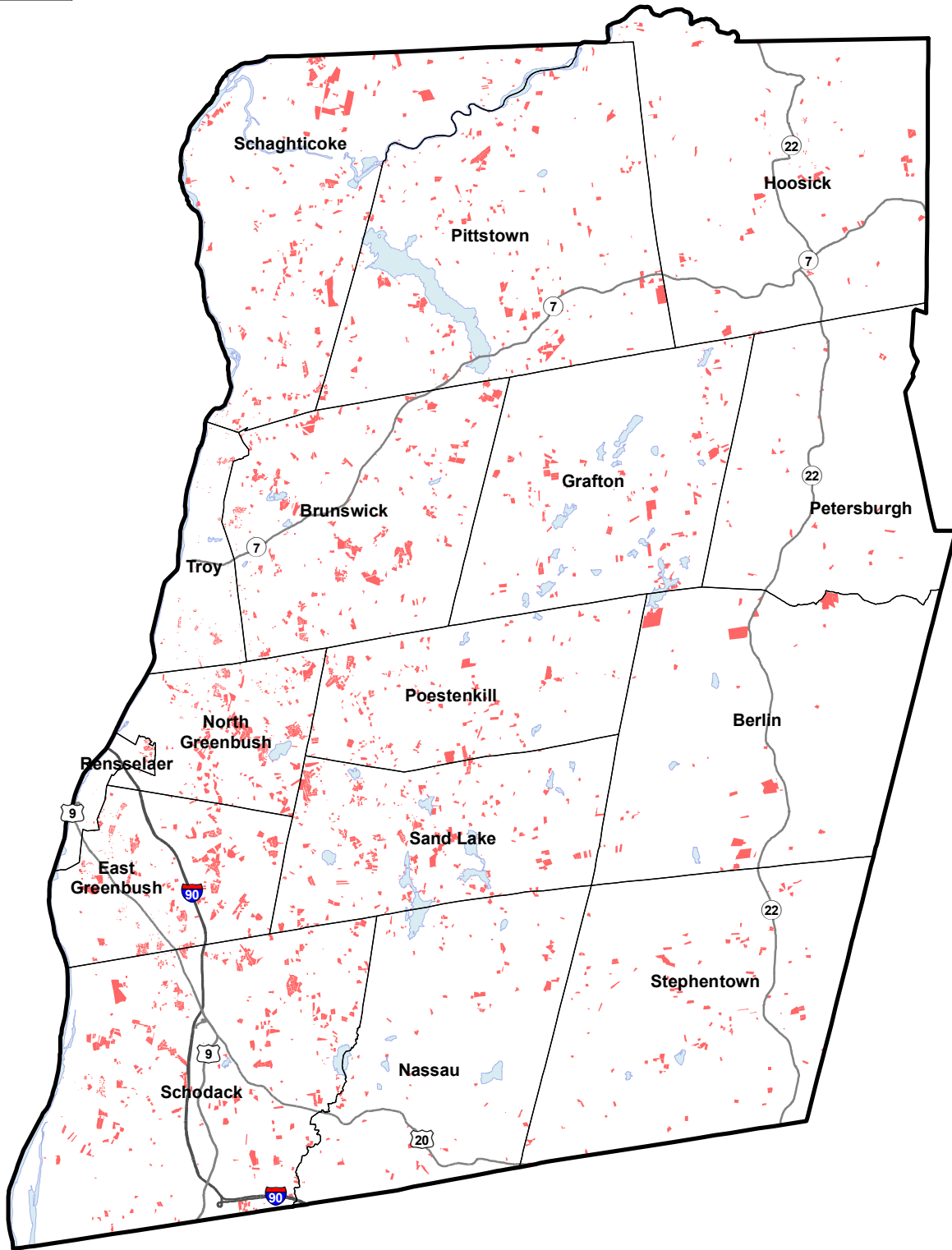
Municipal Boundaries

■ Water Bodies

— Interstates

— U.S. Routes



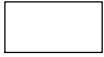

0 3 6 Miles



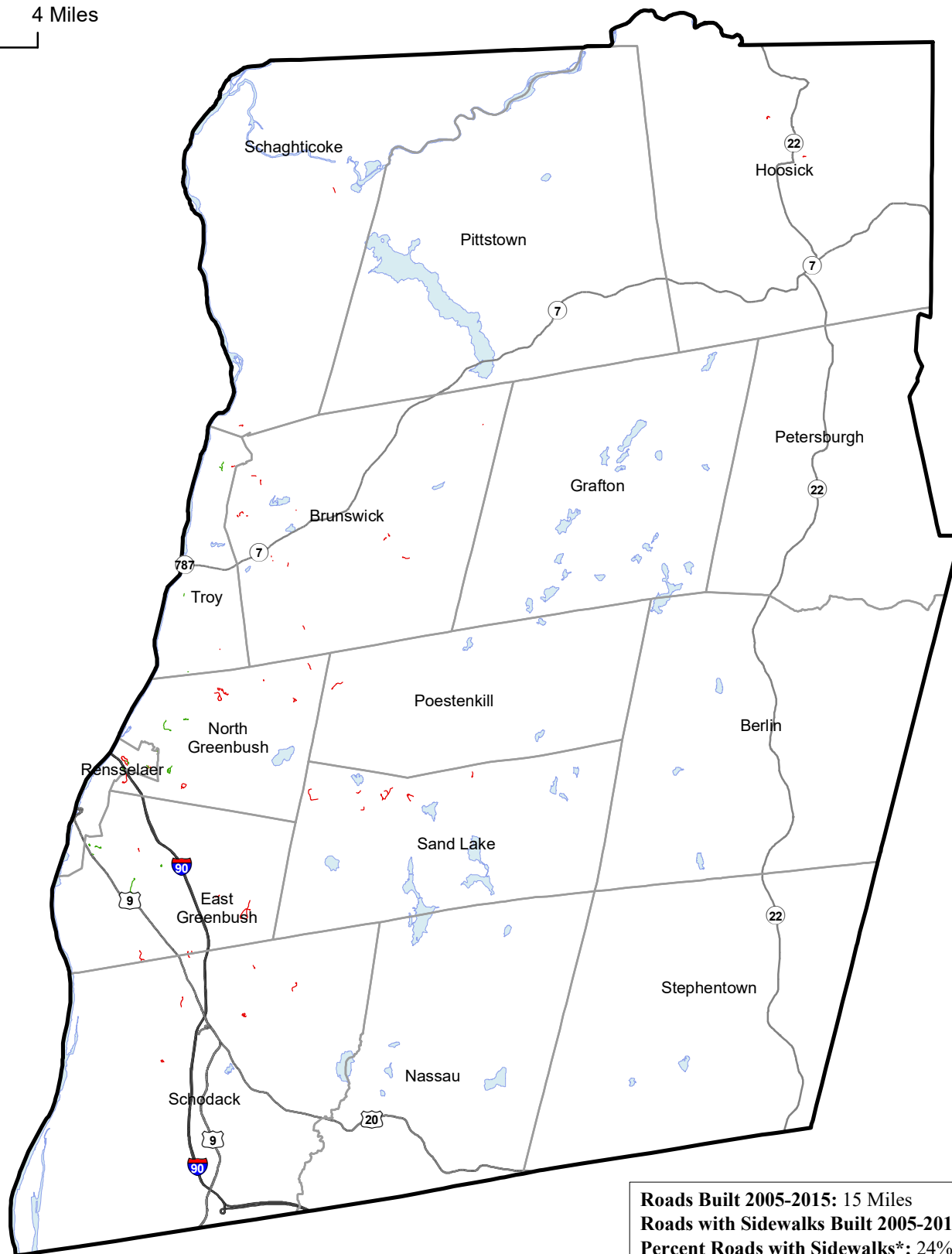
Rensselaer County, NY

Single Family Homes Built 1995-2015



-  Single Family Homes Built 1995-2015
-  Rensselaer County
-  Municipal Boundaries
-  Water Bodies

0 2 4 Miles







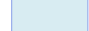
Roads Built 2005-2015: 15 Miles
Roads with Sidewalks Built 2005-2015: 3.7 Miles
Percent Roads with Sidewalks*: 24%

Rensselaer County, NY

Roads Built 2005-2015



Roads Built 2005-2015

-  Sidewalk
-  No Sidewalk
-  Rensselaer County
-  Municipal Boundaries
-  Water Bodies

Source: NYS GIS Clearinghouse, GIS Program Office