



Community Growth Profile

Town of Duanesburg, NY



The following Community Growth Profile provides information regarding development patterns in the Town of Duanesburg, Schenectady County, NY. This report includes a current land use map, a map showing single family homes built in the last 20 years and new roads built over the last ten years. Also included are population and population projections, housing units, and greenhouse gas emissions data.

Population/Projections

1980	1990	2000	2010	2020	2030	2040	2050
4,729	5,474	5,808	6,122	6,451	6,714	6,863	6,872

Source: U.S. Census 1980, 1990, 2000, 2010 ; CDRPC Projections

Housing Units 1980-2015

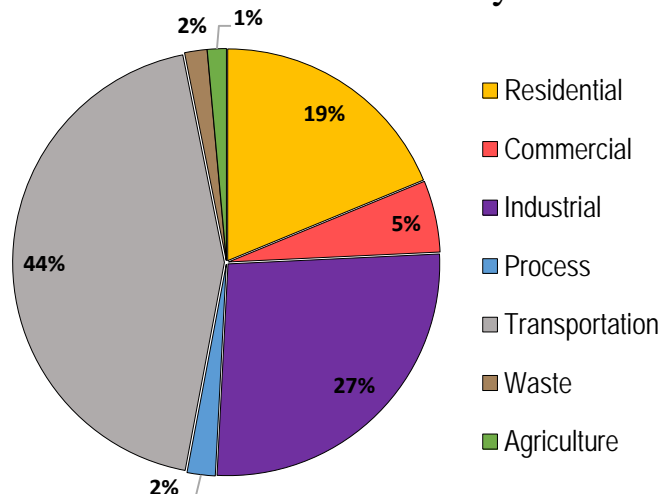
	1980	1990	2000	2010	2015
Total Housing Units	1,768	2,059	2,307	2,533	2,840

Source: U.S. Census 1980, 1990, 2000, 2010; U.S. Census Building Permit Survey 2011-15

Capital Region, New York



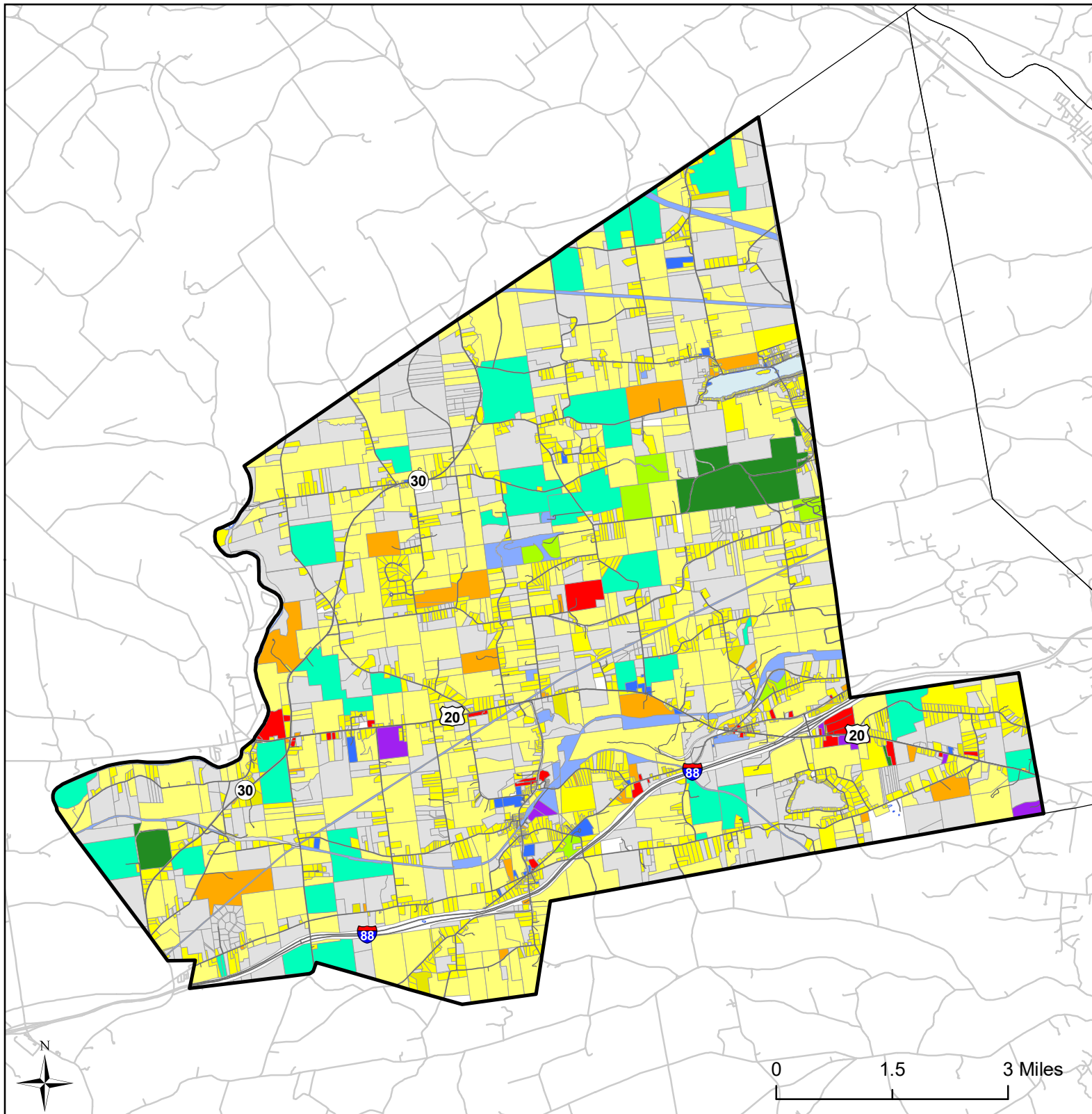
Greenhouse Gas Emissions by Sector



Per capita emissions (MTCO₂e*)

Town of Duanesburg	18
Schenectady County	10
Capital District	15

Source: Capital District 2010 Regional GHG Inventory
*Metric Tons Carbon Dioxide Equivalent



Town of Duanesburg, NY Land Use



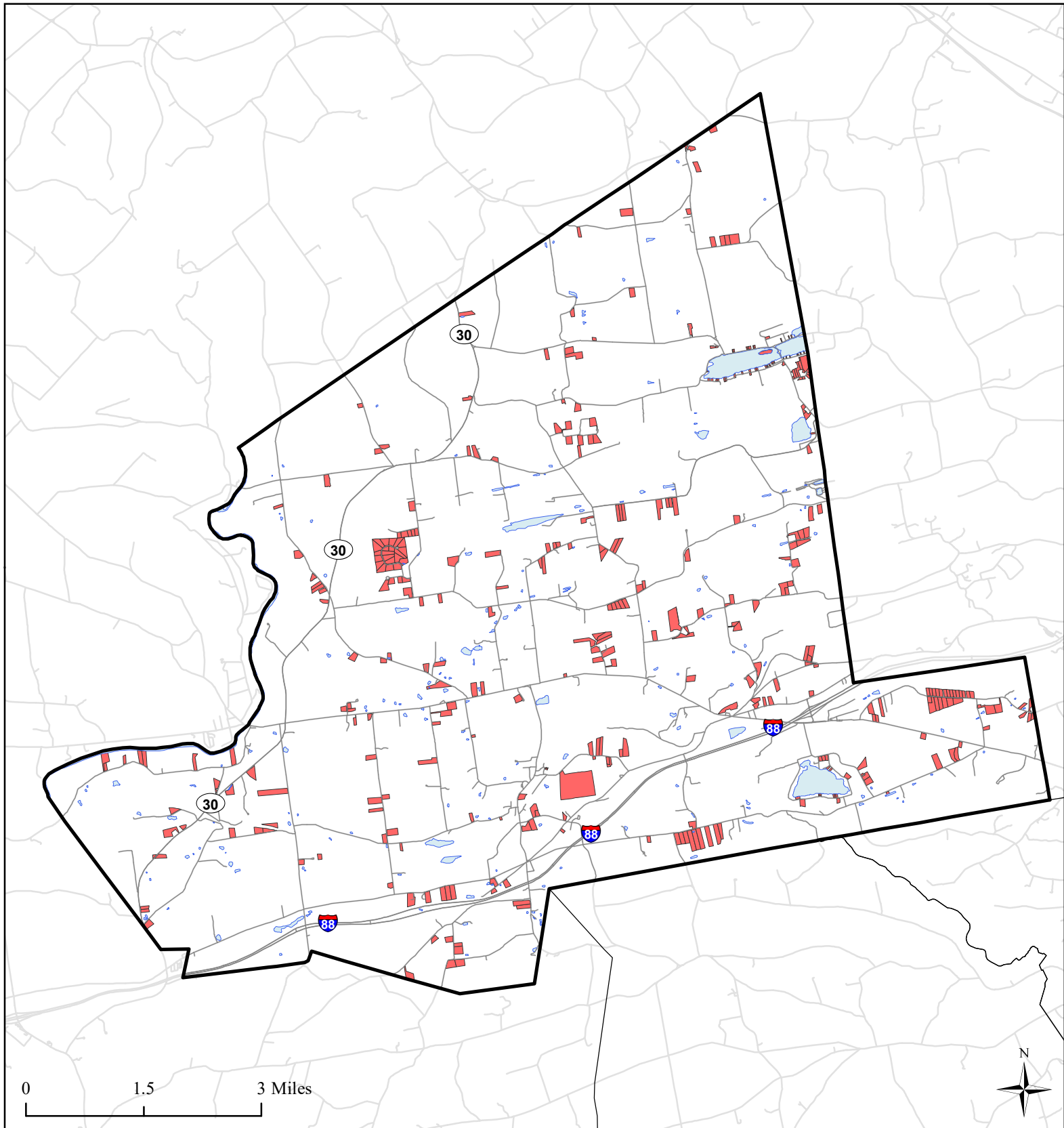
Source: Schenectady Department of Economic
Development and Planning;
NYS GIS Program Office, 2016

Land Use

- Agricultural
- Outdoor Recreation
- Wild, Forested and Conservation Lands
- Commercial
- Recreation and Entertainment
- Industrial

- Community Services
- Mixed-Use
- Single Family
- Multi-Family
- Large Lot Residential
- Public Services and Utilities
- Vacant Land

- Town of Duanesburg
- Municipal Boundaries
- Water Bodies
- Roads

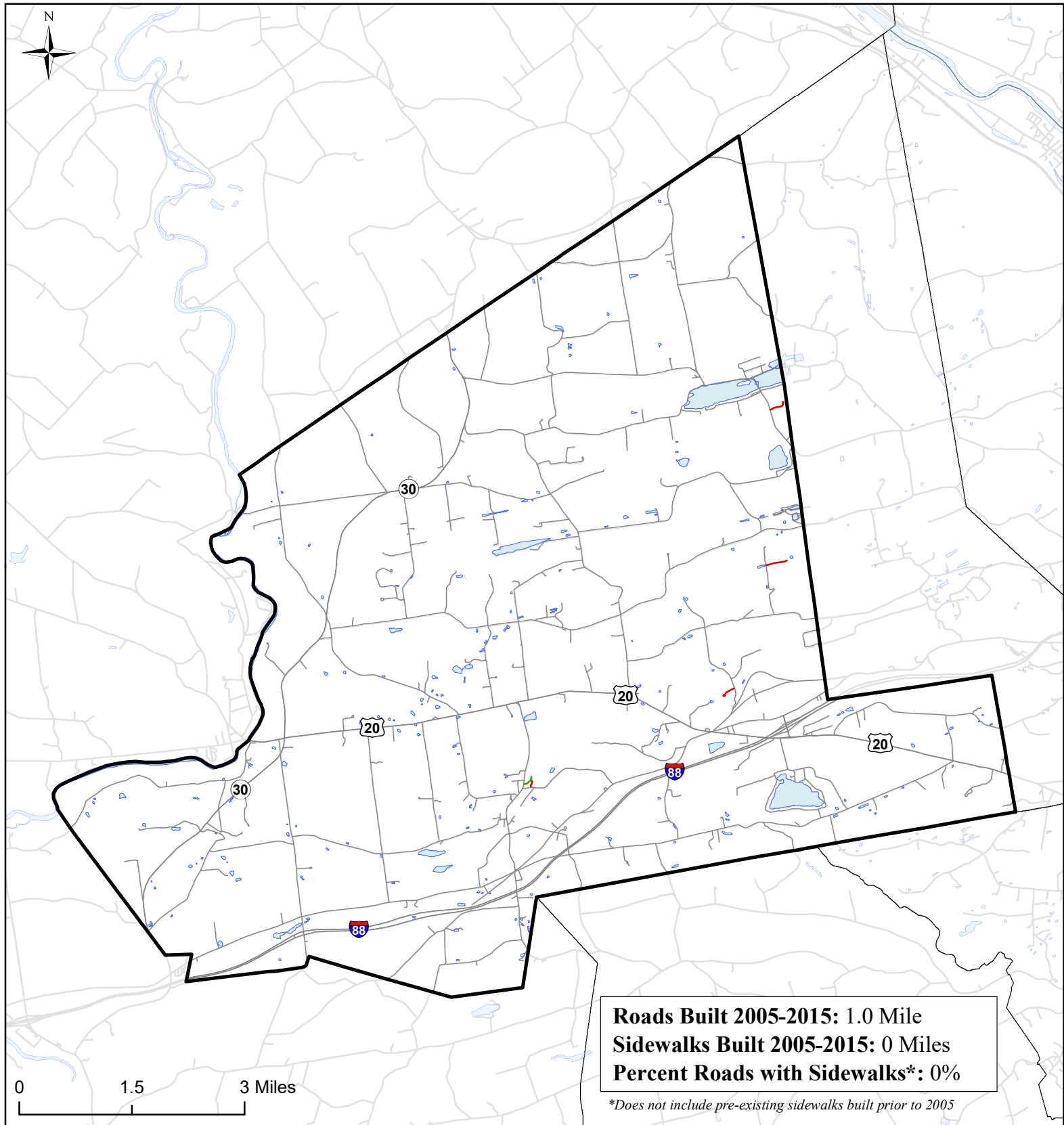


Town of Duanesburg, NY **Single Family Homes Built** **1995-2015**



- Single Family Homes Built 1995-2015
- Duanesburg Boundary
- Municipal Boundaries
- Water Bodies
- Roads

Source: Schenectady Department of Economic Development and Planning;
 NYS GIS Program Office, 2016



Town of Duanesburg, NY

Roads Built 2005-2015



Roads Built 2005-2015

— Sidewalk

— No Sidewalk

□ Town of
Duanesburg

□ Municipal
Boundaries

□ Water Bodies

— Roads Built Prior
to 2005