



# Community Growth Profile

## Town of Colonie, NY



The following Community Growth Profile provides information regarding development patterns in the Town of Colonie, Albany County, NY. This report includes a current land use map, a map showing single family homes built in the last 20 years and new roads built over the last ten years. Also included are population and population projections, housing units, and greenhouse gas emissions data.

### Population/Projections

1980	1990	2000	2010	2020	2030	2040	2050
74,593	76,497	79,258	81,591	83,438	85,678	86,549	86,363

Source: U.S. Census 1980, 1990, 2000, 2010 ; CDRPC Projections

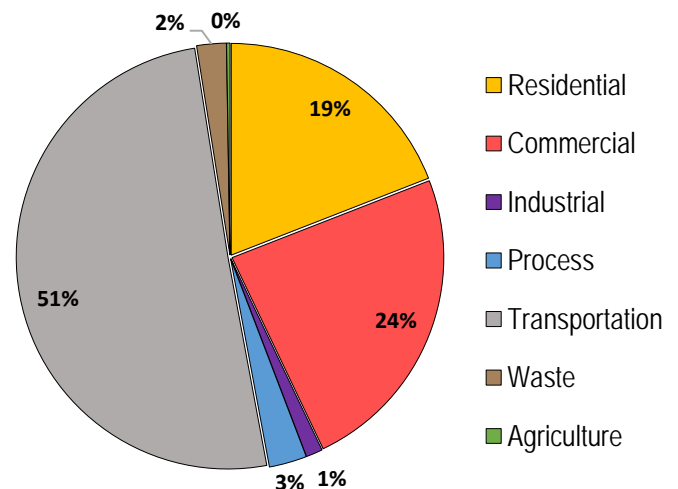
### Housing Units 1980-2015

	1980	1990	2000	2010	2015
Total Housing Units	26,707	29,634	32,280	34,620	35,592

Source: U.S. Census 1980, 1990, 2000, 2010; U.S. Census Building Permit Survey 2011-15



### Greenhouse Gas Emissions by Sector

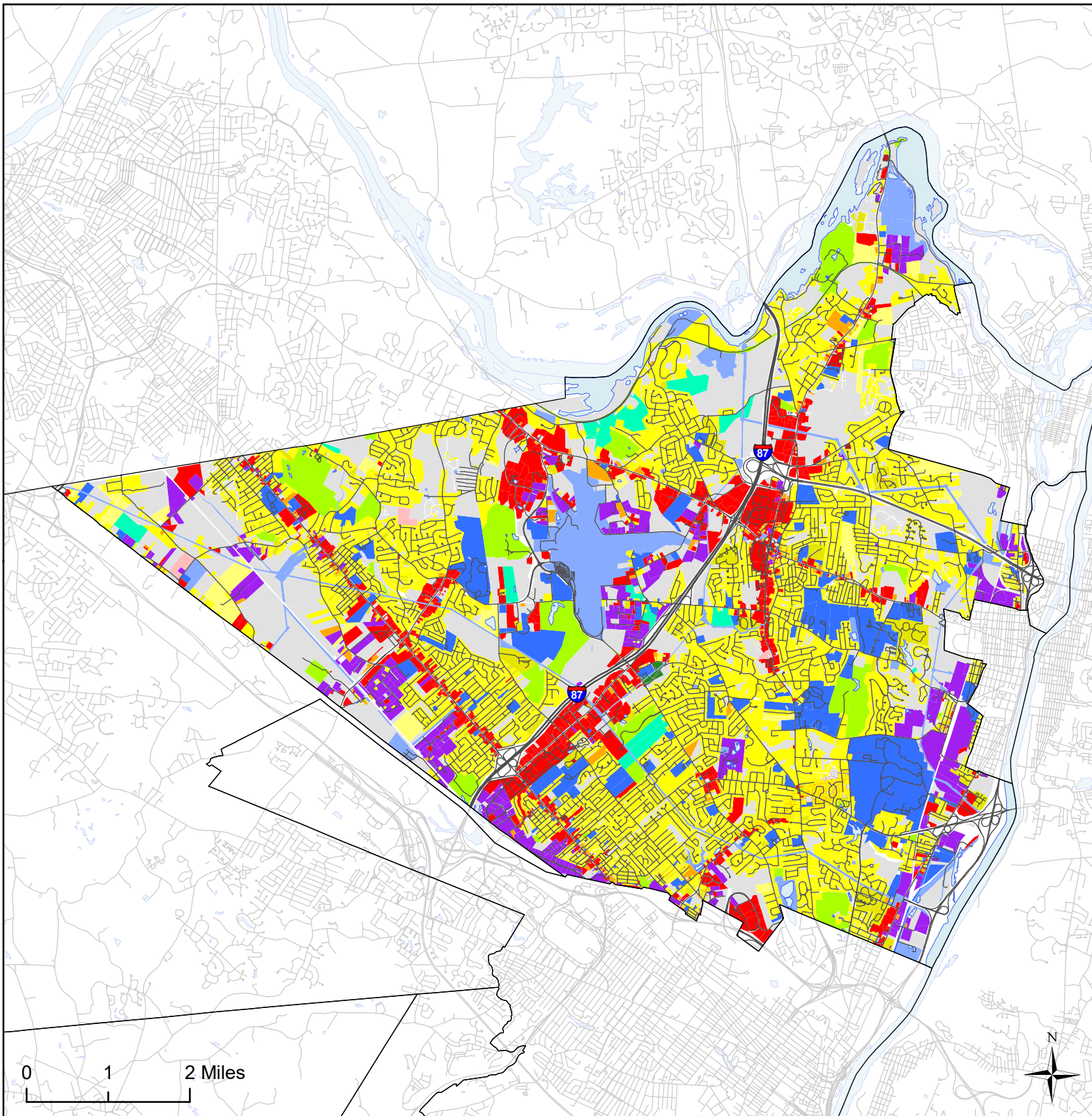


### Per capita emissions (MTCO<sub>2</sub>e\*)

Town of Colonie	14
Albany County	21
Capital District	15

Source: Capital District 2010 Regional GHG Inventory

\*Metric Tons Carbon Dioxide Equivalent



## Town of Colonie, NY Land Use



### Land Use

Agricultural

Outdoor Recreation

Wild, Forested and Conservation Lands

Commercial

Recreation and Entertainment

Industrial

Community Services

Mixed-Use

Single Family

Multi-Family

Large Lot Residential

Public Services and Utilities

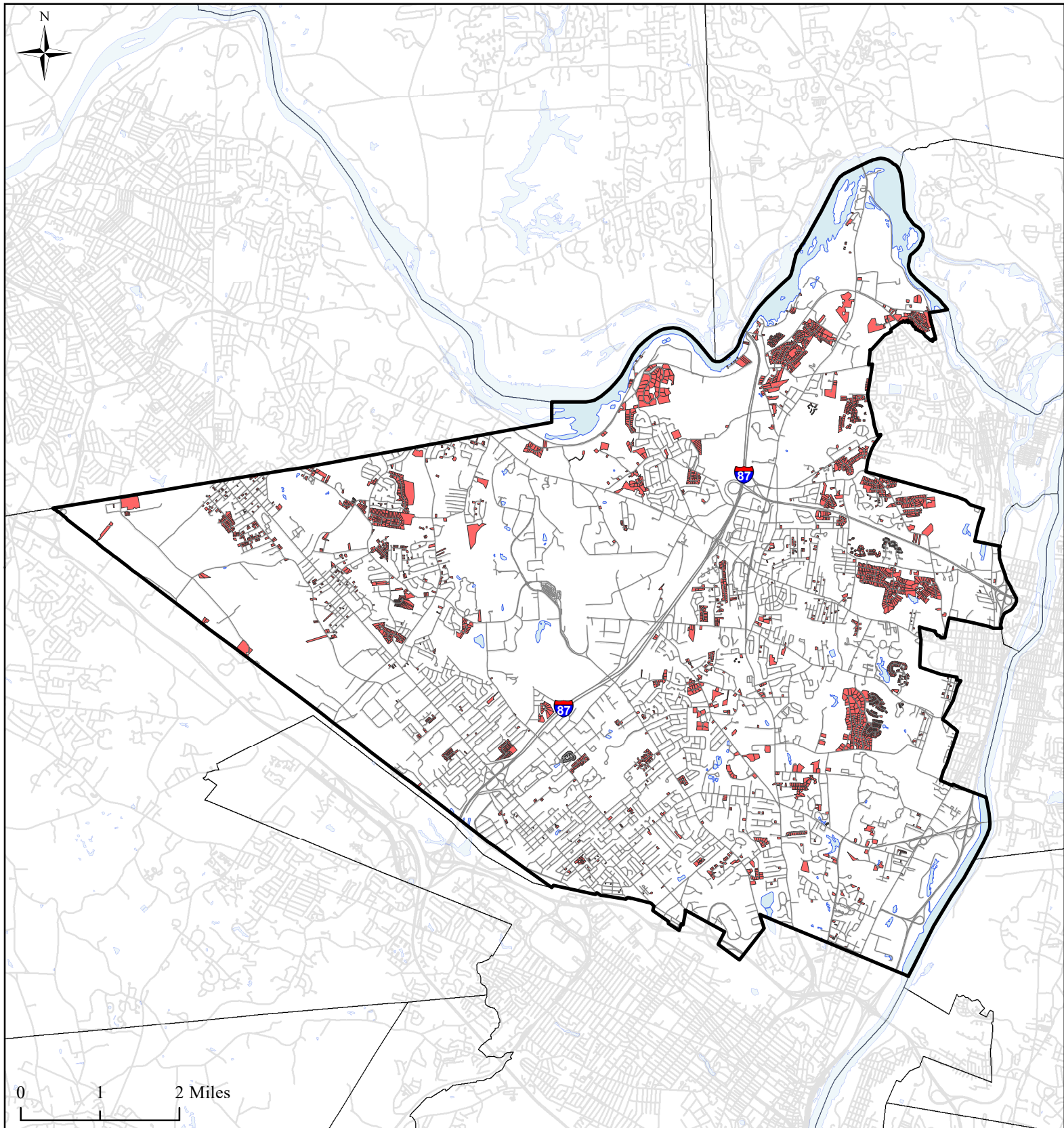
Vacant Land

Water Bodies

Municipal Boundaries

Roads



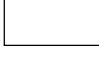
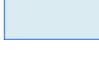





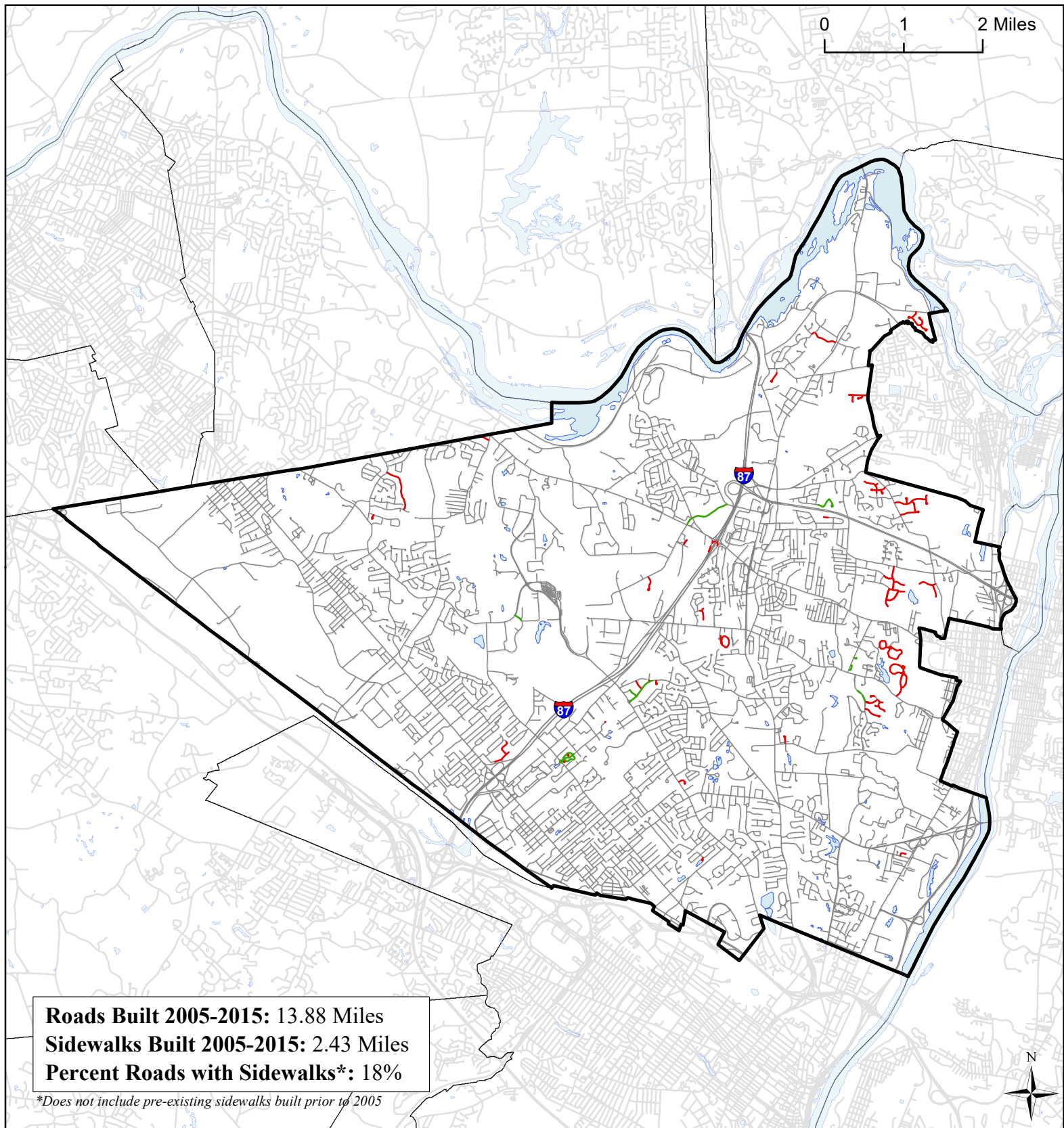
# Town of Colonie, NY

## Single Family Homes Built 1995-2015



-  Single Family Homes Built 1995-2015
-  Colonie Boundary
-  Municipal Boundaries
-  Water Bodies
-  Roads

Source: Albany County tax parcel data; NYS GIS Program Office 2016



# Town of Colonie, NY

## Roads Built 2005-2015



### Roads Built 2005-2015

- Sidewalk
- No Sidewalk

- Town of Colonie
- Municipal Boundaries
- Colonie\_Water
- Roads Built Prior to 2005