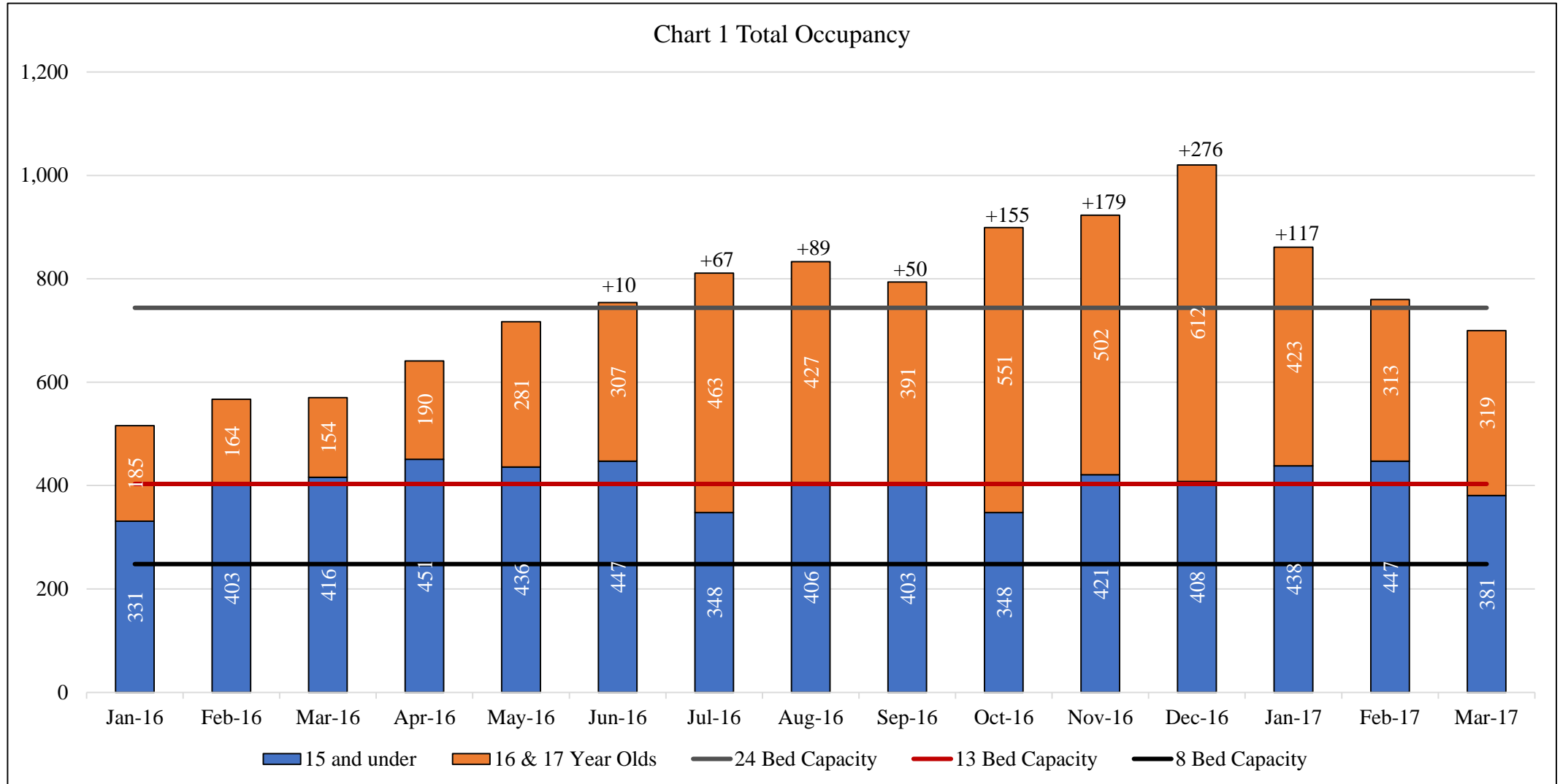


Population Analysis

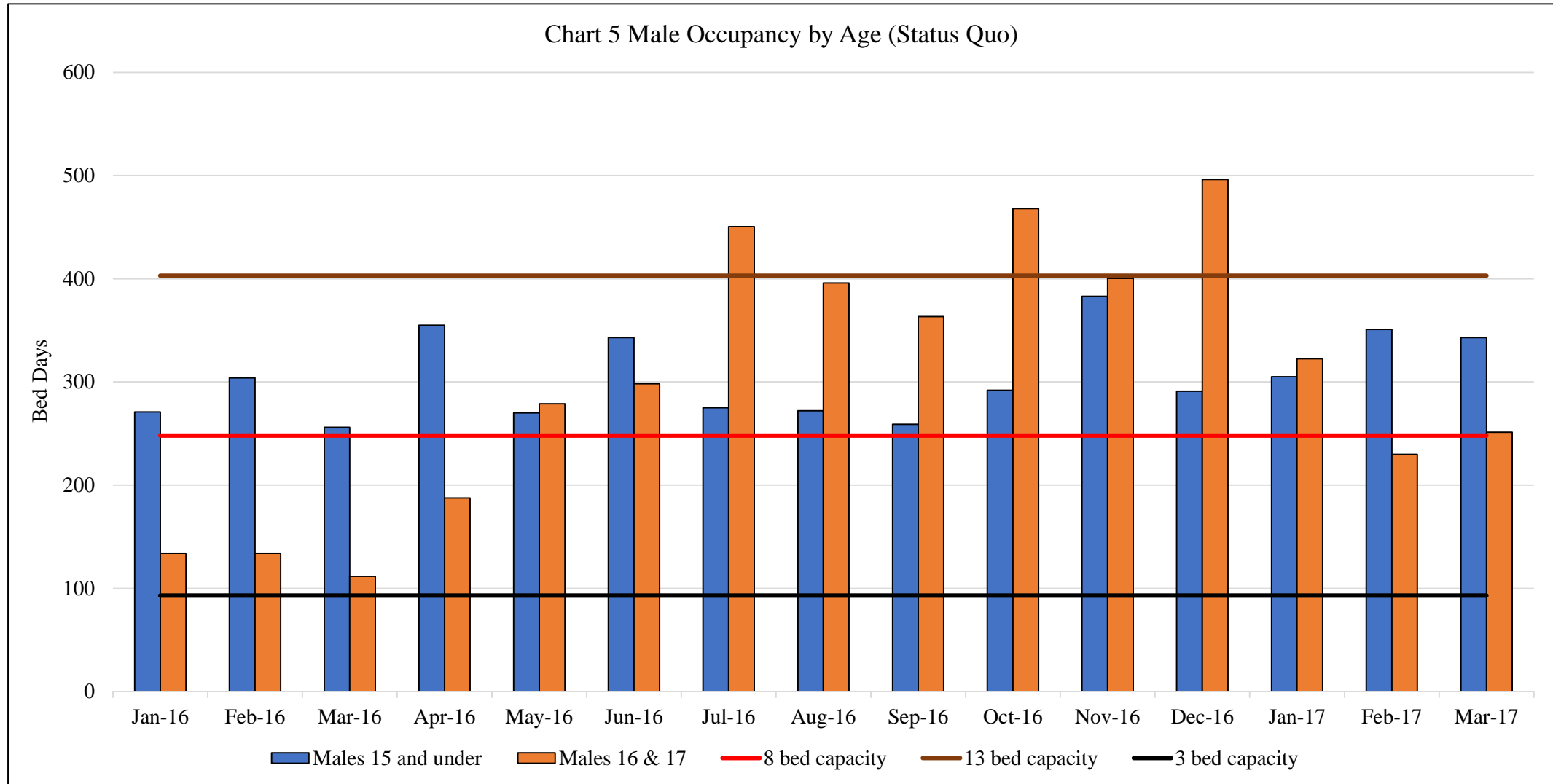


- OCFS Analysis provided projected ranges which were not very informative
- CDRPC examined occupancy measured as bed days over a 15-month period from January 2016 to March 2017. The data included actual utilization for JDs/JOs and estimated utilization based on the population of potential AOs in “owner-county” jails over the same period.
- Age, gender, and place of origin, and were contrasted against maximum capacity based on the existing 8, 13 bed wings, and additional 3 beds typically used for females for a total capacity of 24 beds
- Based on a 31 day month, total capacity of the 24-bed facility is 744 bed days per month

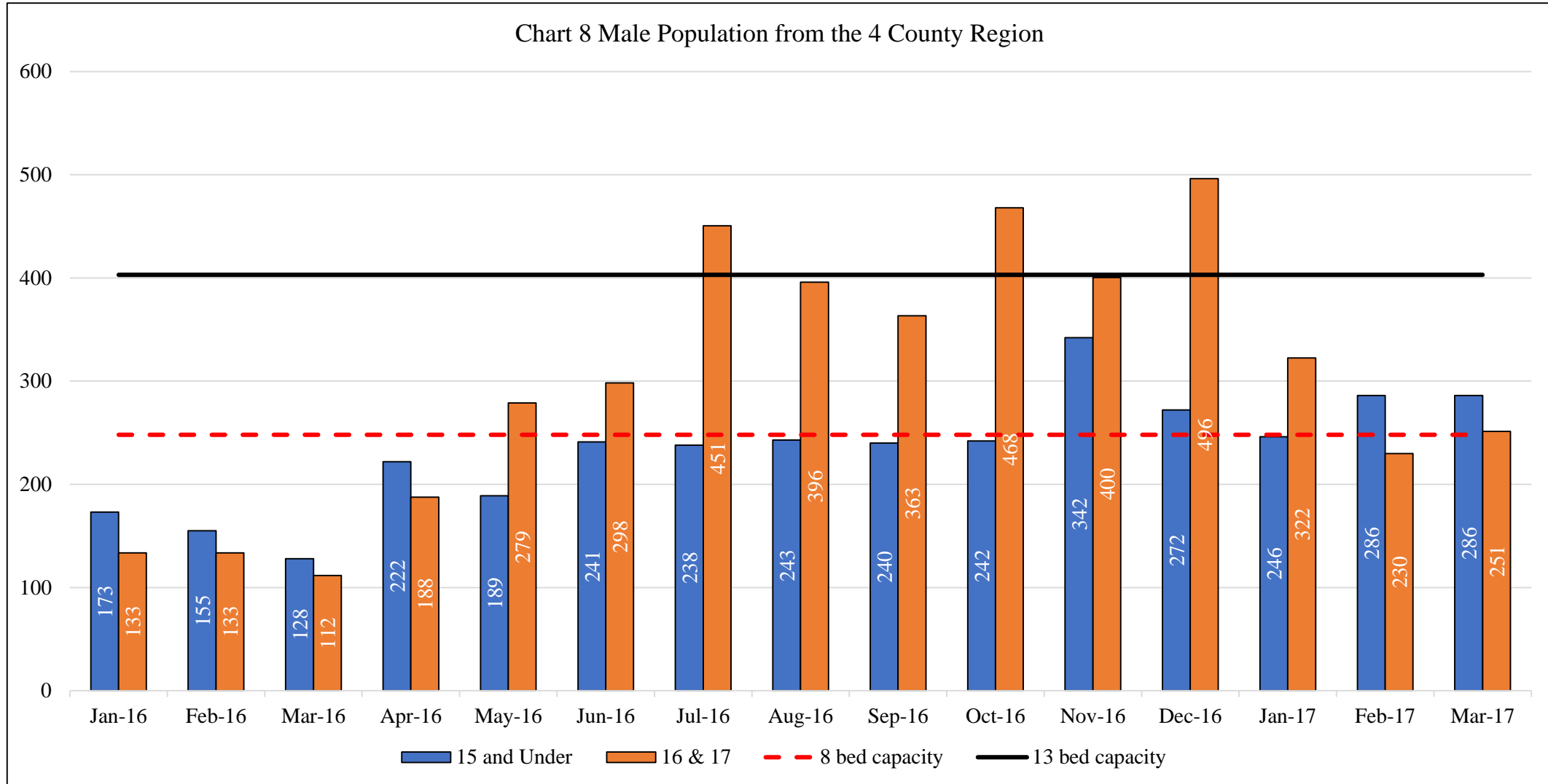
Total Bed Days Per Month (Status Quo)



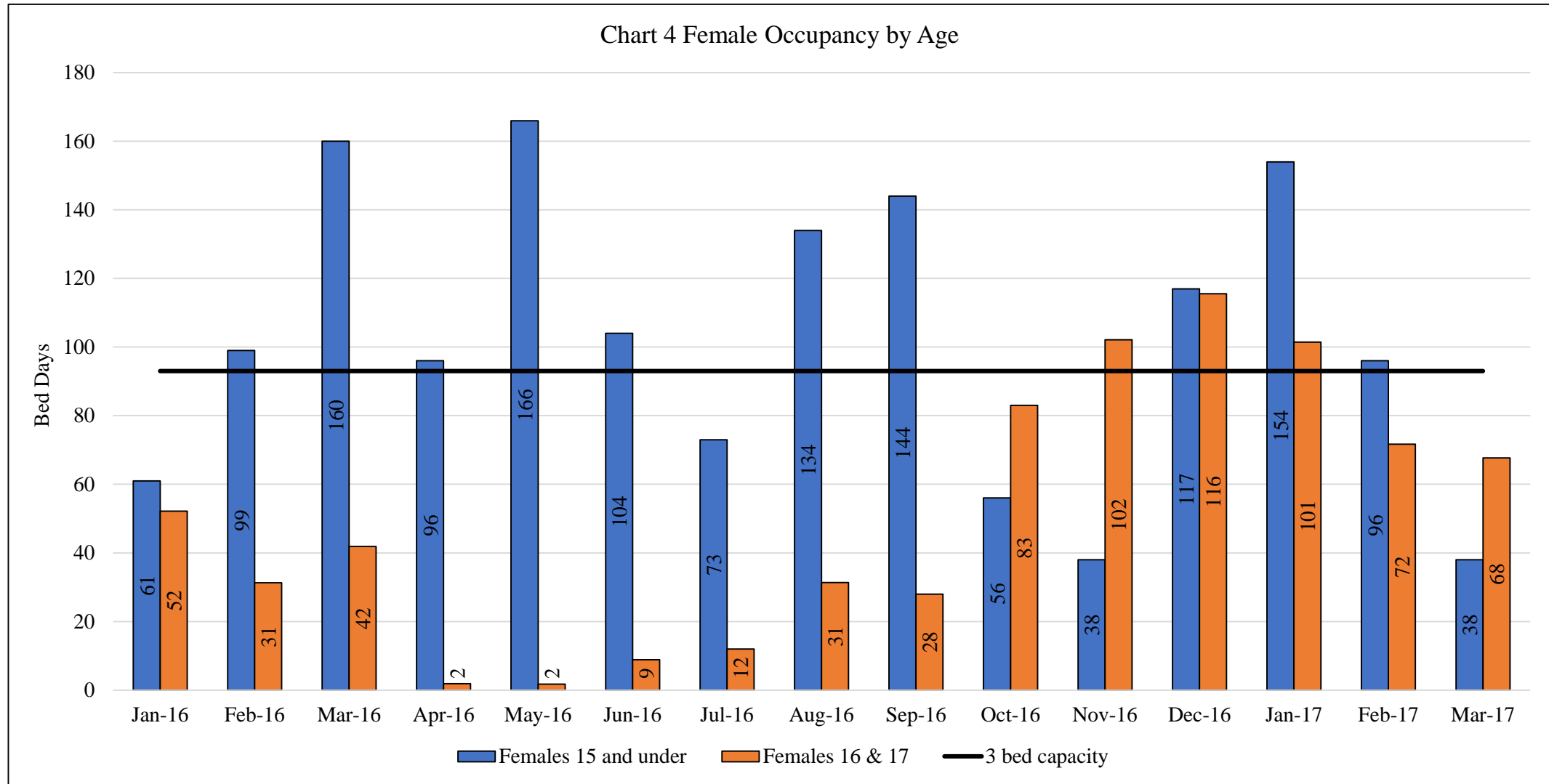
Male Bed Days by Age (Status Quo)



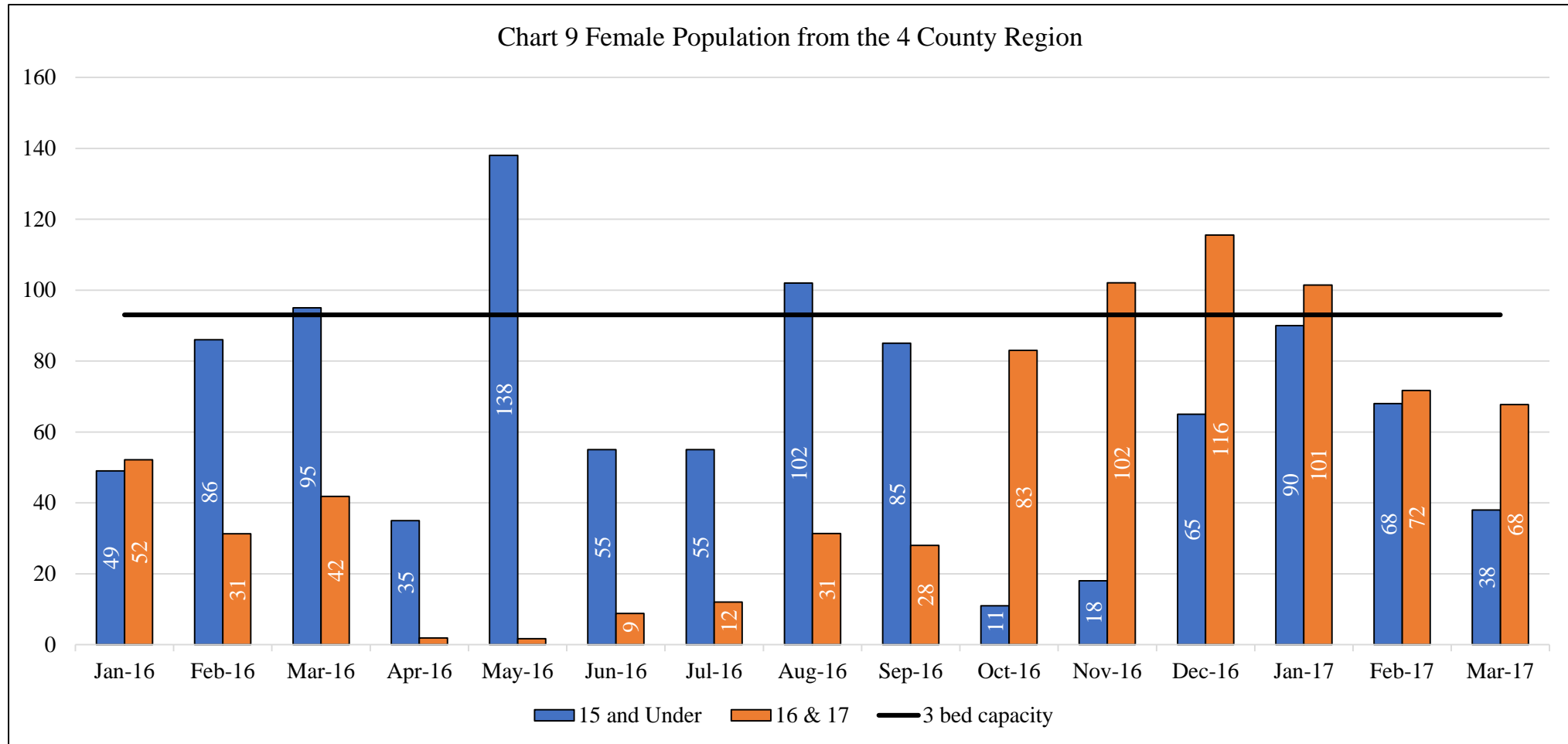
Male Bed Days by Age from 4 County Region



Female Bed Days by Age (Status Quo)

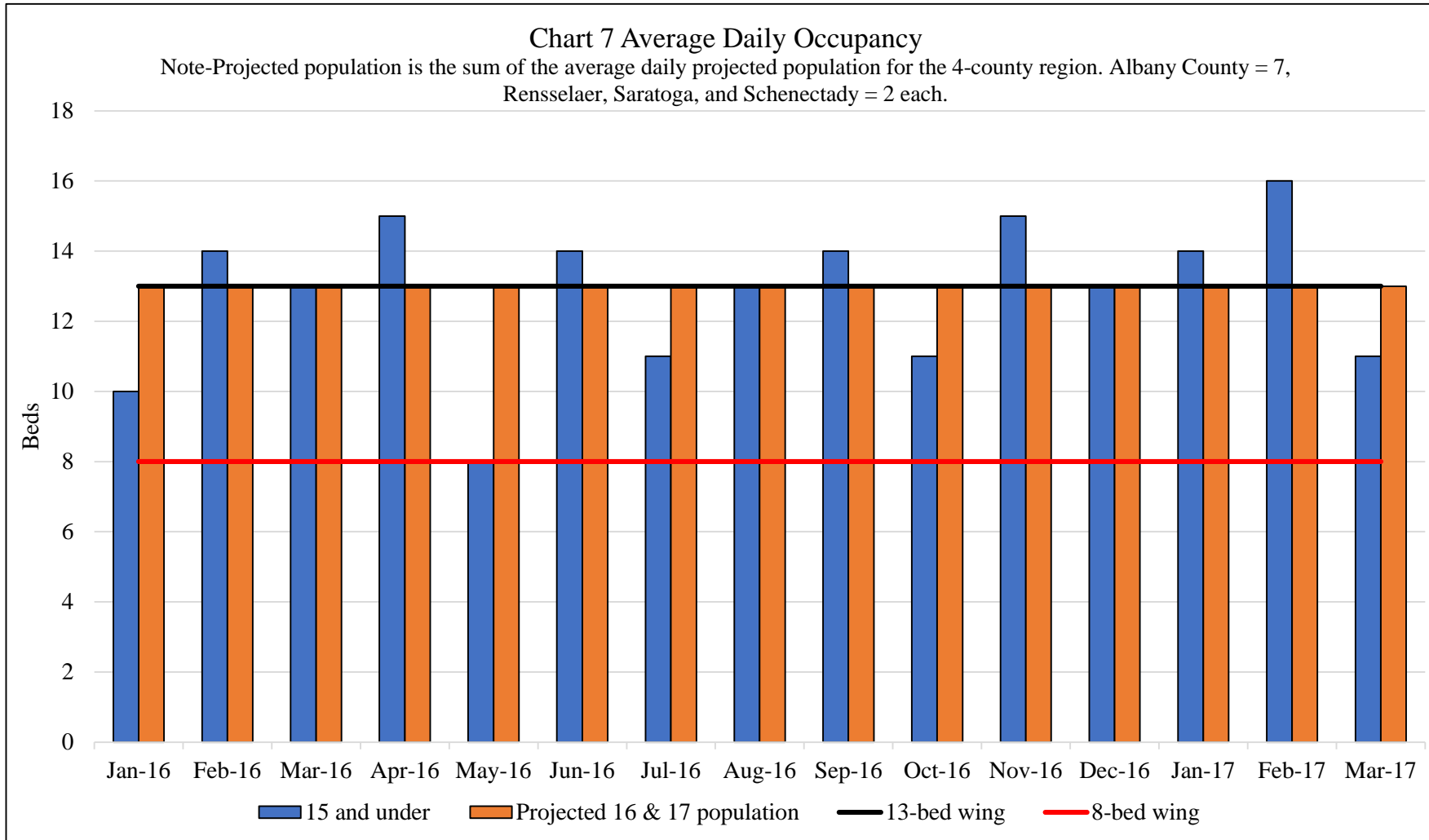


Female Bed Days by Age from 4 Counties



Total occupancy for all those 15 and younger in the JDC, and all those 16 and 17 years of age incarcerated locally, exceeded maximum capacity for both the 8 and 13 bed wings of the Juvenile Detention Center every month over the 15-month period. Furthermore, total occupancy exceeded the center's maximum bed days capacity for 24 beds in nine of the months.

Average Daily Population- OCFS Estimates



| County 16&17 yo | Projected daily range | Average |
|--------------------|-----------------------|-----------|
| Albany County | 5-10 | 7 |
| Rensselaer County | 0-5 | 2 |
| Saratoga County | 0-5 | 2 |
| Schenectady County | 0-5 | 2 |
| Total | 5-25 | 13 |

Total Projected AO Demand

| AO Female Bed Days | | | | | | | | | | |
|--------------------|--------------------|--------------|-----------------|-------------------------|--------------|----------------------|-------------------------|------------|----------------------|-------------------------|
| 4 County Region | Outside the Region | Annual Total | Avg Monthly Use | Avg daily beds required | Hyper Demand | Avg Monthly Bed Days | Avg daily beds required | Low Demand | Avg Monthly Bed Days | Avg daily beds required |
| 751 | 957 | 1708 | 142 | 5 | 1879 | 157 | 5 | 1196 | 100 | 3 |

| AO Male Bed Days (annual bed days) | | | | | | | | | | |
|------------------------------------|-------------------------|--------------|-----------------|-------------------------|--------------|----------------------|-------------------------|------------|----------------------|-------------------------|
| 4 County Region | Select outside counties | Annual Total | Avg Monthly Use | Avg daily beds required | Hyper Demand | Avg Monthly Bed Days | Avg daily beds required | Low Demand | Avg Monthly Bed Days | Avg daily beds required |
| 4,522 | 3,209 | 7,731 | 64 | 21 | 8,504 | 709 | 23 | 6,958 | 580 | 19 |

Considerations:

- What are other facilities planning?
- How many other counties or will construct new facilities?
- How will increased emphasis on diversion impact secure detention stays?
- Will potentially longer stays of sentenced youth significantly impact available beds?